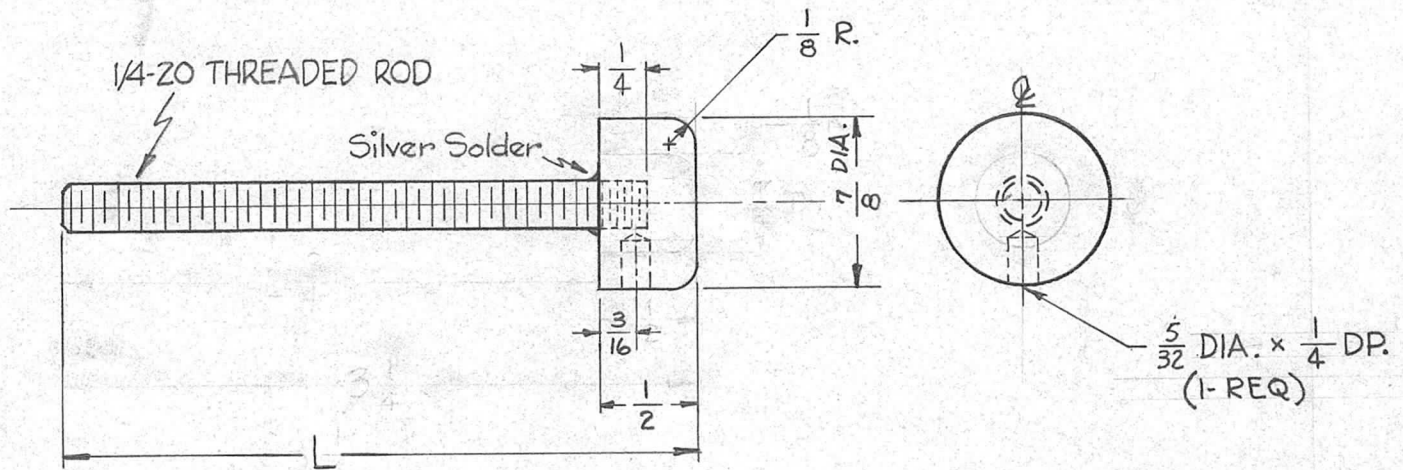


TMC PART NO.	Dim. "L"
PM618	3 1/4
PM618-2	3 1/2

REQ. PER UNIT	USED ON		
	MODEL	ASS'Y. NO.	DATE
8	GPT-40K	AP-105	5-23-60
3	GPT-40K	AX-212	5-23-60

PM 618 C



ISSUE	ITEM	CHANGED FROM	DATE	CH. NO.	DRAFTS	CHECKER	ENG. APP.	REQ. ITEM	PART NO.	DESCRIPTION	SYMBOL	
C		ADD. P/N CHART	3-21-66	15981	HLA	<i>[Signature]</i>	<i>[Signature]</i>	7/8 DIA. ROD		THE TECHNICAL MATERIEL CORP. MAMARONECK, NEW YORK CONTACT BUTTON	C	
B	1	5/32 DIA x 1/4 DP. HOLE ADDED	9-12-62	7201	G.S.	<i>[Signature]</i>	<i>[Signature]</i>	STOCK SIZE				
A	1	7/8 D. ROD WAS 1/2	5-23-60	2316	<i>[Signature]</i>	<i>[Signature]</i>	<i>[Signature]</i>	BRASS				
TOLERANCES								MATERIAL				
DEC. DIM. ±			SCALE:					Half Hard			<i>[Signature]</i>	<i>[Signature]</i>
FRAC. DIM. ±			MAXIMUM ALLOWABLE TOLERANCES HAVE BEEN DETERMINED AND ANY DEVIATIONS WILL BE CAUSE FOR REJECTION. REMOVE ALL BURRS AND SHARP EDGES					TYPE & TEMPER	HEATTREAT. SPEC.	DRAWN	CHECKED	FINAL APPROVAL
ANGULAR DIM. ±								Nickel Plate			<i>[Signature]</i>	<i>[Signature]</i>
								FINISH & SPEC. NO.	ELEC. DES. APP	MECH. DES. APP		