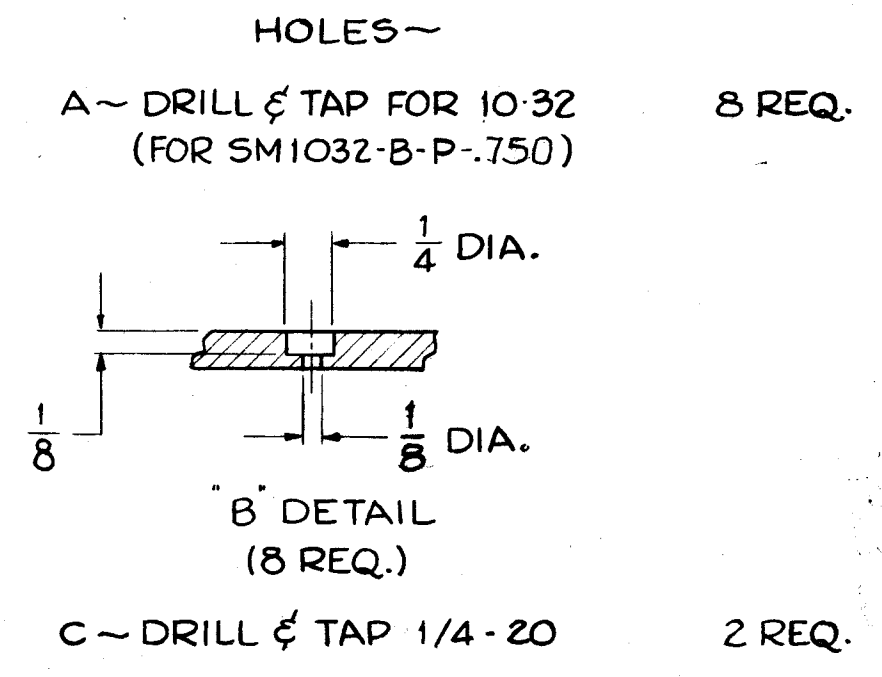
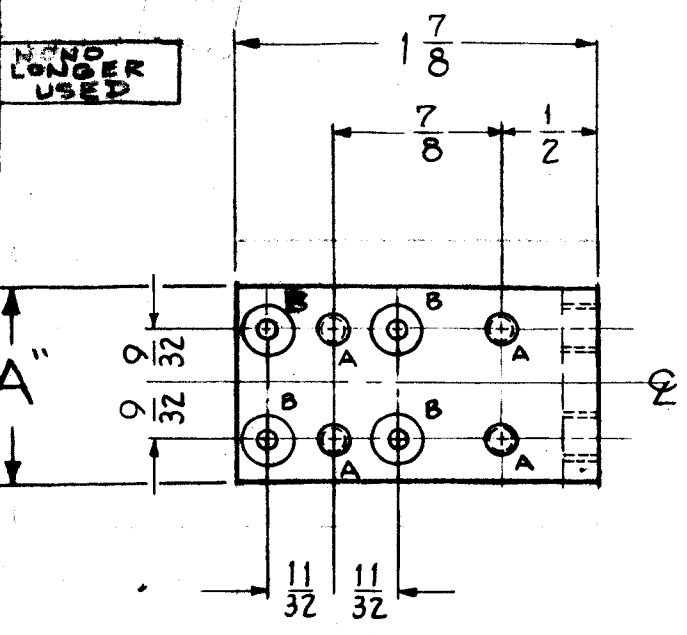


PM-598

PART NO	"A" DIM	MODEL	
		SECTION	REQ
PM-598-1	1 1/2	AX-244	1
PM-598-2	1	AX-244	10

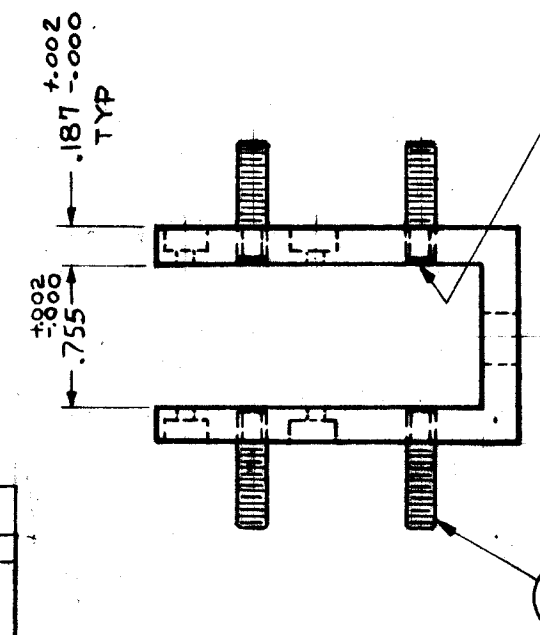


NOTICE TO PERSONS RECEIVING THIS DRAWING

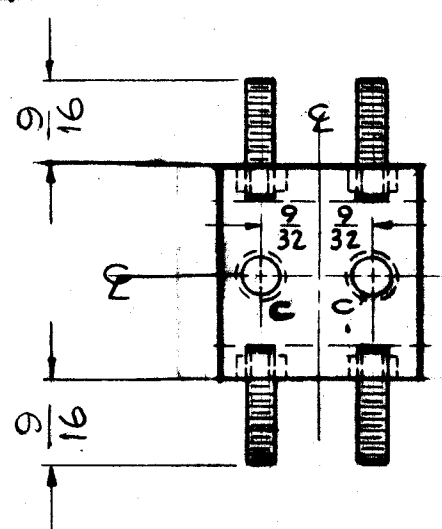
THE TECHNICAL MATERIEL CORPORATION claims proprietary right in the material disclosed hereon. This drawing is issued in confidence for engineering information only and may not be reproduced or used to manufacture anything shown hereon without permission from THE TECHNICAL MATERIEL CORPORATION to the user. This drawing is loaned for mutual assistance and is subject to recall at any time.

Property of:

THE TECHNICAL MATERIEL CORPORATION
MAMARONECK, NEW YORK



SILVER SOLDER AS SHOWN.



ISSUE	ITEM	CHANGED FROM	DATE	CH. NO.	DRAFTS	CHECKER	ENG. APP.
F	1	ITEM (1) WAS SM1032BP.750	2-7-63	8137			
E	1	.187 ±.002 DIM WAS 3/16	8-14-62	7069	G.S.		
D	6	ON PM-598-2, CHG'D. REQ. FROM 7 to 10	7-25-61	53	R.		
	5	ON PM-598-1, ADDED "NO LONGER USED."					
	4	ON DETAIL "B", 1/8 DIA. WAS 3/32 DIA.					
	3	ITEM (1) WAS SM1032BP.362					
	2	STUD DIM 9/16 WAS 1/2					
C	1	.755 WAS OUTSIDE DIM.	5/9/60	2245	cy		
B	2	1/8 WAS 7/16	4-11-60	2119			
B	1	.750 ±.002-000 WAS 1/8 O.D.					
A	1	CHART ADDED	2/24/60				

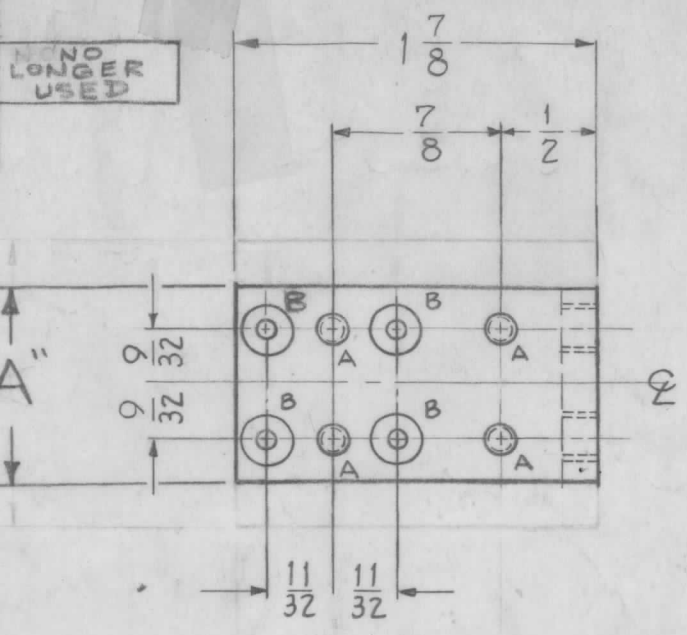
TOLERANCES		SCALE: FULL SIZE	
DEC. DIM. ±		MAXIMUM ALLOWABLE TOLERANCES HAVE BEEN DETERMINED AND ANY DEVIATIONS WILL BE CAUSE FOR REJECTION.	
FRAC. DIM. ±		REMOVE ALL BURRS AND SHARP EDGES	
ANGULAR DIM. ±	Y64		

REQ. PER UNIT	MODEL	PROJECT NO.	ASSY. NO.	DATE
	AX-244	GPT 40K		2-2-60
USED ON				

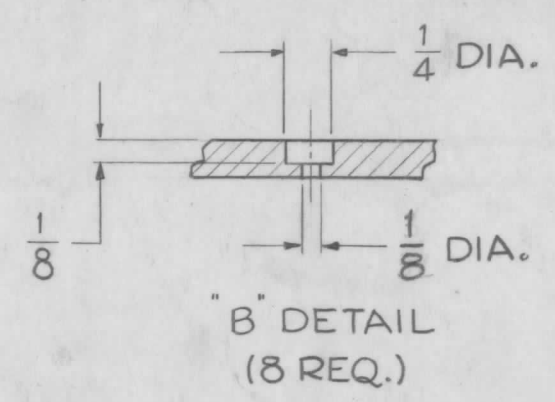
REQ.	ITEM	PART NO.	DESCRIPTION	SYMBOL
B	1	SM1032BP.750	ROD, THREADED	
THE TECHNICAL MATERIEL CORP. MAMARONECK, NEW YORK				
STOCK SIZE				
BRASS				
MATERIAL				
			J.C. Biele	
TYPE & TEMPER		HEAT TREAT. SPEC.	DRAWN	CHECKED
S245 SILVER PLATE				
S423 SILVER KOTE IRDITE				
FINISH & SPEC. NO.		ELEC. DES. APP.	MECH. DES. APP.	FINAL APPROVAL
				PM 50015

PM-598 F

PART NO	"A" DIM	MODEL	
		SECTION	REQ
PM-598-1	1 1/2	AX-244	1
PM-598-2	1	AX-244	10



HOLES ~
 A ~ DRILL & TAP FOR 10-32 (FOR SM1032-B-P-.750) 8 REQ.
 B ~ DRILL & TAP 1/4-20 2 REQ.



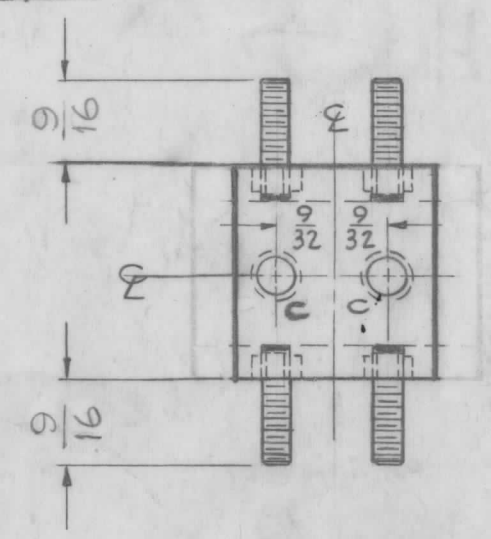
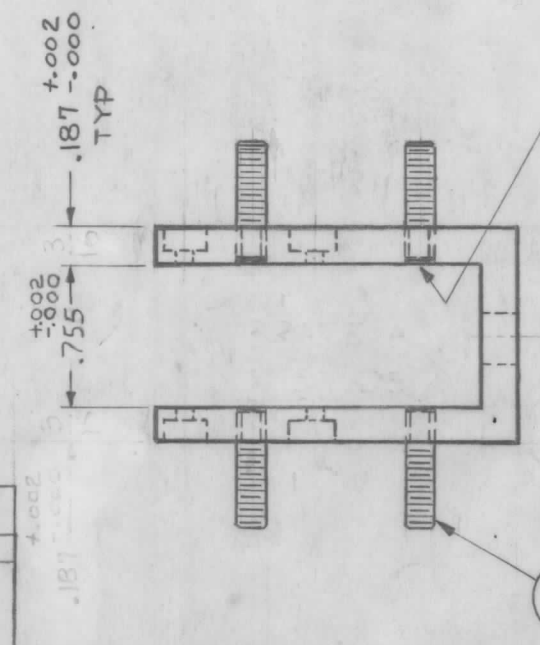
NOTICE TO PERSONS RECEIVING THIS DRAWING

THE TECHNICAL MATERIEL CORPORATION claims proprietary right in the material disclosed hereon. This drawing is issued in confidence for engineering information only and may not be reproduced or used to manufacture anything shown hereon without permission from THE TECHNICAL MATERIEL CORPORATION to the user. This drawing is loaned for mutual assistance and is subject to recall at any time.

Property of:

THE TECHNICAL MATERIEL CORPORATION
 MAMARONECK, NEW YORK

SILVER SOLDER AS SHOWN.



F	1	ITEM (1) WAS SM1032BP.750	2-7-63	8137			
E	1	.187 ±.002 DIM WAS 3/16	8-14-62	7069	G.S.		
D	6	ON PM-598-2, CHG'D. REQ. FROM 7 to 10	7-	5	R.		
	5	ON PM-598-1, ADDED "NO LONGER USED."	25-	3			
	4	ON DETAIL "B", 1/8 DIA. WAS 3/32 DIA.		2	U		
	3	Item (1) WAS SM1032BP.562	61	2			
	2	STUD DIM 9/16 WAS 1/2					
	1	FINISH WAS GOLD PLATED .000125					
C	1	.755 WAS OUTSIDE DIM.	5/9/60	2245	cy		
B	2	1/2 WAS 7/16	4-11-60	2119			
A	1	.750 ±.002-0.00 WAS .1/8 OD	2/26/60				
		CHART ADDED					

ISSUE ITEM	CHANGED FROM	DATE	CH. NO.	DRAFTS	CHECKER	ENG. APP.
TOLERANCES		SCALE: FULL DIM (30A-E)				
DEC. DIM. ±		MAXIMUM ALLOWABLE TOLERANCES HAVE BEEN DETERMINED AND ANY DEVIATIONS WILL BE CAUSE FOR REJECTION.				
FRAC. DIM. ±		REMOVE ALL BURRS AND SHARP EDGES				
ANGULAR DIM. ±		Y64				

REQ. PER UNIT	MODEL	PROJECT NO.	ASS'Y. NO.	DATE
	AX-244	GPT 40K		2-2-60
USED ON				

REQ. ITEM	PART NO.	DESCRIPTION	SYMBOL
8	1	SM1032BP.750 ROD, THREADED	
STOCK SIZE		THE TECHNICAL MATERIEL CORP. MAMARONECK, NEW YORK	
MATERIAL		BRASS	
		BRACKET, WAFER R.F. BANDSWITCH	
		J.C. Biele	DB
TYPE & TEMPER		HEAT TREAT. SPEC.	DRAWN
S245 SILVER PLATE			CHECKED
S423 SILVER KOTE IRIDITE			FINAL APPROVAL
FINISH & SPEC. NO.		ELEC. DES. APP.	MECH. DES. APP.
			PM-598 F