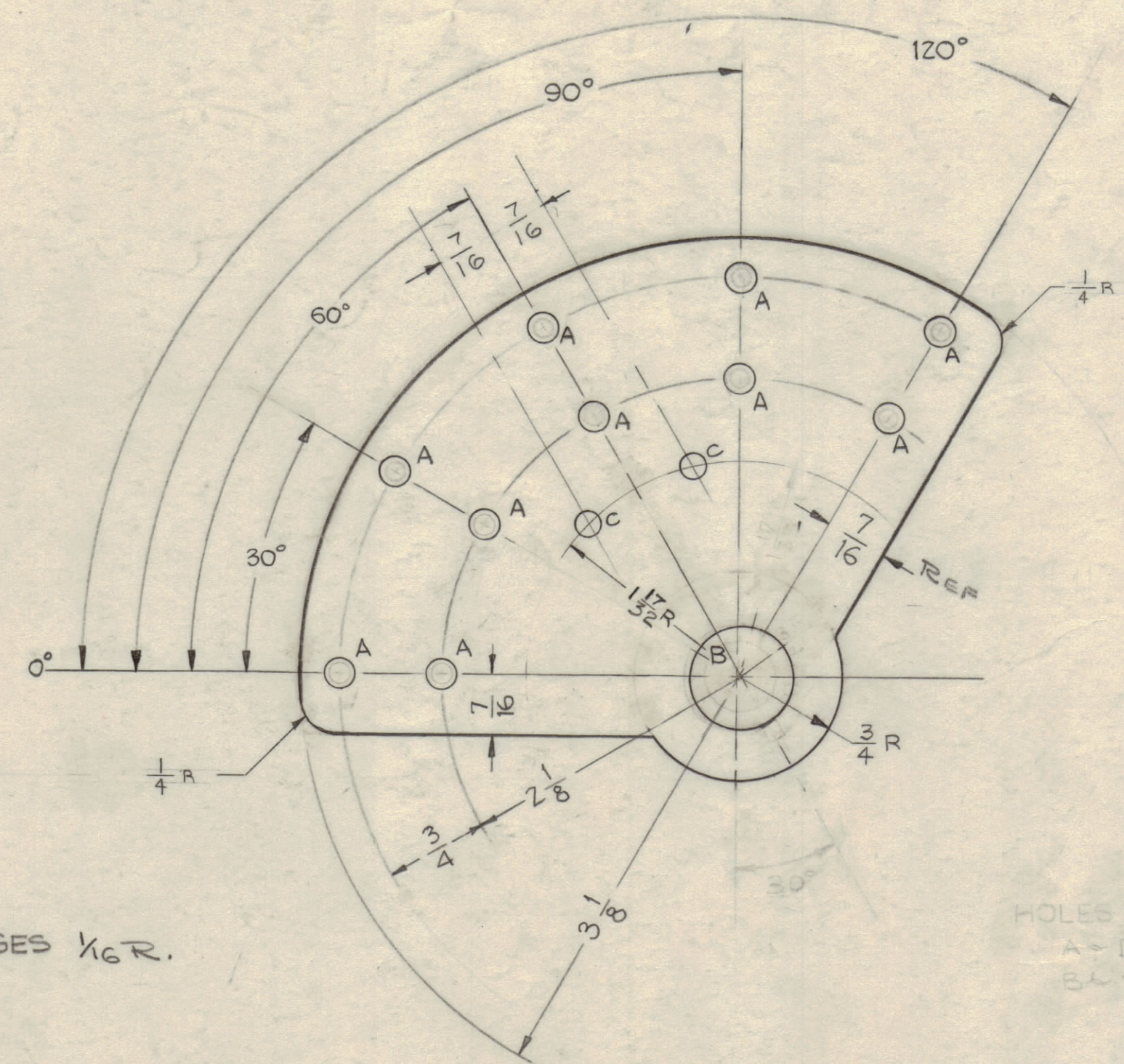


IF IT IS FOUND DESIRABLE TO CHANGE ANY TOLERANCE OR OTHER DETAIL SPECIFIED ON THIS DRAWING NOTIFY THE PURCHASER PROMPTLY.

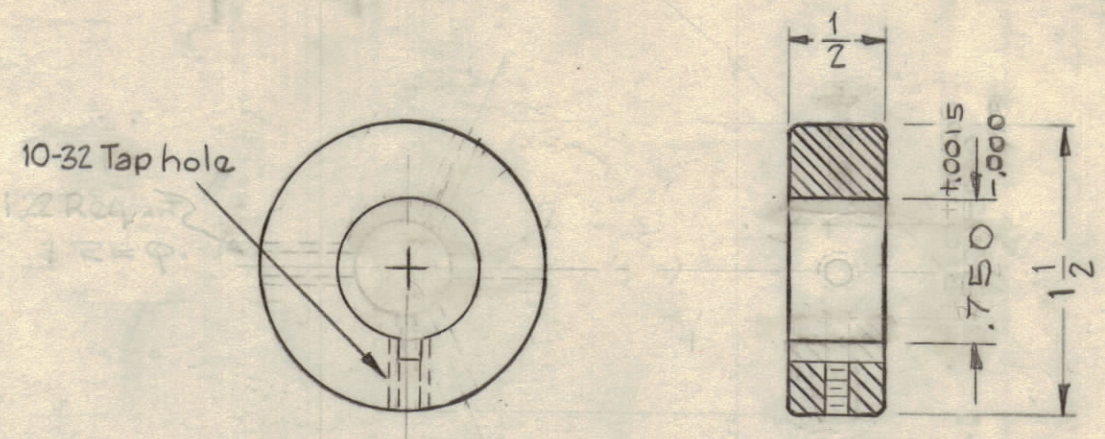
MAXIMUM ALLOWABLE TOLERANCES HAVE BEEN DETERMINED AND DEVIATIONS WILL BE CAUSE FOR REJECTION. REMOVE ALL BURRS AND SHARP EDGES.

HOLES	REQ.
A ~ 13/64 D.	10
B ~ .750 ±.0015 DIA.	1
C ~ 11/64 D.	2



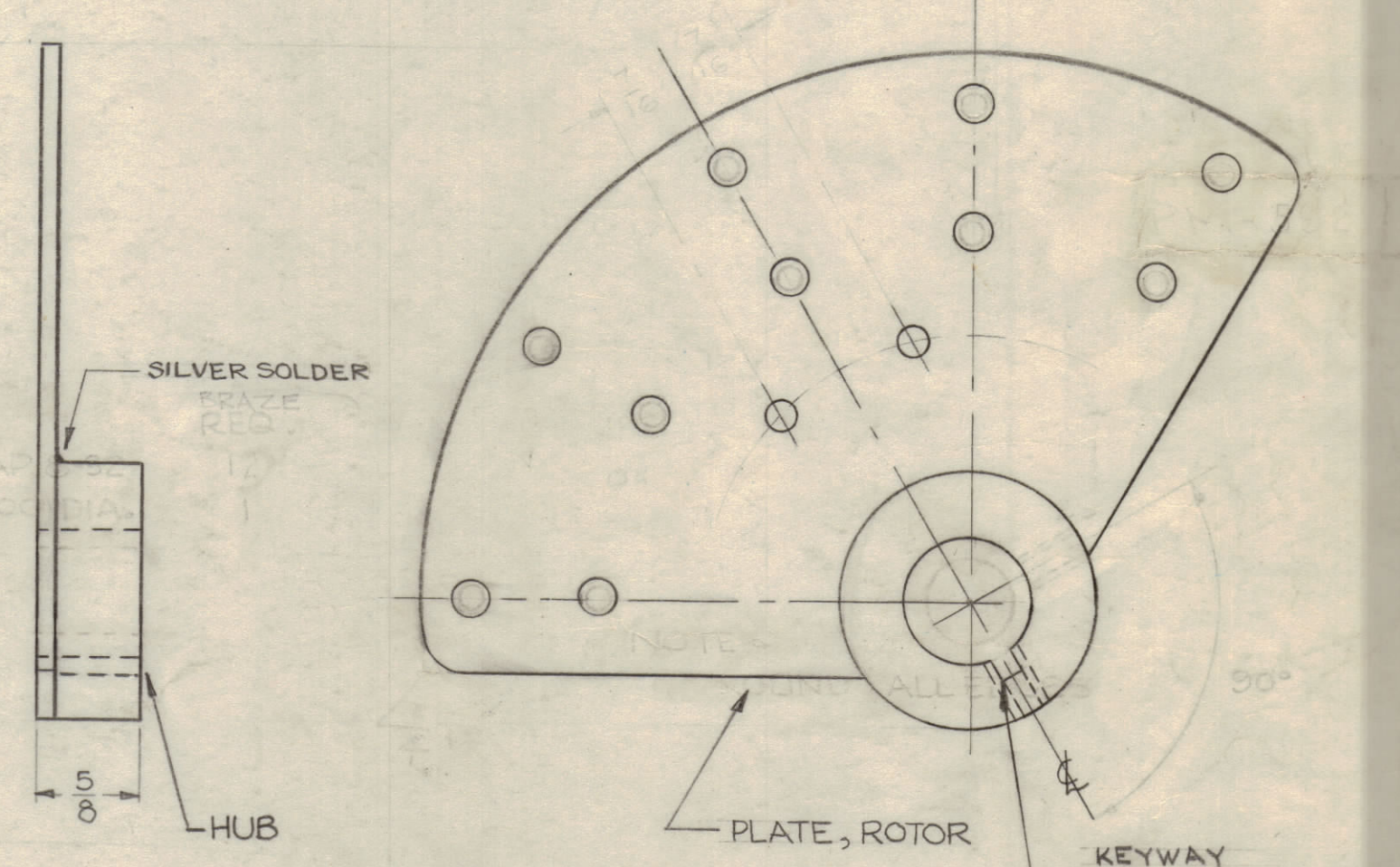
NOTE ~
ROUND ALL EDGES 1/16 R.

"PLATE-ROTOR DETAIL"
Material - 1/8 THK. BRASS, 1/2 HARD
Finish - 1 Req'd.



"HUB DETAIL"
Material - BRASS, FREE TURNING
1 Required

NOTE:
RELATIONSHIP BETWEEN KEYWAY, TAPPED HUB HOLE AND ROTOR PLATE.



ASSEMBLY
Finish - .000025 RHODIUM
NOTE: MAKE KEYWAY AFTER ASSY

ISSUE	ITEM	CHANGED FROM	DATE	CH. NO.	DRAFTS	CHECKER	ENG. APP.
G	1	Obsolete, Note Added	2-15-62	6371	1/1		
F	1	TAPPED HOLE RELOCATED	10/15/60	3171			
	3	HUB DETAIL TOLERANCE WAS .0005					
E	2	KEYWAY 1/8 WIDE X .070 DEEP WAS 1/8 WIDE X .125 DEEP	8/11/60	275A			
	1	HUB DETAIL .750 WAS .753					
D	2	"A" WAS 8-32 TAP ADDED (2) "C" HOLES	4/10/60	2167			
C	1	IN HUB DETAIL .753 WIC. .75	3-21-60				
B	1	ADDED KEYWAY DELETED 2 TAP HOLES	3-17-60				
A	1	"B" WAS .500	2/23/60				

NOTICE TO PERSONS RECEIVING THIS DRAWING

THE TECHNICAL MATERIEL CORPORATION claims proprietary right in the material disclosed hereon. This drawing is issued in confidence for engineering information only and may not be reproduced or used to manufacture anything shown hereon without permission from THE TECHNICAL MATERIEL CORPORATION to the user. This drawing is loaned for mutual assistance and is subject to recall at any time.

Property of:
THE TECHNICAL MATERIEL CORPORATION
MAMARONECK, NEW YORK

OBSOLETE

FOR SPARE PARTS USE ONLY
2-15-62

REQ. PER UNIT	MODEL	PROJECT NO.	ASSY. NO.	DATE
1	AX-209	GPT-40K		1-23-60

REQ. ITEM	PART NO.	DESCRIPTION	SYMBOL
See Notes		THE TECHNICAL MATERIEL CORP. MAMARONECK, NEW YORK	
See Notes		ROTOR, "L" SECTION, PA BANDS	
		GPT-40K	
		DA Tolan	
		DRWN	
		ELEC. DES. APP.	
		MECH. DES. APP.	
		CHECKED	
		FINAL APPROVAL	
			PM-592 G