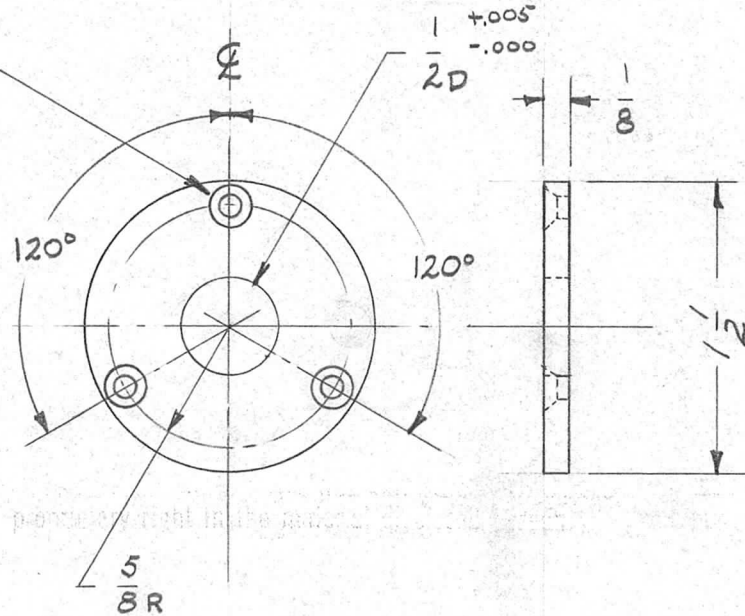


REQ. PER. UNIT	USED ON		
	MODEL	ASS'Y. NO.	DATE
2	RFB-1	A-1625	7/6/59
4	GPT-10K	A-1625	"
2	GPT-750	A-1625	"
2	RFD-1	A-1625	6-23-59

PM-566

C'SINK 6-32 F.H.S.  
3 REQ'D.



NOTICE TO PERSONS RECEIVING THIS DRAWING

THE TECHNICAL MATERIEL CORPORATION claims proprietary right in the material disclosed hereon. This drawing is issued in confidence for engineering information only and may not be reproduced or used to manufacture anything shown hereon without permission from THE TECHNICAL MATERIEL CORPORATION to the user. This drawing is loaned for mutual assistance and is subject to recall at any time.

Property of:

THE TECHNICAL MATERIEL CORPORATION  
MAMARONECK, NEW YORK

							REQ. ITEM	PART NO.	DESCRIPTION	SYMBOL								
							1/8		THE TECHNICAL MATERIEL CORP.									
							STOCK SIZE		MAMARONECK, NEW YORK									
							ALUMINUM		MOUNTING PLATE									
							MATERIAL		GPT-10K	IPA								
ISSUE	ITEM	CHANGED FROM	DATE	CH. NO.	DRAFTS	CHECKER	ENG. APP.	5052-H32	DRILLO	JAW								
TOLERANCES			SCALE:															
DEC. DIM. ±			MAXIMUM ALLOWABLE TOLERANCES HAVE BEEN DETERMINED AND ANY DEVIATIONS WILL BE CAUSE FOR REJECTION. REMOVE ALL BURRS AND SHARP EDGES				TYPE & TEMPER		HEAT TREAT. SPEC.		DRAWN		CHECKED		FINAL APPROVAL			
FRAC. DIM. ±							S404 IRIDITE				ATB		JAW					
ANGULAR DIM. ±																		
							FINISH & SPEC. NO.		ELEC. DES. APP		MECH. DES. APP		PM-566					