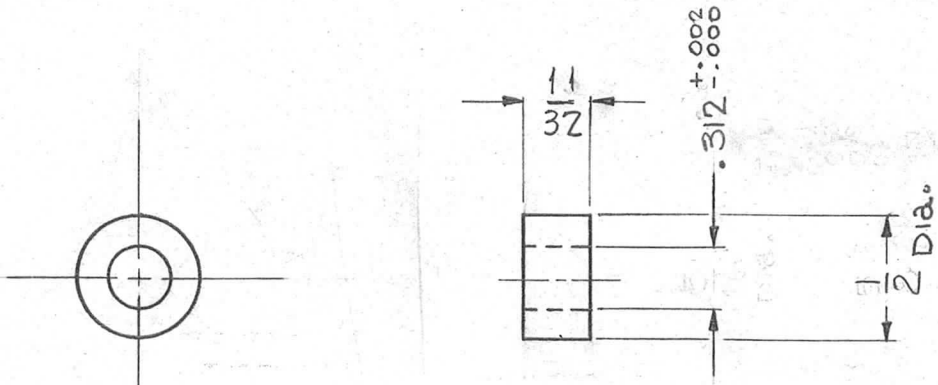


REQ. PER. UNIT	USED ON		
	MODEL	ASS'Y. NO.	DATE
1	AS-119		2-25-59

PM-559 C

10K



NOTICE TO PERSONS RECEIVING THIS DRAWING

THE TECHNICAL MATERIEL CORPORATION claims proprietary right in the material disclosed hereon. This drawing is issued in confidence for engineering information only and may not be reproduced or used to manufacture anything shown hereon without permission from THE TECHNICAL MATERIEL CORPORATION to the user. This drawing is loaned for mutual assistance and is subject to recall at any time.

Property of:
THE TECHNICAL MATERIEL CORPORATION
MAMARONECK, NEW YORK

REQ.	ITEM	PART NO.	DESCRIPTION		SYMBOL										
C		11/32 WAS 13/32	2-2-66	15688	AM	THE TECHNICAL MATERIEL CORP. MAMARONECK, NEW YORK BUSHING, WORM GEAR BAND SWITCH									
B	2	13/32 DIM WAS 11/32 1/2 DIA. WAS 5/8 DIA.	3-10-64	10990	AM										
A		DIM .312 ^{+0.002} WAS 5/16 ^{+0.001}	5-6-63	8947	AM										
ISSUE	ITEM	CHANGED FROM	DATE	CH. NO.	DRAFTS	CHECKER	ENG. APP.	MATERIAL		J.C. BIELE		GPT 10K			
TOLERANCES			SCALE:					TYPE & TEMPER		HEATTREAT. SPEC.		DRAWN		CHECKED	
DEC. DIM. ± FRAC. DIM. ± ANGULAR DIM. ±			MAXIMUM ALLOWABLE TOLERANCES HAVE BEEN DETERMINED AND ANY DEVIATIONS WILL BE CAUSE FOR REJECTION. REMOVE ALL BURRS AND SHARP EDGES					FINISH & SPEC. NO.		ELEC. DES. APP		MECH. DES. APP		FINAL APPROVAL	
										PM-559		C			