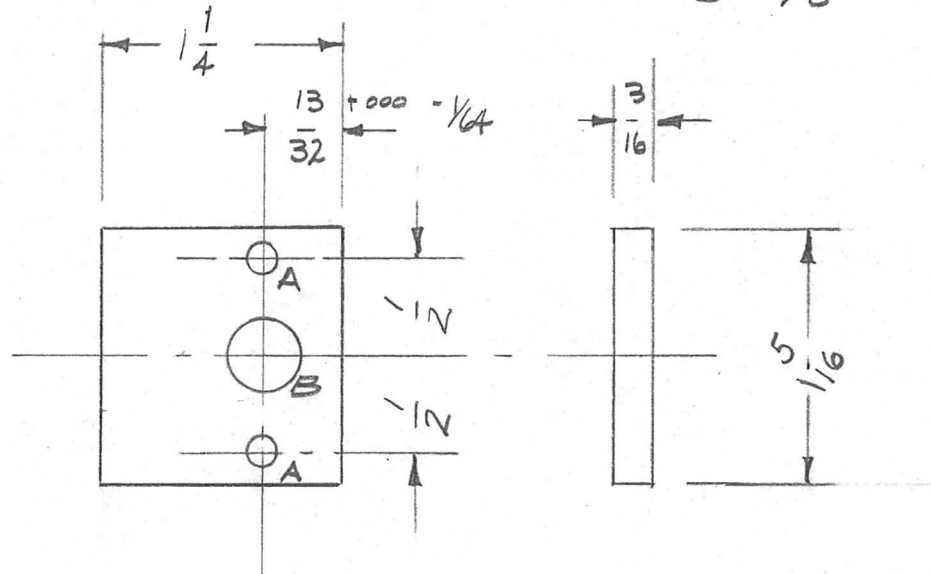


REQ. PER. UNIT	USED ON			PM 556
	MODEL	ASS'Y. NO.	DATE	
2	GPT-10000	A-1643	2-20-59	

HOLES
A - 5/32 DIA
B - 3/8 "

REQ'D
2
1



REQ.	ITEM	PART NO.	DESCRIPTION		SYMBOL					
		3/16 THICK STOCK SIZE	THE TECHNICAL MATERIEL CORP. MAMARONECK, NEW YORK							
		ALUMINUM	SHIM, PANEL LOCK							
		MATERIAL								
ISSUE	ITEM	CHANGED FROM	DATE	CH. NO.	DRAFTS	CHECKER	ENG. APP.			
TOLERANCES			SCALE:			2024-T4		TORICED	JDe	ARB
DEC. DIM. ± FRAC. DIM. ± ANGULAR DIM. ±			MAXIMUM ALLOWABLE TOLERANCES HAVE BEEN DETERMINED AND ANY DEVIATIONS WILL BE CAUSE FOR REJECTION. REMOVE ALL BURRS AND SHARP EDGES			TYPE & TEMPER 3101 CAUSTIC D IP 5114 CHROMATE ZINC 5115 TMC GRAY	HEATTREAT. SPEC.	DRAWN J.D.	CHECKED 2B	FINAL APPROVAL PM 556
						FINISH & SPEC. NO.	ELEC. DES. APP	MECH. DES. APP		