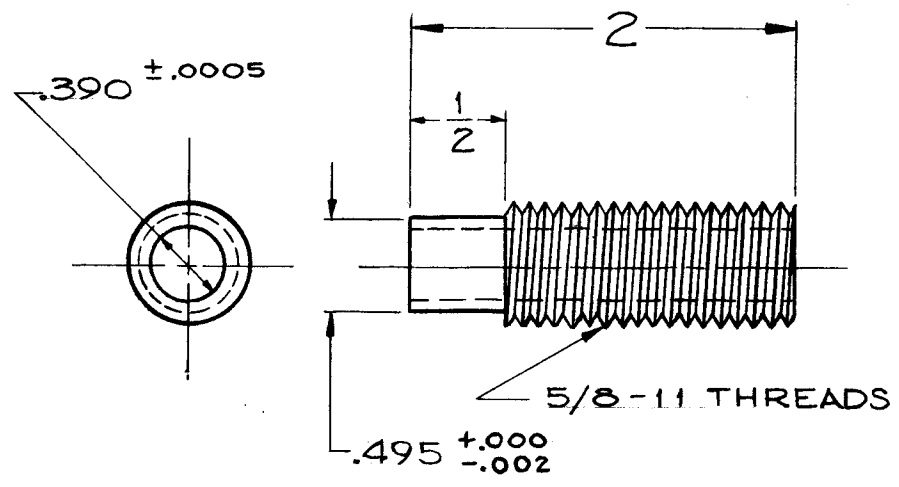
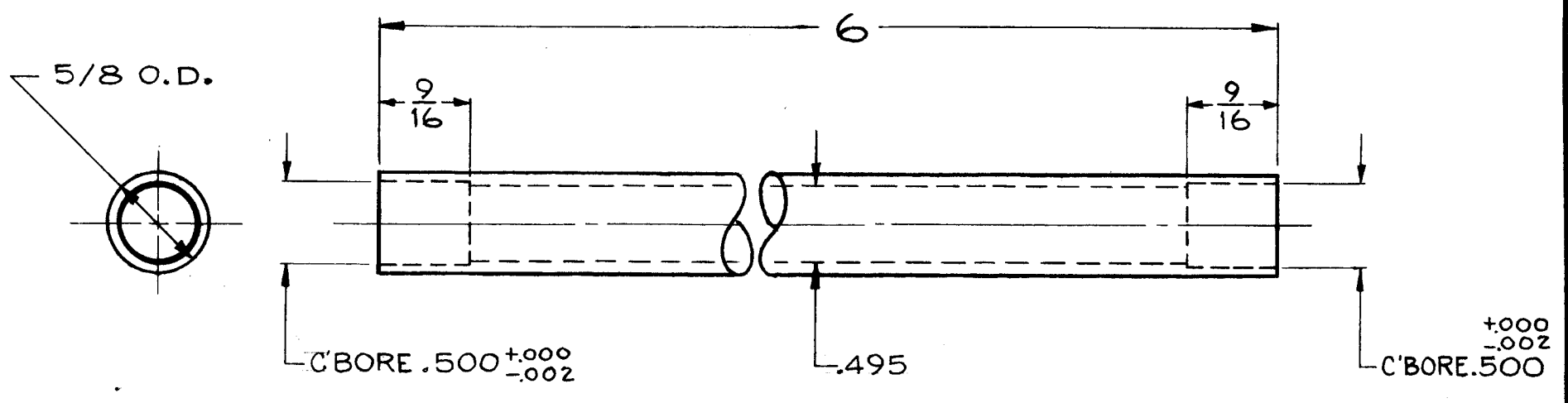


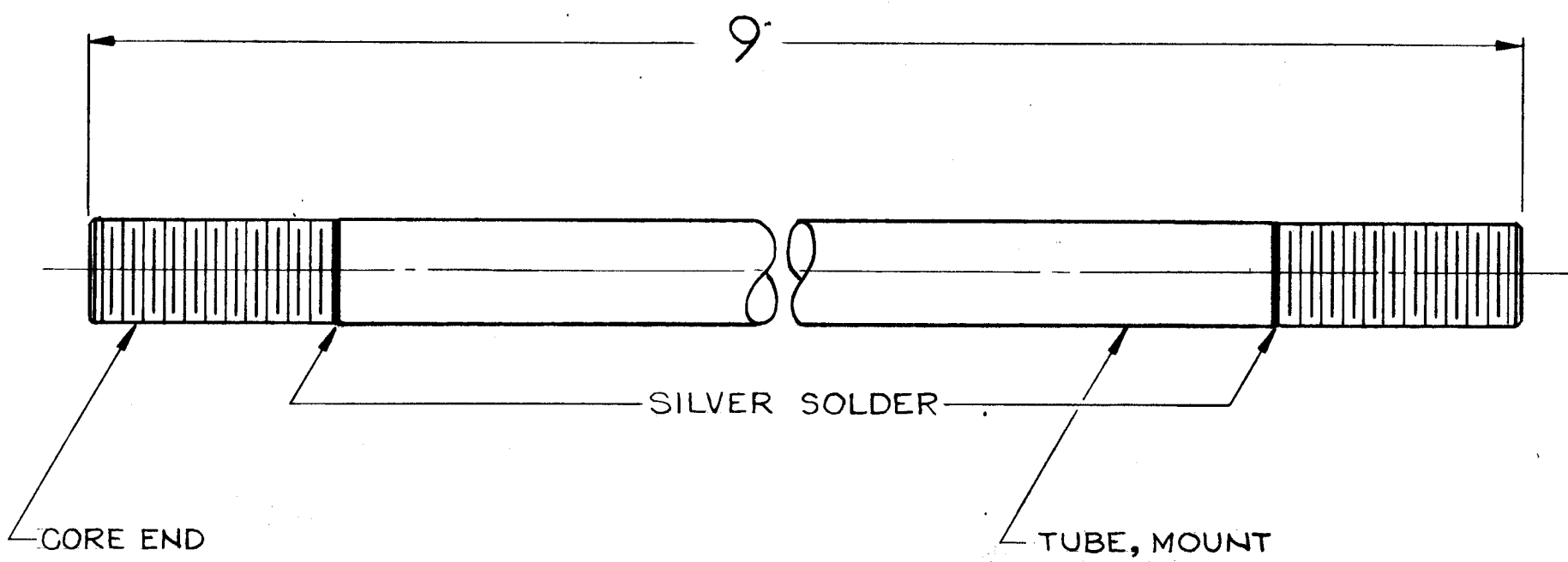
PM-535 B



MAT'L ~ 5/8 DIA. BRASS ROD,  
CORE END ~ 2 REQ.



MAT'L ~ 5/8 O.D. X .495 I. D. BRASS TUBING, TYPE & TEMPER ~ 165G,  
TUBE, MOUNT ~ 1 REQ.



**NOTES ~**  
**1-FINISH~**

NICKEL PLATE .0003 AFTER SILVER SOLDERING ON BOTH CORE ENDS.  
2-.390 ±.0005 I. D. OF CORE ENDS TO BE CONCENTRIC WITH 5/8 O.D..

**NOTICE TO PERSONS RECEIVING THIS DRAWING**

THE TECHNICAL MATERIEL CORPORATION claims proprietary right in the material disclosed hereon. This drawing is issued in confidence for engineering information only and may not be reproduced or used to manufacture anything shown hereon without permission from THE TECHNICAL MATERIEL CORPORATION to the user. This drawing is loaned for mutual assistance and is subject to recall at any time.

Property of:  
THE TECHNICAL MATERIEL CORPORATION  
MAMARONECK, NEW YORK

ISSUE	ITEM	CHANGED FROM	DATE	CH. NO.	DRAFTS	CHECKER	ENG. APP.
B	2	9" Dim was 8 5/8"	4/4/59	1107	J.C.B.	<i>[Signature]</i>	<i>[Signature]</i>
A	1	6" Dim was 5 5/8"	3/26/59		J.C.B.	<i>[Signature]</i>	<i>[Signature]</i>
TOLERANCES		SCALE:					
DEC. DIM. ±		MAXIMUM ALLOWABLE TOLERANCES HAVE BEEN DETERMINED AND ANY DEVIATIONS WILL BE CAUSE FOR REJECTION.					
FRAC. DIM. ±		REMOVE ALL BURRS AND SHARP EDGES					
ANGULAR DIM. ±							

2	GPT-10,000	RF DECK	3-26-59
REQ. PER UNIT	MODEL	PROJECT NO.	ASS'Y. NO.
			DATE
USED ON			

REQ. ITEM	PART NO.	DESCRIPTION	SYMBOL
AS SHOWN		THE TECHNICAL MATERIEL CORP. MAMARONECK, NEW YORK	
AS SHOWN		CORE, MOUNT ANTENNA TUNER	
AS SHOWN		J. C. BIELE	<i>[Signature]</i>
TYPE & TEMPER	HEAT TREAT. SPEC.	DRAWN	CHECKED
SEE NOTE		<i>[Signature]</i>	FINAL APPROVAL
FINISH & SPEC. NO.	ELEC. DES. APP.	MECH. DES. APP.	PM-535 B