

HOLES

REQ'D

REQ. PER UNIT	USED ON		
	MODEL	ASS'Y. NO.	DATE
1	GPT-10K	A-1640	1-30-59

PM-534 D

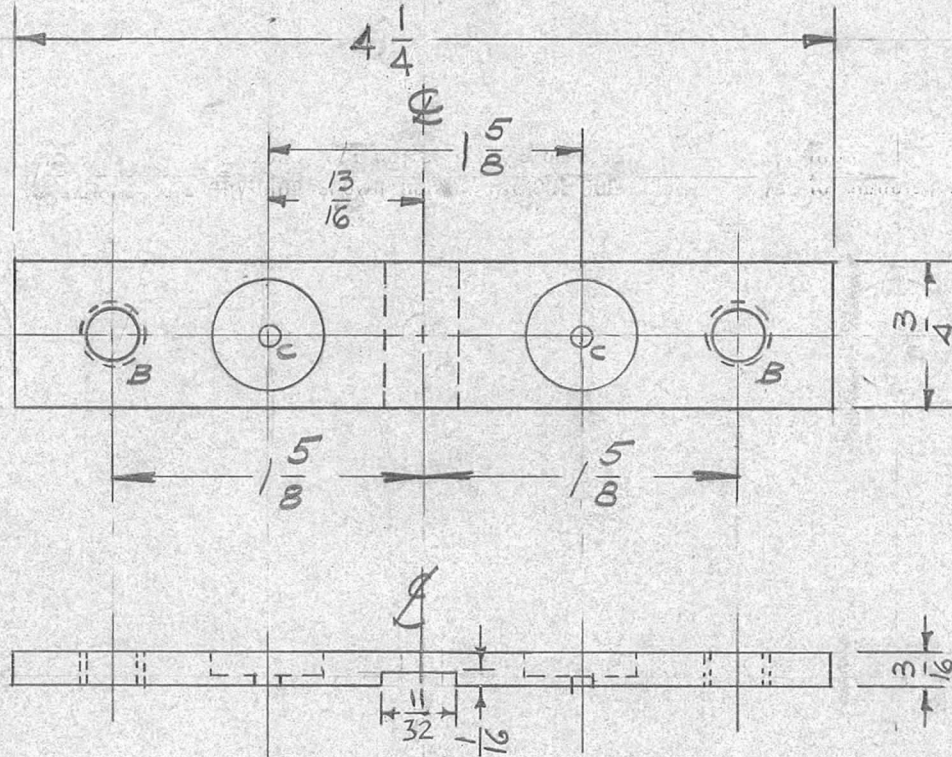
B - TAPPED 1/4-20 2  
 C - 9/16 DIA. X 1/8 Deep C'BORE. 2  
 w/ 5/32 PILOT HOLE

NOTICE TO PERSONS RECEIVING THIS DRAWING

THE TECHNICAL MATERIEL CORPORATION claims proprietary right in the material disclosed hereon. This drawing is issued in confidence for engineering information only and may not be reproduced or used to manufacture anything shown hereon without permission from THE TECHNICAL MATERIEL CORPORATION to the user. This drawing is loaned for mutual assistance and is subject to recall at any time.

Property of:

THE TECHNICAL MATERIEL CORPORATION  
 MAMARONECK, NEW YORK



D	1	11/32 DIM. WAS 3/8.	2-25-65	13585	OR	JCA	OR
C	1	3/4 X 1/16 X 3/8 SLOT ADDED	10-13-60	3187	MG	JHE	DB
B	3	4 1/4 WAS 6	11/18/59	1505	HLE	HLE	JMC
	2	ONE "C" HOLE DELETED					
	1	"A" HOLES DELETED					
A	1	LEFT END "A" HOLE WAS "C" HOLE	8/26/59	1230	16	HLE	DT

REQ.	ITEM	PART NO.	DESCRIPTION		SYMBOL
			THE TECHNICAL MATERIEL CORP. MAMARONECK, NEW YORK		
			3/16 THICK STOCK SIZE		
			BRASS		
			MATERIAL		
			HALF HARD		
			TYPE & TEMPER		
			HEAT TREAT. SPEC.		
			DRAWN		
			CHECKED		
			FINAL APPROVAL		
			FINISH & SPEC. NO.		
			ELEC. DES. APP		
			MECH. DES. APP		

DEC. DIM. ±  
 FRAC. DIM. ± 1/64  
 ANGULAR DIM. ±

SCALE:  
 MAXIMUM ALLOWABLE TOLERANCES HAVE BEEN DETERMINED AND ANY DEVIATIONS WILL BE CAUSE FOR REJECTION.  
 REMOVE ALL BURRS AND SHARP EDGES

PM-534 D