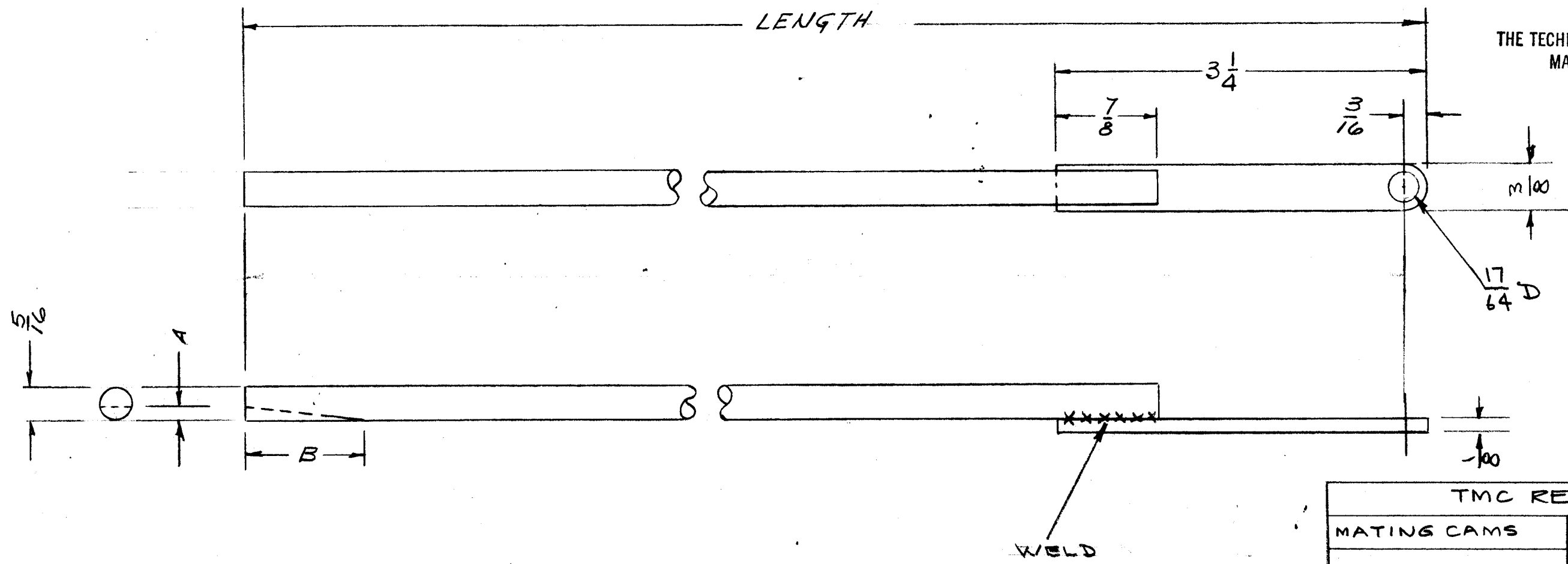


PM-531-B

CHART 1			
CODE	TYPE	A	B
A	PLAIN	NONE	NONE
B	BEVELED	1/8"	1"

NOTICE TO PERSONS RECEIVING THIS DRAWING
 THE TECHNICAL MATERIEL CORPORATION claims proprietary right in the material disclosed hereon. This drawing is issued in confidence for engineering information only and may not be reproduced or used to manufacture anything shown hereon without permission from THE TECHNICAL MATERIEL CORPORATION to the user. This drawing is loaned for mutual assistance and is subject to recall at any time.

Property of:
 THE TECHNICAL MATERIEL CORPORATION
 MAMARONECK, NEW YORK



PM531-A-36.52

TMC PART No. SEE CHART 1 LENGTH (INCHES)
 IE = 36.56 = 36 9/16"

TMC REF. NOTE	
MATING CAMS	MATING HANDLES
PO-186	HA-114

ISSUE	ITEM	CHANGED FROM	DATE	CH. NO.	DRAFTS	CHECKER	ENG. APP.
B	1	17/64 D. HOLE WAS 1/4 D.	10/29/59	1500	16	HA	AK
A	1	STANDARDIZED DWG	10/6/59	1385	HA	HA	AK

TOLERANCES: DEC. DIM. ±, FRAC. DIM. ±, ANGULAR DIM. ±

SCALE: MAXIMUM ALLOWABLE TOLERANCES HAVE BEEN DETERMINED AND ANY DEVIATIONS WILL BE CAUSE FOR REJECTION. REMOVE ALL BURRS AND SHARP EDGES

REQ. PER UNIT	PART NO.	MODEL.	SECTION	DATE
2	PM-531-B-27.68	RAK-9		
B	PM-531-A-36.56	GPT-10K	AX-188	
B	PM-531-A-36.56	GPT-10K	AX-185	
B	PM-531-A-36.56	GPT-10K	AX-166	

USED ON

REQ. ITEM	PART NO.	DESCRIPTION	SYMBOL
AS SHOWN		THE TECHNICAL MATERIEL CORP. MAMARONECK, NEW YORK	
STOCK SIZE			
MILD STEEL		ROD, DOOR LATCH	
MATERIAL			
TYPE & TEMPER	HEAT TREAT. SPEC.	DRAWN	CHECKED
NICKEL PLATE			
FINISH & SPEC. NO.	ELEC. DES. APP.	MECH. DES. APP.	

2/3/59
 DRAWN: [Signature]
 CHECKED: [Signature]
 FINAL APPROVAL: [Signature]
 PM-531 B