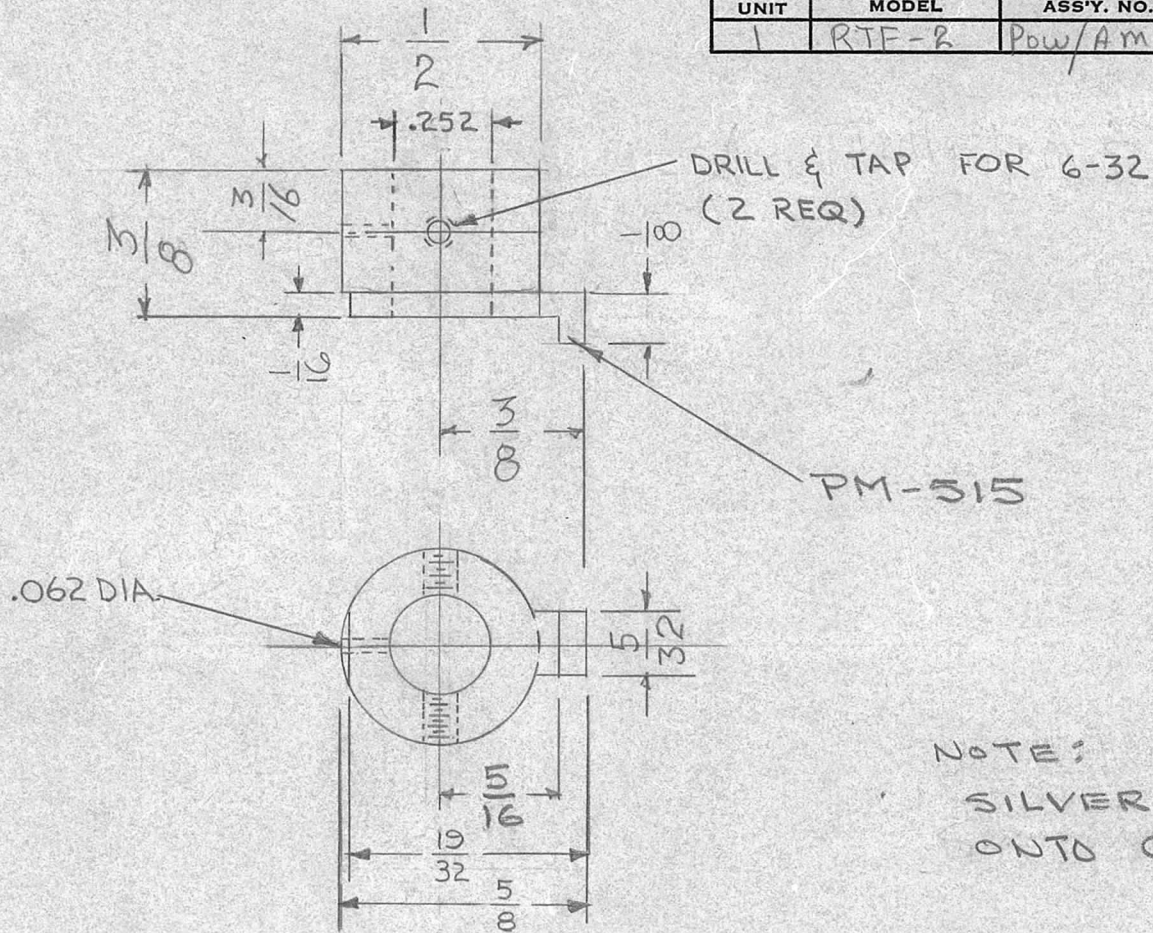


REQ. PER UNIT	USED ON			PM-519	D
	MODEL	ASS'Y. NO.	DATE		
1	RTF-2	POW/AMP			



NOTE:
SILVER BRAZE PM-515
ONTO COLLAR

C		ADDED DRILL & TAP NOTE	11/9/66	17215	RME	<i>[Signature]</i>	REQ.	ITEM	PART NO.	DESCRIPTION	SYMBOL	
B		RELOC. 1/8 DIM. ADD 1/16 DIM. DELE 1/4 DIM. ADD .252 & 19/32 DIM REV. .062 DIA. DIM.	9-12-66	16832	RME	<i>[Signature]</i>				THE TECHNICAL MATERIEL CORP. MAMARONECK, NEW YORK		
A	1	ADDED FINISH SPEC	3-18-63	8543	RC	<i>[Signature]</i>	BRASS			LOCK, COLLAR		
ISSUE	ITEM	CHANGED FROM	DATE	CH. NO.	DRAFTS	CHECKER	ENG. APP.	MATERIAL				
TOLERANCES			SCALE:				FREE MACHINING	<i>file</i>	<i>file</i>	<i>[Signature]</i>		
DEC. DIM. ± FRAC. DIM. ± ANGULAR DIM. ±			MAXIMUM ALLOWABLE TOLERANCES HAVE BEEN DETERMINED AND ANY DEVIATIONS WILL BE CAUSE FOR REJECTION. REMOVE ALL BURRS AND SHARP EDGES				TYPE & TEMPER	HEAT TREAT. SPEC.	DRAWN	CHECKED	FINAL APPROVAL	
							S135 NICKEL PLATE				PM-519	D
							FINISH & SPEC. NO.	ELEC. DES. APP.	MECH. DES. APP.			