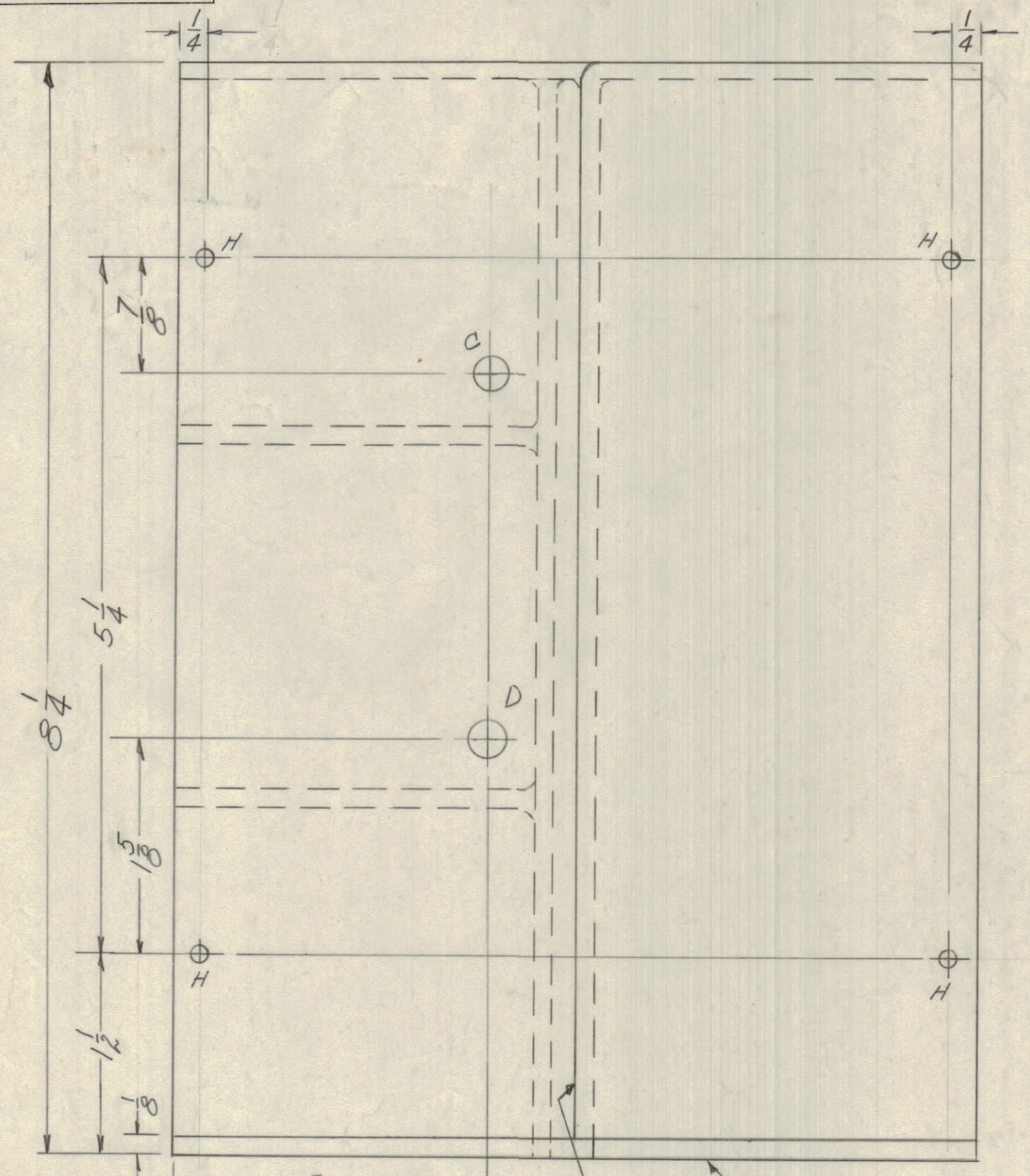
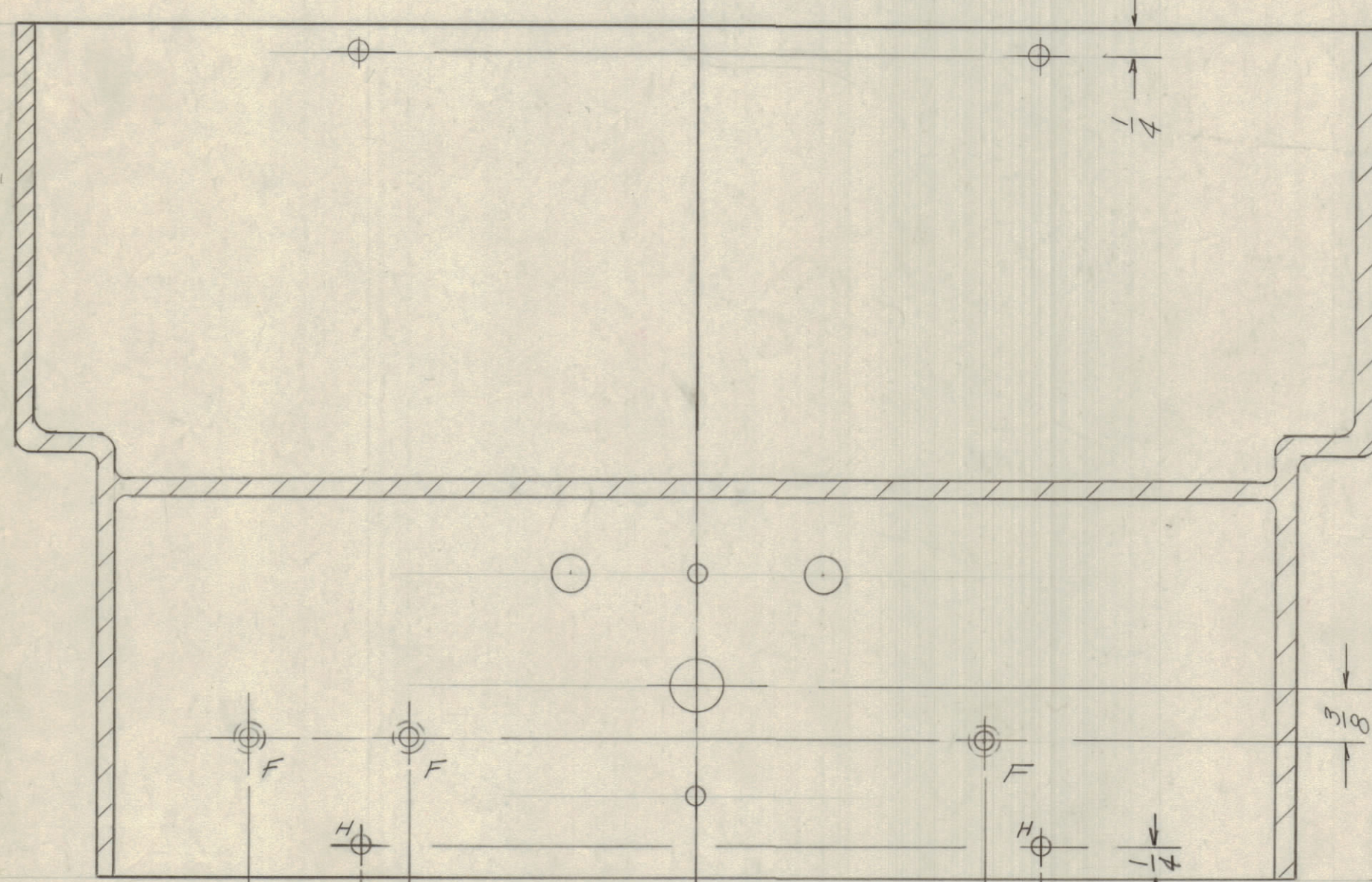
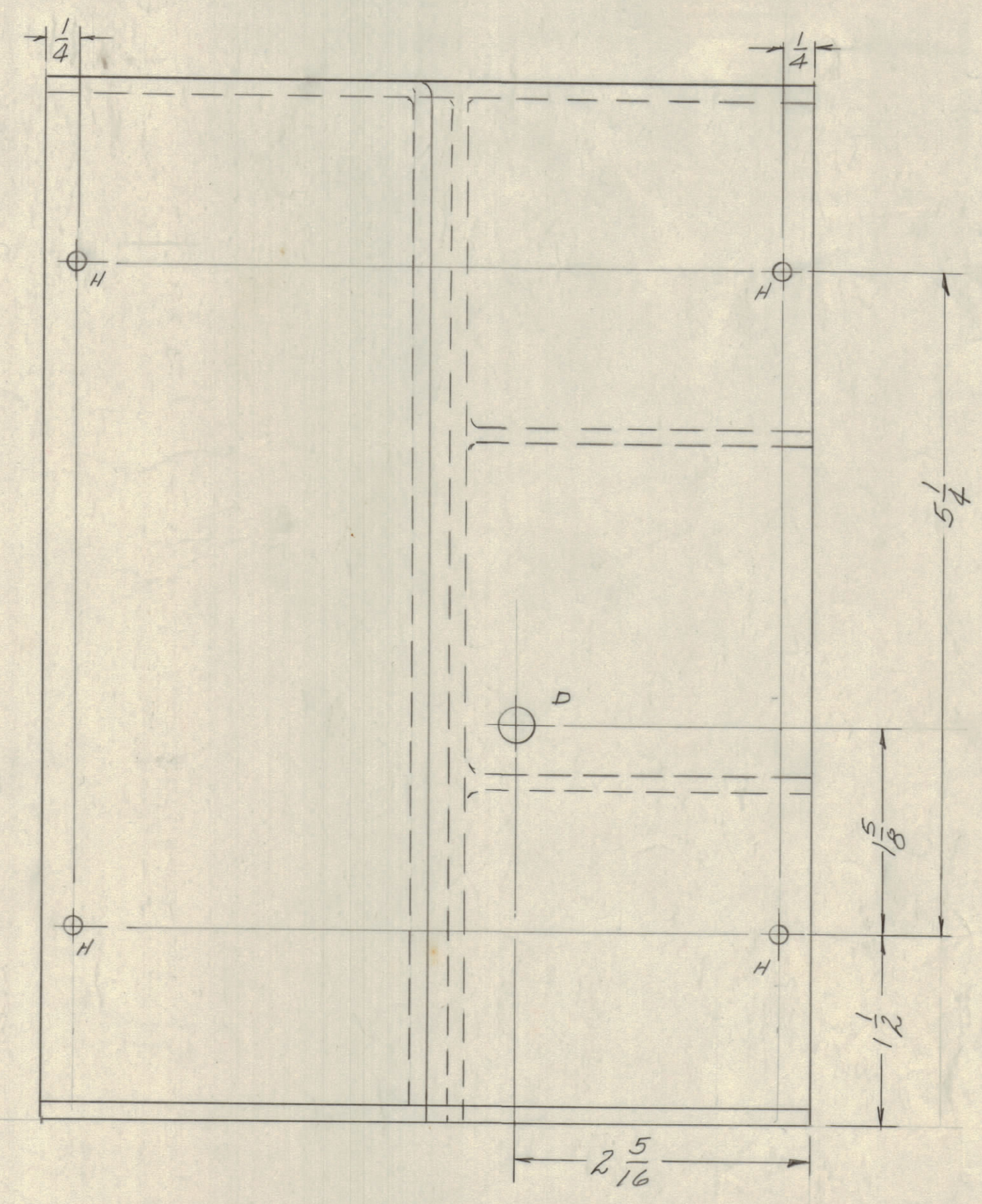
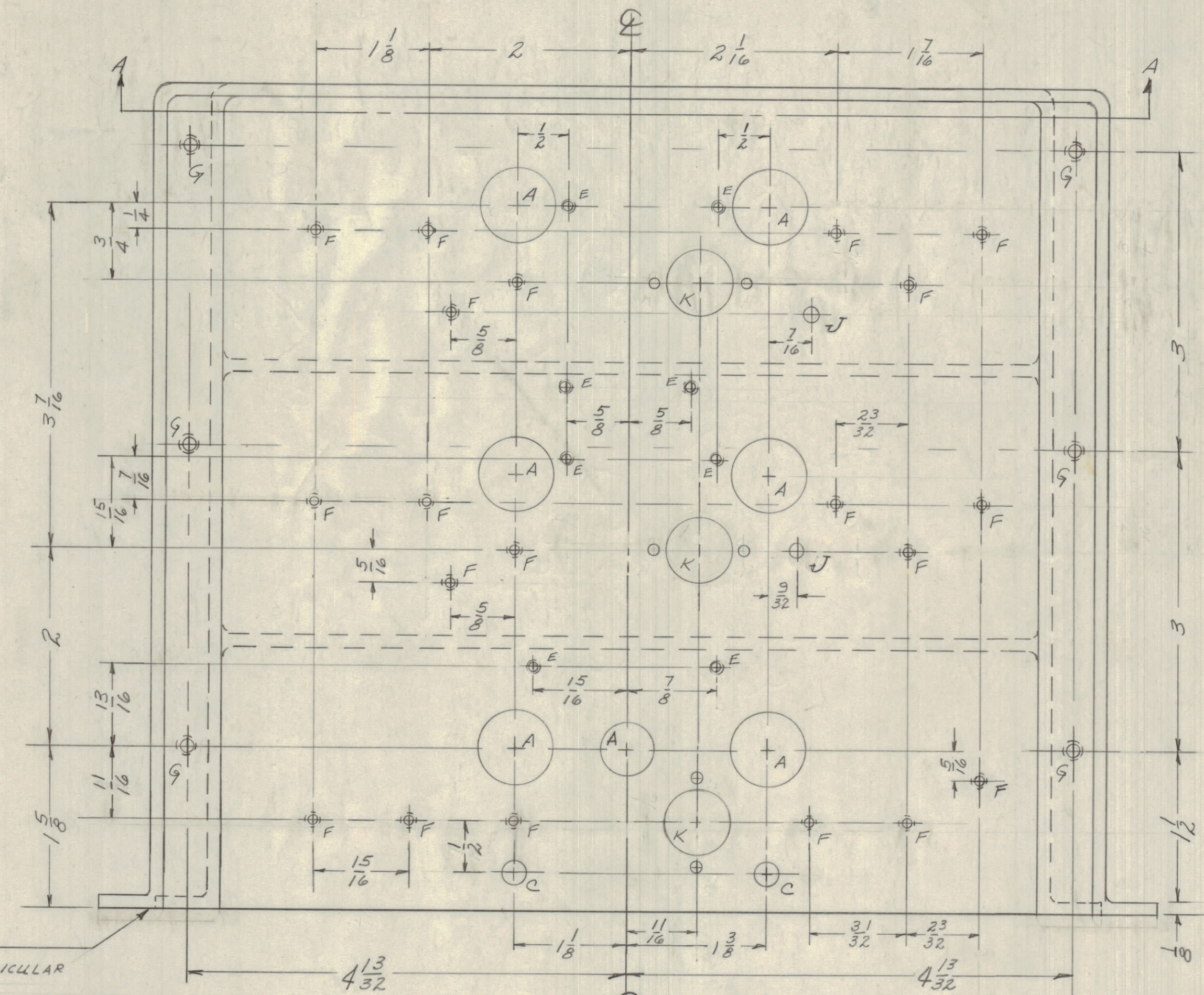


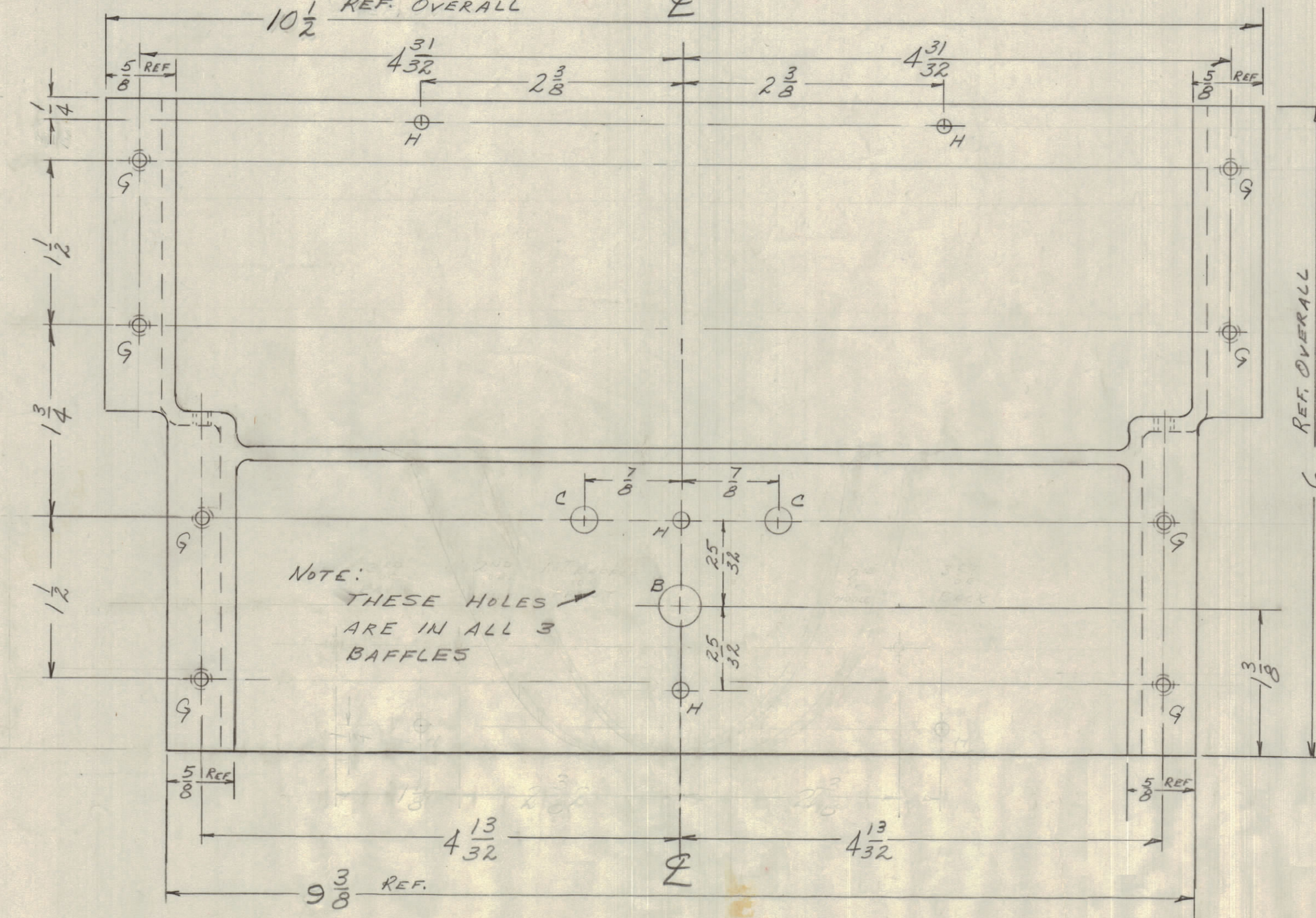
IF IT IS FOUND DESIRABLE TO CHANGE ANY TOLERANCE OR OTHER DETAIL SPECIFIED ON THIS DRAWING NOTIFY THE PURCHASER PROMPTLY.
 MAXIMUM ALLOWABLE TOLERANCES HAVE BEEN DETERMINED AND DEVIATIONS WILL BE CAUSE FOR REJECTION. REMOVE ALL BURRS AND SHARP EDGES



FINISH SURFACE MUST BE TRUE & FLAT WITHIN 0.5° OF PERPENDICULAR TO THIS SURFACE

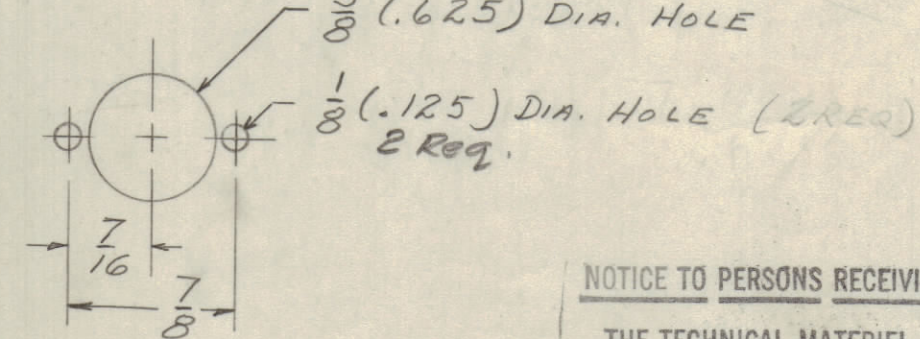


SECTION A-A FULL SIZE



NOTE: THESE HOLES ARE IN ALL 3 BAFFLES

- HOLE LEGEND**
- A - Existing Holes on Casting - 16 REQ.
 - B - 3/8 (.375) DIA. HOLE - 3 REQ.
 - C - 1/4 (.250) DIA. HOLE - 9 REQ.
 - D - 5/16 (.312) DIA. HOLE - 2 REQ.
 - E - DRILL 3/8 TAP FOR 4-40 SCREW - 8 REQ.
 - F - DRILL 1/2 TAP FOR 6-32 SCREW - 23 REQ.
 - G - DRILL 3/4 TAP FOR 8-32 SCREW - 14 REQ.
 - H - 1/8 (.125) DIA. HOLE - 18 REQ.
 - J - 9/64 (.141) DIA. HOLE - 2 REQ.
 - K - 3 REQ.



OBsolete (SEE PM-696)

NOTICE TO PERSONS RECEIVING THIS DRAWING
 THE TECHNICAL MATERIEL CORPORATION claims proprietary right in the material disclosed hereon. This drawing is issued in confidence for engineering information only and may not be reproduced or used to manufacture anything shown hereon without permission from THE TECHNICAL MATERIEL CORPORATION to the user. This drawing is loaned for mutual assistance and is subject to recall at any time.
 Property of:
 THE TECHNICAL MATERIEL CORPORATION
 MAMARONECK, NEW YORK.

REF: TMC # CS-122 (CASTING)

ISSUE	ITEM	CHANGED FROM	DATE	CN. NO.	DRAFTS	CHECKER	ENG. APP.
A	1	Obsolete Note added	10-23-58	5746	W	RPP	
TOLERANCES		SCALE: FULL SIZE					
ALL	DEC. DIM.	DRILL, PUNCH, COMMERCIAL STOCK					
OTHERS	FRAC. DIM. ± 1/4	SIZES AND MANUFACTURERS					
	ANGULAR DIM. ± 0.5°	TOLERANCES ARE NOT INCLUDED.					

1	GPR	PROJECT NO.	ASSY. NO.	7-25-58
REQ PER UNIT	MODEL	PROJECT NO.	ASSY. NO.	DATE
USED ON				

REQ. ITEM	PART NO.	DESCRIPTION	SYMBOL
CP		THE TECHNICAL MATERIEL CORP. MAMARONECK, NEW YORK	
STOCK SIZE			
CP		MACHINING, R.F. SECTION	
MATERIAL	WEIGHT PER PC.	CASTING	
CP			
TYPE & TEMPER			
CP			
HEAT TREAT SPEC.	16/125/58		
CP			
FINISH & SPEC. NO.			PM-495 A

PM-495 A