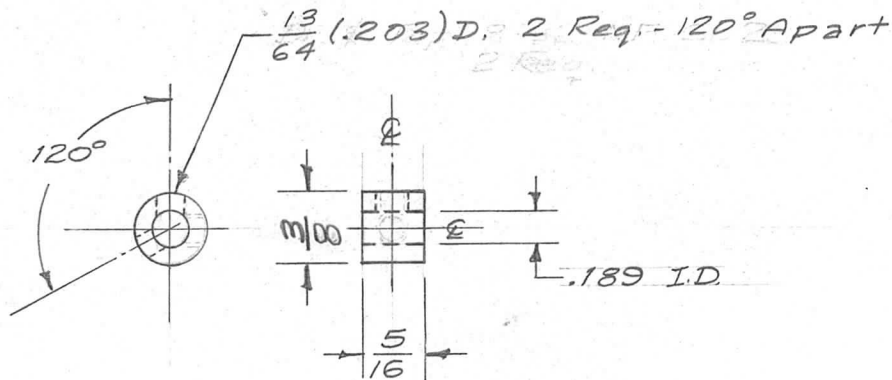


REQ. PER UNIT	USED ON			PM-478	A
	MODEL	ASS'Y. NO.	DATE		
1	ATS-50TU		1-28-58		
1	ATS-70TU		1-28-58		
1	ATS-50(70)TU-2		6-8-59		



ISSUE	ITEM	CHANGED FROM	DATE	CH. NO.	DRAFTS	CHECKER	ENG. APP.	REQ. ITEM	PART NO.	DESCRIPTION	SYMBOL	
								3/8 OD.		THE TECHNICAL MATERIEL CORP.		
								STOCK SIZE		MAMARONECK, NEW YORK		
A	1	120° WAS 90° 13/64 HOLES WERE 8-32 TAP	3/8/58	1	16	AND	AST	BRASS		BUSHING, COUPLING		
TOLERANCES								MATERIAL				
SCALE: FULL								FREE TURNING		16/28/58	AND	OHIO AST
DEC. DIM. ±								TYPE & TEMPER	HEAT TREAT. SPEC.	DRAWN	CHECKED	FINAL APPROVAL
FRAC. DIM. ± 1/64								NATURAL		26R	SP4	PM-478 A
ANGULAR DIM. ±								FINISH & SPEC. NO.		ELEC. DES. APP.	MECH. DES. APP.	
MAXIMUM ALLOWABLE TOLERANCES HAVE BEEN DETERMINED AND ANY DEVIATIONS WILL BE CAUSE FOR REJECTION.												
REMOVE ALL BURRS AND SHARP EDGES												