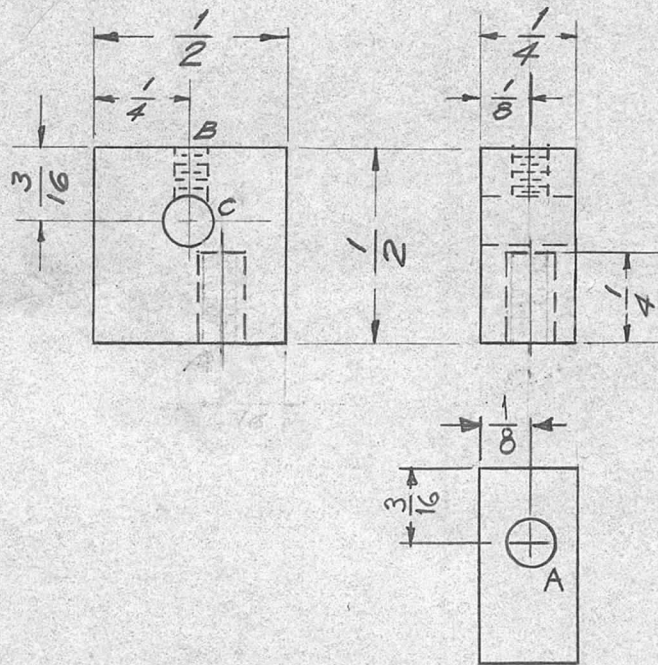


REQ. PER UNIT	USED ON			PM-463	C
	MODEL	ASS'Y. NO.	DATE		
1	GPR-90-RX	A-1480	8-28-57		



### LEGEND

- A. .126 DIA. (PRESS FIT FOR PN-112) 1 REQ.
- B. DRILL & TAP 4-40 CLASS 2 1 REQ.  
(AFTER PLATING)
- C #30 DR. (.128) 1 REQ.

ISSUE	ITEM	CHANGED FROM	DATE	CH. NO.	DRAFTS	CHECKER	ENG. APP.	REQ. ITEM	PART NO.	DESCRIPTION	SYMBOL			
C	2	Added Bottom View For Clarity	6-20-61	5102	W.G.F.	J.C.B.	ETM			THE TECHNICAL MATERIEL CORP. MAMARONECK, NEW YORK	C			
B	1	Added Press Fit Note To "A" Hole DELETED FINISH (S-105 CADMIUM PLATE)	1-24-61	3961	P	J.C.B.	<del>ETM</del>							
A		"B" WAS 2 REQ. "C" ADDED "A" HOLE WAS .125	10/29/67	1	16	W.G.F.	W.M.O.							
TOLERANCES								SCALE: DO NOT SCALE		SWITCH, LINKAGE ARM				
DEC. DIM. $\pm$								MAXIMUM ALLOWABLE TOLERANCES HAVE BEEN DETERMINED AND ANY DEVIATIONS WILL BE CAUSE FOR REJECTION.		GPR 90 RX				
FRAC. DIM. $\pm$ $\frac{1}{64}$								REMOVE ALL BURRS AND SHARP EDGES		FREE TURNING		Sec. 8-28-57	J.A.Q.	W.M.O. ATT
ANGULAR DIM. $\pm$								TYPE & TEMPER		HEAT TREAT. SPEC.		DRAWN	CHECKED	FINAL APPROVAL
								FINISH & SPEC. NO.		ELEC. DES. APP.		MECH. DES. APP.		
												PIM-463 C		