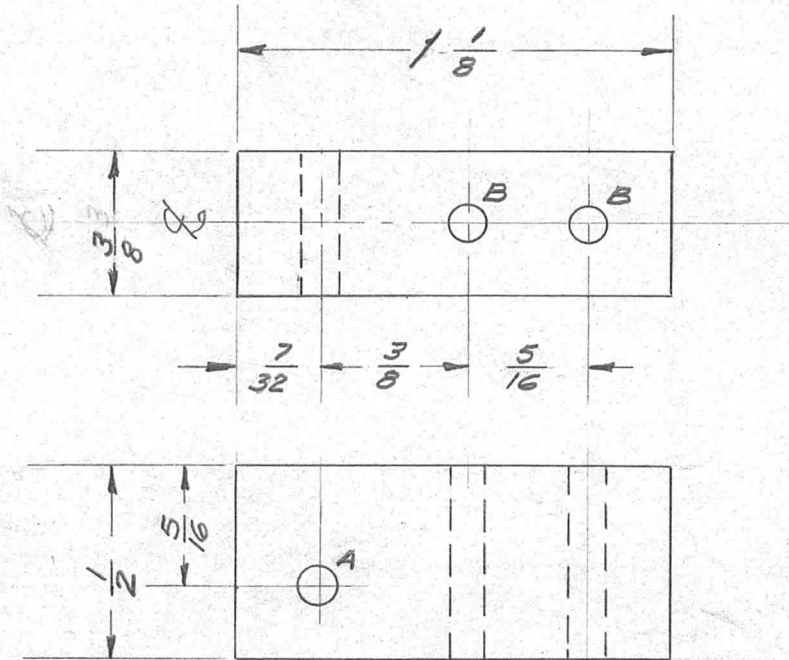


REQ. PER UNIT	USED ON			PM-462	D
	MODEL	ASS'Y. NO.	DATE		
1	GPR 90 RX		8-22-57		



LEGEND
A - $\frac{.138}{.133}$ D. 1 REQ.
B - $\frac{3}{16}$ (.1875) 2 REQ.

ISSUE	ITEM	CHANGED FROM	DATE	CH. NO.	DRAFTS	CHECKER	ENG. APP.	REQ. ITEM	PART NO.	DESCRIPTION	SYMBOL						
D		"A" HOLE WAS .128D	6.20.66	16429	WTH	JCB	JCB										
C	1	FINISH WAS S101 & S107	8-14-63	9762	AR.	JAB	W		3/8 X 1/2 BAR	THE TECHNICAL MATERIEL CORP. MAMARONECK, NEW YORK							
B	1	"A" Hole was .1265 D "B" Hole was 1/8 D	10/25/57	2	HQ	K	W		STOCK SIZE	SHAFT, SUPPORT							
A	1	"B" Holes Were 3/32	9-26-57	1	E.	HQ	W		ALUMINUM	GPR 90 RX							
TOLERANCES								MATERIAL									
SCALE:								5052-432									
DEC. DIM. ±								TYPE & TEMPER		HEAT TREAT. SPEC.		DRAWN		CHECKED		FINAL APPROVAL	
FRAC. DIM. ± 1/64								S404 YELLOW IRIDITE				P.L.K.				PM-462 D	
ANGULAR DIM. ±								FINISH & SPEC. NO.		ELEC. DES. APP.		MECH. DES. APP.					