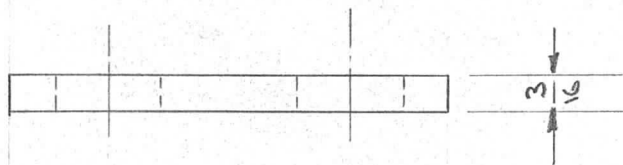
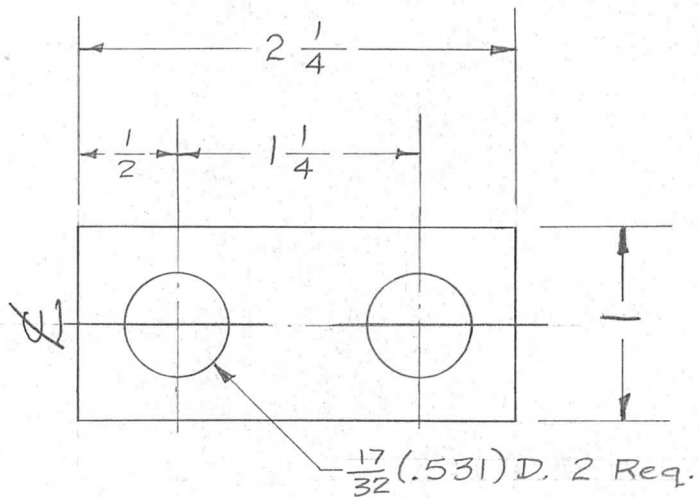


REQ. PER UNIT	USED ON			PM-431	A
	MODEL	ASS'Y. NO.	DATE		
2	TER-5000	A-1431(8)	3-21-57		



Finish - S-245 Silver Plate .0005
S-423 Iridite

ISSUE	ITEM	CHANGED FROM	DATE	CH. NO.	DRAFTS	CHECKER	ENG. APP.	REQ. ITEM	PART NO.	DESCRIPTION	SYMBOL	
								3/16 THK. X 1		THE TECHNICAL MATERIEL CORP. MAMARONECK, NEW YORK		
								STOCK SIZE				
A	1	Finish added	6/19/57		J.C.B.	<i>JCB</i>	<i>ah</i>	BRASS		CONNECTOR, COIL		
								MATERIAL		(TER-5000)		
TOLERANCES			SCALE: #					HALF HARD	#	16 3-21-57	<i>JCB</i>	<i>ah</i>
DEC. DIM. ± .001			MAXIMUM ALLOWABLE TOLERANCES HAVE BEEN DETERMINED AND ANY DEVIATIONS WILL BE CAUSE FOR REJECTION. REMOVE ALL BURRS AND SHARP EDGES					TYPE & TEMPER	HEAT TREAT. SPEC.	DRAWN	CHECKED	FINAL APPROVAL
FRAC. DIM. ± 1/64								FINISH & SPEC. NO.				
ANGULAR DIM. ±											PM-431	A