

IF IT IS FOUND DESIRABLE TO CHANGE ANY TOLERANCE OR OTHER DETAIL SPECIFIED ON THIS DRAWING NOTIFY THE PURCHASER PROMPTLY.

MAXIMUM ALLOWABLE TOLERANCES HAVE BEEN DETERMINED AND DEVIATIONS WILL BE CAUSE FOR REJECTION. REMOVE ALL BURRS AND SHARP EDGES

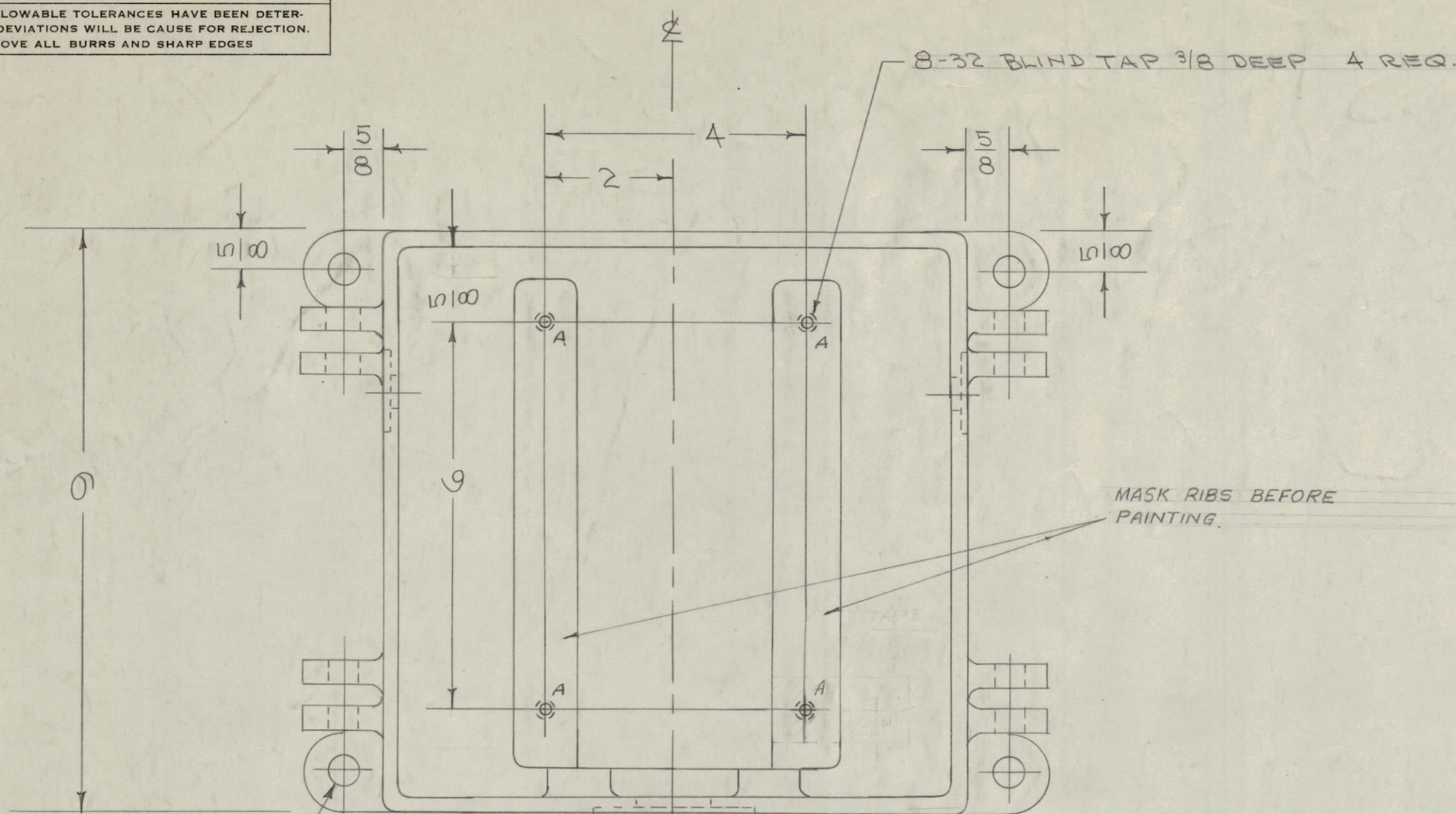
NOTICE TO PERSONS RECEIVING THIS DRAWING

THE TECHNICAL MATERIEL CORPORATION claims proprietary right in the material disclosed herein. This drawing is issued in confidence for engineering information only and may not be reproduced or used to manufacture anything shown herein without permission from THE TECHNICAL MATERIEL CORPORATION to the user. This drawing is loaned for mutual assistance and is subject to recall at any time.

Property of:

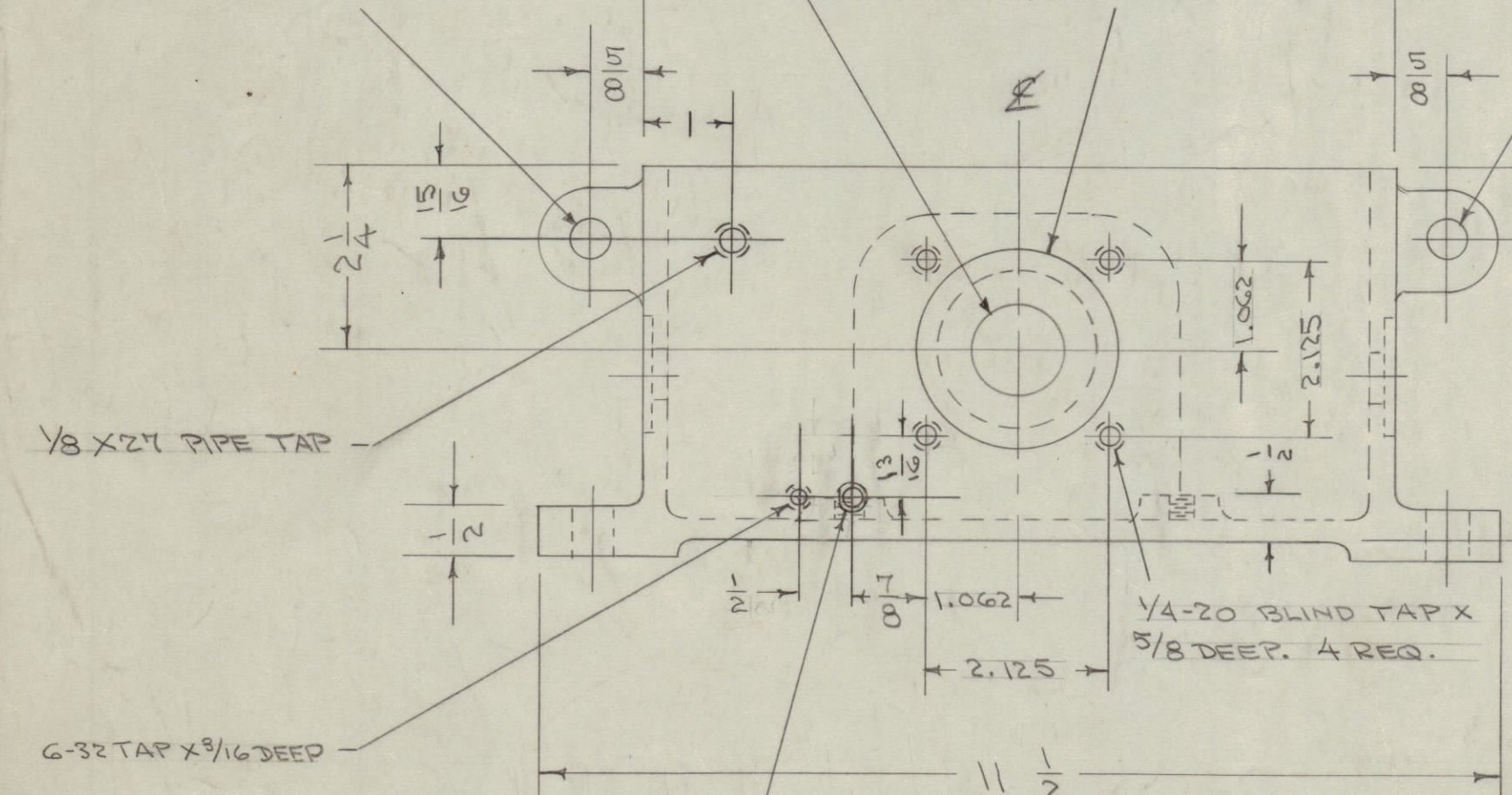
THE TECHNICAL MATERIEL CORPORATION
MAMARONECK, NEW YORK

- OBSOLETE -
SEE SEET 2



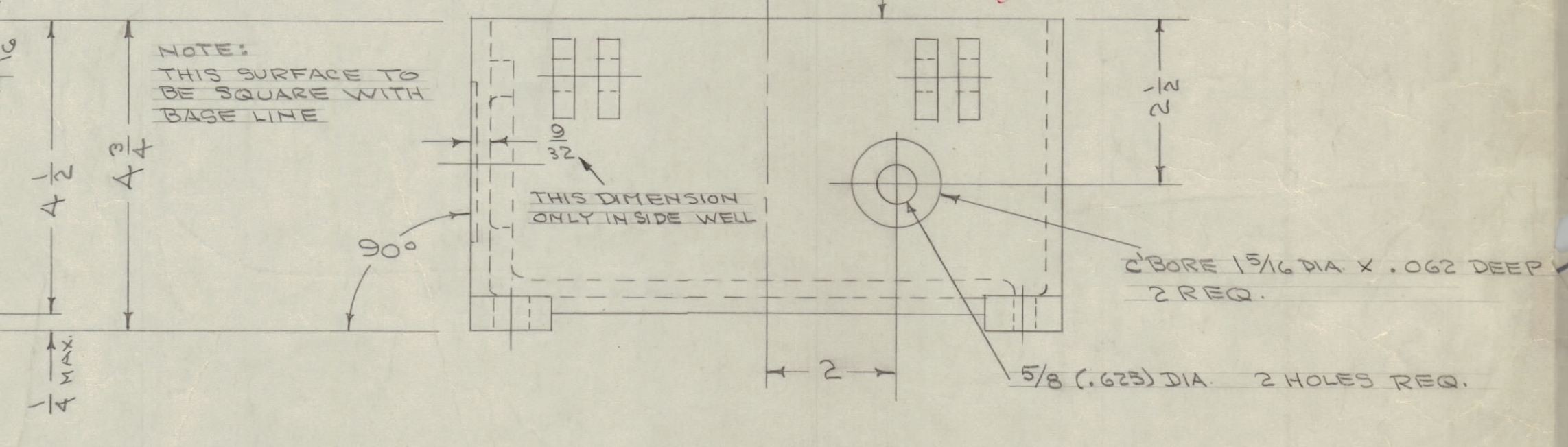
ANCHOR HOLES $33/64(.515)$ D.
4 HOLES REQ.

COVER HINGE HOLES $33/64(.515)$ D.
4 HOLES REQ.



DRILL & TAP 10-32 X $3/8$ DEEP 1, REQ.
 $1/2$ C/BORE SLIGHTLY TO REMOVE PAINT.

COVER BOLT HOLES $33/64(.515)$ D.
4 HOLES REQ.



NOTE:
S-404 YEL - IRIDITE
S-114 ZINC CHROMATE PRIMER
S-115 SMOOTH GRAY ENAMEL

REF: CASTING DWG. CS-101

ISSUE	ITEM	CHANGED FROM	DATE	CN. NO.	DRAFTS	CHECKER	ENG. APP.
D	1	NOTE OBSOLETE SEE SH2	7.10.91		G.D.L.		
C	1	1.625 Dia Was 1.133 Dia	12-26-61	6090	E.L.		
B	1	S404-IRIDITE WAS S101-CAUSTIC DIP	1-9-59	1001	P		EMN
A	2	1/8-21 PIPE TAP HOLE ADDED	10/14/60	1	CSG	HAZE	
A	1	6-32 TAP HOLE ADDED					

TOLERANCES: DEC. DIM. $\pm .005$, FRAC. DIM. $\pm 1/64$, ANGULAR DIM. \pm

SCALE: DRILL, PUNCH, COMMERCIAL STOCK SIZES AND MANUFACTURERS TOLERANCES ARE NOT INCLUDED.

REP PER UNIT	MODEL	PROJECT NO.	ASS'Y. NO.	DATE
1	TRC-500	437		1-18-56

REQ. ITEM	PART NO.	DESCRIPTION	SYMBOL
	CS-101	THE TECHNICAL MATERIEL CORP.	
		MAMARONECK, NEW YORK	
	ALUMINUM	CASE, MACHINING	
	356-T6	TRC-500	
	STRESS RELIEVED	CDP. 1-18-56	QB
	HEAT TREAT. SPEC.	DRAWN	MECH. DES. APP.
	SEE NOTE	CHECKED	FINAL APPROVAL
			PM-392 D

