

IF IT IS FOUND DESIRABLE TO CHANGE ANY TOLERANCE OR OTHER DETAIL SPECIFIED ON THIS DRAWING NOTIFY THE PURCHASER PROMPTLY.

MAXIMUM ALLOWABLE TOLERANCES HAVE BEEN DETERMINED AND DEVIATIONS WILL BE CAUSE FOR REJECTION. REMOVE ALL BURRS AND SHARP EDGES

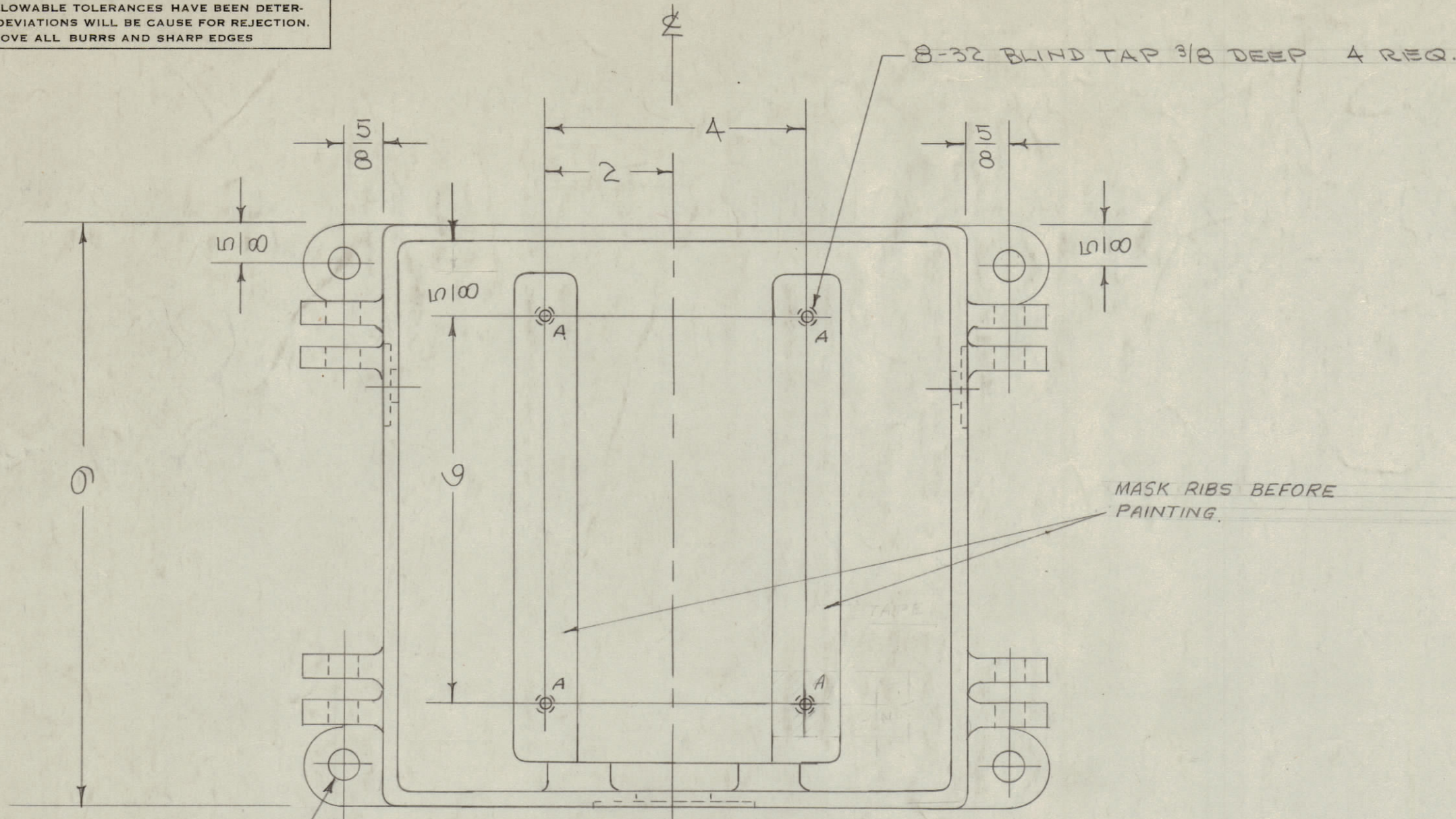
NOTICE TO PERSONS RECEIVING THIS DRAWING

THE TECHNICAL MATERIEL CORPORATION claims proprietary right in the material disclosed herein. This drawing is issued in confidence for engineering information only and may not be reproduced or used to manufacture anything shown herein without permission from THE TECHNICAL MATERIEL CORPORATION to the user. This drawing is loaned for mutual assistance and is subject to recall at any time.

Property of:

THE TECHNICAL MATERIEL CORPORATION  
MAMARONECK, NEW YORK

**- OBSOLETE -**  
**SEE SEET 2**



MASK RIBS BEFORE PAINTING.

ANCHOR HOLES  $33/64(.515)$  D.  
4 HOLES REQ.

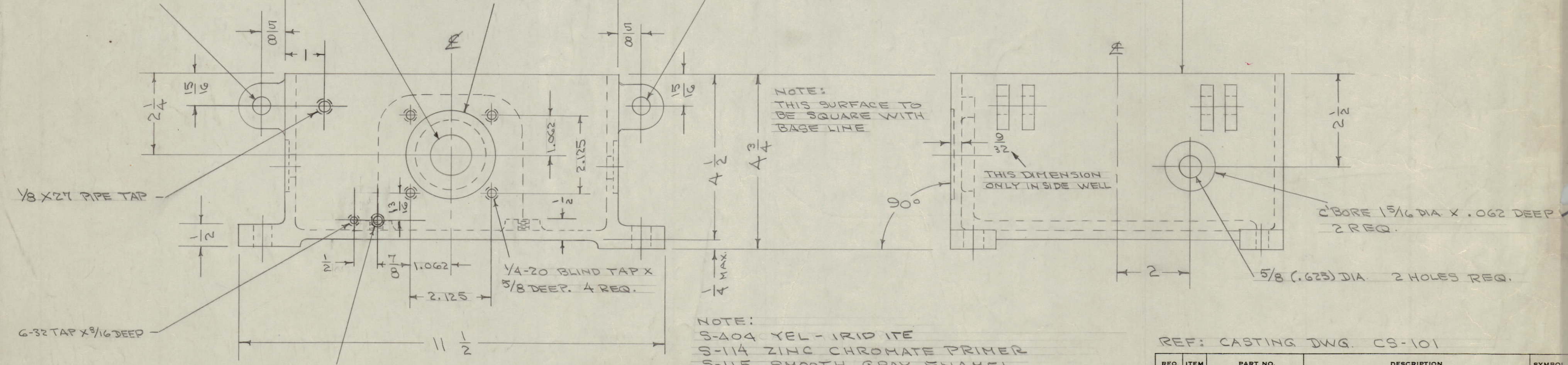
COVER HINGE HOLES  $33/64(.515)$  D.  
4 HOLES REQ.

$\pm .005$   
1.625 DIA

$\pm .010$   
C BORE 2.500 DIA. X  
.156 DEEP. DEPTH OF  
C BORE TO BE PARALLEL  
WITH OUTSIDE FACE

COVER BOLT HOLES  $33/64(.515)$  D.  
4 HOLES REQ.

TOP SURFACE MACHINED SMOOTH



NOTE:  
THIS SURFACE TO  
BE SQUARE WITH  
BASE LINE

THIS DIMENSION  
ONLY INSIDE WELL

C BORE  $1 5/16$  DIA. X .062 DEEP  
2 REQ.

$5/8 (.625)$  DIA. 2 HOLES REQ.

$1/8 \times 27$  PIPE TAP

$1/4-20$  BLIND TAP X  
 $5/8$  DEEP. 4 REQ.

6-32 TAP X  $3/16$  DEEP

NOTE:  
S-404 YEL - IRIDITE  
S-114 ZINC CHROMATE PRIMER  
S-115 SMOOTH GRAY ENAMEL

DRILL & TAP 10-32 X  $3/8$  DEEP 1, REQ.  
 $1/2$  C BORE SLIGHTLY TO REMOVE PAINT.

REF: CASTING DWG. CS-101

D	NOTE OBSOLETE SEE SH2	7.10.91		G-DL			
C	1.625 Dia Was 1.133 Dia. $\pm .005$	12-26-61	6090	E.L.			
B	1 S404-IRIDITE WAS	1-9	1001	P		EMN	
	2 S101-CAUSTIC DIP						
A	1 $1/8-27$ PIPE TAP HOLE ADDED	10/16		CSG	HLG		
	1 6-32 TAP HOLE ADDED						
ISSUE	ITEM	CHANGED FROM	DATE	CN. NO.	DRAFTS	CHECKER	ENG. APP.
TOLERANCES		SCALE:					
ALL OTHERS	DEC. DIM. $\pm .005$ FRAC. DIM. $\pm 1/64$ ANGULAR DIM. $\pm$	DRILL, PUNCH, COMMERCIAL STOCK SIZES AND MANUFACTURERS TOLERANCES ARE NOT INCLUDED.					

1	TRC-500	437		1-18-56
REP PERD UNIT	MODEL	PROJECT NO.	ASS'Y. NO.	DATE

REQ.	ITEM	PART NO.	DESCRIPTION	SYMBOL
		CS-101	THE TECHNICAL MATERIEL CORP. MAMARONECK, NEW YORK	
		ALUMINUM	CASE, MACHINING	
		356-T6	TRC-500	
		STRESS RELIEVED	CDP. 1-18-56	QB
		HEAT TREAT. SPEC.	DRAWN	MECH. DES. APP.
		SEE NOTE	CHECKED	FINAL APPROVAL
				PM-392 D