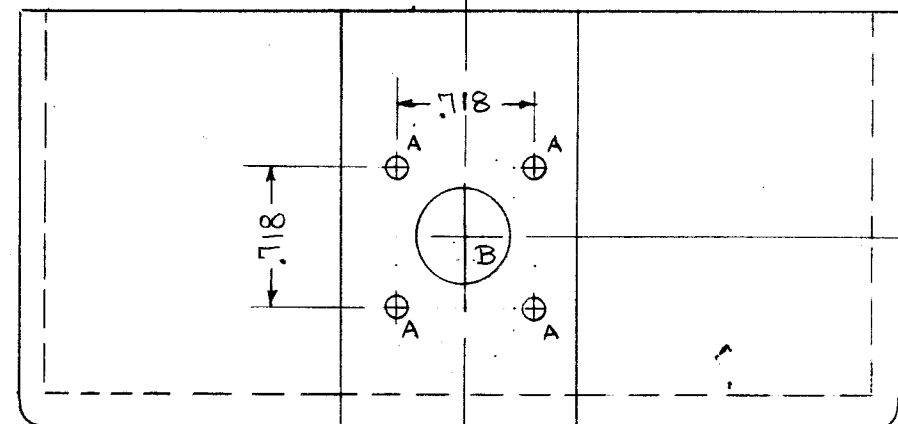
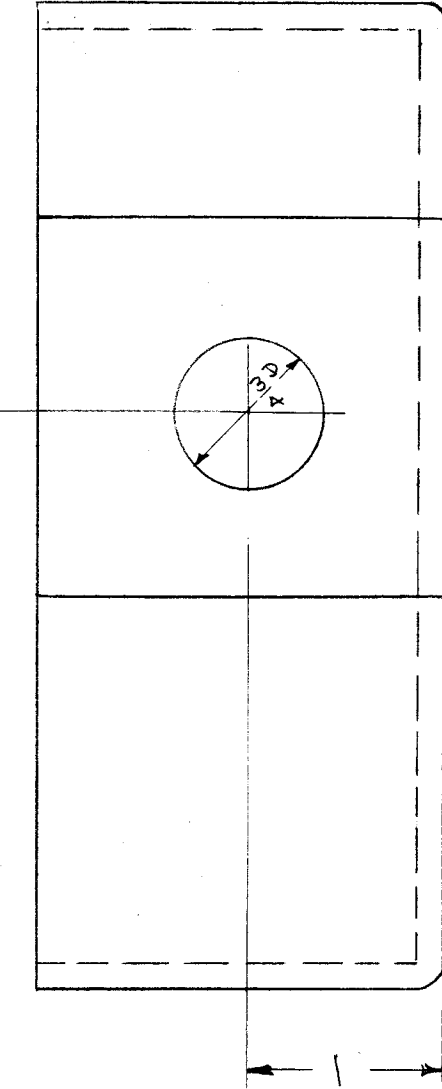
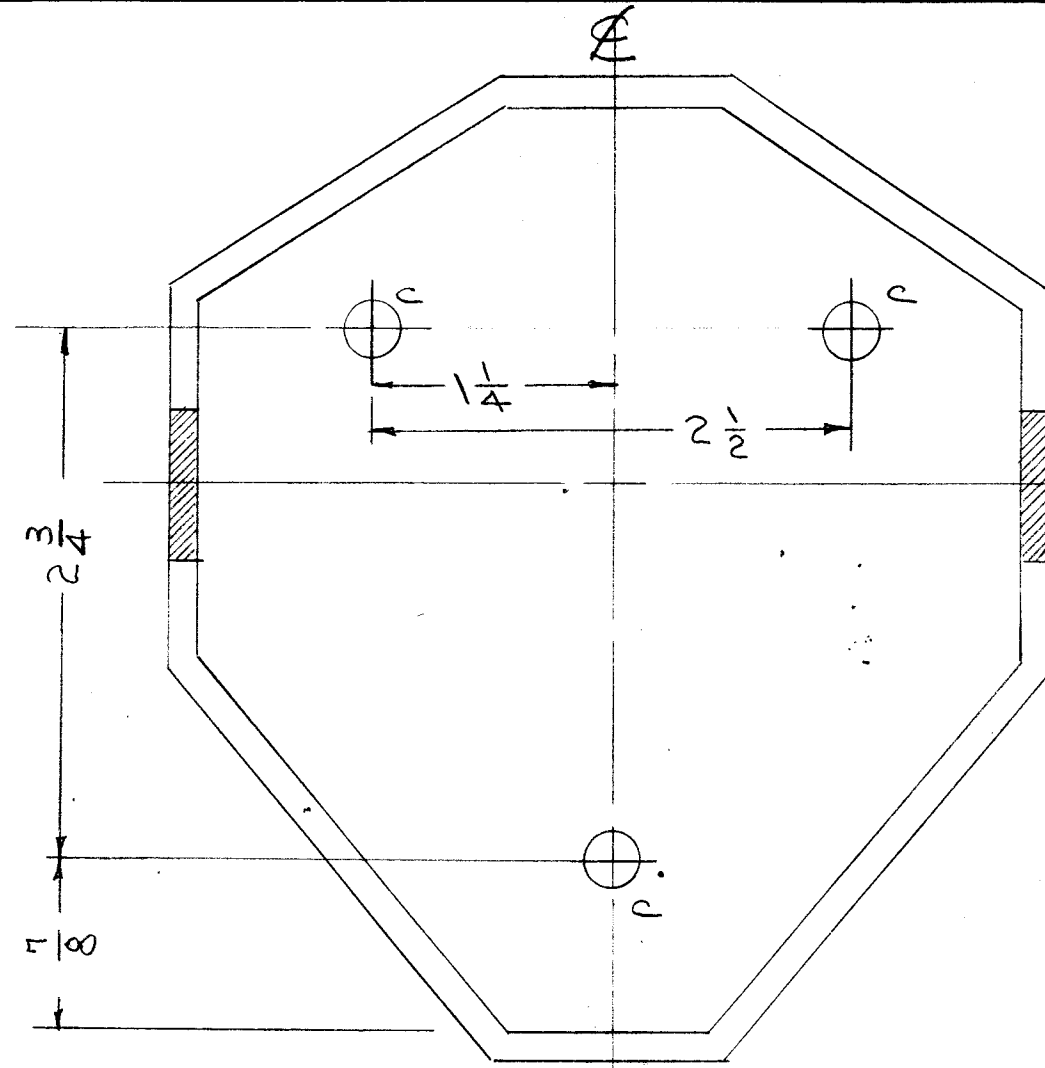
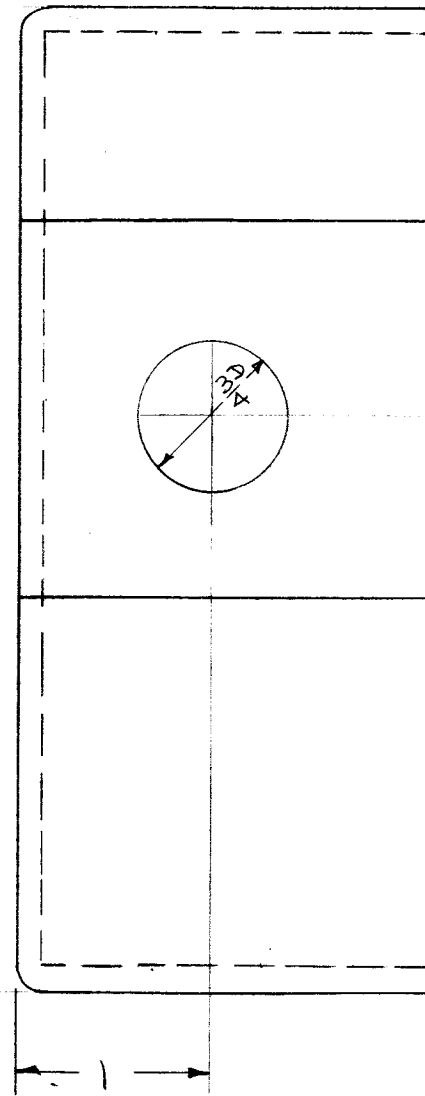


PM-390 B



LEGEND:

- A = 1/8 (.125) D
- B = 1/2 (.500) D
- C = 9/32 (.281) D

- 4 HOLES
- 1 HOLE
- 3 HOLES

REF: TMC DWG FP-117

ISSUE	ITEM	CHANGED FROM	DATE	CH. NO.	DRAFTS	CHECKER	ENG. APP.
B		ON BOTTOM VIEW DIM. 13/16 WAS 1"	5-9-89		GDL		
A	1	5756 WAS S115	12/16/65	15364	HVV	JCB	

TOLERANCES: DEC. DIM. ±, FRAC. DIM. ±, ANGULAR DIM. ±

SCALE: MAXIMUM ALLOWABLE TOLERANCES HAVE BEEN DETERMINED AND ANY DEVIATIONS WILL BE CAUSE FOR REJECTION. REMOVE ALL BURRS AND SHARP EDGES

1	DAC-8			1/17/56
REQ. PER UNIT	MODEL	PROJECT NO.	ASS'Y. NO.	DATE
USED ON				

REQ. ITEM	PART NO.	DESCRIPTION	SYMBOL
THE TECHNICAL MATERIEL CORP.			
MAMARONECK, NEW YORK			
CASE, MACHINING			
DAC-8			
TYPE & TEMPER		HEAT TREAT. SPEC.	DRAWN
SMOOTH GRAY ENAMEL			CHECKED
FINISH & SPEC. NO.		ELEC. DES. APP.	MECH. DES. APP.
			FINAL APPROVAL
			PM-390 B

NOTICE TO PERSONS RECEIVING THIS DRAWING
 THE TECHNICAL MATERIEL CORPORATION claims proprietary right in the material disclosed hereon. This drawing is issued in confidence for engineering information only and may not be reproduced or used to manufacture anything shown herein without permission from THE TECHNICAL MATERIEL CORPORATION to the user. This drawing is loaned for mutual assistance and is subject to recall at any time.

Property of:
 THE TECHNICAL MATERIEL CORPORATION
 MAMARONECK, NEW YORK