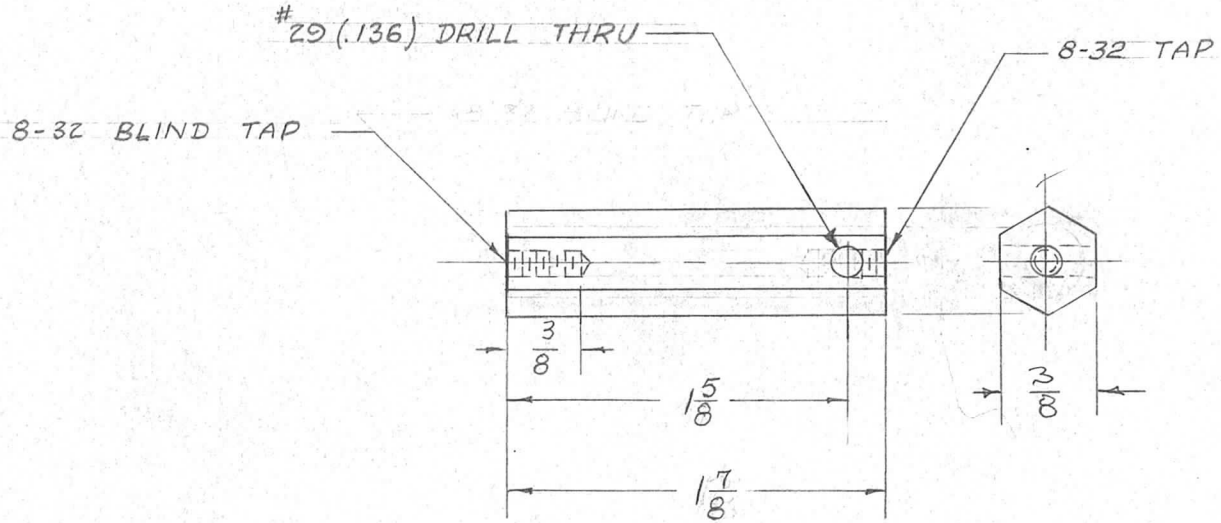


REQ. PER UNIT	USED ON		
	MODEL	ASS'Y. NO.	DATE
2	TER-3500		12/2/55
2	TER-500		2/29/57

PM-380 C



ISSUE	ITEM	CHANGED FROM	DATE	CH. NO.	DRAFTS	CHECKER	ENG. APP.	REQ. ITEM	PART NO.	DESCRIPTION	SYMBOL
C		FINISH WAS S105 CAD PL.	3-4-66	15885	SC	AMB	AMB			THE TECHNICAL MATERIEL CORP. MAMARONECK, NEW YORK	C
B	1	8-32 TAP WAS 6-32	2-21-57	1	SC	AMB	AMB		3/8 D. HEX ROD STOCK SIZE		
A	2	1 5/8 WAS 1 3/4	12-22-55	1	MB	AMB	AMB		BRASS		
	1	1 7/8 WAS 2							MATERIAL	POST	
										TER-3500	
TOLERANCES			SCALE:			FREE TURNING		MB 12-2-55	AMB	AMB	
DEC. DIM. ±			MAXIMUM ALLOWABLE TOLERANCES HAVE BEEN DETERMINED AND ANY DEVIATIONS WILL BE CAUSE FOR REJECTION.			TYPE & TEMPER		HEAT TREAT. SPEC.	DRAWN	CHECKED	FINAL APPROVAL
FRAC. DIM. ± Y64			REMOVE ALL BURRS AND SHARP EDGES			S135 NICKEL PL. - BRIGHT					
ANGULAR DIM. ±						FINISH & SPEC. NO.		ELEC. DES. APP.	MECH. DES. APP.	PM-380	C