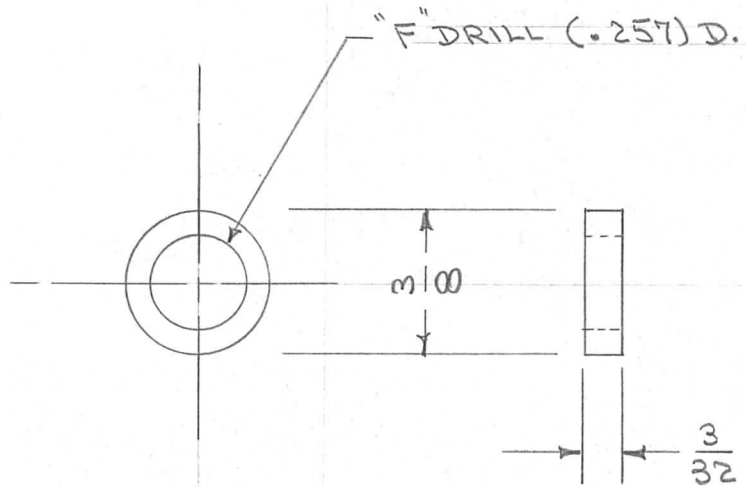


IF IT IS FOUND DESIRABLE TO CHANGE ANY TOLERANCE OR OTHER DETAIL SPECIFIED ON THIS DRAWING NOTIFY THE PURCHASER PROMPTLY.

PM-321

MAXIMUM ALLOWABLE TOLERANCES HAVE BEEN DETERMINED AND DEVIATIONS WILL BE CAUSE FOR REJECTION. REMOVE ALL BURRS AND SHARP EDGES

REQ. PER UNIT	USED ON			
	MODEL	PROJECT NO.	ASS'Y. NO.	DATE
1	PM0-1	285		10-5-54
1	PM0-2	285		10-5-54
1	RTF			2-1-56
1	RTF-2	F/P		11-20-58
2	CMD-1			2/24/61



DIM. SHOWN ARE AFTER PLATING

REQ.	ITEM	PART NO.	DESCRIPTION	SYMBOL
		3/8 DIA.	THE TECHNICAL MATERIEL CORP. MAMARONECK. NEW YORK	
		STOCK SIZE		
		BRASS	SPACER, MAIN SHAFT (MAIN GEAR ASSY.)	
		#		
		MATERIAL	C.D.D. 10-5-54	
		WEIGHT PER PC.		
		FREE TURNING		
		TYPE & TEMPER		
		#		
		HEAT TREAT. SPEC.		
		S-105 CADMIUM PLATE .0003		
		FINISH & SPEC. NO.		

ISSUE	ITEM	CHANGED FROM	DATE	CN. NO.	DRAFTS	CHECKER	ENG. APP.
TOLERANCES			SCALE 11				
ALL OTHERS	DEC. DIM. ±	FRAC. DIM. ± 1/64	DRILL, PUNCH, COMMERCIAL STOCK SIZES AND MANUFACTURERS TOLERANCES ARE NOT INCLUDED.				
	ANGULAR DIM. ±						