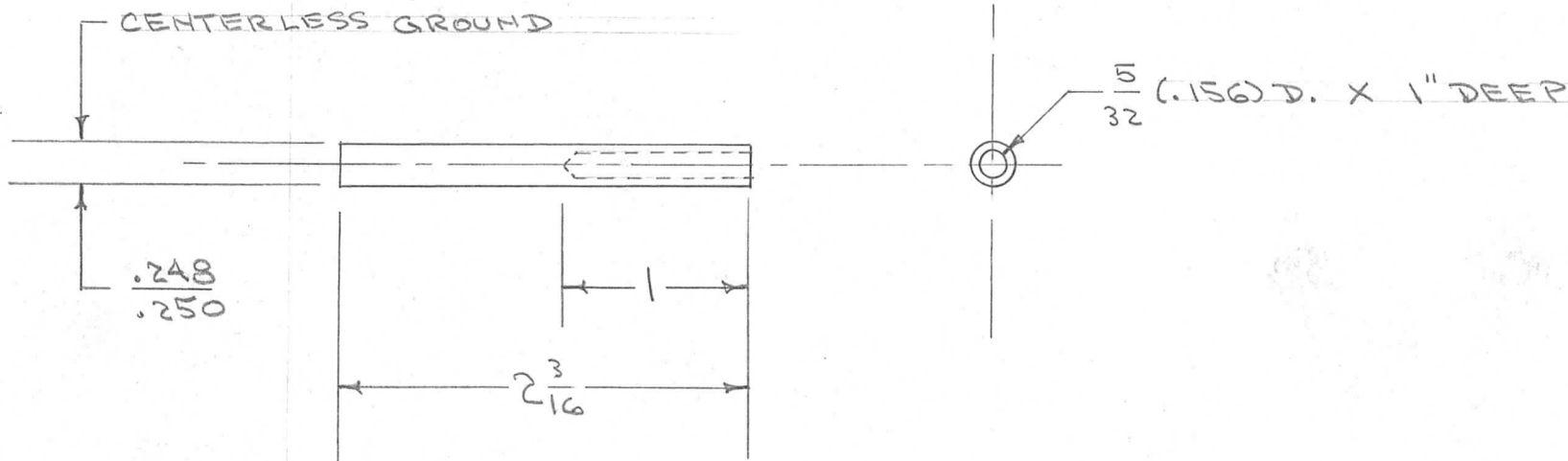


IF IT IS FOUND DESIRABLE TO CHANGE ANY TOLERANCE OR OTHER DETAIL SPECIFIED ON THIS DRAWING NOTIFY THE PURCHASER PROMPTLY.

PM-320 A

MAXIMUM ALLOWABLE TOLERANCES HAVE BEEN DETERMINED AND DEVIATIONS WILL BE CAUSE FOR REJECTION. REMOVE ALL BURRS AND SHARP EDGES

REQ. PER UNIT	USED ON			
	MODEL	PROJECT NO.	ASS'Y. NO.	DATE
1	PM0-1	285		9-20-54
1	PM0-2	285		9-20-54
1	RTF			2-1-56
1	RTF-2	M/O		11-10-58



REQ.	ITEM	PART NO.	DESCRIPTION	SYMBOL
		9/32 ROD.	THE TECHNICAL MATERIEL CORP.	
		STOCK SIZE	MAMARONECK. NEW YORK	
		ALUMINUM	COUPLING SHAFT, COIL	
		MATERIAL	SLUG P (OSC. ASSY.)	
		2020-T14		
		TYPE & TEMPER		
		H		
		HEAT TREAT. SPEC.		
		S-101 CAUSTIC DIP		
		S-107 LACQUER		
		FINISH & SPEC. NO.		

ISSUE	ITEM	CHANGED FROM	DATE	CN. NO.	DRAFTS	CHECKER	ENG. APP.
A	1	MAT. WAS YAD. BRASS	7/1/56	1	COO	JAL	WOL

TOLERANCES	SCALE
ALL OTHERS DEC. DIM. \pm FRAC. DIM. \pm $\frac{1}{64}$ ANGULAR DIM. \pm	DRILL, PUNCH, COMMERCIAL STOCK SIZES AND MANUFACTURERS TOLERANCES ARE NOT INCLUDED.

DRAWN	ELEC. DES. APP.	MECH. DES. APP.
JAL		WOL
CHECKED	FINAL APPROVAL	
	PM-320 A	