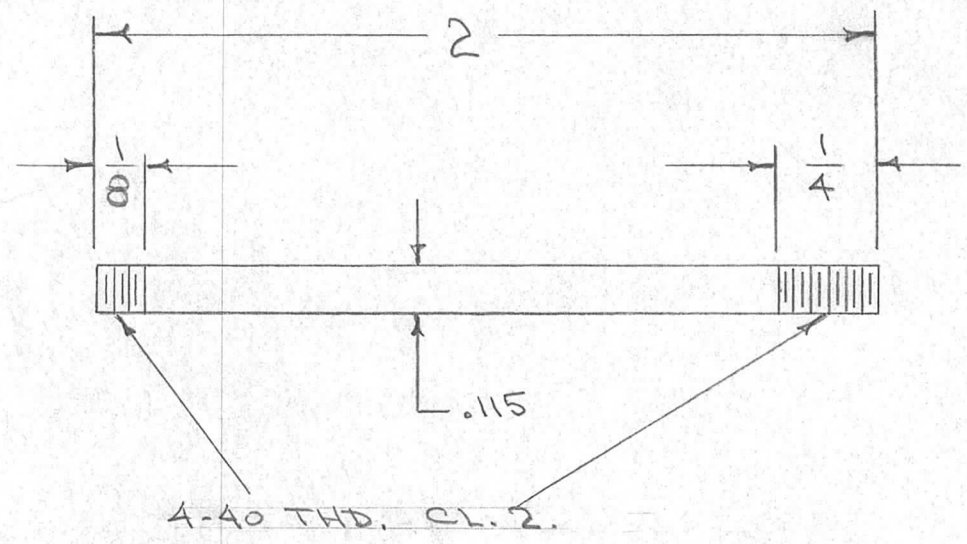


IF IT IS FOUND DESIRABLE TO CHANGE ANY TOLERANCE OR OTHER DETAIL SPECIFIED ON THIS DRAWING NOTIFY THE PURCHASER PROMPTLY.

PM-312 B

MAXIMUM ALLOWABLE TOLERANCES HAVE BEEN DETERMINED AND DEVIATIONS WILL BE CAUSE FOR REJECTION. REMOVE ALL BURRS AND SHARP EDGES

REQ. PER UNIT	USED ON			
	MODEL	PROJECT NO.	ASS'Y. NO.	DATE
1	PMO-1	285		1-25-55
1	PMO-2	285		"
1	VOX-1	291		"
1	VOX-2	291		"
1	RTF			2-1-56
1	RTF-2	F/P		11-20-58



REQ.	ITEM	PART NO.	DESCRIPTION	SYMBOL
		#32 (.115)	THE TECHNICAL MATERIEL CORP.	
		STOCK SIZE	MAMARONECK. NEW YORK	
		STEEL	PIN, DIAL LOCK	
		MATERIAL	(MAIN GEAR ASSY.)	
		WEIGHT PER PC.		
		DRILL ROD		
		TYPE & TEMPER	CDD 1-25-55	
		HEAT TREAT. SPEC.		
		3-105 CAD. PLATE		
		.0002		
		FINISH & SPEC. NO.		

ISSUE	ITEM	CHANGED FROM	DATE	CN. NO.	DRAFTS	CHECKER	ENG. APP.
B	1	FINISH ADDED	9/20/56	2	CDD	JAW	WJ
A	1	WAS THREADED ROD	1/5/54	1	CDD	JAW	WJ

TOLERANCES		SCALE
ALL OTHERS	DEC. DIM. ± FRAC. DIM. ± 1/64 ANGULAR DIM. ±	DRILL, PUNCH, COMMERCIAL STOCK SIZES AND MANUFACTURERS TOLERANCES ARE NOT INCLUDED.

DRAWN	ELEC. DES. APP.	MECH. DES. APP.
JAW 1-25-55		WJ
CHECKED	FINAL APPROVAL	
	PM-312 B	