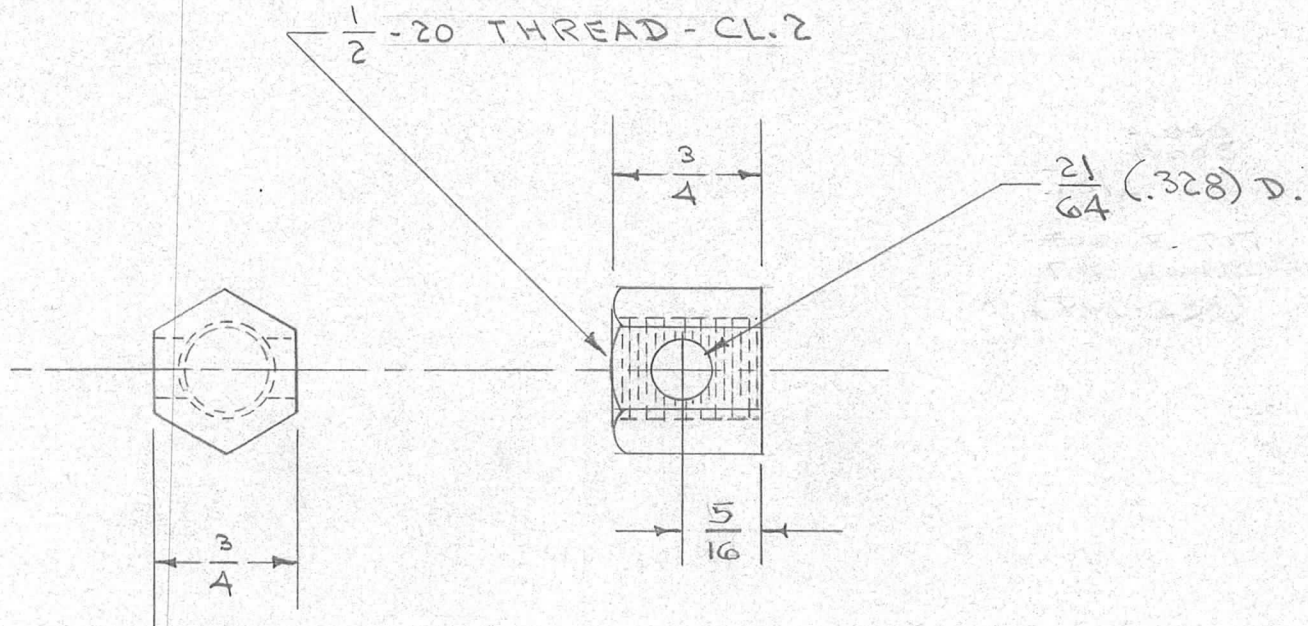


IF IT IS FOUND DESIRABLE TO CHANGE ANY TOLERANCE OR OTHER DETAIL SPECIFIED ON THIS DRAWING NOTIFY THE PURCHASER PROMPTLY.

PM-287

MAXIMUM ALLOWABLE TOLERANCES HAVE BEEN DETERMINED AND DEVIATIONS WILL BE CAUSE FOR REJECTION. REMOVE ALL BURRS AND SHARP EDGES

REQ PER UNIT	USED ON			
	MODEL	PROJECT NO.	ASS'Y. NO.	DATE
1	KS-85-X	J-227	A-501	4-27-54



REQ.	ITEM	PART NO.	DESCRIPTION	SYMBOL
	HEX. ROD		THE TECHNICAL MATERIEL CORP. MAMARONECK, NEW YORK	
	STOCK SIZE			
	BRASS		LOCK, HANDLE	
	MATERIAL	WEIGHT PER PC.		
	FREE TURNING			
	TYPE & TEMPER		C.D.D. 4-27-54	
			DRAWN	ELEC. DES. APP. MECH. DES. APP.
			HEAT TREAT. SPEC.	
			FINISH & SPEC. NO.	
			CHECKED	FINAL APPROVAL
				PM-287

ISSUE	ITEM	CHANGED FROM	DATE	CN. NO.	DRAFTS	CHECKER	ENG. APP.
TOLERANCES			SCALE $\frac{1}{1}$				
ALL OTHERS	DEC. DIM. $\pm$ FRAC. DIM. $\pm \frac{1}{32}$ ANGULAR DIM. $\pm$		DRILL, PUNCH, COMMERCIAL STOCK SIZES AND MANUFACTURERS TOLERANCES ARE NOT INCLUDED.				