

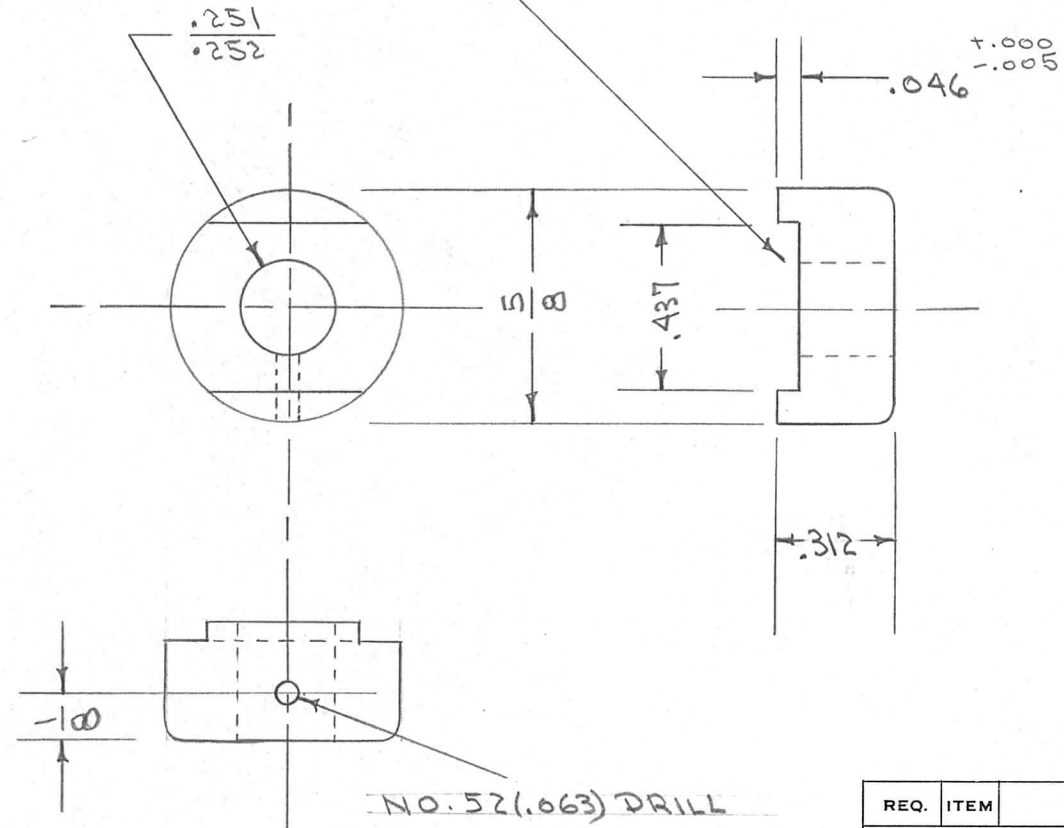
IF IT IS FOUND DESIRABLE TO CHANGE ANY TOLERANCE OR OTHER DETAIL SPECIFIED ON THIS DRAWING NOTIFY THE PURCHASER PROMPTLY.

PM-266

MAXIMUM ALLOWABLE TOLERANCES HAVE BEEN DETERMINED AND DEVIATIONS WILL BE CAUSE FOR REJECTION. REMOVE ALL BURRS AND SHARP EDGES

REQ. PER. UNIT	USED ON			
	MODEL	PROJECT NO.	ASS'Y. NO.	DATE
4	TAC-1	132	A-666 A-667	12-29-53

SLOT TO BE CONCENTRIC WITHIN $\pm .005$



REQ.	ITEM	PART NO.	DESCRIPTION	SYMBOL
		5/8 D	THE TECHNICAL MATERIEL CORP.	
		STOCK SIZE	MAMARONECK, NEW YORK	
	BRASS	— # —	SWITCH BUSHING	
	MATERIAL	WEIGHT PER PC.	TAC-1	
	FREE TURNING			
	TYPE & TEMPER		C.I.D.	amb
			DRAWN	MECH. DES. APP.
			JAR	WDE
	HEAT TREAT. SPEC.		CMB	WDE
			CHECKED	FINAL APPROVAL
	FINISH & SPEC. NO.			PM-266

ISSUE	ITEM	CHANGED FROM	DATE	CN. NO.	DRAFTS	CHECKER	ENG. APP.
ALL OTHERS		TOLERANCES		SCALE			
		DEC. DIM. $\pm .005$					
		FRAC. DIM. $\pm 1/64$					
		ANGULAR DIM. \pm					
		DRILL, PUNCH, COMMERCIAL STOCK SIZES AND MANUFACTURERS TOLERANCES ARE NOT INCLUDED.					