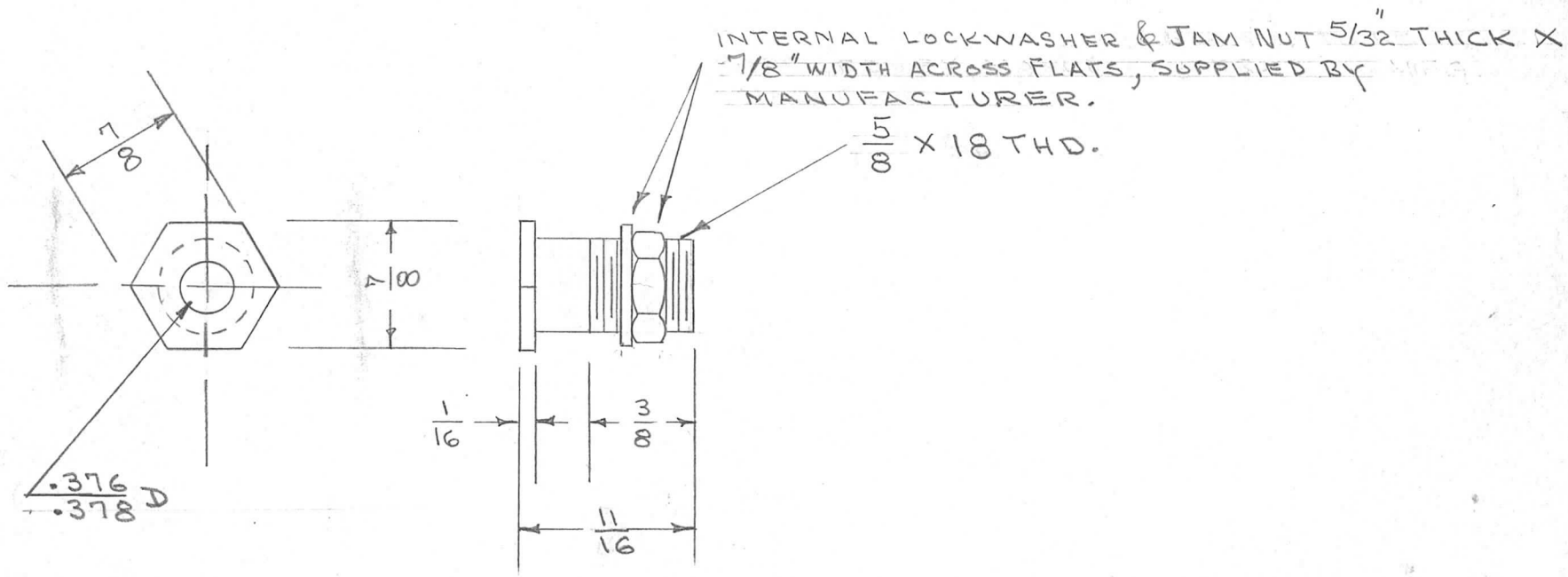


IF IT IS FOUND DESIRABLE TO CHANGE ANY TOLERANCE OR OTHER DETAIL SPECIFIED ON THIS DRAWING NOTIFY THE PURCHASER PROMPTLY.

PM-247 C

MAXIMUM ALLOWABLE TOLERANCES HAVE BEEN DETERMINED AND DEVIATIONS WILL BE CAUSE FOR REJECTION. REMOVE ALL BURRS AND SHARP EDGES

REQ. PER UNIT	USED ON			
	MODEL	PROJECT NO.	ASS'Y. NO.	DATE
2	TAC-1	132	A-719 A-717	1-22-54



REQ.	ITEM	PART NO.	DESCRIPTION	SYMBOL			
		7/8 HEX ROD	THE TECHNICAL MATERIEL CORP. MAMARONECK. NEW YORK				
		STOCK SIZE					
C	1	MFG. NOTE CLARIFIED					
B	1	THD. WAS 5/8 X 26					
	3	FINISH WAS CAD. PLATE					
A	2	5/8 WAS 3/4					
	1	REDRAWN					
ISSUE	ITEM	CHANGED FROM	DATE	CN. NO.	DRAFTS	CHECKER	ENG. APP.
TOLERANCES		SCALE		DRILL, PUNCH, COMMERCIAL STOCK SIZES AND MANUFACTURERS TOLERANCES ARE NOT INCLUDED.			
ALL OTHERS	DEC. DIM. ±	S-135 NICKLE PLATE					
	FRAC. DIM. ±	FINISH & SPEC. NO.					
	ANGULAR DIM. ±	HEAT TREAT. SPEC.					
		DRAWN		ELEC. DES. APP.		MECH. DES. APP.	
		CHECKED		FINAL APPROVAL			
				PM-247		C	