

IF IT IS FOUND DESIRABLE TO CHANGE ANY TOLERANCE OR OTHER DETAIL SPECIFIED ON THIS DRAWING NOTIFY THE PURCHASER PROMPTLY.

PM-246 A

MAXIMUM ALLOWABLE TOLERANCES HAVE BEEN DETERMINED AND DEVIATIONS WILL BE CAUSE FOR REJECTION. REMOVE ALL BURRS AND SHARP EDGES

USED ON

MODEL	PROJECT NO.	ASS'Y. NO.	DATE
R-8	168	A-289	7/27/53
R-10	168	A-289	7/27/53
R-12	168	A-289	7/27/53

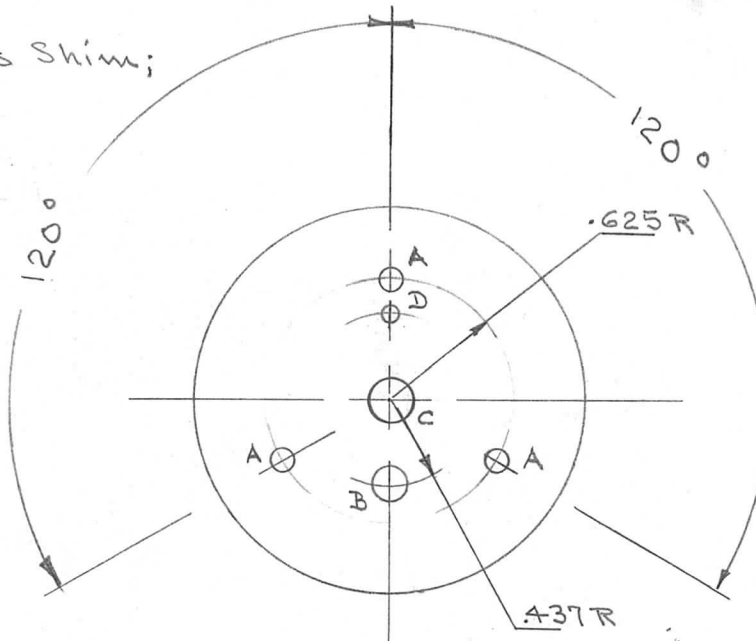
NOTE:

Supply the following with this Shim;

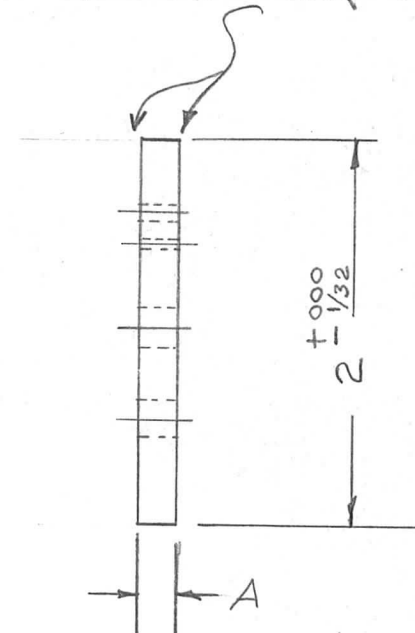
- (3) NTH0440BCG
- (3) LWS 04 LRC
- (3) SCBS0440BC9

REF: A-289

TMC PART NO.	A DIM.	TAPE SIZE
PM 246	3/16	5/8
PM 246-2	5/16	3/4
PM 246-3	7/16	7/8
PM 246-4	9/16	1



Remove Sharp Edges



- A = #30 Drill (.128) 3 REQ.
- B = #11 Drill (.191) 1 REQ.
- C = .252 ± .001 1 REQ.
- D = #34 Drill (.111) 1 REQ.

REQ.	ITEM	PART NO.	DESCRIPTION	SYMBOL									
		3/16 Thick	THE TECHNICAL MATERIEL CORP. MAMARONECK. NEW YORK	SHIM									
		STOCK SIZE											
		ALUM OR BRASS											
		MATERIAL	WEIGHT PER PC.										
A		PART. NO. CHT. ADDED 7/11/53 19500 GE JDO SDH/12											
ISSUE	ITEM	CHANGED FROM	DATE	CN. NO.	DRAFTS	CHECKER	ENG. APP.	TYPE & TEMPER	JDO				
TOLERANCES								SCALE	FULL				
ALL OTHERS								DEC. DIM. ± .005	FRAC. DIM. ±	ANGULAR DIM. ±	DRILL, PUNCH, COMMERCIAL STOCK SIZES AND MANUFACTURERS TOLERANCES ARE NOT INCLUDED.		
								HEAT TREAT. SPEC.	ANODIZE OR NICKEL PLATE	FINISH & SPEC. NO.	CHECKED	FINAL APPROVAL	
												PM-246 A	