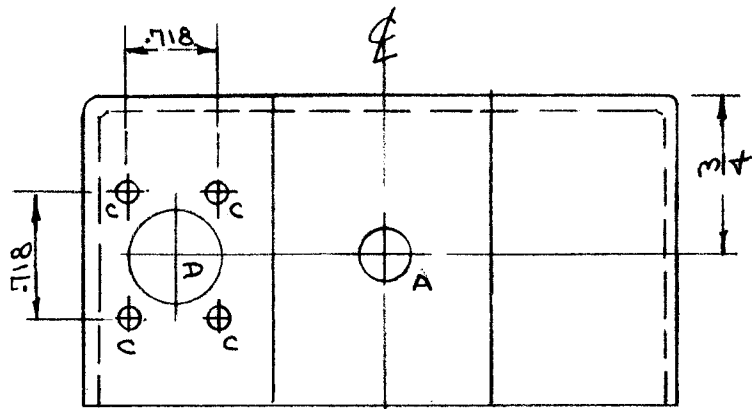
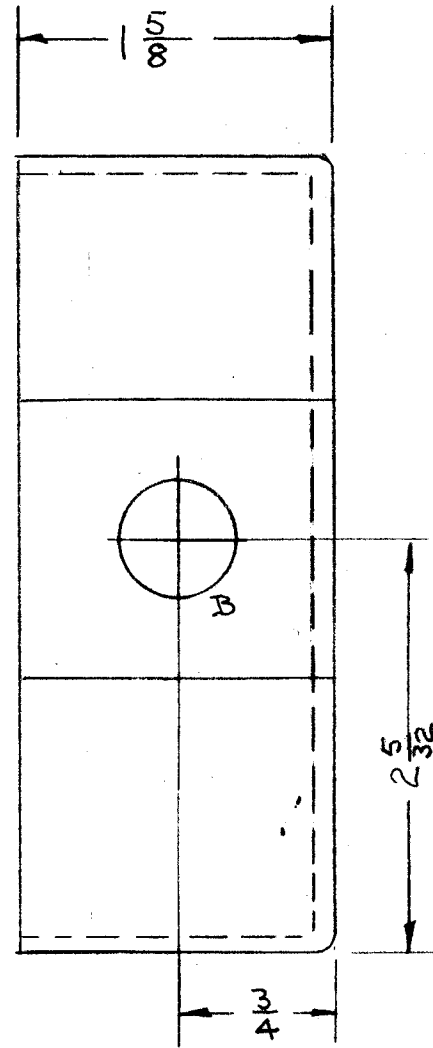
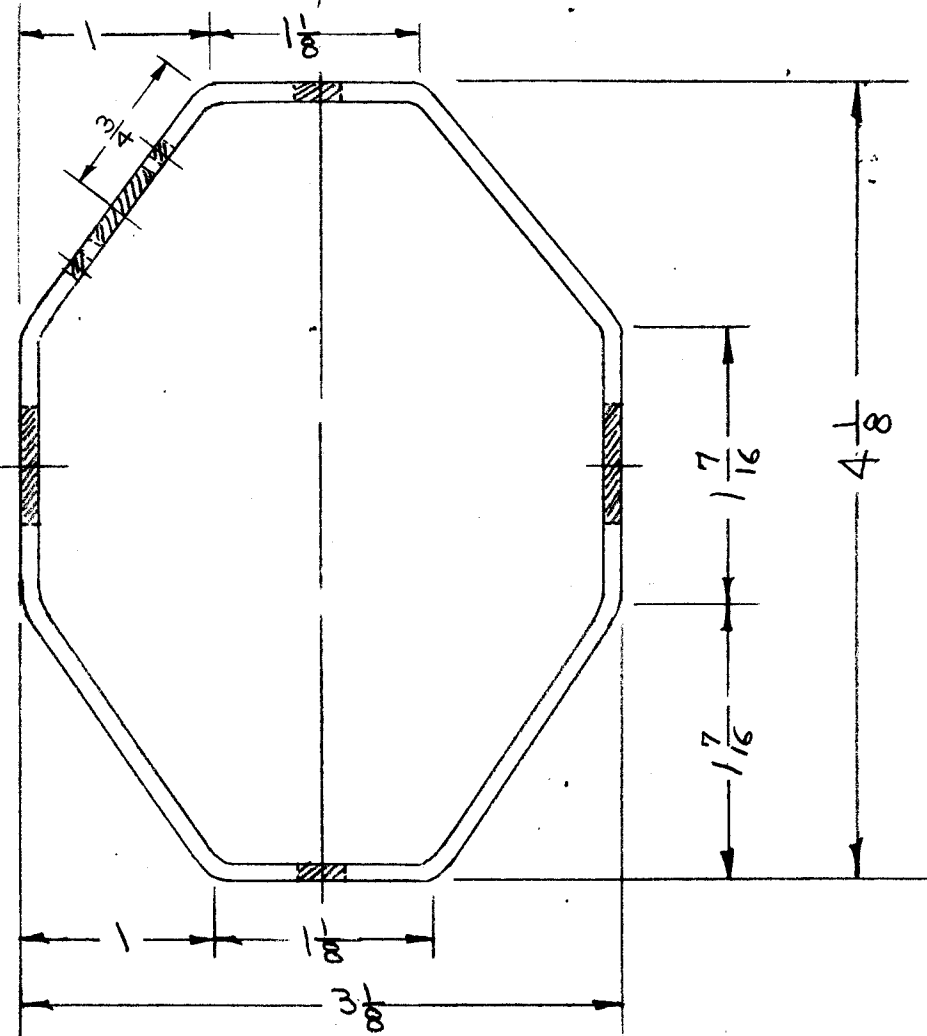


IF IT IS FOUND DESIRABLE TO CHANGE ANY TOLERANCE OR OTHER DETAIL SPECIFIED ON THIS DRAWING NOTIFY THE PURCHASER PROMPTLY.

MAXIMUM ALLOWABLE TOLERANCES HAVE BEEN DETERMINED AND DEVIATIONS WILL BE CAUSE FOR REJECTION. REMOVE ALL BURRS AND SHARP EDGES



PM-237



A = 9/32 D 2 REQ.
 B = 5/8 D 2 REQ.
 C = 1/8 D 4 REQ.
 D = 1/2 D 1 REQ.

NOTE:
 Material Lay-Up - 10 PLYS OF Preimpregnated Material.
 After PLYS Are Laid Up, The Mold Is Sealed In A Bag of Poly Vinyl Alcohol. A Vacuum Is Applied And The Unit Is Cured In An Oven At 135° C For 1 1/2 Hours.

NOTICE TO PERSONS RECEIVING THIS DRAWING

THE TECHNICAL MATERIEL CORPORATION claims proprietary right in the material disclosed hereon. This drawing is issued in confidence for engineering information only and may not be reproduced or used to manufacture anything shown hereon without permission from THE TECHNICAL MATERIEL CORPORATION to the user. This drawing is loaned for mutual assistance and is subject to recall at any time.

Property of:
 THE TECHNICAL MATERIEL CORPORATION
 MAMARONECK, NEW YORK

Mold Dimensions:
 2 1/2" Thickness of Laminated Plywood

REQ.	ITEM	PART NO.	DESCRIPTION	SYMBOL
			THE TECHNICAL MATERIEL CORP. MAMARONECK, NEW YORK	
			CASE (small size)	
			DIPOLE ANTENNA COUPLER	
			DRAWN: <i>[Signature]</i>	
			ELEC. DES. APP. <i>[Signature]</i>	
			MECH. DES. APP. <i>[Signature]</i>	
			CHECKED: <i>[Signature]</i>	
			FINAL APPROVAL: <i>[Signature]</i>	
			HEAT TREAT. SPEC. S-115	
			SMOOTH GREY ENAMEL	
			FINISH & SPEC. NO.	

ISSUE	ITEM	CHANGED FROM	DATE	CN. NO.	DRAFTS	CHECKER	ENG. APP.
TOLERANCES							
SCALE: FULL							
DRILL, PUNCH, COMMERCIAL STOCK SIZES AND MANUFACTURERS TOLERANCES ARE NOT INCLUDED.							

1	DAC	180	A-623	12-3-53
	MODEL	PROJECT NO.	ASS'Y. NO.	DATE

USED ON

PM-237