

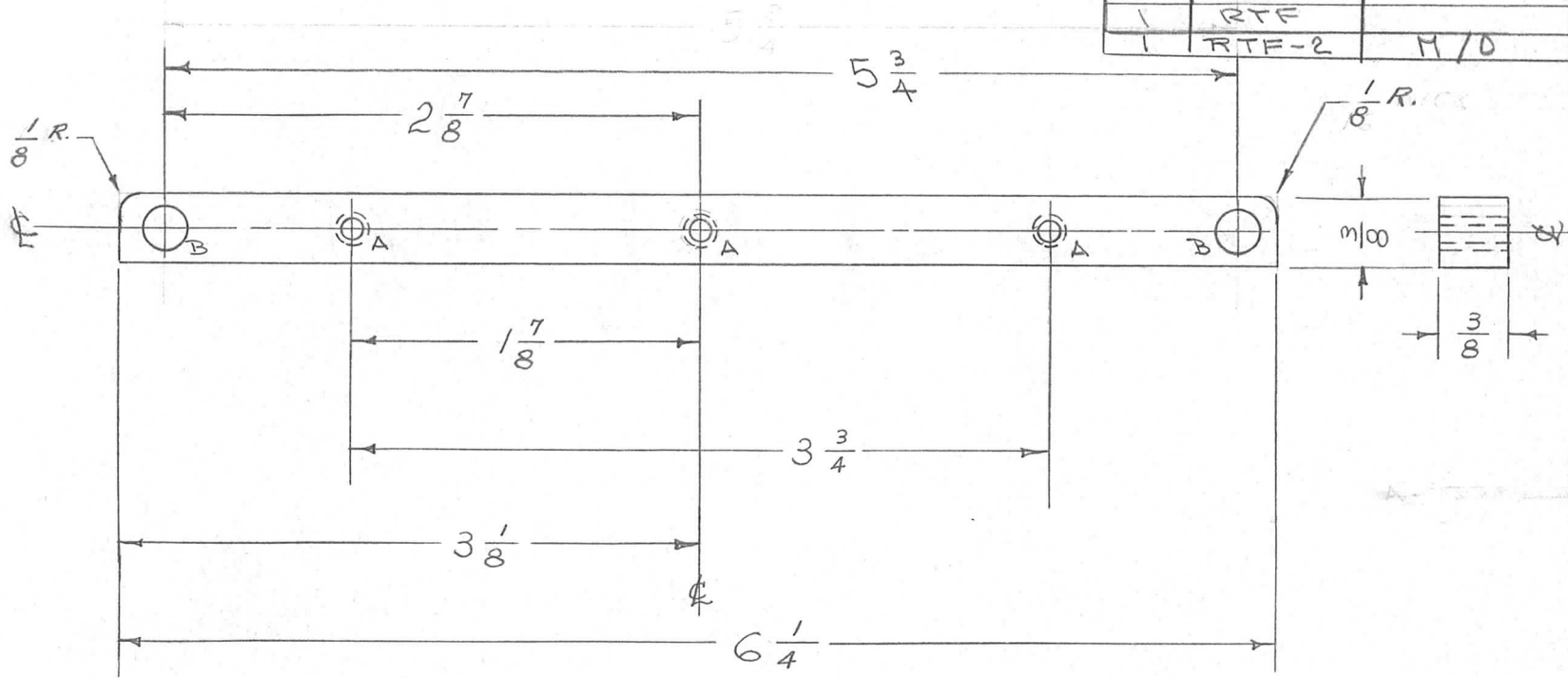
IF IT IS FOUND DESIRABLE TO CHANGE ANY TOLERANCE OR OTHER DETAIL SPECIFIED ON THIS DRAWING NOTIFY THE PURCHASER PROMPTLY.

PM-216 A

MAXIMUM ALLOWABLE TOLERANCES HAVE BEEN DETERMINED AND DEVIATIONS WILL BE CAUSE FOR REJECTION. REMOVE ALL BURRS AND SHARP EDGES

REQ. PER UNIT	USED ON			
	MODEL	PROJECT NO.	ASS'Y. NO.	DATE
1	PMO-1	285		1-19-55
1	VOX	101		1-19-55
1	VOX-1 VOX-2	291		1-19-55
1	RTF			2-1-56
1	RTF-2	M/D		10-10-58

A - DRILL & TAP G-32 3 REQ.
B - 1/4 D (.250) 2 REQ.



REQ.	ITEM	PART NO.	DESCRIPTION	SYMBOL
		3/8 X 3/8	THE TECHNICAL MATERIEL CORP. MAMARONECK, NEW YORK	
		STOCK SIZE		
		ALUMINUM	FRONT SUPPORT ARM	
		MATERIAL	WEIGHT PER PC.	
		2024 - T4	COVEN ASSY.	
		TYPE & TEMPER	M.B. - 1-19-55	W.C.
			DRAWN	ELEC. DES. APP.
			J.A.B. 1-19-55	MECH. DES. APP.
		HEAT TREAT. SPEC.	CHECKED	FINAL APPROVAL
		S-101 CAUSTIC DIP S-107 LACQUER FINISH & SPEC. NO.		PM-216 A

ISSUE	ITEM	CHANGED FROM	DATE	CN. NO.	DRAFTS	CHECKER	ENG. APP.
A	1	1/8 R. ADDED	3-28-55	1	P.B.	J.A.B.	W.C.

TOLERANCES	SCALE
DEC. DIM. ± FRAC. DIM. ± 1/64 ANGULAR DIM. ±	DRILL, PUNCH, COMMERCIAL STOCK SIZES AND MANUFACTURERS TOLERANCES ARE NOT INCLUDED.