

5

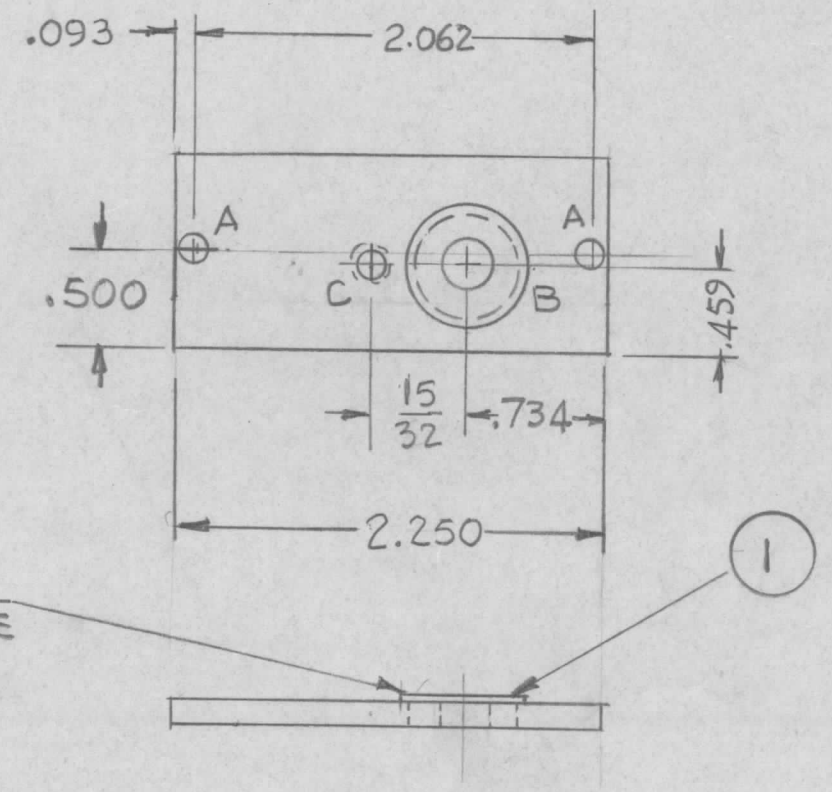
4

3

2

1

REVISIONS							
E.M.N. NO.	DRAFT	CHKD	ZONE	LTR	DESCRIPTION	DATE	APPROVED
				X	EXP. RELEASE		
<i>th</i>	<i>cl</i>	<i>9/8/76</i>		\emptyset	ORIGINAL RELEASE	<i>8/76</i>	<i>*</i>



HOLE:
 A — 9/64 2 REQ
 B — .625⁺⁰⁰⁰₋₀₀₃ DIA
 C — DRILL & TAP FOR 8-32

PRESS FIT FROM THIS SIDE

1	1	BB126-5	RACE, BEARING	
REQ'D	ITEM	PART NUMBER	DESCRIPTION	SYM.

LIST OF MATERIAL

1	TLAA-1K	?
QTY / UNIT	MODEL USED ON	ASS'Y NO.
APPLICATION		
CODE		

NOTICE TO PERSONS RECEIVING THIS DRAWING
 THE TECHNICAL MATERIEL CORPORATION claims proprietary right in the material disclosed hereon. This drawing is issued in confidence for engineering information only and may not be reproduced or used to manufacture anything shown hereon without permission from THE TECHNICAL MATERIEL CORPORATION to the user. This drawing is loaned for mutual assistance and is subject to recall at any time.

UNLESS OTHERWISE SPECIFIED DIMENSIONS ARE IN INCHES AND INCLUDE CHEMICALLY APPLIED OR PLATED FINISHES	FINAL APPROVAL <i>* QR</i>	DATE <i>8/2-76</i>
MECH. DES.		DATE
ELECT. DES.		DATE
CHECKED		DATE
DRAWN <i>G. DE LUCA</i>		DATE <i>4.3.75</i>
MATERIAL <i>1/8 THK ALUM 2024-T3</i>		
FINISH <i>S404 YEL IRIDITE</i>		

THE TECHNICAL MATERIEL CORP.
 MAMARONECK, NEW YORK

PLATE, REAR GEAR
 TUNE ASSY

SIZE B	CODE IDENT. NO. 82679	DWG NO. PM 1583	ISSUE \emptyset
SCALE 1:1		SHEET OF	