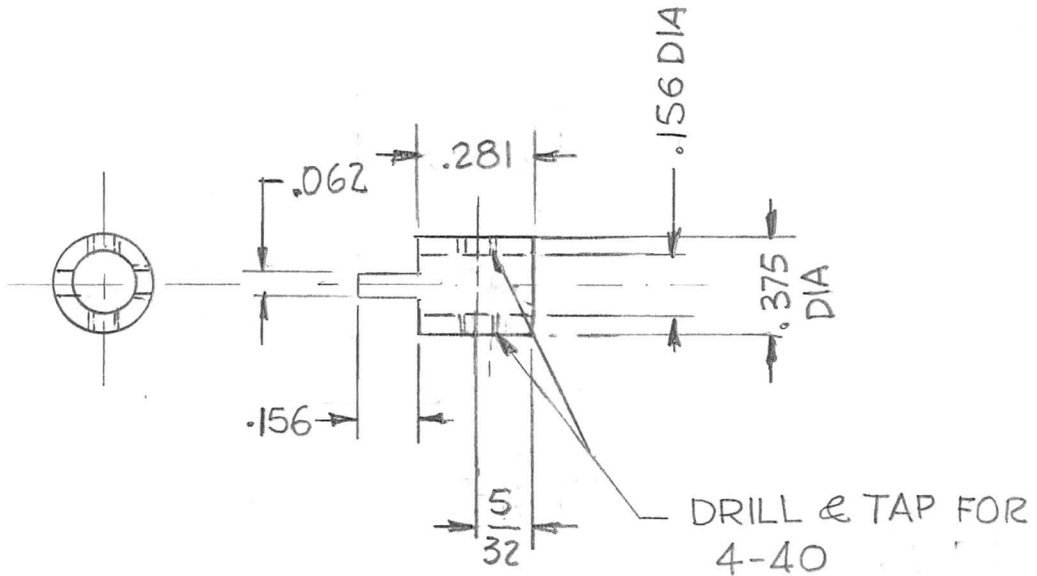


APPLICATION			REVISIONS							
QTY	MODEL USED ON	ASS'Y NO.	LTR	DESCRIPTION	DATE	E.M.N.NO	DRAFT	CHKD	APPD	
1	GPR 110		X1	.281 WAS .375, 5/32 WAS 3/16 ONE TAP HOLE ADD	8-30-74			GDL		
			X2	DRILL & TAP HOLES WERE AT 45°						
			Ø	Original Release	1-19-77			GDL	*	



UNLESS OTHERWISE SPECIFIED DIMENSIONS ARE IN INCHES AND INCLUDE CHEMICALLY APPLIED OR PLATED FINISHES		REQ'D	ITEM	PART NUMBER	DESCRIPTION	SYM.		
DECIMALS: .X ± .05, .XX ± .01, .XXX ± .005 FRACTIONS: 1/64, ANGLES: 0° - 30'		LIST OF MATERIAL						
MATERIAL: STAINLESS STEEL		FINAL APPROVAL: <i>DB</i>		DATE: 1/10/77		THE TECHNICAL MATERIEL CORP. MAMARONECK, NEW YORK SHAFT COUPLING		
FINISH: NATURAL		MECH. DES.		DATE				
		ELECT. DES.		DATE				
		CHECKED		DATE				
		DRAWN: <i>G De Lino</i>		DATE: 7-19-74				
NOTICE TO PERSONS RECEIVING THIS DRAWING THE TECHNICAL MATERIEL CORPORATION claims proprietary right in the material disclosed hereon. This drawing is issued in confidence for engineering information only and may not be reproduced or used to manufacture anything shown hereon without permission from THE TECHNICAL MATERIEL CORPORATION to the user. This drawing is loaned for mutual assistance and is subject to recall at any time.					SIZE: A	CODE IDENT. NO.: 82679	DWG NO.: PM 1579	ISSUE: <input checked="" type="checkbox"/>
SCALE: 2:1				SHEET OF				