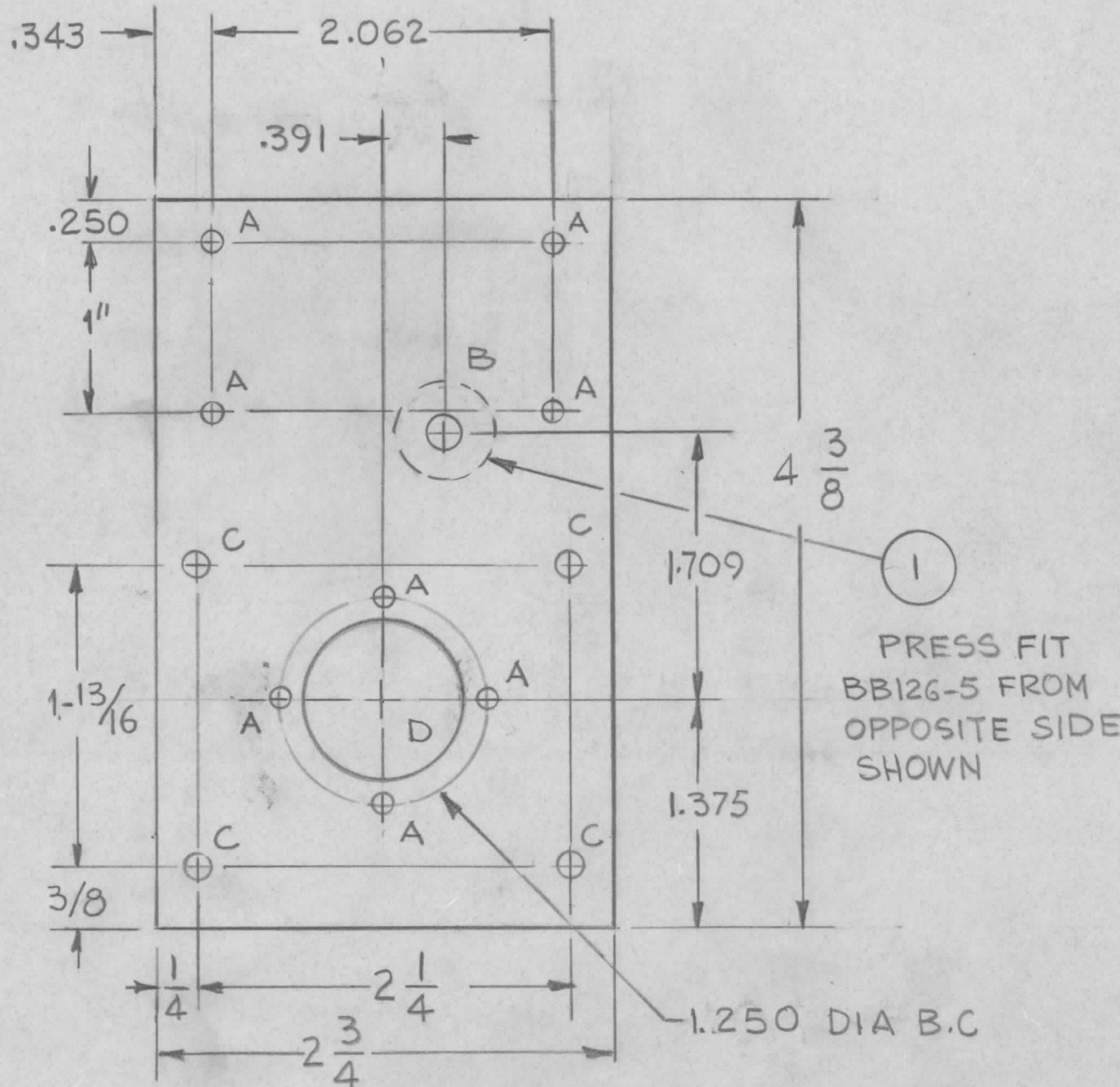


REVISIONS							
E.M.N. NO.	DRAFT	CHKD	ZONE	LTR	DESCRIPTION	DATE	APPROVED
	CL			Ø	ORIGINAL RELEASE FOR PRODUCTION	6/16/75	
21582	GDC	AWB		A	DIA 1" WAS 15/16	10-18-77	*



HOLE	DESCRIPTION	REQ'D
A	9/64 DIA	8
B	.625 DIA	1
C	11/64 DIA	4
D	1 1/4" DIA	1

REQ'D	ITEM	PART NUMBER	DESCRIPTION	SYM.
1	1	BB126-5	RACE, BEARING	

LIST OF MATERIAL

1	TLAA-1K	AX5132
QTY / UNIT	MODEL USED ON	ASS'Y NO.
APPLICATION		
CODE		

NOTICE TO PERSONS RECEIVING THIS DRAWING
 THE TECHNICAL MATERIEL CORPORATION claims proprietary right in the material disclosed hereon. This drawing is issued in confidence for engineering information only and may not be reproduced or used to manufacture anything shown hereon without permission from THE TECHNICAL MATERIEL CORPORATION to the user. This drawing is loaned for mutual assistance and is subject to recall at any time.

UNLESS OTHERWISE SPECIFIED DIMENSIONS ARE IN INCHES AND INCLUDE CHEMICALLY APPLIED OR PLATED FINISHES	FINAL APPROVAL * [Signature]	DATE 3/27/75
DECIMALS .X ± .05 .XX ± .01 .XXX ± .005	FRACTIONS 1/64 ANGLES 0° - 30'	MECH. DES.
MATERIAL 1/8 THK ALUM 2024-T3	ELECT. DES.	DATE
FINISH 5404 YEL IRIDITE	CHECKED	DATE
	DRAWN [Signature]	DATE 3-13-74

THE TECHNICAL MATERIEL CORP. MAMARONECK, NEW YORK			
FRONT, GEAR PLATE TUNE ASSY (FOR MO126)			
SIZE B	CODE IDENT. NO. 82679	DWG NO. PM1577	ISSUE A
SCALE	SHEET		OF