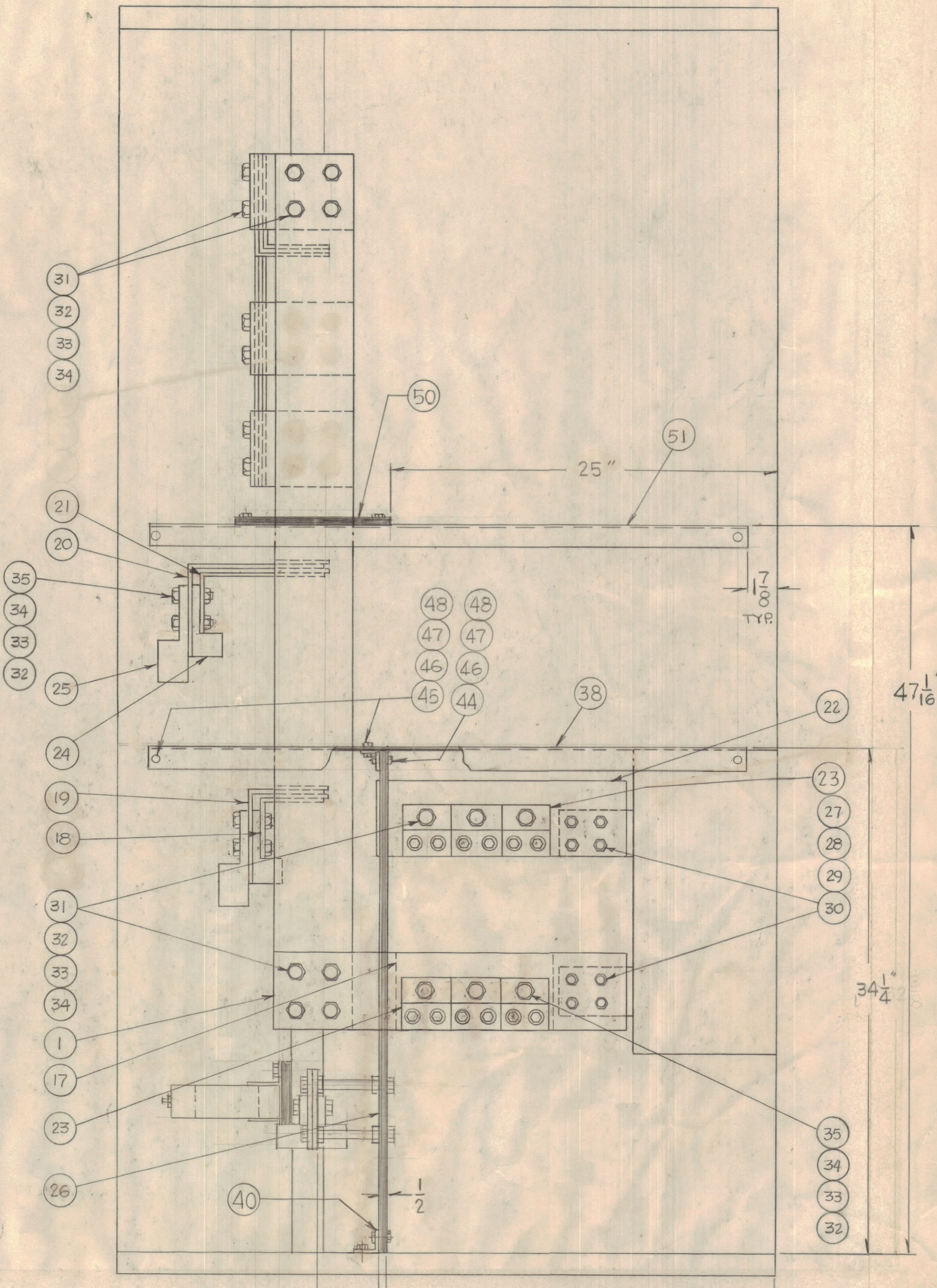
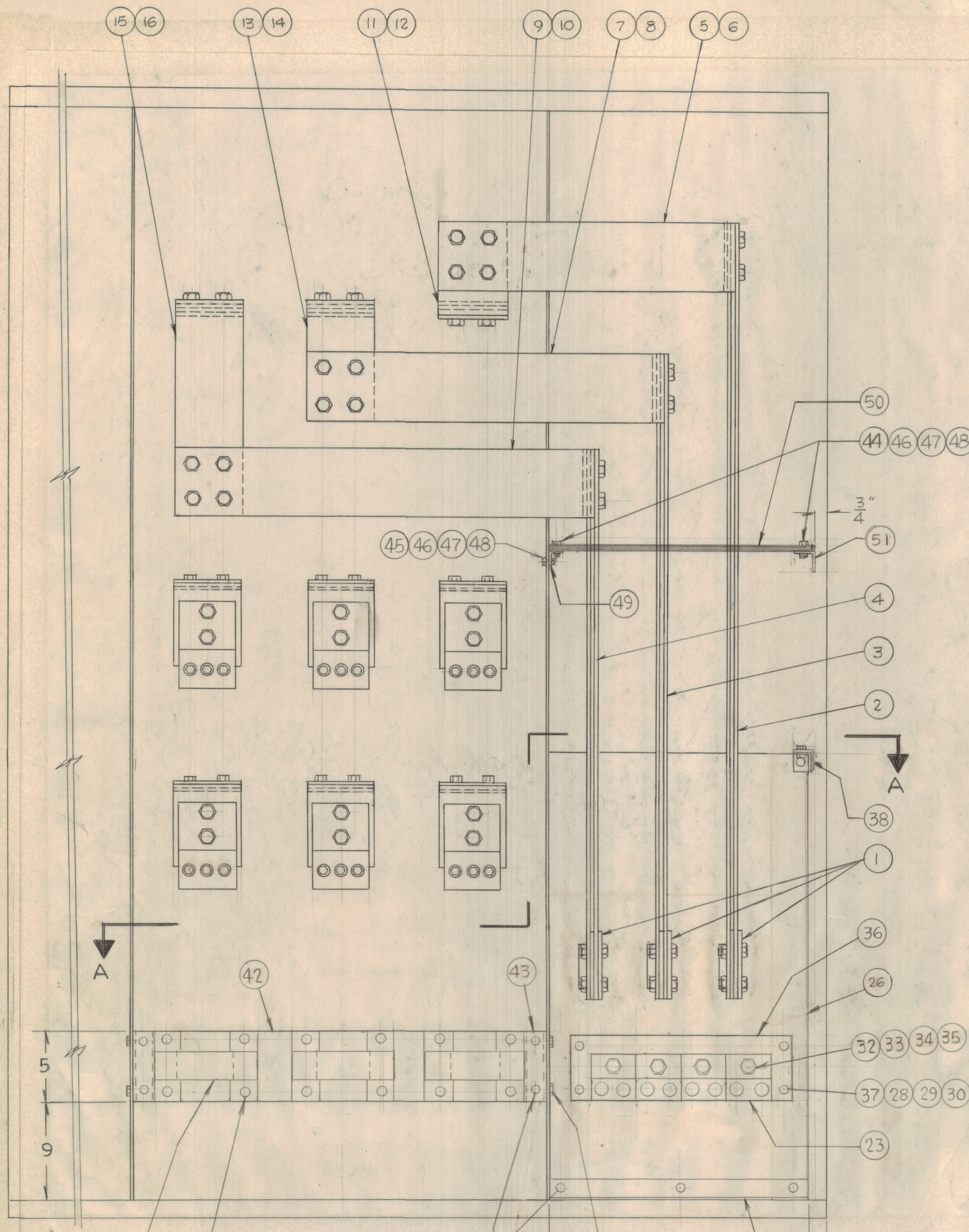


REVISIONS						
ZONE	LTR	DESCRIPTION	DATE	DRAFT	CHK'D	APP'D



QTY REQ	QTY REQ	QTY REQ	ITEM	PART NO.	MANUFACTURER	DESCRIPTION	SYM
1	51	MS6168-1	TMC	1/8 x 1 1/2 x 1 1/2 BAR ANGLE, STL, 38 1/4"			
1	50	TMC	BENELEX SUPPORT				
1	49	TMC	1/8 x 1 x 1 BAR ANGLE, ALUM, 9 3/16 LG				
36	48			3/8" FLAT WASHER, STL.			
36	47			3/8" LOCK WASHER, SPLIT, STL.			
36	46			3/8-16 UNC HEX. NUT, STL.			
12	45			3/8-16 UNC X 7/8" HEX. HD. BOLT, STL.			
24	44			3/8-16 UNC X 1 1/4" HEX. HD. BOLT, STL.			
2	43	TMC	1/8 x 1 1/2 x 1 1/2 BAR ANGLE, STL, 5" LG				
1	42	TMC	BENELEX - CT SUPPORT				
3	41	ELECTRO MAGNETIC	CURRENT TRANSFORMER, 2000:5				
1	40	TMC	1/8 x 1 1/2 x 1 1/2 BAR ANGLE, STL, 19" LG				
1	39			1/8 x 1 1/2 x 1 1/2 ANGLE TAB			
1	38	TMC	1/8 x 1 1/2 x 1 1/2 BAR ANGLE, STL, 38 1/4"				
4	37			3/8-16 UNC ALUM. STUD, 6" LG.			
2	36	TMC	NEUTRAL BUS				
25	35			1/2 x 13 UNC x 2 1/2" HEX. HD BOLT-ALUM.			
88	34			1/2" FLAT WASHER, ALUM			
88	33			1/2" SPLIT LOCKWASHER, ALUM			
88	32			1/2-13 UNC HEX. NUT, ALUM.			
63	31			1/2 x 13 UNC x 2" HEX. HD BOLT-ALUM			
40	30			3/8" FLAT WASHER, ALUM			
40	29			3/8" SPLIT LOCKWASHER, ALUM.			
40	28			3/8-16 UNC HEX. NUT, ALUM.			
24	27			3/8 x 16 UNC x 2 1/2" HEX. HD BOLT-ALUM.			
1	26	TMC	BENELEX SUPPORT				
6	25	ILSCO	LUG				
6	24	ILSCO	LUG				
26	23	ILSCO	LUG				
6	22	TMC	BUS BAR				
3	21						
3	20						
3	19						
3	18						
3	17				SPACER		
1	16						
1	15						
1	14						
1	13						
1	12						
1	11						
1	10						
1	9						
1	8						
1	7						
1	6						
1	5						
2	4						
2	3						
2	2						
6	1	TMC	BUS BAR				

INTERPRET DRAWING PER LISTED DOCUMENTS DIMENSIONING MIL-STD-8 SURFACE ROUGHNESS MIL-STD-10 ABBREVIATIONS MIL-STD-12 ELECTRONIC SYMBOLS MIL-STD-15 WELDING SYMBOLS JAN-STD-19		UNLESS OTHERWISE SPECIFIED DIMENSIONS ARE IN INCHES AND INCLUDE CHEMICALLY APPLIED OR PLATED FINISHES REMOVE ALL BURRS AND SHARP EDGES TOLERANCES ON FRACTIONS ANGLES DECIMALS ± 1/32		DRAWN FRAMPTON R. M. FERNANDEZ DATE 5/14/73 CHECKED DATE 5-23-73 D. ENG. DATE 5-23-73 P. ENG. DATE P. MGR. DATE CHIEF, ENG. DEPT. DATE		THE TMC SYSTEMS AND POWER CORPORATION SPRINGFIELD, VIRGINIA 500KW AC CONTROL CABINET BUS BAR ASSEMBLY	
APPLICATION AX751 USED ON NEXT ASSY		NOTICE TO PERSONS RECEIVING THIS DRAWING THE TMC SYSTEMS AND POWER CORPORATION claims proprietary right in the material disclosed hereon. This drawing is issued in confidence for engineering information only and may not be reproduced or used to manufacture anything shown hereon without permission from THE TMC SYSTEMS AND POWER CORPORATION to the user. This drawing is loaned for mutual assistance and is subject to recall at any time.		FINISH		SIZE CODE IDENT NO DWG. NO. REV D 24146 PM1527	
SCALE		SHEET 1 OF 2		PARTS LIST		REV	