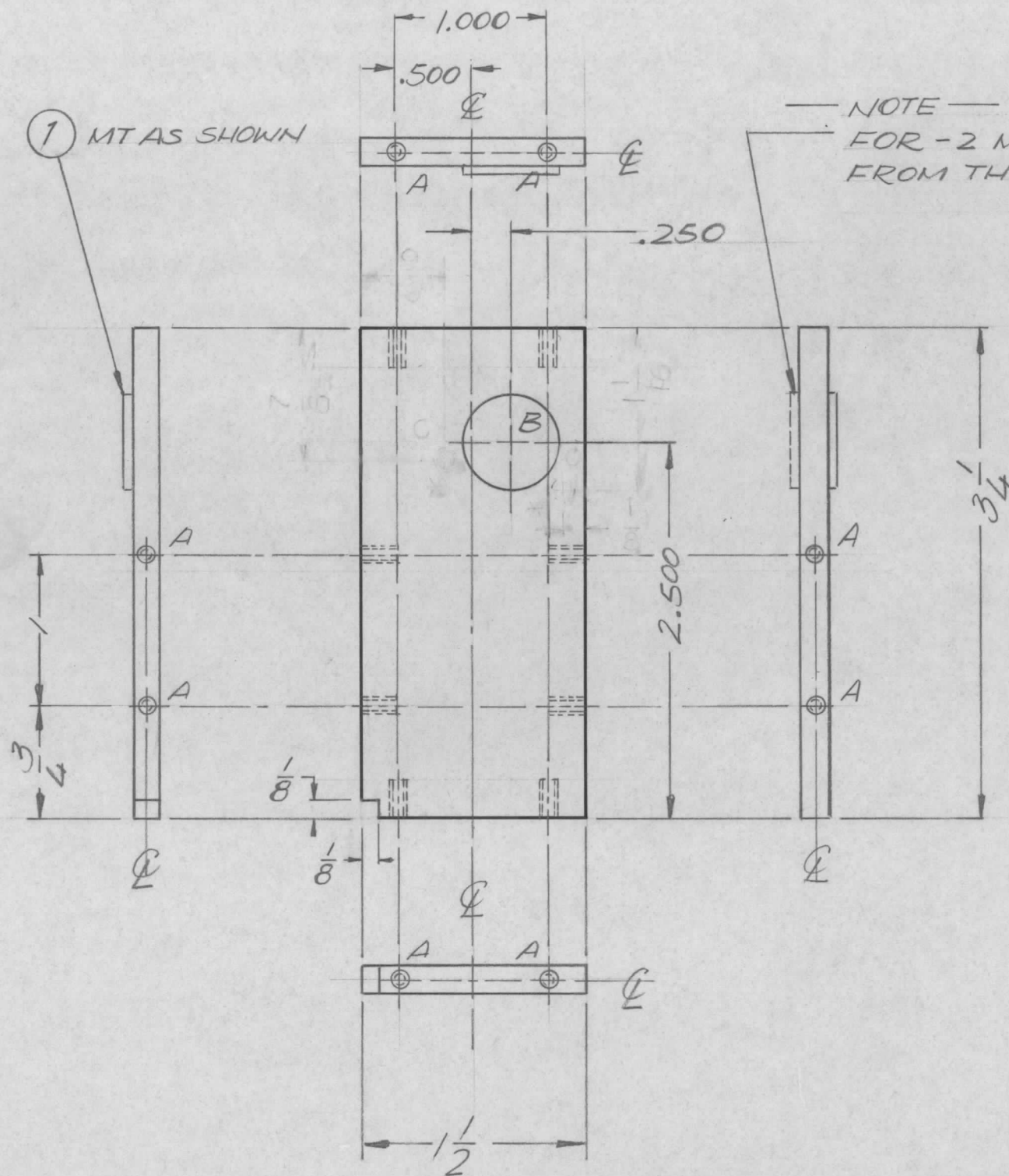


REVISIONS							
E.M.N. NO.	DRAFT	CHKD	ZONE	LTR	DESCRIPTION	DATE	APPROVED
	DV			Ø	ORIGINAL RELEASE FOR PRODUCTION	11/30/73	



NOTE
FOR -2 MOUNT BEARING
FROM THIS SIDE

HOLE DESCRIPTION REQ.
 A - DRILL & TAP FOR 0440 SC x 1/4 DEEP - 8 REQ.
 B - .625 DIA - 1 REQ.
 C - DRILL & TAP FOR 0632 THRU - 2 REQ.

* NOTE:
2 CHANGES TO BE DRILLED & TAPED ONLY
FOR PM1524-2

2	AX5176	AX5179
QTY / UNIT	MODEL USED ON	ASS'Y NO.
APPLICATION		
CODE		

NOTICE TO PERSONS RECEIVING THIS DRAWING
 THE TECHNICAL MATERIEL CORPORATION claims proprietary right in the material disclosed hereon. This drawing is issued in confidence for engineering information only and may not be reproduced or used to manufacture anything shown hereon without permission from THE TECHNICAL MATERIEL CORPORATION to the user. This drawing is loaned for mutual assistance and is subject to recall at any time.

UNLESS OTHERWISE SPECIFIED
 DIMENSIONS ARE IN INCHES
 AND INCLUDE CHEMICALLY APPLIED
 OR PLATED FINISHES

DECIMALS .X ± .05
 .XX ± .01
 .XXX ± .005

FRACTIONS 1/64
 ANGLES 0° - 30'

MATERIAL 5052 H32
 3/16 ALUM
 FINISH 5404 YEL ID.

2	1	BB126-5	BEARING PRESS FIT	B
REQ'D	ITEM	PART NUMBER	DESCRIPTION	SYM.

F.B. LIST OF MATERIAL

FINAL APPROVAL	DATE	THE TECHNICAL MATERIEL CORP. MAMARONECK, NEW YORK
MECH. DES.	DATE	
ELECT. DES.	DATE	
CHECKED	DATE	
DRAWN	DATE	PLATE, BEARING, SIDE

SIZE	CODE IDENT. NO.	DWG NO.	ISSUE
B	82679	PM1524	Ø
SCALE 1:1		SHEET OF	