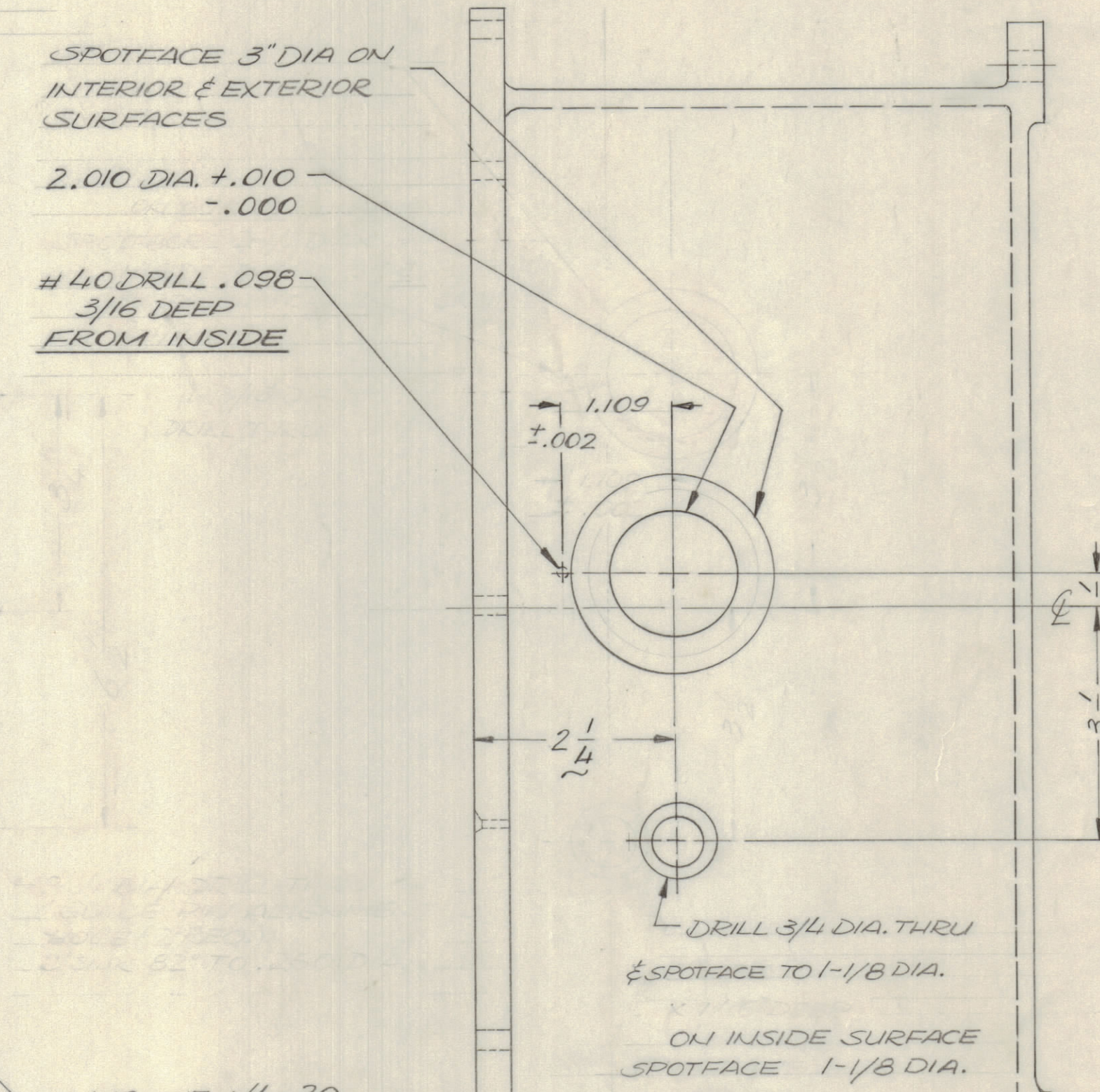
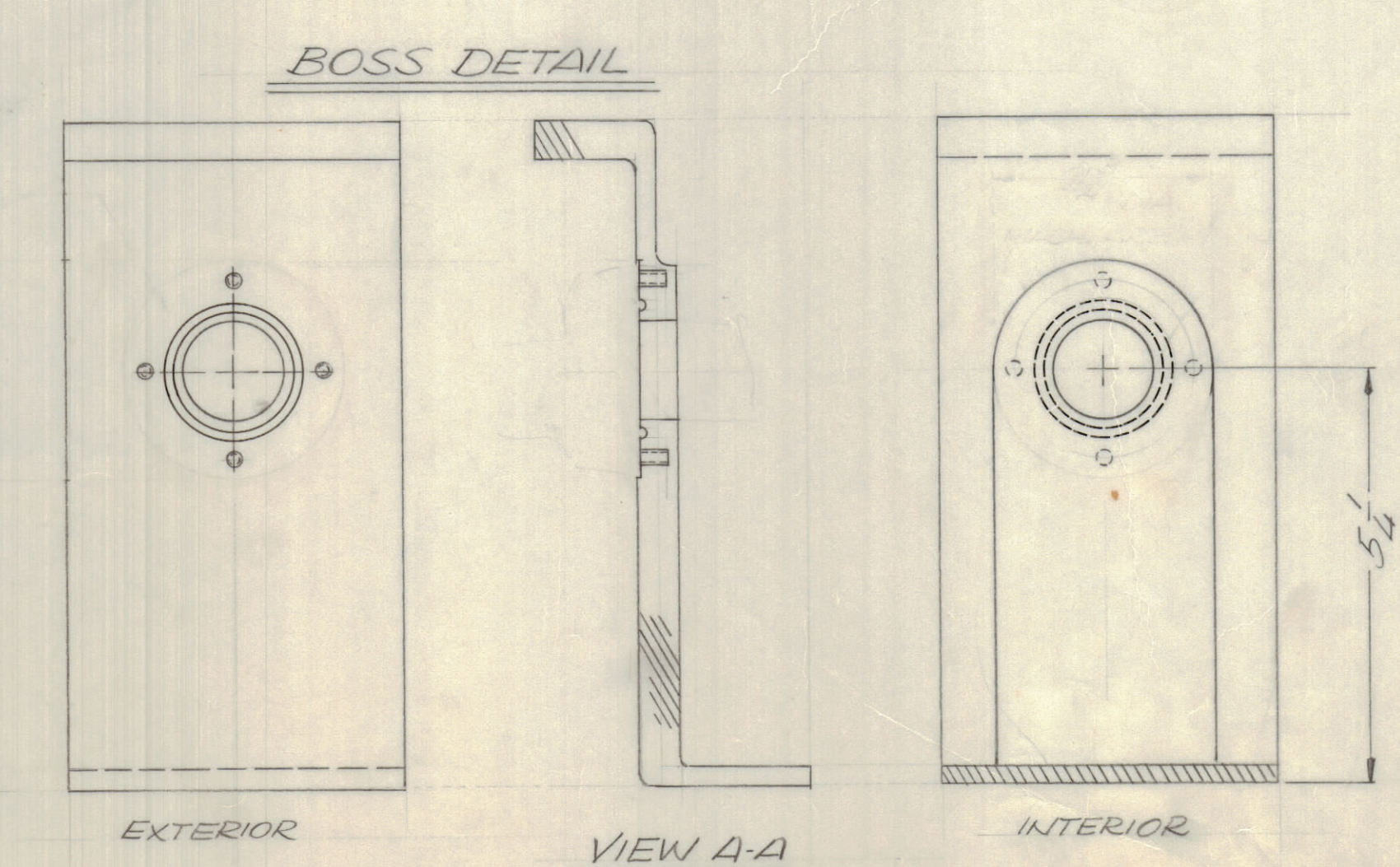
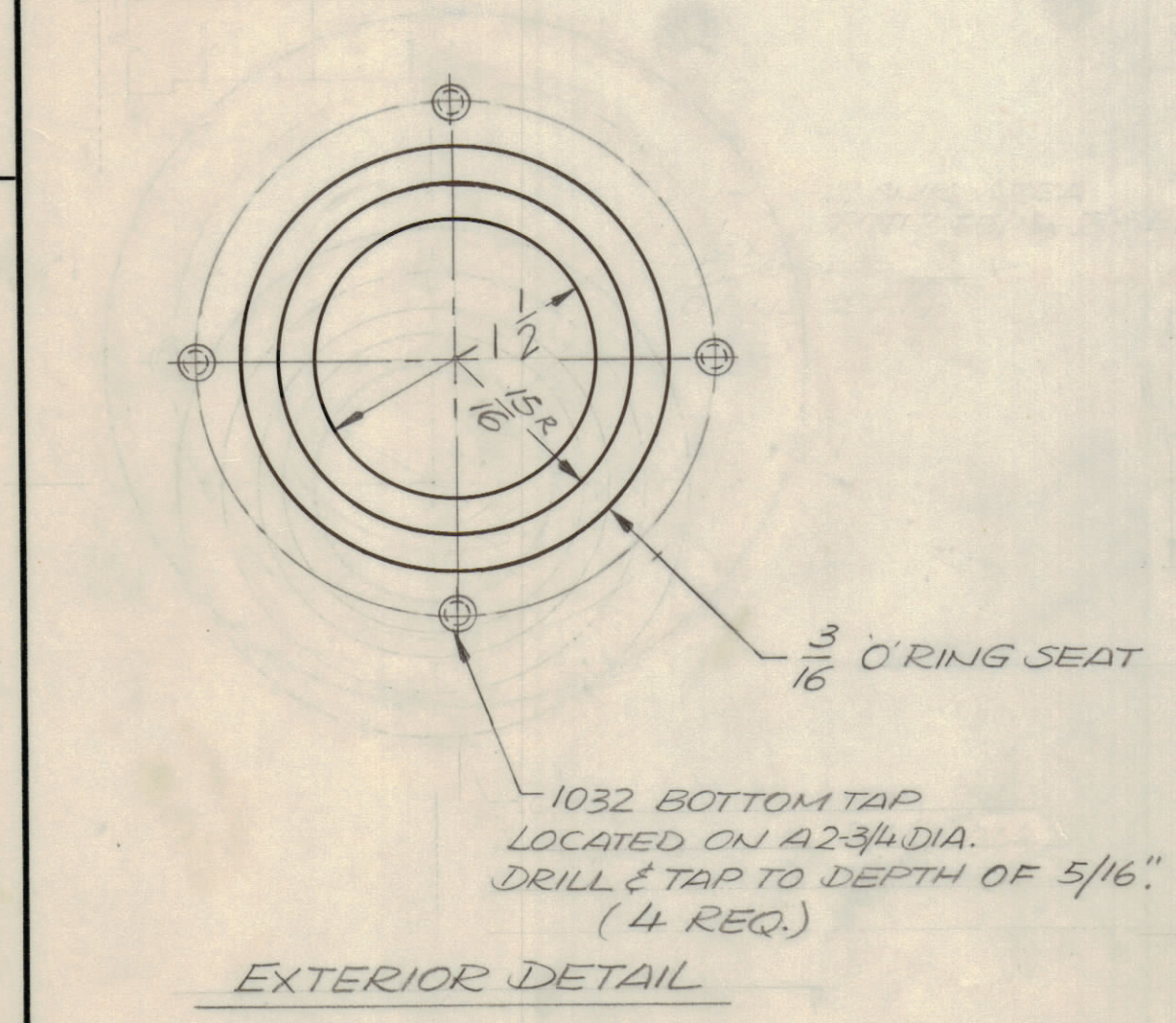
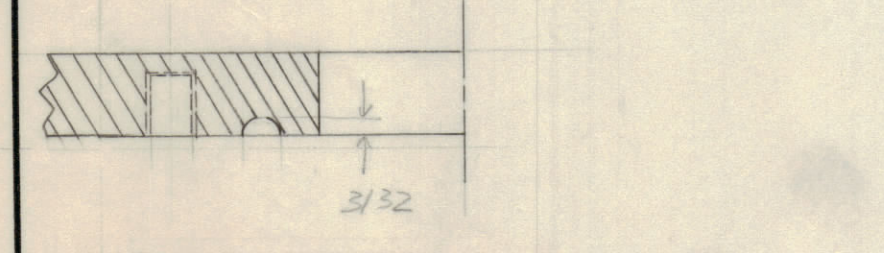
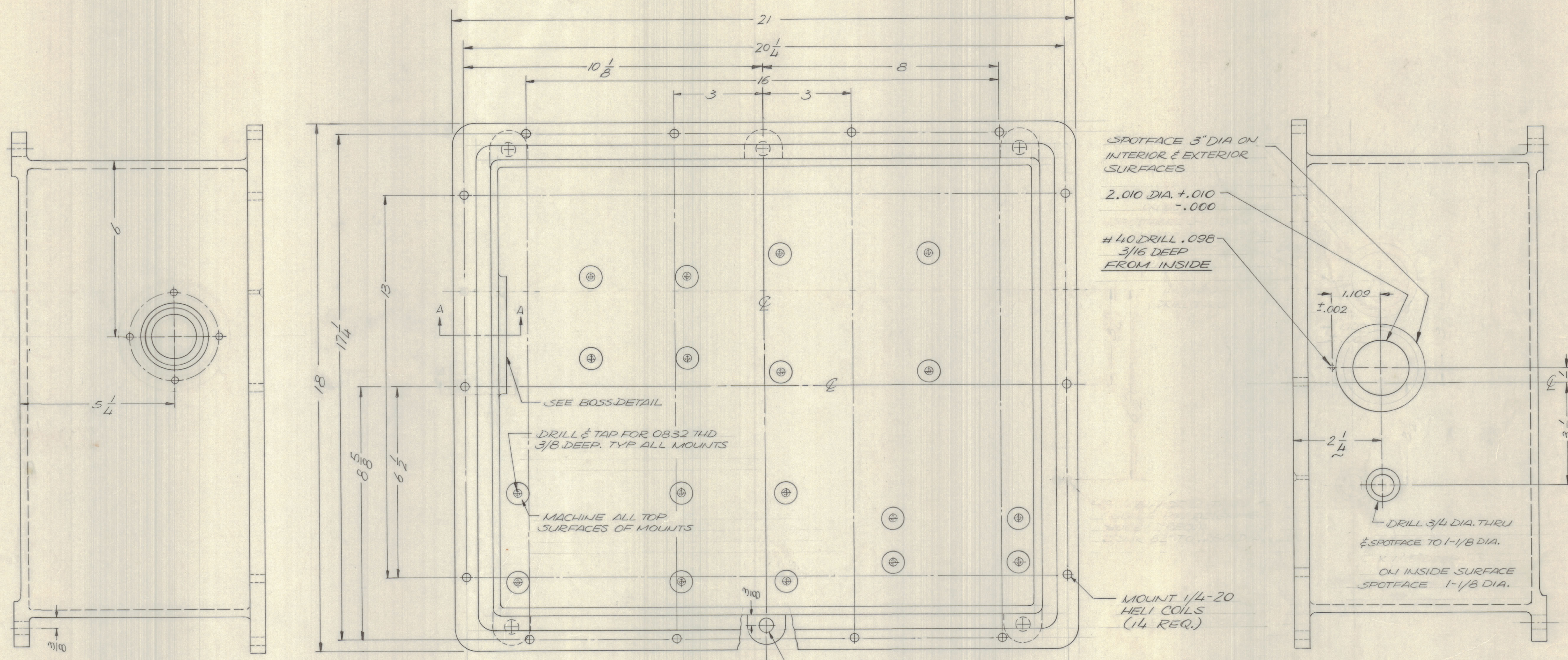


REVISIONS							
E.M.N.O.	DRAFT	CHKD	ZONE	LTR	DESCRIPTION	DATE	APPROVED
	GE			X	M/S CONN. PLUG HLE INCREASED TO 2.010 DIA. SPOTFACING ON BOTH SIDES INCREASE TO 3" DIA. ADD PILOT HLE (.098) DELE SPOTFACING ON BOTH SIDES FOR BOWL	3/7/73	
	CE			X	HELL COILS ADD FOR COVER MTC. WAS HOLES ORIGINAL RELEASE FOR PRODUCTION	5/2/73	
2131	GE	EJ		A	RIGHT SIDE VIEW 1/2 DIMENSION WAS 3/2	12/7/73	



- FINISH NOTES:
- S404 - IRIDITE 14-2 AL-COAT.
  - S114 - ZINC CHROMATE PRIMER
  - S115 - SMOOTH GRAY ENAMEL

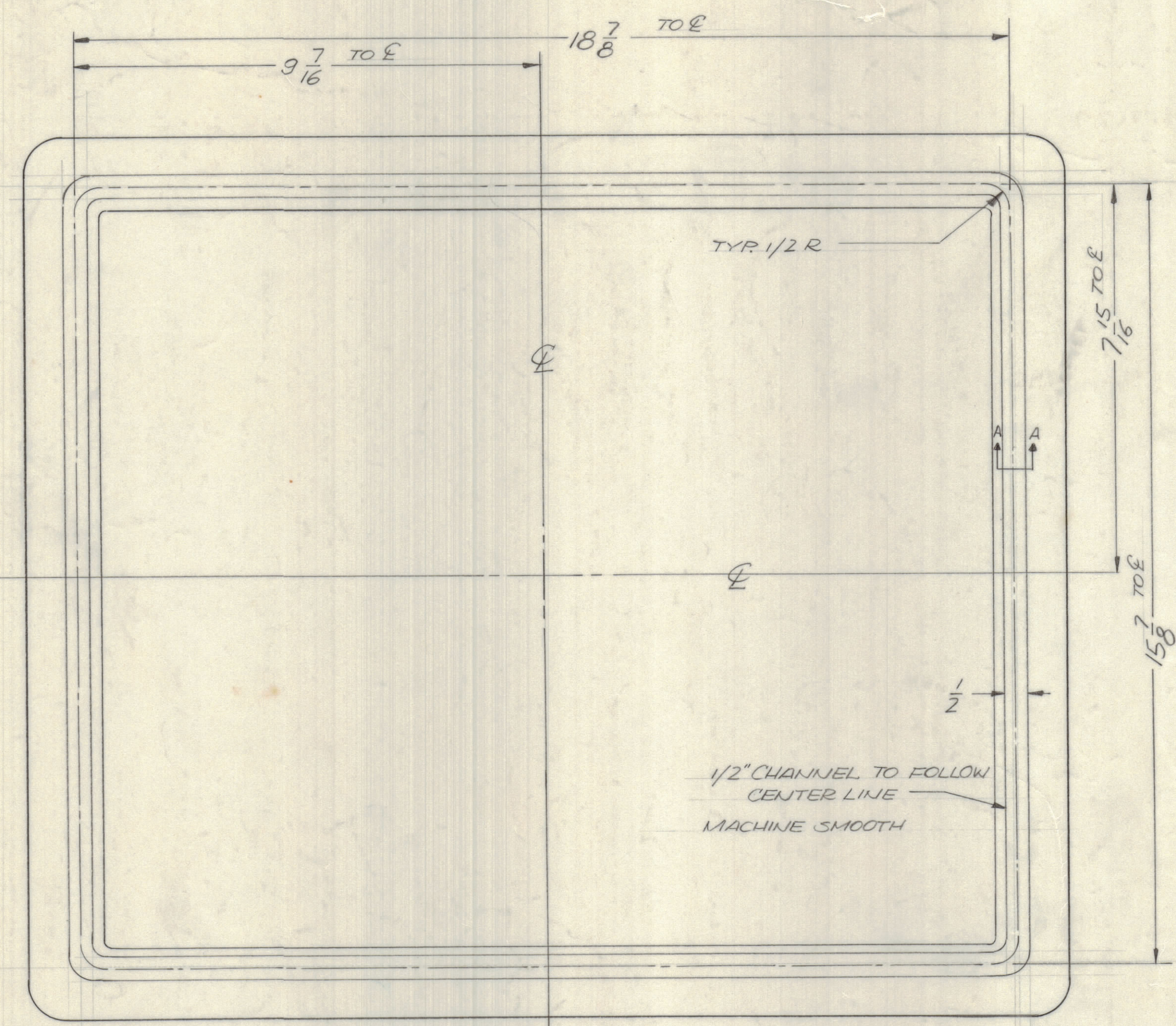
PAINT ALL SURFACES EXCEPT MACHINED AREAS.

QTY / UNIT	MODEL USED ON	ASSY NO.
AX5176		
APPLICATION		
CODE		

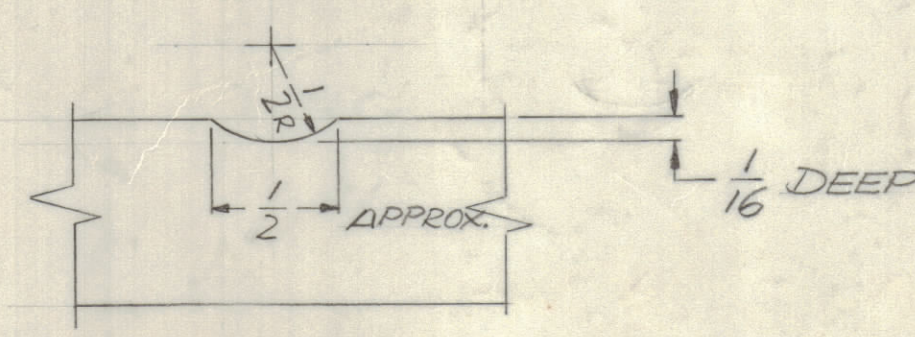
NOTICE TO PERSONS RECEIVING THIS DRAWING  
 THE TECHNICAL MATERIEL CORPORATION claims proprietary right in the material disclosed hereon. This drawing is issued in confidence for engineering information only and may not be reproduced or used to manufacture anything shown hereon without permission from THE TECHNICAL MATERIEL CORPORATION to the user. This drawing is loaned for mutual assistance and is subject to recall at any time.

QTY. REQ.	ITEM	PART NO.	DESCRIPTION	SYMBOL
F. BUDETTI LIST OF MATERIAL				
UNLESS OTHERWISE SPECIFIED DIMENSIONS ARE IN INCHES AND INCLUDE CHEMICALLY APPLIED OR PLATED FINISHES				
TOLERANCES ON				
DECIMALS		FRACTIONS		
X ± .05		= 1/64		
XX ± .01		ANGLES		
XXX ± .005		= 0°-30'		
THE TECHNICAL MATERIEL CORP. MAMARONECK, NEW YORK				
CASE, MACHINING				
SIZE CODE IDENT NO. DWG NO.			ISSUE	
D 82679 PM1522			A	
SCALE 1/2			SHEET 1 OF 2	

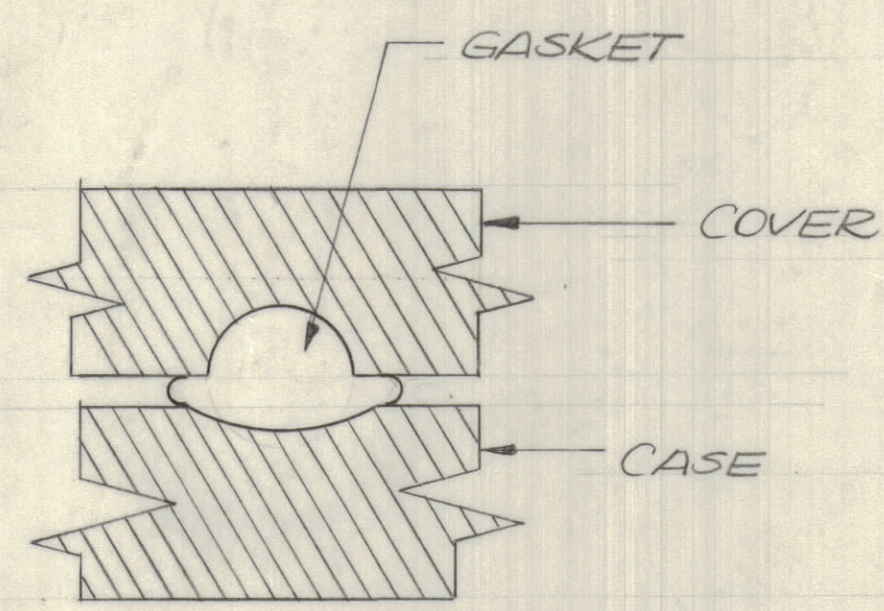
REVISIONS							
E.M.N.O	DRAFT	CHKD	ZONE	LTR	DESCRIPTION	DATE	APPROVED
	GE			X	SEE SHEET ONE	3/7/73	
	DV			Ø	ORIGINAL RELEASE FOR PRODUCTION	12/7/73	
2131	GE	ED		A	SEE SHEET ONE	1/23/74	



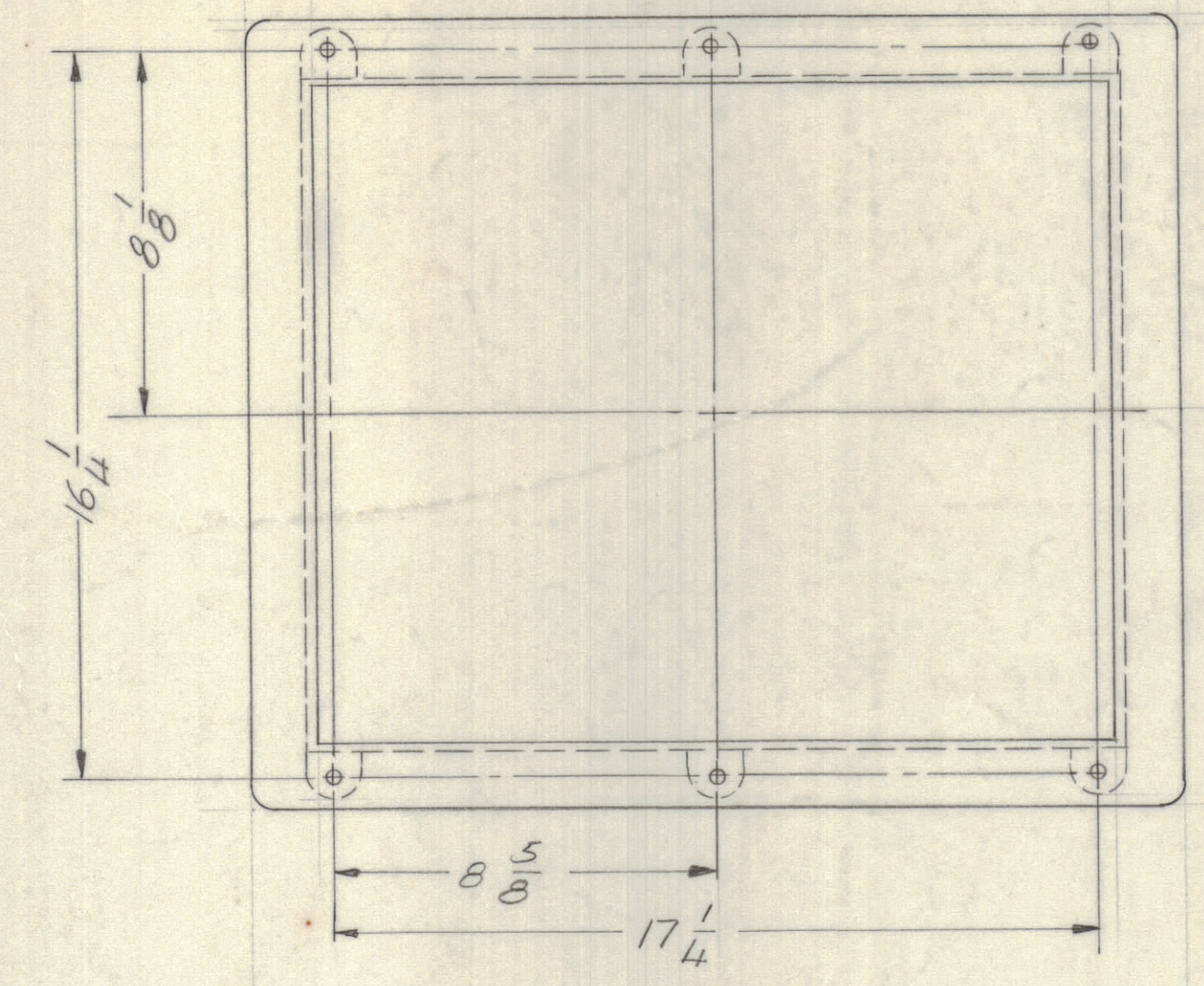
CASE GASKET CHANNEL DETAIL



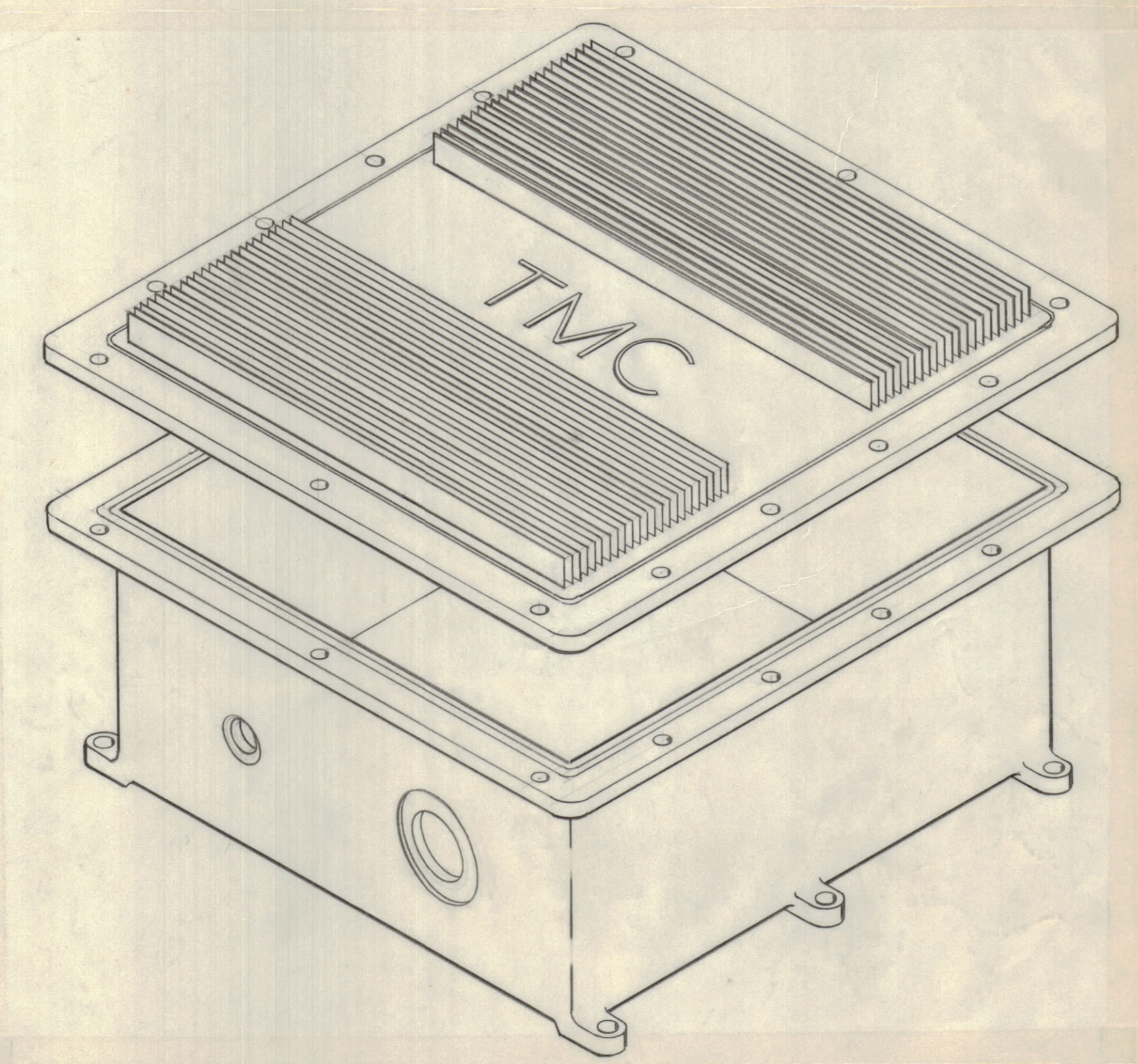
VIEW AA



GASKET SEATING DETAIL



MOUNTING DETAIL



- FINISH NOTES:
1. S404 - IRIDITE 14-2 AL-COAT.
  2. S114 - ZINC CHROMATE PRIMER
  3. S115 - SMOOTH GRAY ENAMEL

PAINT ALL SURFACES EXCEPT MACHINED AREAS

AX5176		
QTY / UNIT	MODEL USED ON	ASS'Y NO.
APPLICATION		
CODE		

NOTICE TO PERSONS RECEIVING THIS DRAWING  
 THE TECHNICAL MATERIEL CORPORATION claims proprietary right in the material disclosed hereon. This drawing is issued in confidence for engineering information only and may not be reproduced or used to manufacture anything shown hereon without permission from THE TECHNICAL MATERIEL CORPORATION to the user. This drawing is loaned for mutual assistance and is subject to recall at any time.

QTY. REQ.	ITEM	PART NO.	DESCRIPTION	SYMBOL
F. BUDETTI LIST OF MATERIAL				
THE TECHNICAL MATERIEL CORP. MAMARONECK, NEW YORK				
CASE, MACHINING				
MATERIAL ALUMINUM 356-T6			SIZE CODE IDENT NO. DWG NO.	ISSUE
FINISH AS NOTED			D 82679 PM1522	A
			SCALE 1/2	SHEET 2 OF 2