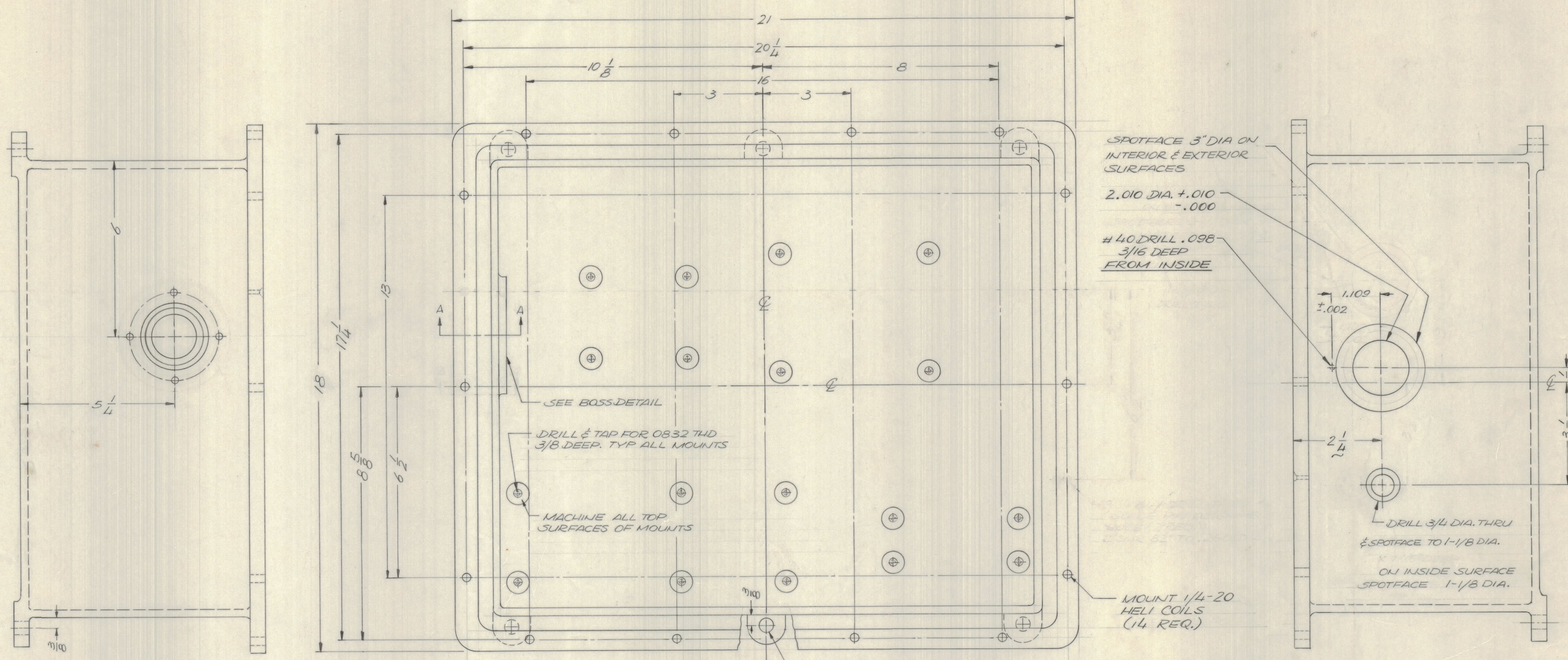


REVISIONS						
E.M.N.O.	DRAFT	CHKD	ZONE	LTR	DESCRIPTION	DATE
	GE			X	M/S CONN. PLUG HLE INCREASED TO 2.010 DIA. SPOTFACING ON BOTH SIDES INCREASE TO 3" DIA. ADD PILOT HLE (.098) DELE SPOTFACING ON BOTH SIDES FOR BOWL	3/7/73
	CE			X	HELL COILS ADD FOR COVER MTC. WAS HOLES ORIGINAL RELEASE FOR PRODUCTION	5/2/73
	DV					12/7/73
2131	GE	EJ		A	RIGHT SIDE VIEW 1/2 DIMENSION WAS 3/2	1/23/74



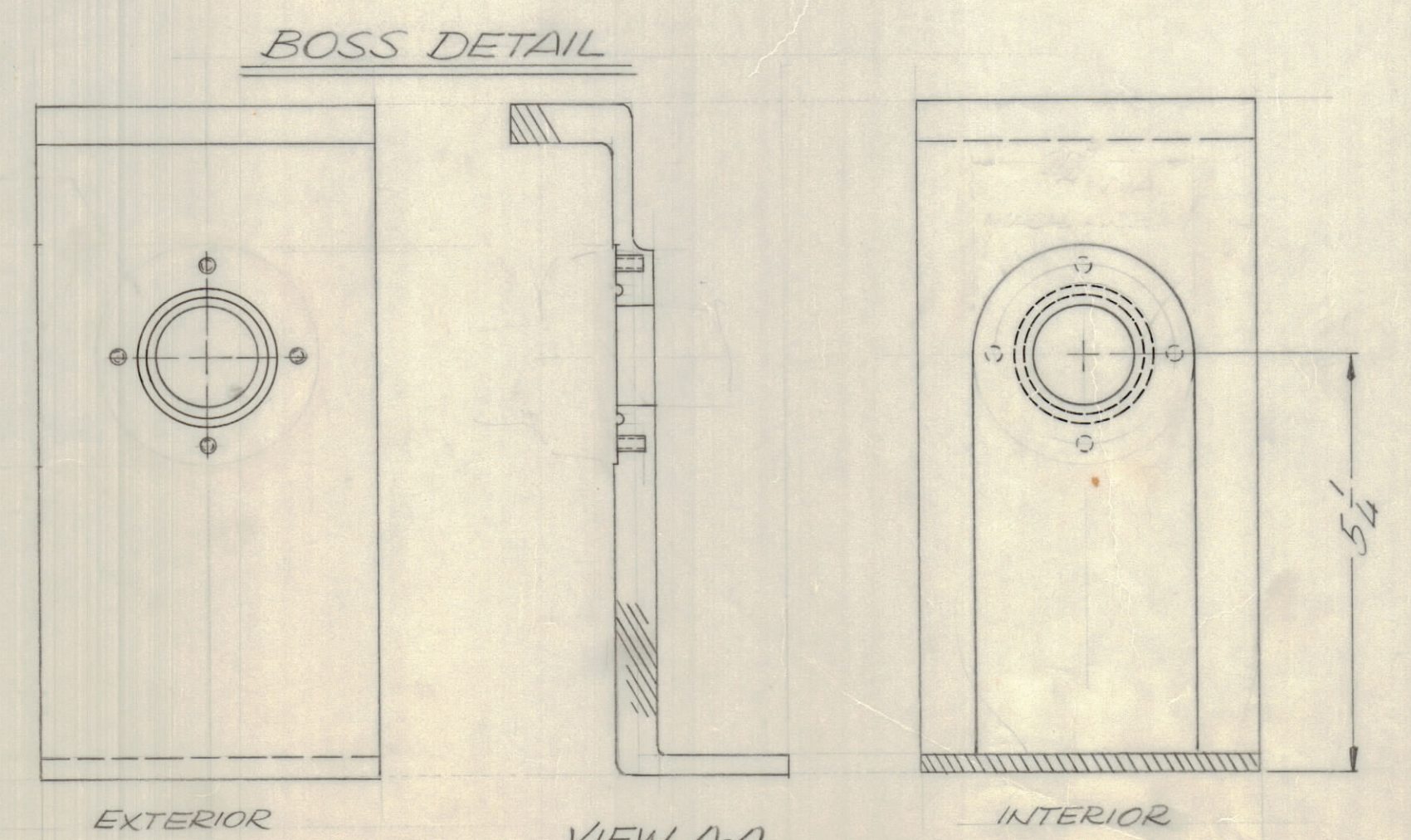
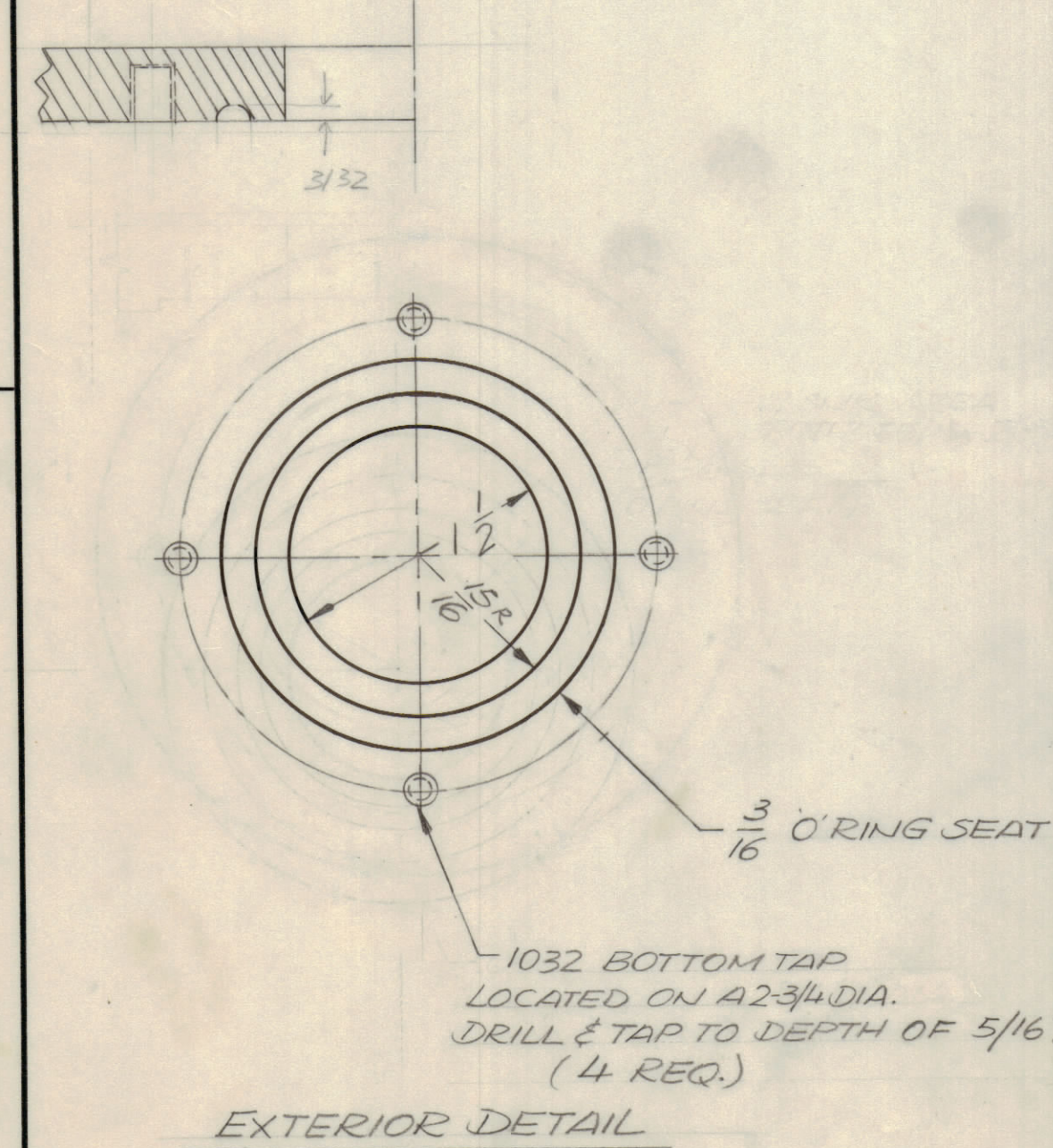
SPOTFACE 3" DIA ON INTERIOR & EXTERIOR SURFACES

2.010 DIA. +.010  
-.000

#40 DRILL .098  
3/16 DEEP  
FROM INSIDE

DRILL 3/4 DIA. THRU & SPOTFACE TO 1-1/8 DIA.  
ON INSIDE SURFACE  
SPOTFACE 1-1/8 DIA.

MOUNT 1/4-20  
HELL COILS  
(14 REQ.)



- FINISH NOTES:
- S404 - IRIDITE 14-2 AL-COAT.
  - S114 - ZINC CHROMATE PRIMER
  - S115 - SMOOTH GRAY ENAMEL

PAINT ALL SURFACES EXCEPT MACHINED AREAS.

QTY / UNIT	MODEL USED ON	ASSY NO.
AX5176		
APPLICATION		
CODE		

QTY. REQ.	ITEM	PART NO.	DESCRIPTION	SYMBOL
F. BUDETTI				
LIST OF MATERIAL				
UNLESS OTHERWISE SPECIFIED DIMENSIONS ARE IN INCHES AND INCLUDE CHEMICALLY APPLIED OR PLATED FINISHES				
TOLERANCES ON				
DECIMALS		FRACTIONS		
X ± .05		= 1/64		
XX ± .01		ANGLES		
XXX ± .005		= 0° -30'		
FINAL APPROVAL	DATE	THE TECHNICAL MATERIEL CORP.		
MECH. DES.	DATE	MAMARONECK, NEW YORK		
ELECT. DES.	DATE	CASE, MACHINING		
CHECKED	DATE	SIZE CODE IDENT NO. DWG NO.		
DRAWN	DATE	ISSUE		
GE	12/15/72	D	82679	PM1522
MATERIAL		SCALE 1/2		
FINISH		SHEET 1 OF 2		
AS NOTED				

NOTICE TO PERSONS RECEIVING THIS DRAWING  
THE TECHNICAL MATERIEL CORPORATION claims proprietary right in the material disclosed hereon. This drawing is issued in confidence for engineering information only and may not be reproduced or used to manufacture anything shown hereon without permission from THE TECHNICAL MATERIEL CORPORATION to the user. This drawing is loaned for mutual assistance and is subject to recall at any time.