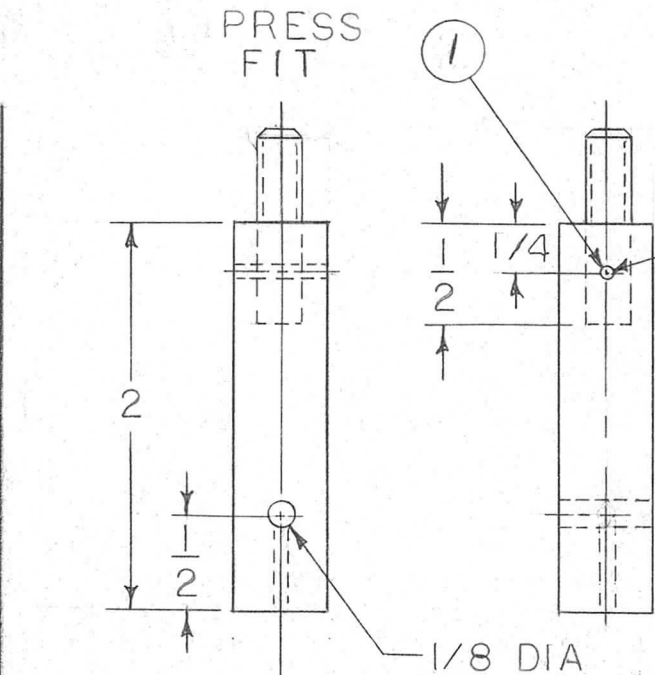
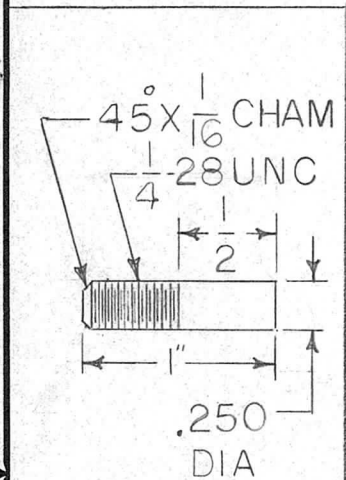
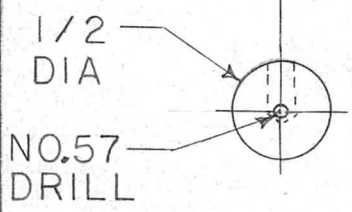


APPLICATION			REVISIONS						
QTY	MODEL USED ON	ASS'Y NO.	LTR	DESCRIPTION	DATE	E.M.N.NO	DRAFT	CHKD	APPD
1	TLAA-1K	AX5132	Ø	ORIG. RELEASE FOR PROD.	9/9/71		RG		
			Δ	ADD OBSOLETE NOTE	4/3/73	20907	GE	Ø	Ø



.062 DIA.
DRILL IN PLACE
& INSERT ITEM 1
AS SHOWN



**OBSOLETE
SUPERSEDED
REPLACED BY
PM1519**

REQ'D	ITEM	PART NUMBER	DESCRIPTION	SYM.
1	1	PN-99-062-8	PIN	

F. BUDETTI		LIST OF MATERIAL	
FINAL APPROVAL	<i>[Signature]</i>	DATE	9-9-71
MECH. DES.	A. PETROCCA	DATE	9-9-71
ELECT. DES.		DATE	
CHECKED		DATE	
DRAWN	<i>R. Forlano</i>	DATE	8-25-71

THE TECHNICAL MATERIEL CORP.
MAMARONECK, NEW YORK

SHAFT INS CAP

UNLESS OTHERWISE SPECIFIED
DIMENSIONS ARE IN INCHES
AND INCLUDE CHEMICALLY APPLIED
OR PLATED FINISHES

DECIMALS	FRACTIONS
.X ± .05	1/64
.XX ± .01	TOLS. ANGLES
.XXX ± .005	0° -30°

MATERIAL G11

FINISH

NOTICE TO PERSONS RECEIVING THIS DRAWING			
THE TECHNICAL MATERIEL CORPORATION claims proprietary right in the material disclosed hereon. This drawing is issued in confidence for engineering information only and may not be reproduced or used to manufacture anything shown hereon without permission from THE TECHNICAL MATERIEL CORPORATION to the user. This drawing is loaned for mutual assistance and is subject to recall at any time.			
SIZE	CODE IDENT. NO.	DWG NO.	ISSUE
A	82679	PM 1508	A
SCALE		SHEET	OF