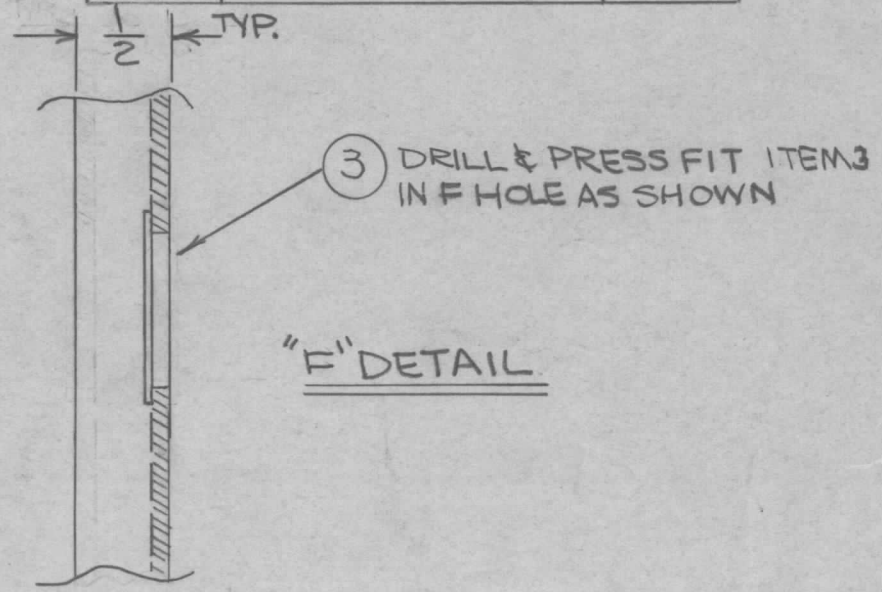


REVISIONS							
ZONE	LTR	DESCRIPTION	DATE	E.M.N.NO	DRAFT	CHKD	APPD
	Ø	ORIG. REL. FOR PROD.	5-22-69		BE	WR	
A		2" C HOLES RELOC, 30° DIM DELE	1/27/70	19738	CH	RT	RT
B		"G" HOLE ADD	2-13-79	21694	GDL		QQ

HOLE	DESCRIPTION	REQ.
A	9/64 DIA.	1
B	.161 - .164 DIA.	3
C	.191 - .194 DIA.	4
D	15/64 DIA.	4
E	1 1/2 DIA.	1
F	SEE DETAIL	1
G	5/16 DIA	1



REQ'D	ITEM	PART NUMBER	DESCRIPTION	SYM.
1	3	BB126-16	BEARING, BALL	F
3	2	NT129-0440-G	NUT, PLAIN, SPLINE TYPE	B
4	1	NT129-0632-G	NUT, PLAIN, SPLINE TYPE	C

LIST OF MATERIAL

QTY / UNIT	MODEL USED ON	ASS'Y NO.
1	HFTA-10K/125 PALA-10K	AS 145
APPLICATION		
CODE		

UNLESS OTHERWISE SPECIFIED DIMENSIONS ARE IN INCHES AND INCLUDE CHEMICALLY APPLIED OR PLATED FINISHES

DECIMALS: .X ± .05, .XX ± .01, .XXX ± .005  
FRACTIONS: 1/64, ANGLES: 0° - 30'

MATERIAL: 1/8 ALUM. 5052 H32  
FINISH: S404 YEL. IRIDITE

FINAL APPROVAL: *ALP. WR* DATE: 1-9-70  
MECH. DES. DATE: *1/9/70*  
ELECT. DES. DATE:  
CHECKED DATE:  
DRAWN: A. PETROCCA DATE:

THE TECHNICAL MATERIEL CORP.  
MAMARONECK, NEW YORK

PLATE, BOTTOM, GEARBOX BAND SW.

SIZE	CODE IDENT. NO.	DWG NO.	ISSUE
B	82679	PM1402	B.

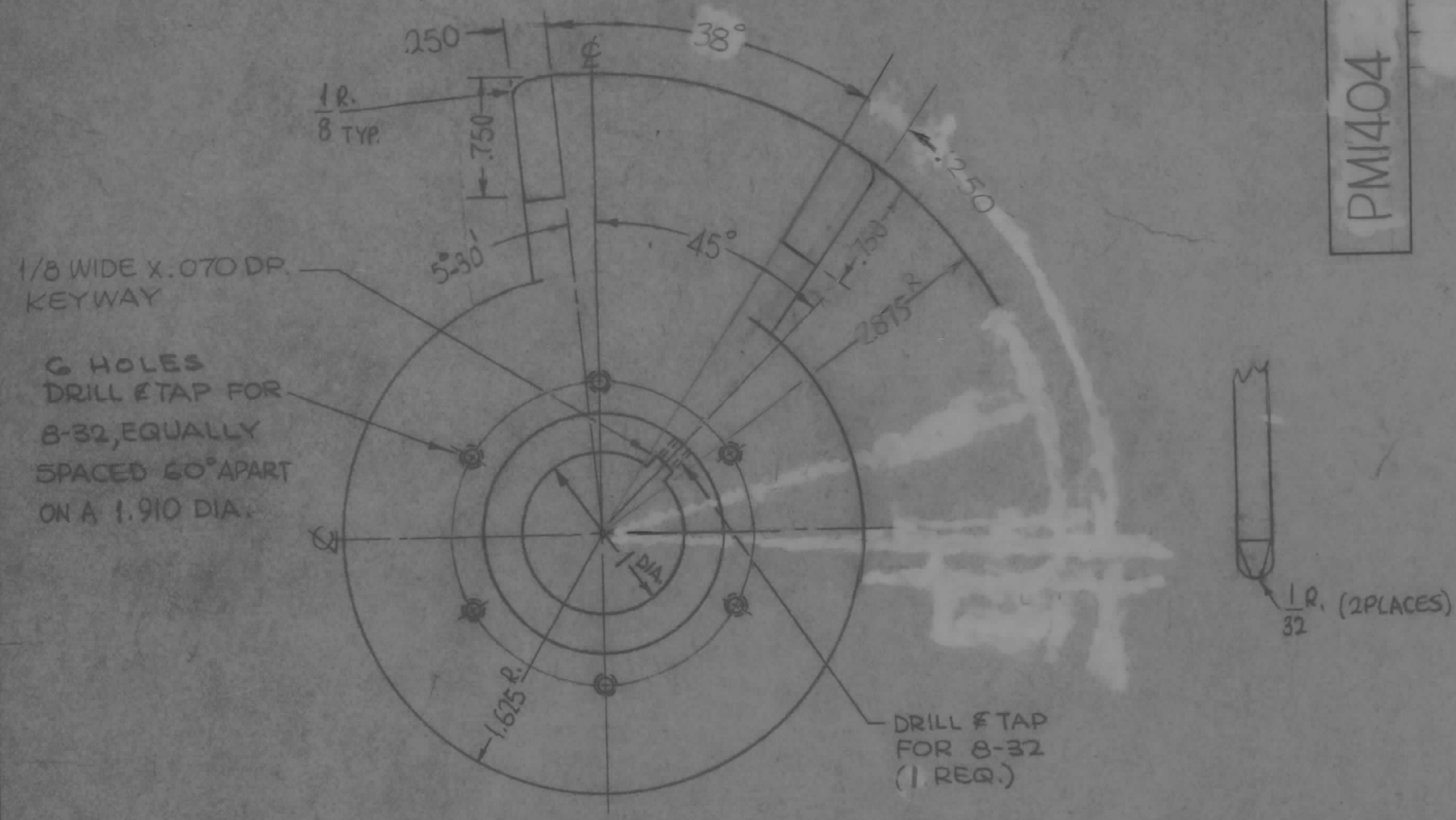
SCALE: SHEET OF

NOTICE TO PERSONS RECEIVING THIS DRAWING  
THE TECHNICAL MATERIEL CORPORATION claims proprietary right in the material disclosed hereon. This drawing is issued in confidence for engineering information only and may not be reproduced or used to manufacture anything shown hereon without permission from THE TECHNICAL MATERIEL CORPORATION to the user. This drawing is loaned for mutual assistance and is subject to recall at any time.

REVISIONS

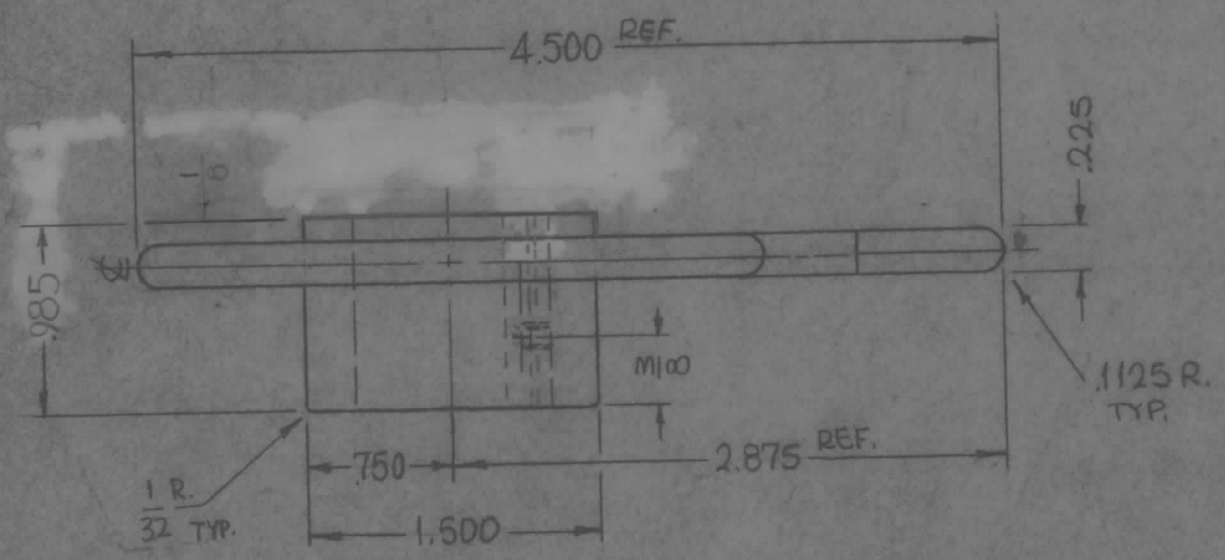
SYM	DESCRIPTION	DATE	E.M.N. NO.	DRAFT	CHKD	APPD
Ø	ORIGINAL RELEASE FOR PRODUCTION	5/8/69			<i>me</i>	

PMI404



1/8 WIDE X .070 DP. KEYWAY  
 6 HOLES DRILL & TAP FOR 8-32, EQUALLY SPACED 60° APART ON A 1.910 DIA.

DRILL & TAP FOR 8-32 (1 REQ.)



NOTE: POLISH SMOOTH ALL SURFACES.

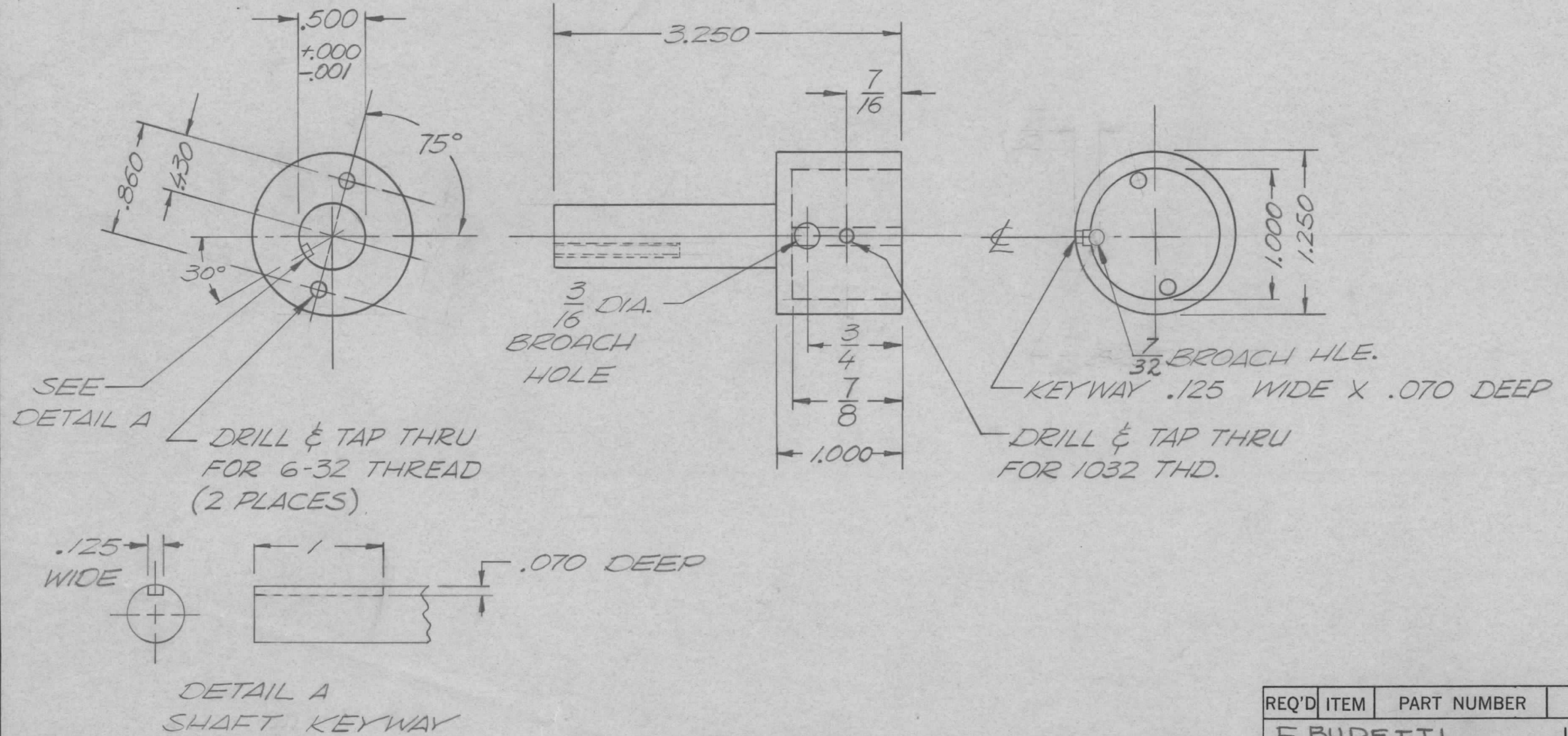
REQ'D.	ITEM	PART NUMBER	DESCRIPTION	SYMBOL
F. BUDETTI LIST OF MATERIAL				
MATERIAL			THE TECHNICAL MATERIEL CORP. MAMARONECK, NEW YORK	
FINISH			TITLE	
S 245 SILVER PLATE S 423 IRIDITE 18-P SILVER-KOTE			ROTOR, BANDSWITCH	
DRAWN		DATE	FINAL APPROVAL	
SRG			<i>SRG</i>	
CHECKED		DATE		
<i>me ALP</i>				
ELECT. DES.		DATE	SHEET	
ALP			PMI404	
MECH. DES.		DATE	REV. LTR.	

QTY./UNIT	MODEL USED ON	ASSY. NO.
1	FALA-10K	AS145
SCALE	CODE	
1:1	A	

THE CONTENTS OF THIS DRAWING ARE THE EXCLUSIVE PROPERTY OF THE TECHNICAL MATERIEL CORP. ITS UNAUTHORIZED USE OR REPRODUCTION IN WHOLE OR IN PART IS STRICTLY FORBIDDEN.

NOTES

REVISIONS							
ZONE	LTR	DESCRIPTION	DATE	E.M.N.NO	DRAFT	CHKD	APPD
	Ø	ORIG. REL. FOG PROD	10/29/69		GE	ALP	
	A	ADD KEYWAY DET.	5/19/70	19872	GE	FB	FB



1	PALA 10K	AS 145
QTY / UNIT	MODEL USED ON	ASS'Y NO.
APPLICATION		
CODE		

**NOTICE TO PERSONS RECEIVING THIS DRAWING**  
 THE TECHNICAL MATERIEL CORPORATION claims proprietary right in the material disclosed hereon. This drawing is issued in confidence for engineering information only and may not be reproduced or used to manufacture anything shown hereon without permission from THE TECHNICAL MATERIEL CORPORATION to the user. This drawing is loaned for mutual assistance and is subject to recall at any time.

UNLESS OTHERWISE SPECIFIED  
 DIMENSIONS ARE IN INCHES  
 AND INCLUDE CHEMICALLY APPLIED  
 OR PLATED FINISHES

DECIMALS .X ± .05  
 .XX ± .01  
 .XXX ± .005

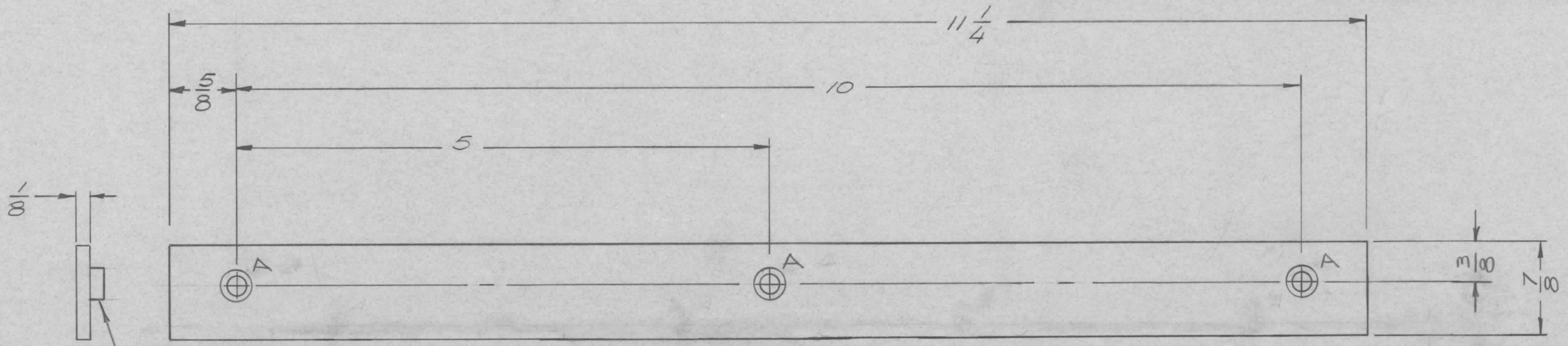
FRACTIONS 1/64  
 ANGLES 0° .30'

MATERIAL # 303  
 ST. STEEL

FINISH

REQ'D	ITEM	PART NUMBER	DESCRIPTION	SYM.
F. BUDETTI LIST OF MATERIAL				
FINAL APPROVAL		DATE	THE TECHNICAL MATERIEL CORP.	
MECH. DES.		DATE	MAMARONECK, NEW YORK	
ELECT. DES.		DATE	HUB, BANDSWITCH	
CHECKED		DATE	SIZE	CODE IDENT. NO.
DRAWN		DATE	B	82679
			DWG NO.	PM1405
			ISSUE	A
SCALE NTS			SHEET	OF

REVISIONS						
ZONE	LTR	DESCRIPTION	DATE	E.M.N.NO	DRAFT	CHKD APPD
	Ø	ORIGINAL RELEASE	122969		GE	



1 MOUNT IN ALL "A" HOLES AS SHOWN.

HOLE	DESCRIPTION	REQ.
A	.221-.224 DIA.	3

REQ'D	ITEM	PART NUMBER	DESCRIPTION	SYM.
3	1	NT129-0832-6	NUT, ROUND, SPLINE TYPE	A

F. BUDETTI LIST OF MATERIAL

THE TECHNICAL MATERIEL CORP.  
MAMARONECK, NEW YORK

STRIP, SERVO MT.

FINAL APPROVAL	DATE	MECH. DES.	DATE	ELECT. DES.	DATE	CHECKED	DATE	DRAWN	DATE
<i>[Signature]</i>	1-70	ALP. <i>[Signature]</i>	1-70	AGC	1-70			ALP.	122969

SIZE	CODE IDENT. NO.	DWG NO.	ISSUE
B	82679	PM1412	Ø

SCALE SHEET OF

1	PALAIOK	AX5080
QTY / UNIT	MODEL USED ON	ASS'Y NO.
APPLICATION		
CODE		

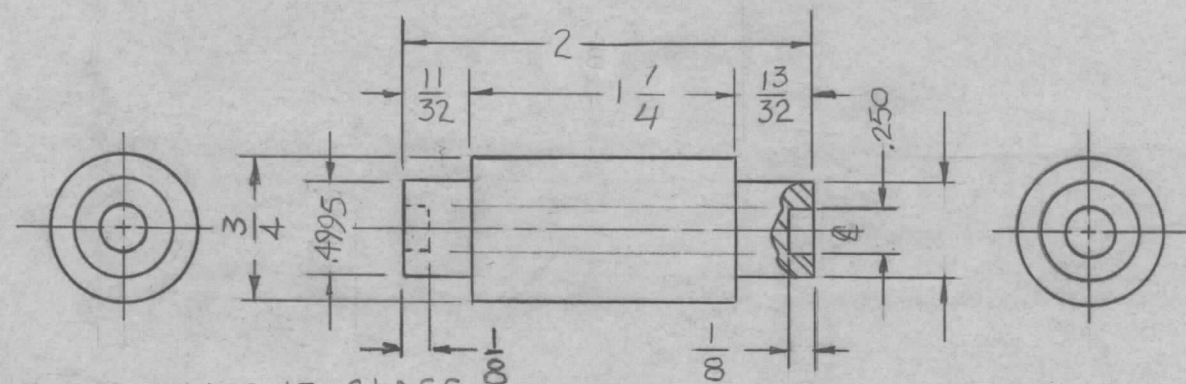
NOTICE TO PERSONS RECEIVING THIS DRAWING  
THE TECHNICAL MATERIEL CORPORATION claims proprietary right in the material disclosed hereon. This drawing is issued in confidence for engineering information only and may not be reproduced or used to manufacture anything shown hereon without permission from THE TECHNICAL MATERIEL CORPORATION to the user. This drawing is loaned for mutual assistance and is subject to recall at any time.

UNLESS OTHERWISE SPECIFIED DIMENSIONS ARE IN INCHES AND INCLUDE CHEMICALLY APPLIED OR PLATED FINISHES

DECIMALS	FRACTIONS
.X ± .05	1/64
.XX ± .01	TOLS. ANGLES
.XXX ± .005	0° -30'

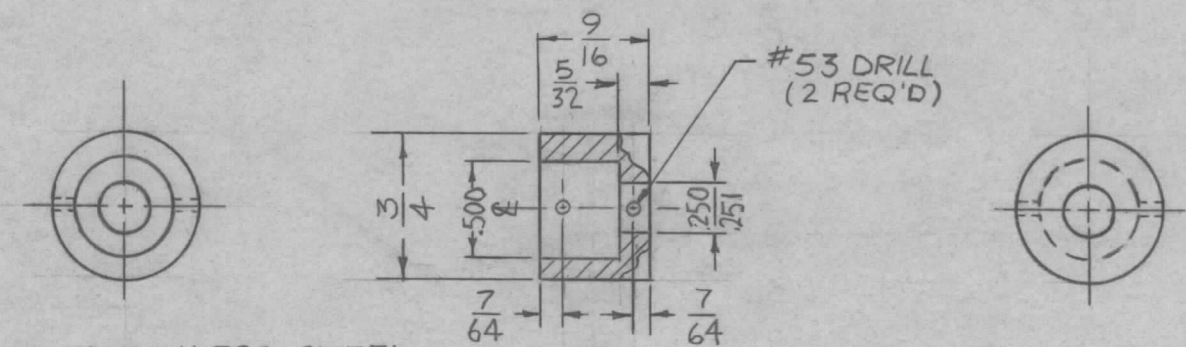
MATERIAL 1/8 THK.  
ALUM. 2024-T3  
FINISH S404  
YEL. IRIDITE





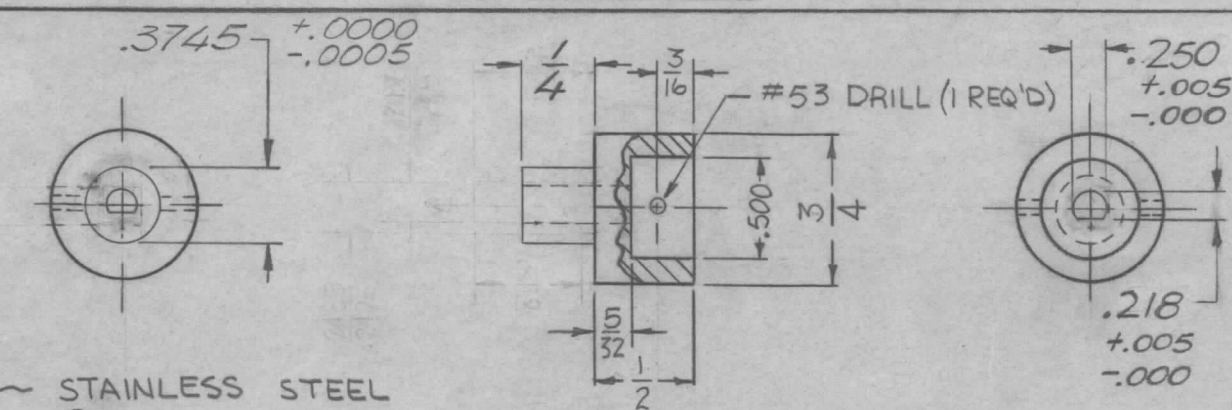
MATERIAL - G7 SILICONE GLASS

DETAIL "A"



MATERIAL - STAINLESS STEEL 303

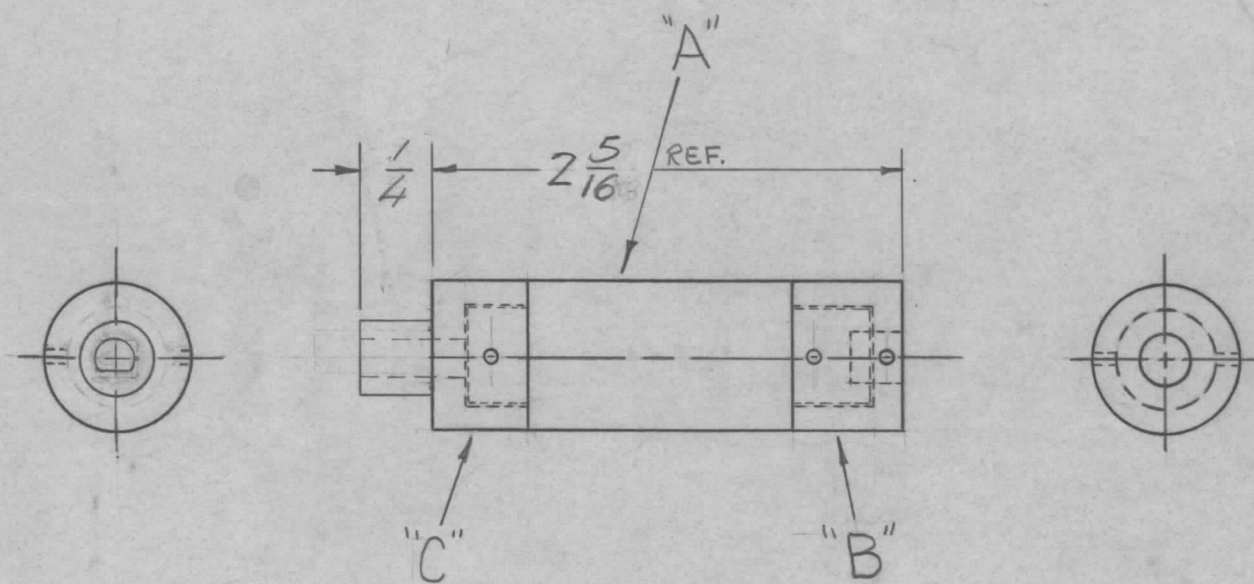
DETAIL "B"



MATERIAL - STAINLESS STEEL 303

DETAIL "C"

REVISIONS							
ZONE	LTR	DESCRIPTION	DATE	E.M.N.NO	DRAFT	CHKD	APPD
	Ø	ORIG. RELEASE	1/27/70		GE		
	A	C'DET. DIM 1/4 WAS 3/8	5/19/70		GE		
	B	OVERALL LEN. CHG WAS 2 3/8	3/21/72	20567	GE	EL	EL



NOTE: ASSEMBLE "A", "B" & "C" WITH ITEM 1, PRESS-FITTING AND PIN WITH ITEM 2.

REQ'D	ITEM	PART NUMBER	DESCRIPTION	SYM.
3	2	PN-59.062-12	PIN SPLINE	
	1	GL 125	ADHESIVE EPOXY	

F. BUDETTI LIST OF MATERIAL

1	HFLA-10K	AX5114
1	PALA-10K	AX5084
QTY / UNIT	MODEL USED ON	ASS'Y NO.
APPLICATION		
CODE		

NOTICE TO PERSONS RECEIVING THIS DRAWING  
 THE TECHNICAL MATERIEL CORPORATION claims proprietary right in the material disclosed hereon. This drawing is issued in confidence for engineering information only and may not be reproduced or used to manufacture anything shown hereon without permission from THE TECHNICAL MATERIEL CORPORATION to the user. This drawing is loaned for mutual assistance and is subject to recall at any time.

UNLESS OTHERWISE SPECIFIED DIMENSIONS ARE IN INCHES AND INCLUDE CHEMICALLY APPLIED OR PLATED FINISHES

DECIMALS	FRACTIONS	TOLS.
.X ± .05	1/64	
.XX ± .01	ANGLES	
.XXX ± .005	0° .30'	

MATERIAL  
FINISH

FINAL APPROVAL	DATE
MECH. DES.	DATE
ELECT. DES.	DATE
CHECKED	DATE
DRAWN	DATE

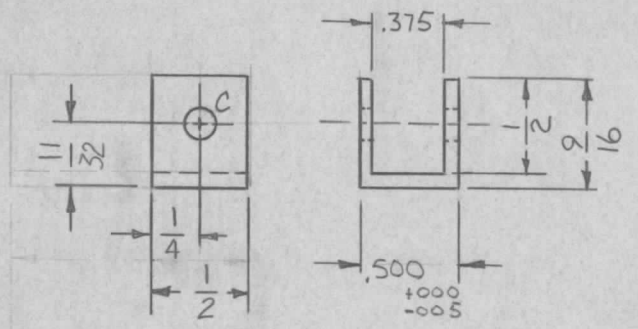
THE TECHNICAL MATERIEL CORP.  
MAMARONECK, NEW YORK

SHAFT, CAPACITOR

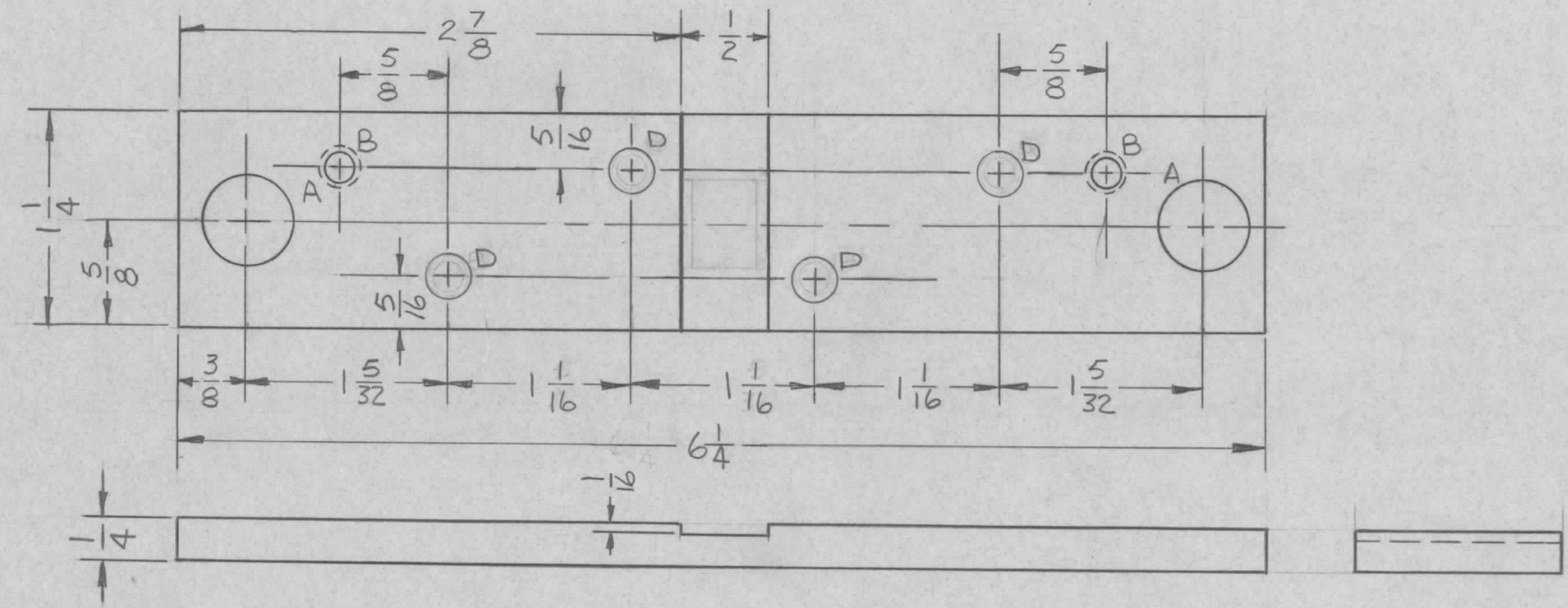
SIZE	CODE IDENT. NO.	DWG NO.	ISSUE
B	82679	PM 1417	B

SCALE NTS SHEET OF

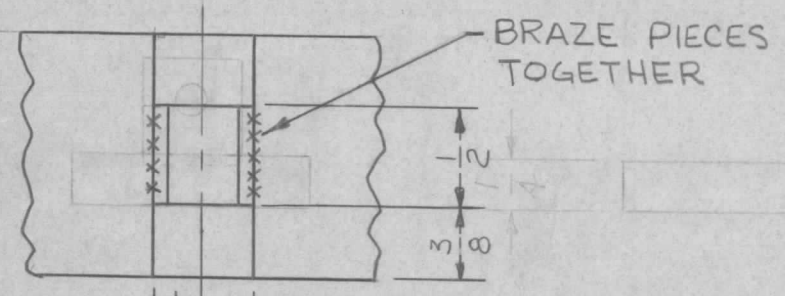
REVISIONS						
ZONE	LTR	DESCRIPTION	DATE	E.M.N.NO	DRAFT	CHKD APPD
	Ø	ORIGINAL RELEASE FOR PRODUCTION	4/31/69			me



DETAIL "A"



HOLE	DESCRIPTION	REQ'D
A	1/2 DIA.	2
B	DRILL & TAP FOR 1032 (THRU)	2
C	11/32 DIA (THRU BOTH SIDES)	1
D	17/64 DIA.	4



DETAIL "B"

1	PALA-10K	AP48
QTY / UNIT	MODEL USED ON	ASS'Y NO.

APPLICATION	
CODE	

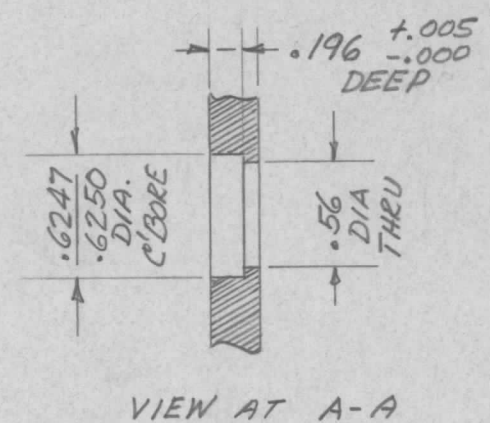
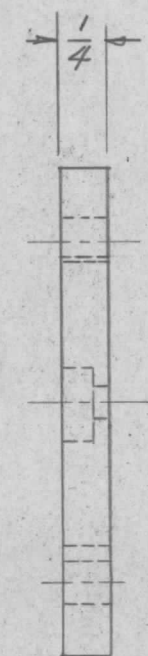
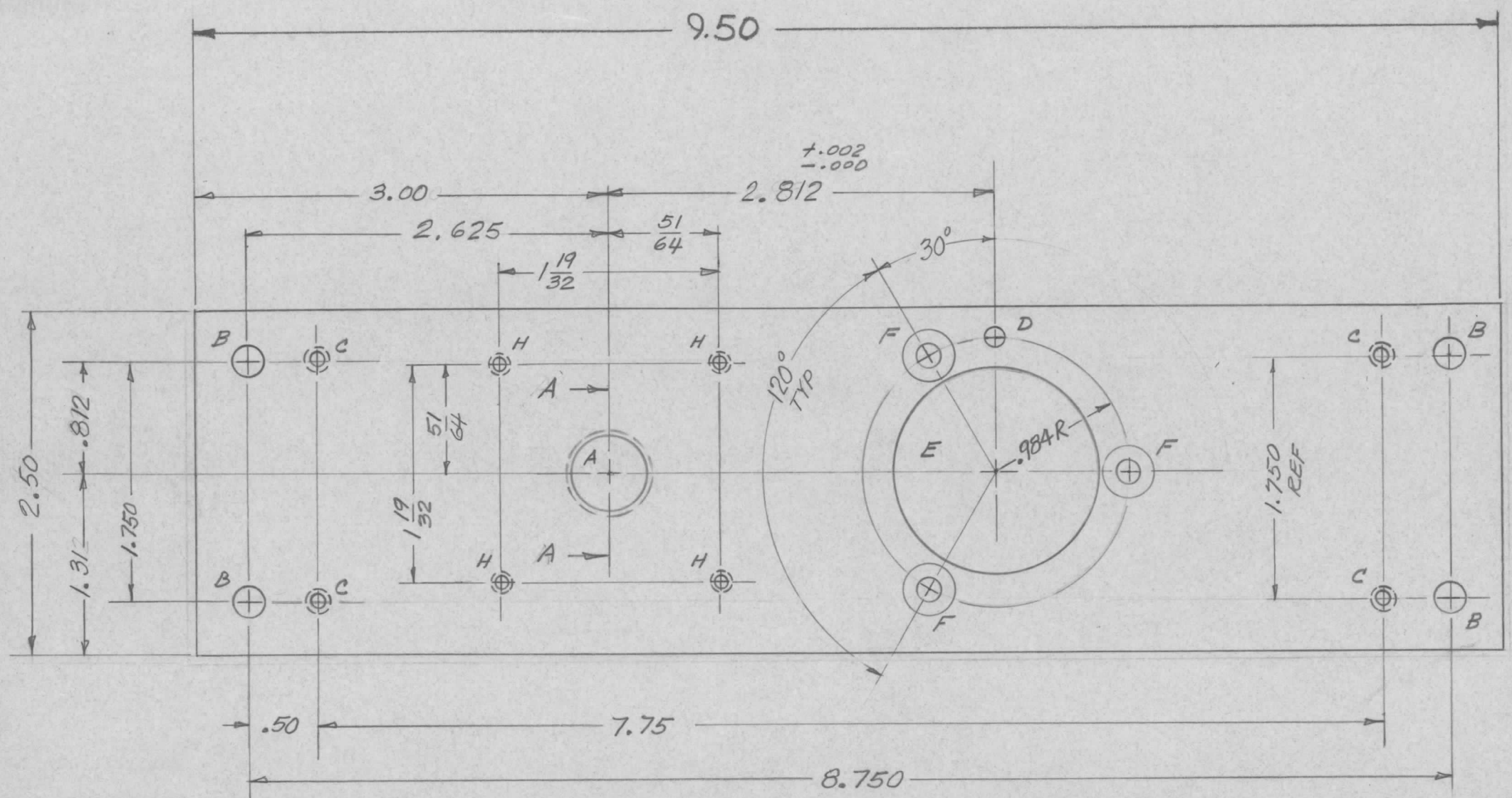
**NOTICE TO PERSONS RECEIVING THIS DRAWING**  
 THE TECHNICAL MATERIEL CORPORATION claims proprietary right in the material disclosed hereon. This drawing is issued in confidence for engineering information only and may not be reproduced or used to manufacture anything shown hereon without permission from THE TECHNICAL MATERIEL CORPORATION to the user. This drawing is loaned for mutual assistance and is subject to recall at any time.

UNLESS OTHERWISE SPECIFIED DIMENSIONS ARE IN INCHES AND INCLUDE CHEMICALLY APPLIED OR PLATED FINISHES

DECIMALS .X ± .05 .XX ± .01 .XXX ± .005	FRACTIONS TOLS. 1/64 ANGLES 0° .30'
MATERIAL H-H BRASS	
FINISH S135 BRIGHTNI-PL	

REQ'D	ITEM	PART NUMBER	DESCRIPTION	SYM.
F BUDETTI LIST OF MATERIAL				
THE TECHNICAL MATERIEL CORP. MAMARONECK, NEW YORK				
BAR, SHORTING				
SIZE	CODE IDENT. NO.	DWG NO.	ISSUE	
B	82679	PM 1418	Ø	
SCALE NOT TO SCALE			SHEET OF	

REVISIONS						
ZONE	LTR	DESCRIPTION	DATE	E.M.N.NO	DRAFT	CHKD APPD
	X	EXPER RELEASE			JA.	
	Ø	ORIGINAL RELEASE	5/4/73		CS	



**NOTE:**  
 .171 DIA HOLE C'BORE  $\frac{11}{32}$  DIA X  $\frac{5}{32}$  DEEP  
 (3 HOLES ON .984 RADIUS)

HOLE	DESCRIPTION	REQ'D.
A	AS SHOWN AT VIEW A-A	1
B	7/32 DIA	4
C	DRILL & TAP FOR 8-32 SCR.	4
D	.128 DIA.	1
E	1.5005 TO 1.5010 DIA	1
F	SEE NOTE	3
H	DRILL & TAP FOR 6-32 SCR.	4

1	GPTR 10K ( )	AF 109
QTY / UNIT	MODEL USED ON	ASS'Y NO.
APPLICATION		
CODE		

**NOTICE TO PERSONS RECEIVING THIS DRAWING**  
 THE TECHNICAL MATERIEL CORPORATION claims proprietary right in the material disclosed hereon. This drawing is issued in confidence for engineering information only and may not be reproduced or used to manufacture anything shown hereon without permission from THE TECHNICAL MATERIEL CORPORATION to the user. This drawing is loaned for mutual assistance and is subject to recall at any time.

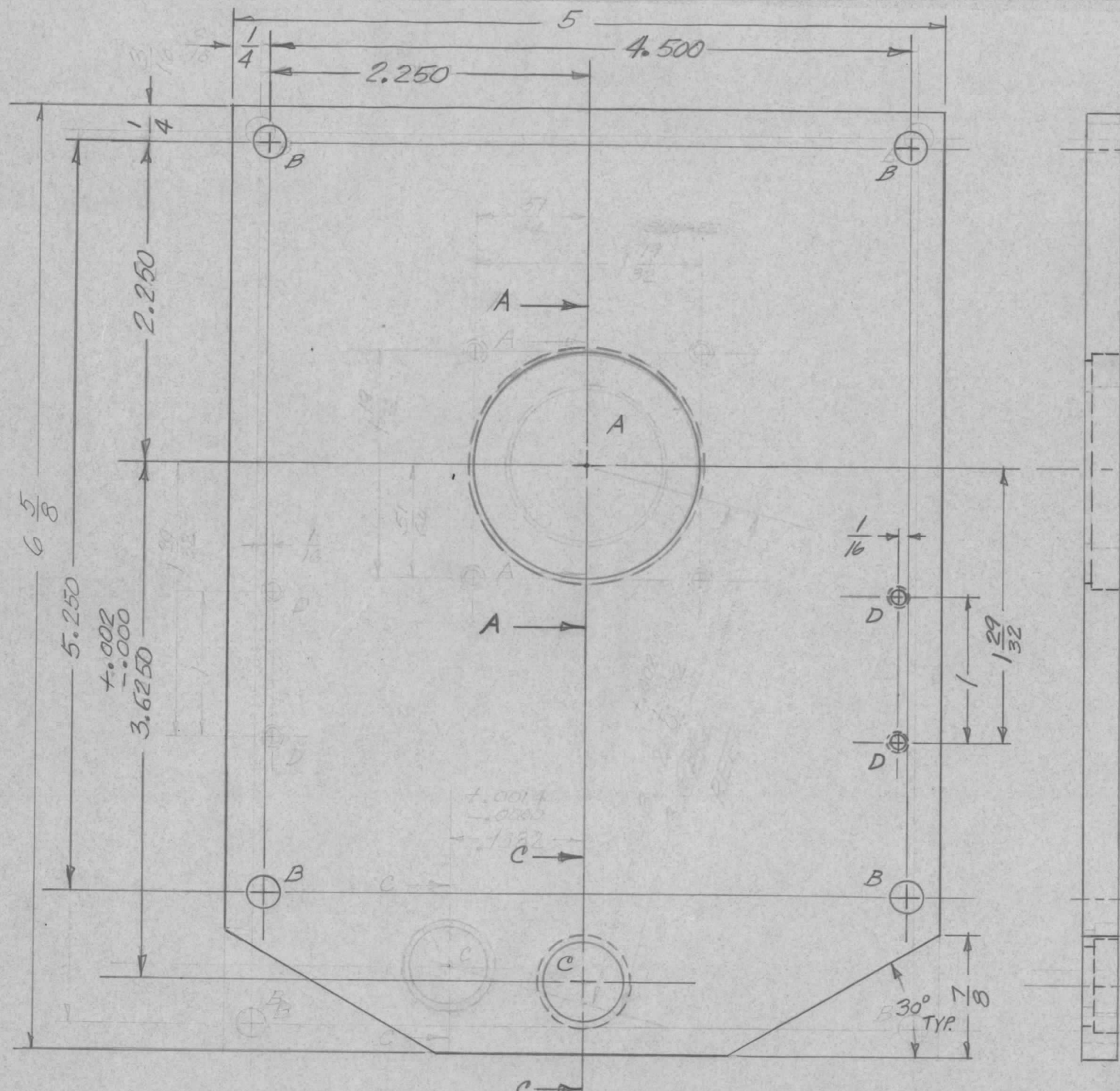
UNLESS OTHERWISE SPECIFIED DIMENSIONS ARE IN INCHES AND INCLUDE CHEMICALLY APPLIED OR PLATED FINISHES

DECIMALS	FRACTIONS
.X ± .05	1/64
.XX ± .01	TOLS. ANGLES
.XXX ± .005	0° - 30'

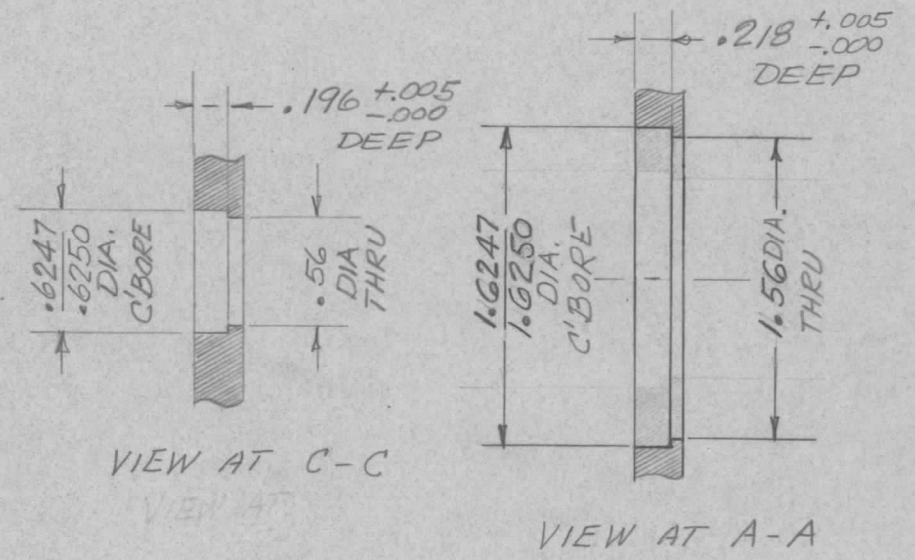
MATERIAL 2024-T3  
 1/4 THK. ALUMINUM  
 FINISH S404  
 YELLOW IRIDITE

REQ'D	ITEM	PART NUMBER	DESCRIPTION	SYM.
LIST OF MATERIAL				
THE TECHNICAL MATERIEL CORP. MAMARONECK, NEW YORK				
PANEL, MOTOR MOUNTING				
FINAL APPROVAL	J. ANGER	DATE	6/9/69	
MECH. DES.	J. ANGER	DATE	6/9/69	
ELECT. DES.		DATE		
CHECKED		DATE		
DRAWN	J. ANGER	DATE	6/9/69	
SIZE	B	CODE IDENT. NO.	82679	DWG NO.
				PM1422
SCALE	1:1	SHEET 1 OF 1		ISSUE





REVISIONS						
ZONE	LTR	DESCRIPTION	DATE	E.M.N.NO	DRAFT	CHKD APPD
	X	EXPER RELEASE			JA	
	X1	1/4" DIMS. ADDED	8/6/69		JA	
	X2	"D" HOLES ADDED	10/2/69		JA	
	Ø	ORIGINAL RELEASE	5/4/73		CS	



HOLE	DESCRIPTION	REQ'D
A	AS SHOWN AT VIEW A-A	1
B	13/64 DIA.	4
C	AS SHOWN AT VIEW C-C	1
D	DRILL & TAP 4-40 SCR.	2

1	GPTR 10K ( )	AF109
QTY / UNIT	MODEL USED ON	ASS'Y NO.
APPLICATION		
	CODE	

**NOTICE TO PERSONS RECEIVING THIS DRAWING**  
 THE TECHNICAL MATERIEL CORPORATION claims proprietary right in the material disclosed hereon. This drawing is issued in confidence for engineering information only and may not be reproduced or used to manufacture anything shown hereon without permission from THE TECHNICAL MATERIEL CORPORATION to the user. This drawing is loaned for mutual assistance and is subject to recall at any time.

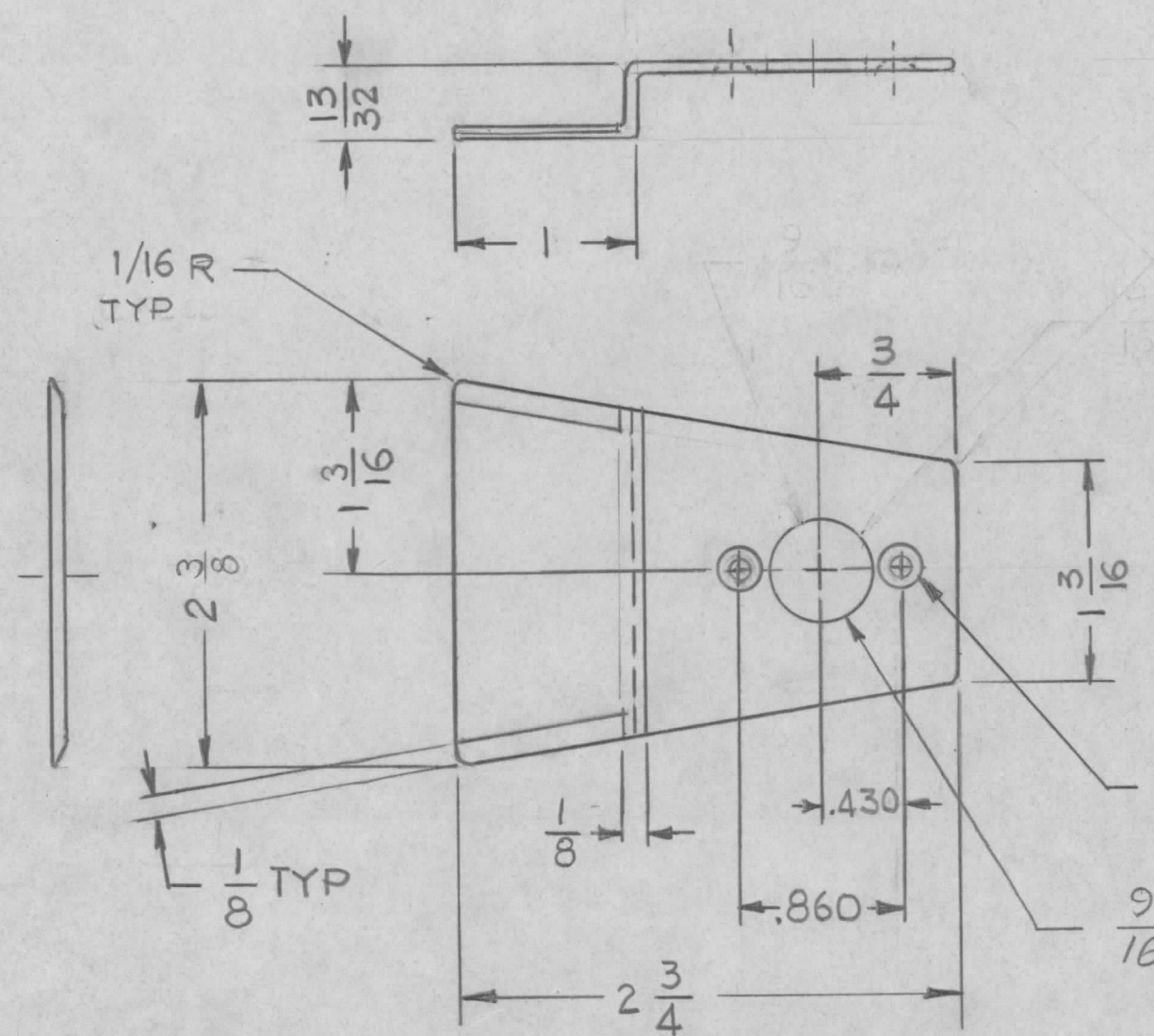
UNLESS OTHERWISE SPECIFIED DIMENSIONS ARE IN INCHES AND INCLUDE CHEMICALLY APPLIED OR PLATED FINISHES

DECIMALS: .X ± .05, .XX ± .01, .XXX ± .005  
 FRACTIONS: 1/64, ANGLES: 0° -30'

MATERIAL: 1/4 THK. ALUMINUM 2024-T3  
 FINISH: 5404 YELLOW IRIDITE

REQ'D	ITEM	PART NUMBER	DESCRIPTION	SYM.
LIST OF MATERIAL				
THE TECHNICAL MATERIEL CORP. MAMARONECK, NEW YORK				
PLATE, GEAR MTG.				
SIZE	CODE IDENT. NO.	DWG NO.	ISSUE	
B	82679	PM1423	Ø	
SCALE	1:1	SHEET	OF	

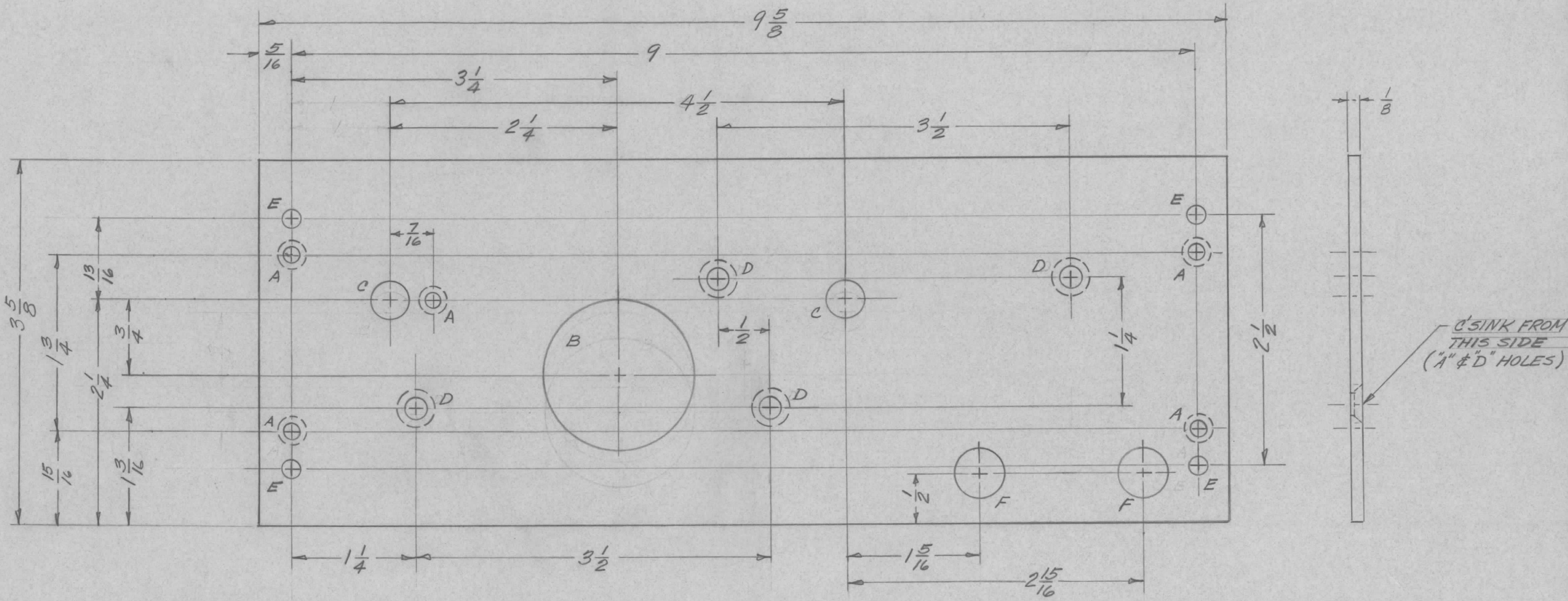
REVISIONS							
EM.N.NO.	DRAFT	CHKD	ZONE	LTR	DESCRIPTION	DATE	APPROVED
21161	GDL	EP		B	COMPLETE REVISED & REDRAWN	4-1-74	EJ
21490	yea	RU		C	CHANGE 2 DIMENSIONS TO 2 3/8 AND 1 3/16	5-24-74	S.D.



NOTE:  
BREAK ALL EDGES

REQ'D	ITEM	PART NUMBER	DESCRIPTION	SYM.
LIST OF MATERIAL				
<b>THE TECHNICAL MATERIEL CORP.</b> MAMARONECK, NEW YORK				
ROTOR, SHORTING "L" SEC				
UNLESS OTHERWISE SPECIFIED DIMENSIONS ARE IN INCHES AND INCLUDE CHEMICALLY APPLIED OR PLATED FINISHES		FINAL APPROVAL <i>G. DeLuna</i>	DATE 4/1/74	
DECIMALS .X ± .05 .XX ± .01 .XXX ± .005		FRACTIONS 1/64 ANGLES 0° -30'	ELECT. DES.	DATE
MATERIAL .064 THK ALUM. 5052-H32		CHECKED	DATE	
FINISH S404 YEL IRIDITE		DRAWN <i>G. DeLuna</i>	DATE	
1	PALA-10K	AS145	SIZE B	ISSUE C
QTY / UNIT	MODEL USED ON	ASS'Y NO.	CODE IDENT. NO. 82679	DWG NO. PM1430
APPLICATION			SCALE 1/1	SHEET OF
<p><b>NOTICE TO PERSONS RECEIVING THIS DRAWING</b>          THE TECHNICAL MATERIEL CORPORATION claims proprietary right in the material disclosed hereon. This drawing is issued in confidence for engineering information only and may not be reproduced or used to manufacture anything shown hereon without permission from THE TECHNICAL MATERIEL CORPORATION to the user. This drawing is loaned for mutual assistance and is subject to recall at any time.</p>				

REVISIONS							
ZONE	LTR	DESCRIPTION	DATE	E.M.N.NO	DRAFT	CHKD	APPD
		Ø ORIGINAL RELEASE	5/4/73		CS		



HOLE	DESCRIPTION	REQ'D
A	5/32 DIA. 82° C'SINK TO 9/32 DIA.	5
B	1 1/2 DIA.	1
C	3/8 DIA.	2
D	7/32 DIA. 82° C'SINK TO 25/64 DIA.	4
E	3/16 DIA.	4
F	1/2 DIA.	2

QTY / UNIT	MODEL USED ON	ASS'Y NO.
1	GPTR10K	AF109
APPLICATION		
	CODE	

**NOTICE TO PERSONS RECEIVING THIS DRAWING**  
 THE TECHNICAL MATERIEL CORPORATION claims proprietary right in the material disclosed hereon. This drawing is issued in confidence for engineering information only and may not be reproduced or used to manufacture anything shown hereon without permission from THE TECHNICAL MATERIEL CORPORATION to the user. This drawing is loaned for mutual assistance and is subject to recall at any time.

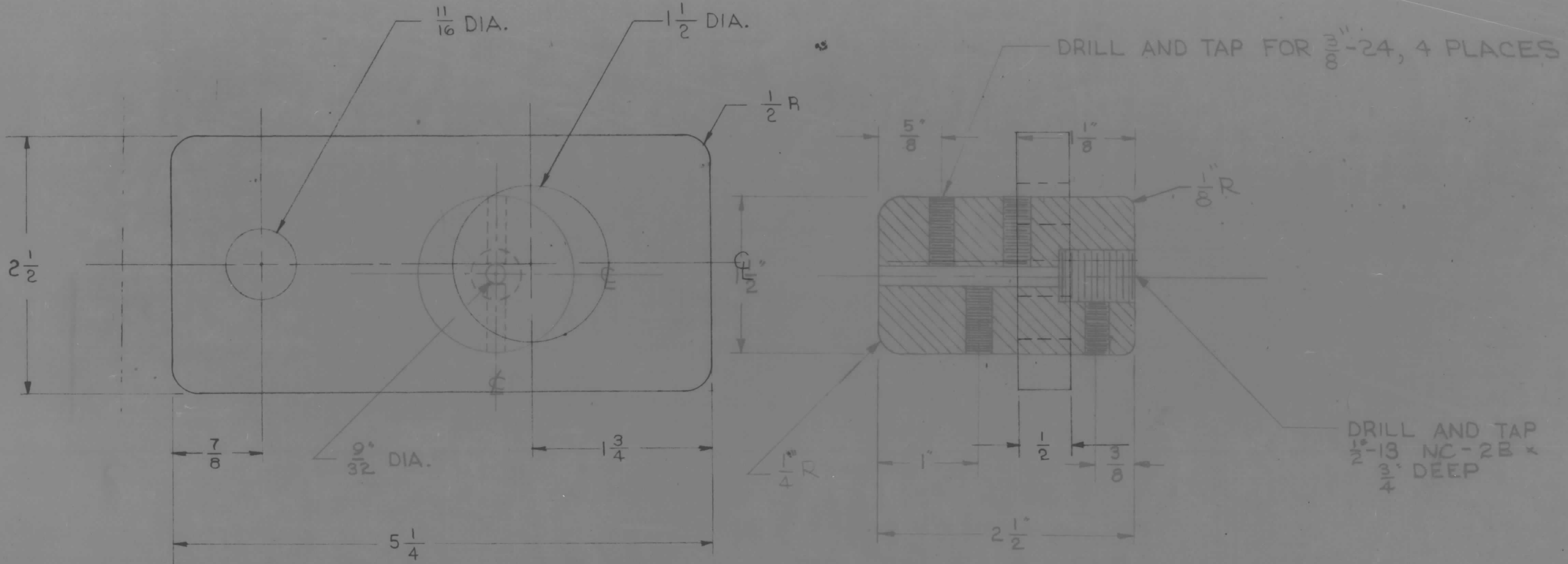
UNLESS OTHERWISE SPECIFIED DIMENSIONS ARE IN INCHES AND INCLUDE CHEMICALLY APPLIED OR PLATED FINISHES		FINAL APPROVAL <i>[Signature]</i>	DATE
DECIMALS .X ± .05 .XX ± .01 .XXX ± .005	FRACTIONS 1/64 ANGLES 0° -30'	MECH. DES.	DATE
MATERIAL 2024 T3		ELECT. DES.	DATE
1/8 THK ALUMINUM		CHECKED	DATE
FINISH S404		DRAWN J. ANGER	DATE 11/13/69
YELLOW IRIDITE			

REQ'D	ITEM	PART NUMBER	DESCRIPTION	SYM.
LIST OF MATERIAL				
<b>THE TECHNICAL MATERIEL CORP.</b> MAMARONECK, NEW YORK				
PLATE, CAPACITOR MTG.				
SIZE	CODE IDENT. NO.	DWG NO.	ISSUE	
B	82679	PM 1433	<i>[Signature]</i>	
SCALE 1:1	SHEET 1 OF 1			

HARDWARE

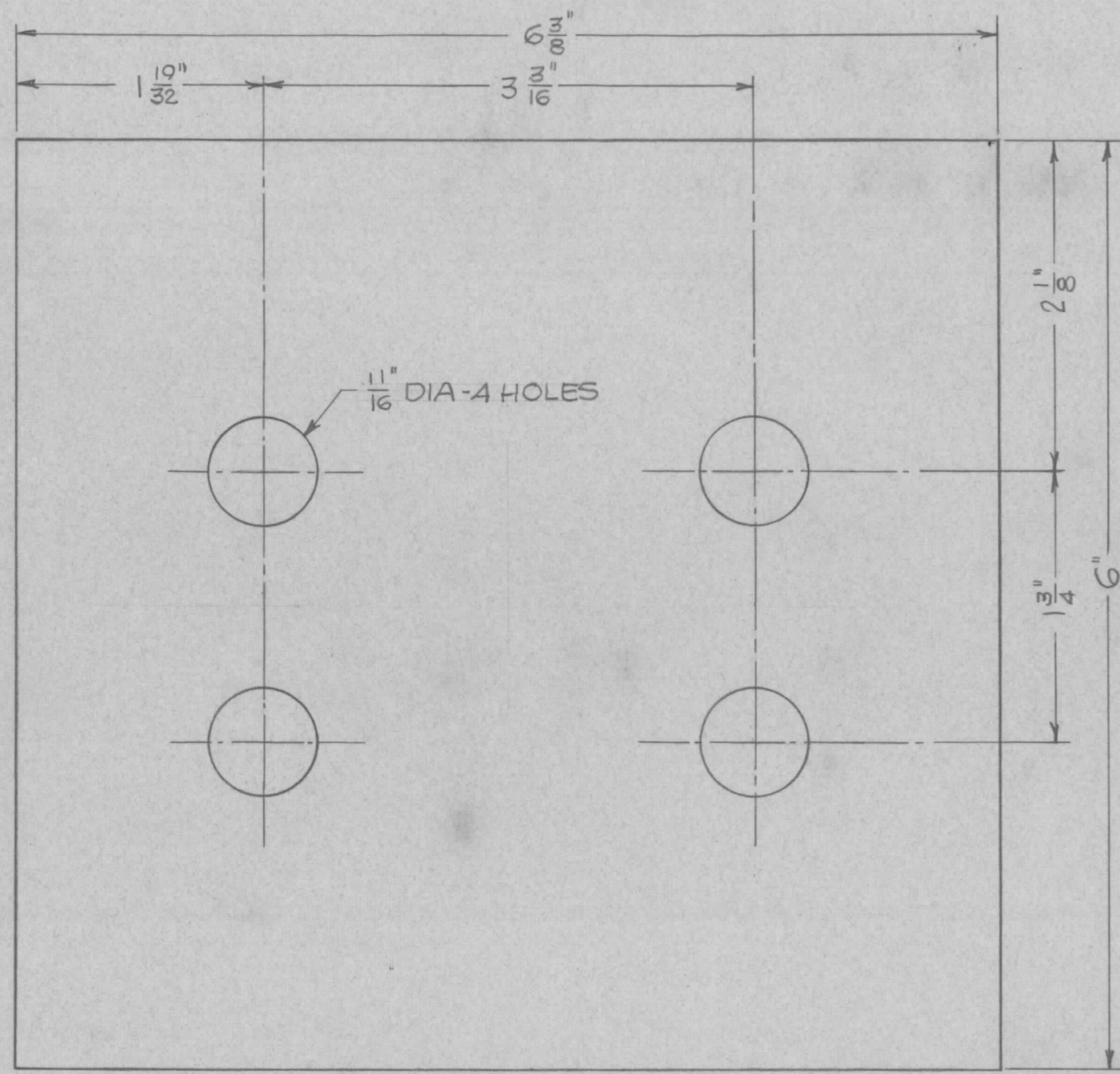
3/8-24 INTERNAL WRENCHING SET SCREW, SS  
 1 REQ'D 1/2" LG.  
 3 REQ'D 3/4" LG.  
 1 ALLEN WRENCH FURNISHED WITH KIT

REVISIONS				
ZONE	SYM.	DESCRIPTION	DATE	APPROVAL
-	A	CHANGED DIMENSIONS: 4/4 TO 5 1/4 - 7/8 DIA. TO 1 1/2 DIA. 1 3/8 TO 1 3/4 - 2 TO 2 1/2	10-23 66	<i>[Signature]</i>



REQD.	PART NO.	ITEM	DESCRIPTION	MATL. OR MFR.	MATL. SPEC. OR CAT. NO.	CKT. SYM.	UNIT WT.	ZONE

D237701 USED ON NEXT ASSY. NEXT ASSY.	UNLESS OTHERWISE SPECIFIED DIMENSIONS ARE IN INCHES	SIGNATURE	DATE	INSULATOR PORT STRAIN CLAMP ADAPTOR (ATU 2) T.M.C. KIT #312 FOR UTILITY TOWER TYPE #170 K.D.	THE TECHNICAL MATERIAL CORP. 700700 FENIMORE ROAD MAMARONECK, N. Y. <b>PM1438</b>
	TOLERANCES ON: DEC. FRACT. ANG. RMS. FIN.	DR. G.B.	9/7/66		
	MATERIAL: ALUM. 6061-T6 STEEL	CHK. R. WELLER	9/15/66		
	FINISH: CLEAN PLATED	ENGR. P.V. GURECKIS	9/15/66		
		PROJ. APPD.		SCALE: 1:1	JOB #237-7
					SHEET 1 OF 1

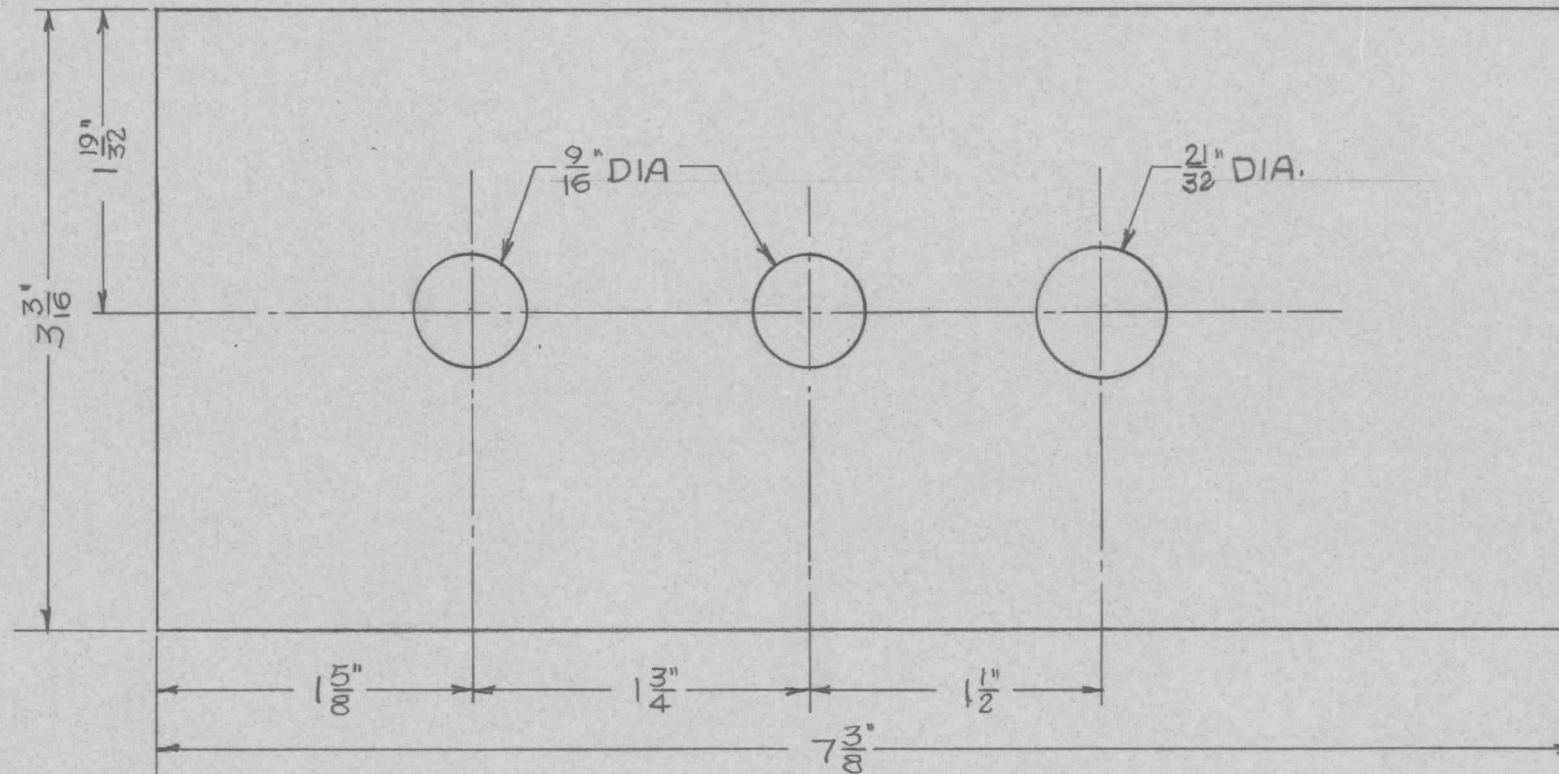


REVISIONS					
LTR	DESCRIPTION	DATE	DRAFT	CHECKED	APPD

QTY REQ	ITEM	PART NO.	MANUFACTURER	DESCRIPTION	SYM		
PARTS LIST							
			UNLESS OTHERWISE SPECIFIED DIMENSIONS ARE IN INCHES AND INCLUDE CHEMICALLY APPLIED OR PLATED FINISHES REMOVE ALL BURRS AND SHARP EDGES.	DRAWN <b>FERNANDEZ</b> DATE <b>2/2/73</b> CHECKED _____ DATE _____ D. ENG. _____ DATE _____ P. ENG. <b>ERB</b> DATE <b>2 Feb 73</b> P. MGR. _____ DATE _____ CHIEF, ENG. DEPT. _____ DATE _____	THE TMC SYSTEMS AND POWER CORPORATION SPRINGFIELD, VIRGINIA  <b>CONNECTION BUS</b>		
		<b>AX732</b>	MATERIAL <b>1/4" X 6" ALUM BUS</b>	SIZE <b>B</b>	CODE IDENT NO. <b>24146</b>	DWG. NO. <b>PM1489</b>	REV
	<b>NEXT ASSY</b>	<b>USED ON</b>	FINISH	SCALE <b>FULL</b>		SHEET <b>1</b> OF <b>1</b>	
	<b>APPLICATION</b>						

**NOTICE TO PERSONS RECEIVING THIS DRAWING**  
 THE TMC SYSTEMS AND POWER CORPORATION claims proprietary right in the material disclosed hereon. This drawing is issued in confidence for engineering information only and may not be reproduced or used to manufacture anything shown hereon without permission from THE TMC SYSTEMS AND POWER CORPORATION to the user. This drawing is loaned for mutual assistance and is subject to recall at any time.

REVISIONS				
LTR	DESCRIPTION	DATE	DRAFT	CHECKED
APPD <td></td> <td></td> <td></td> <td></td>				



STAMP PM1490

QTY REQ	ITEM	PART NO.	MANUFACTURER	DESCRIPTION	SYM
PARTS LIST					
			UNLESS OTHERWISE SPECIFIED DIMENSIONS ARE IN INCHES AND INCLUDE CHEMICALLY APPLIED OR PLATED FINISHES REMOVE ALL BURRS AND SHARP EDGES.	THE TMC SYSTEMS AND POWER CORPORATION SPRINGFIELD, VIRGINIA	
			TOLERANCES ON FRACTIONS ANGLES DECIMALS	BUS PLATE	
			MATERIAL	SIZE	CODE IDENT NO.
			1/4" ALUM. BUS	B	24146
			FINISH	DWG. NO.	REV
			SILVER PLATE	PM1490	
			APPLICATION	SCALE FULL	SHEET 1 OF 1

**NOTICE TO PERSONS RECEIVING THIS DRAWING**

THE TMC SYSTEMS AND POWER CORPORATION claims proprietary right in the material disclosed hereon. This drawing is issued in confidence for engineering information only and may not be reproduced or used to manufacture anything shown hereon without permission from THE TMC SYSTEMS AND POWER CORPORATION to the user. This drawing is loaned for mutual assistance and is subject to recall at any time.

AX735  
NEXT ASSY USED ON

DRAWN FERNANDEZ 2/12/73  
CHECKED  
D. ENG. DATE  
P. ENG. ERB 13 Feb 73  
P. MGR. DATE  
CHIEF, ENG. DEPT. DATE

*J. L. Lanthorn*

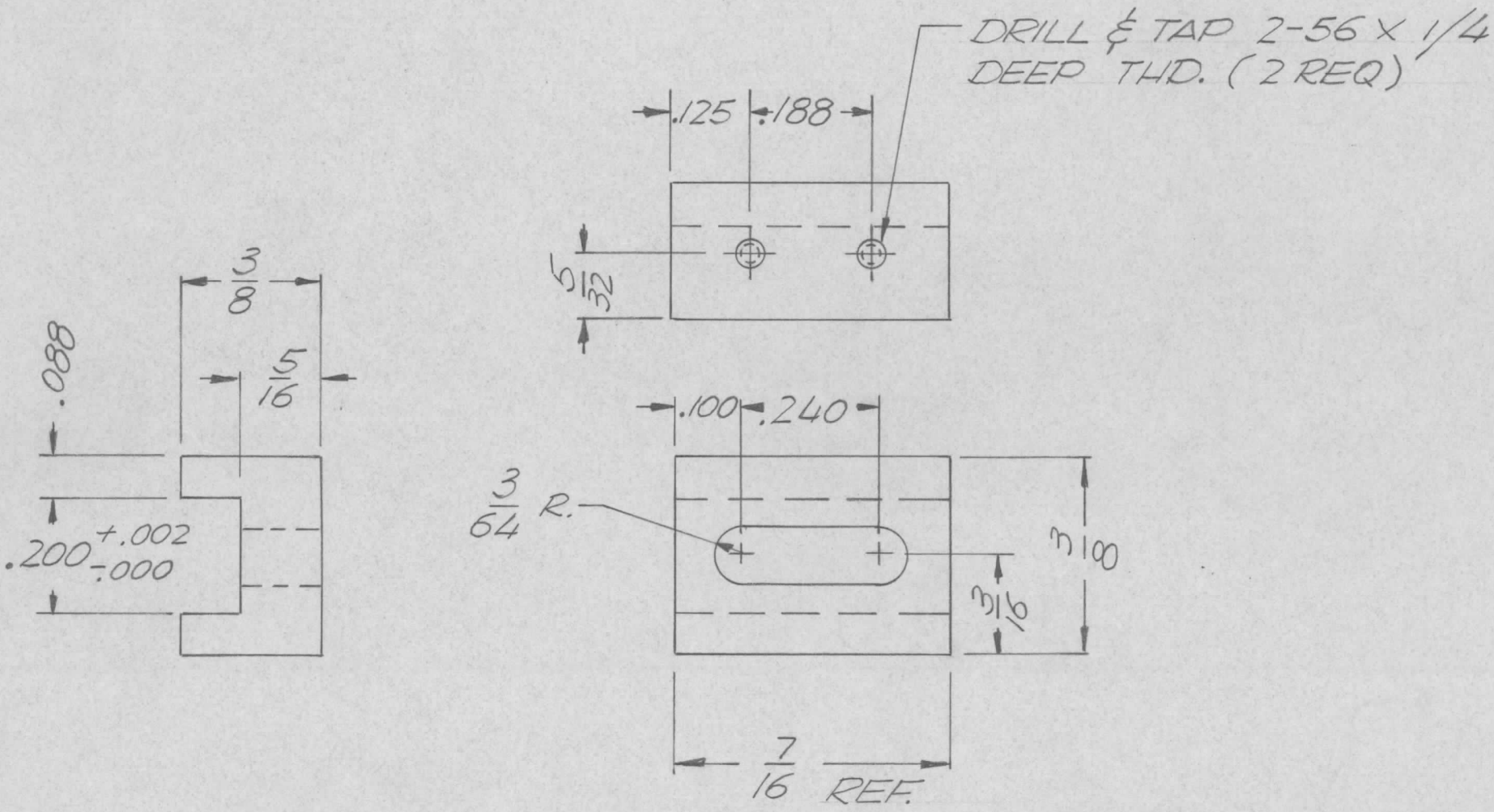








REVISIONS						
ZONE	LTR	DESCRIPTION	DATE	E.M.N.NO	DRAFT	CHKD APPD
	Ø	ORIG RELEASE FOR PROD	11/7/70		CV	
	A	ADD FINISH NOTE	12/7/70	20137	GE	CV P.S.G.



REQ'D	ITEM	PART NUMBER	DESCRIPTION	SYM.
LIST OF MATERIAL				

2	HFR-4	BMA298
QTY / UNIT	MODEL USED ON	ASS'Y NO.
APPLICATION		
	CODE	

**NOTICE TO PERSONS RECEIVING THIS DRAWING**  
 THE TECHNICAL MATERIEL CORPORATION claims proprietary right in the material disclosed hereon. This drawing is issued in confidence for engineering information only and may not be reproduced or used to manufacture anything shown hereon without permission from THE TECHNICAL MATERIEL CORPORATION to the user. This drawing is loaned for mutual assistance and is subject to recall at any time.

UNLESS OTHERWISE SPECIFIED DIMENSIONS ARE IN INCHES AND INCLUDE CHEMICALLY APPLIED OR PLATED FINISHES		FINAL APPROVAL <i>[Signature]</i>	DATE 11/5/70
DECIMALS .X ± .05 .XX ± .01 .XXX ± .005	FRACTIONS 1/64 ANGLES 0° -30'	MECH. DES. <i>[Signature]</i>	DATE 12/30/70
ELECT. DES.		CHECKED	DATE
DRAWN GE		DATE 12/30/70	
MATERIAL 3/8 SQ. ALUM BAR 6063-T5 FINISH SL04 IRIDITE			

THE TECHNICAL MATERIEL CORP. MAMARONECK, NEW YORK			
PAD SW. MOUNT			
SIZE B	CODE IDENT. NO. 82679	DWG NO. PM1497	ISSUE A
SCALE 4:1		SHEET OF	