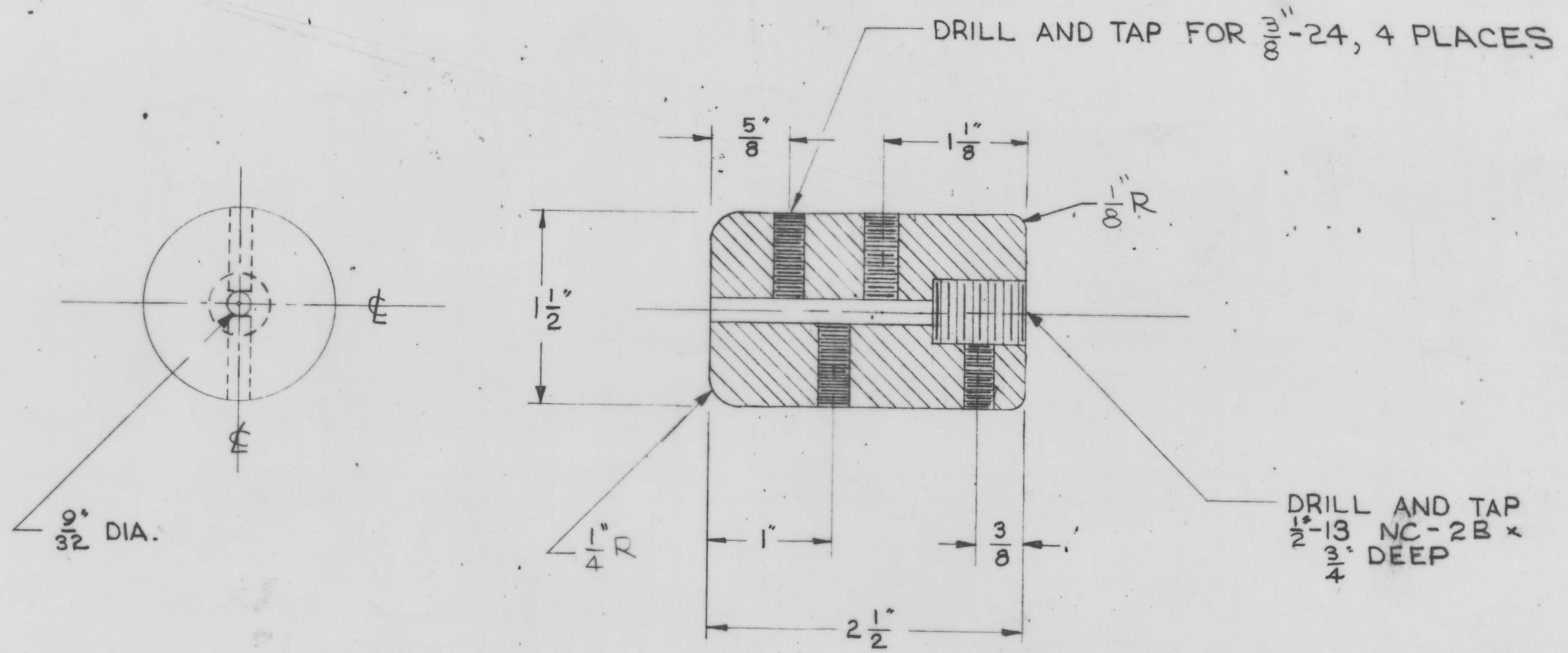


HARDWARE

3/8-24 INTERNAL WRENCHING SET SCREW, SS
 1 REQ'D 1/2" LG.
 3 REQ'D 3/4" LG.
 1 ALLEN WRENCH FURNISHED WITH KIT

REVISIONS				
ZONE	SYM.	DESCRIPTION	DATE	APPROVAL
	A	HARDWARE WAS 1/4-20 UNC SET SCREW, 1/8 R ADDED, 1/4 R WAS 45° CHAMFER.	10/27/66	ggk



REQD.	PART NO.	ITEM	DESCRIPTION	MATL. OR MFR.	MATL. SPEC. OR CAT. NO.	CKT. SYM.	UNIT WT.	ZONE
LIST OF MATERIAL								

	UNLESS OTHERWISE SPECIFIED DIMENSIONS ARE IN INCHES			SIGNATURE	DATE	ADAPTER (ATU #2) T.M.C. KIT # 312 FOR UTILITY TOWER TYPE 170' K.D.	THE TECHNICAL MATERIEL CORP. 700 FENIMORE ROAD MAMARONECK, N. Y. PM1439
	TOLERANCES ON:			DR. C.B.	9-22-66		
	DEC.	FRACT.	ANG.	CHK. <i>R. Vetter</i>	7-22-66		
	MATERIAL:			ENGR. J. KARAGANIS	10/28/66		
FINISH:					SCALE: NONE Job # 237-7		B237710
CLEAN							
USED ON	NEXT ASSY.		PROJ. APPD.		SHEET 1 OF 1		