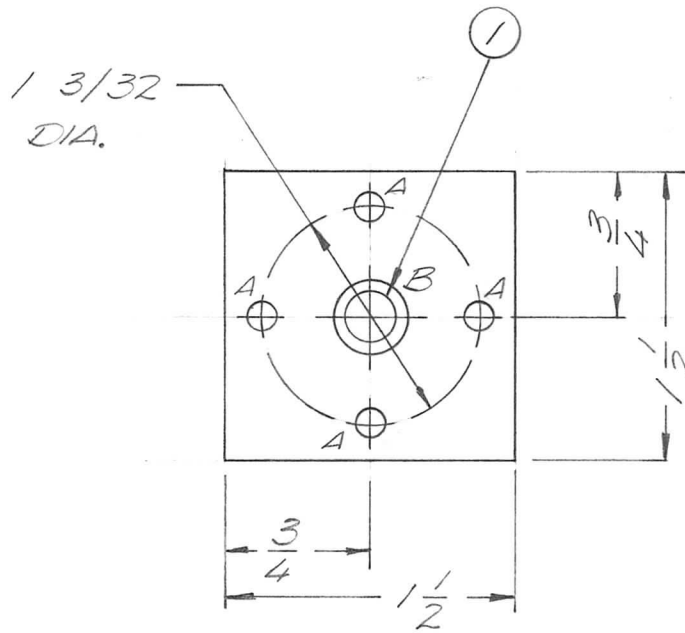


APPLICATION			REVISIONS						
QTY	MODEL USED ON	ASS'Y NO.	LTR	DESCRIPTION	DATE	E.M.N.NO	DRAFT	CHKD	APPD
1	AX5113-2	BMA433-2	X	EXP RELEASE	6/2/70		GE		
			Ø	ORIG RELEASE FOR PROD	6/2/70		CV		



HOLE	DESCRIPTION	QTY.
A	9/64 DIA.	4
B	.3775	1

UNLESS OTHERWISE SPECIFIED DIMENSIONS ARE IN INCHES AND INCLUDE CHEMICALLY APPLIED OR PLATED FINISHES		1	1	BB118-3	BEARING FLANGE TYPE	B
DECIMALS .X ± .05 .XX ± .01 .XXX ± .005	FRACTIONS 1/64 TOLS. ANGLES 0° -30'	REQ'D	ITEM	PART NUMBER	DESCRIPTION	SYM.
F. BUDETTI LIST OF MATERIAL						
MATERIAL 2024 T3 .125 ALUM		FINAL APPROVAL		DATE	THE TECHNICAL MATERIEL CORP. MAMARONECK, NEW YORK	
FINISH S404 YEL. IRIDITE		MECH. DES.		DATE	PLATE, BEARING	
		ELECT. DES.		DATE		
		CHECKED		DATE		
		DRAWN		DATE		
NOTICE TO PERSONS RECEIVING THIS DRAWING THE TECHNICAL MATERIEL CORPORATION claims proprietary right in the material disclosed hereon. This drawing is issued in confidence for engineering information only and may not be reproduced or used to manufacture anything shown hereon without permission from THE TECHNICAL MATERIEL CORPORATION to the user. This drawing is loaned for mutual assistance and is subject to recall at any time.				SIZE A	CODE IDENT. NO. 82679	DWG NO. PM1435
				SCALE 1:1	SHEET OF	
					ISSUE Ø	