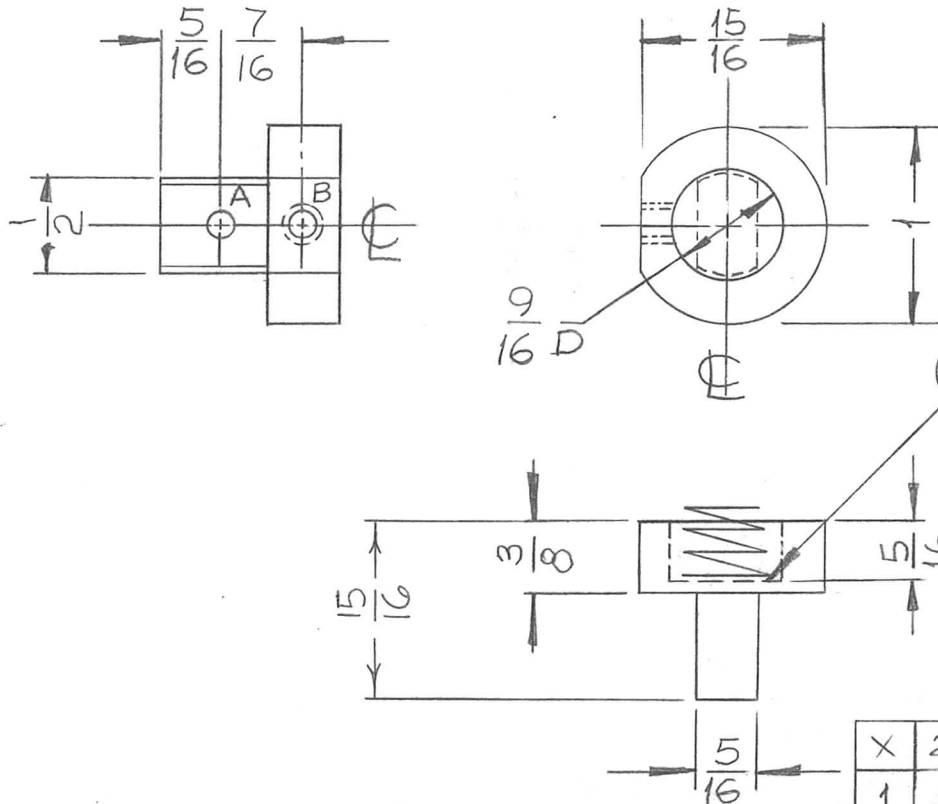


REQ. PER UNIT	USED ON			PM1300 \emptyset
	MODEL	ASS'Y. NO.	DATE	
1	AP129		4-11-66	

HOLE	DESCRIPTION	REQ'D
A	9/64 DIA	1
B	DRILL & TAP 8-32	1

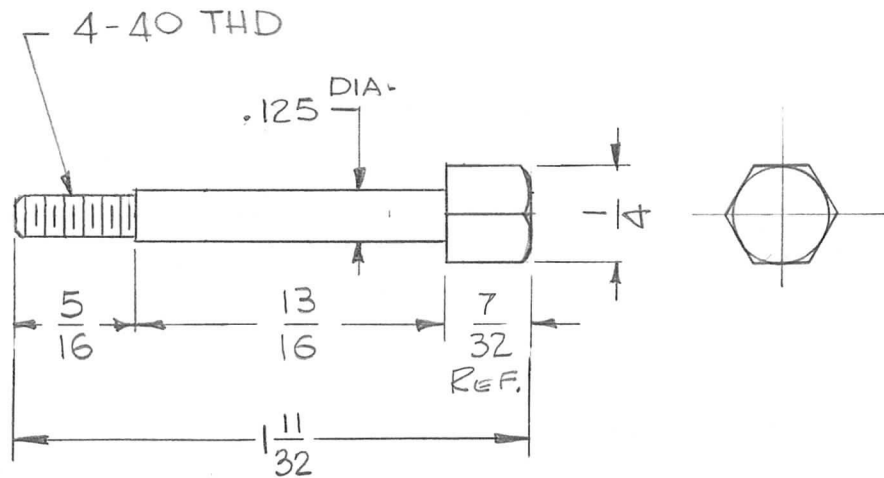


REQ. ITEM	PART NO.	DESCRIPTION	SYMBOL
X 2	BS100	SOLDER, TIN ALLOY	
1 1	SP128-2	SPRING, FRICTION DRIVE	
1 DIA		THE TECHNICAL MATERIEL CORP. MAMARONECK, NEW YORK	
STOCK SIZE			
BRASS		CONTACT, ELEC.	
MATERIAL			
FREE MACH.		WVW	QCS
TYPE & TEMPER	HEAT TREAT. SPEC.	DRAWN	CHECKED
S135-NICKEL PL. BRIGHT			FINAL APPROVAL
FINISH & SPEC. NO.		ELEC. DES. APP.	MECH. DES. APP.

SYM	DESCRIPTION	DATE	CH. NO.	DRAFTS	CHECKER	ENG. APP.
\emptyset	ORIGINAL RELEASE FOR PRODUCTION	2/23/67	\emptyset	CV		
X ₁	PICTORIAL CORRECTED	5-24-66	X ₁	WVW		
X	EXPER. RELEASE	4/13/66		WVW	QCS	
UNLESS OTHERWISE SPECIFIED DIMENSIONS ARE IN INCHES AND INCLUDE CHEMICALLY APPLIED OR PLATED FINISHES		SCALE 1:1				
DECIMALS .X \pm .05 .XX \pm .01 .XXX \pm .005	TOLERANCES	FRACTIONS \pm 1/64 ANGLES \pm 0° 30'	CODE			

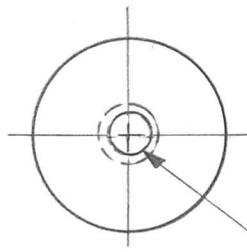
PM1300 \emptyset

REQ. PER UNIT	USED ON			PM1302	Ø
	MODEL	ASS'Y. NO.	DATE		
8	TLAA-2.5K	BMA124	6-7-66		

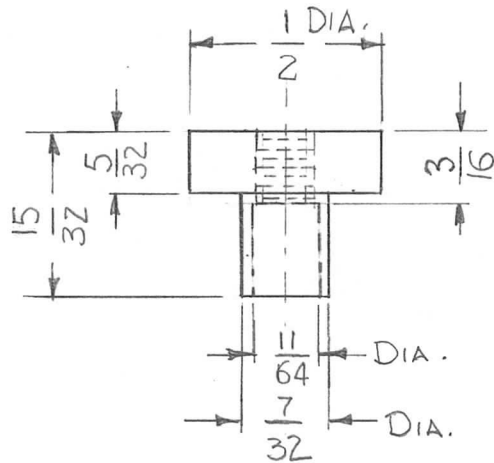


REQ.	ITEM	PART NO.	BUDETTI	DESCRIPTION	SYMBOL	
		AS NOTED	THE TECHNICAL MATERIEL CORP. MAMARONECK, NEW YORK			
Ø	ORIGINAL RELEASE FOR PRODUCTION	11/16/66	Ø	CV		
X	EXPERIMENTAL RELEASE	6/4/66	X	HGA QCB		
SYM	DESCRIPTION	DATE	CH. NO.	DRAFTS	CHECKER	ENG. APP.
UNLESS OTHERWISE SPECIFIED DIMENSIONS ARE IN INCHES AND INCLUDE CHEMICALLY APPLIED OR PLATED FINISHES		SCALE		2:1		
DECIMALS .X ± .05 .XX ± .01 .XXX ± .005	TOLERANCES	FRACTIONS ± 1/64 ANGLES ± 0° 30'	CODE	A		
	FREE MACHINING		S135 NICKEL PLATE			
	TYPE & TEMPER	HEAT TREAT. SPEC.	DRAWN	CHECKED	FINAL APPROVAL	
	FINISH & SPEC. NO.	ELEC. DES. APP.	MECH. DES. APP.	PM1302	Ø	

REQ. PER UNIT	USED ON			PM1303	Ø
	MODEL	ASS'Y. NO.	DATE		
4	TLAA-2.5K	A5498	6-7-66		



DRILL & TAP 8-32



SYM	DESCRIPTION	DATE	CH. NO.	DRAFTS	CHECKER	ENG. APP.	REQ. ITEM	PART NO.	BUDETTI DESCRIPTION	SYMBOL	
Ø	ORIGINAL RELEASE FOR PRODUCTION	11/17/66	Ø	CV			AS NOTED		THE TECHNICAL MATERIEL CORP. MAMARONECK, NEW YORK		
X	EXPERIMENTAL RELEASE	6/14/66	X	HLA	QCB		STOCK SIZE			FASTENER	
							BRASS				
							MATERIAL				
							FREE MACHINING		G.D.L.	QCB	Ø
							TYPE & TEMPER	HEAT TREAT. SPEC.	DRAWN	CHECKED	FINAL APPROVAL
							5135 NICKEL PLATE				PM1303
							FINISH & SPEC. NO.		ELEC. DES. APP.	MECH. DES. APP.	Ø

UNLESS OTHERWISE SPECIFIED
DIMENSIONS ARE IN INCHES AND INCLUDE
CHEMICALLY APPLIED OR PLATED FINISHES

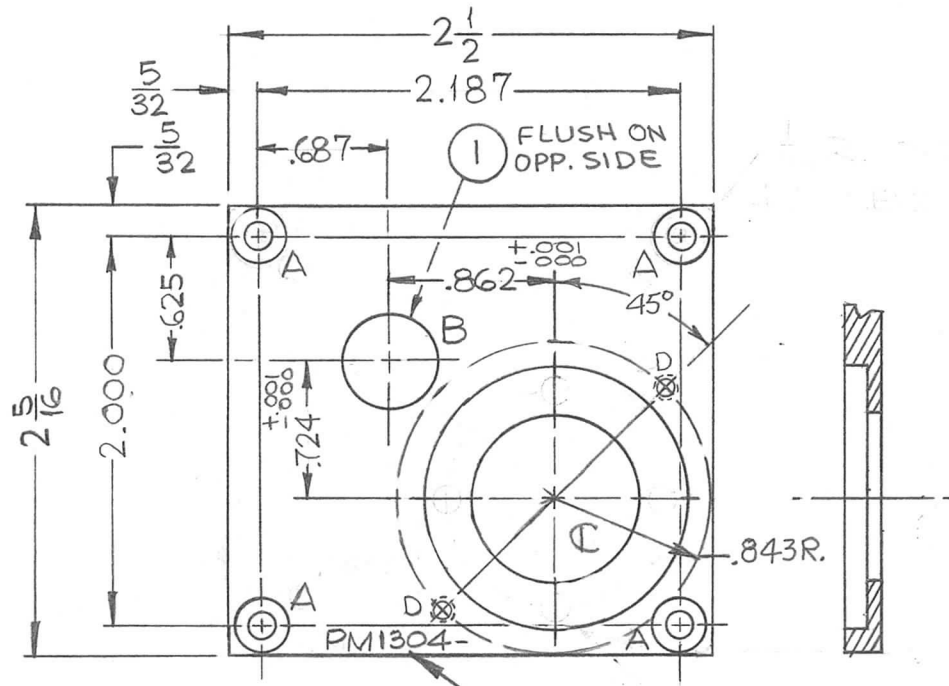
DECIMALS
.X ± .05
.XX ± .01
.XXX ± .005

FRACTIONS
± 1/64
ANGLES
± 0° 30'

TOLERANCES

SCALE
2:1

REQ. PER UNIT	USED ON			PM1304 A
	MODEL	ASS'Y. NO.	DATE	
1	TLAA-2.5K	BMA126	6-3-66	



HOLE	DESCRIPTION	REQ'D
A	.144 DIA. & C'SK 82° TO .284	4
B	.4990-.4995 DIA.	1
C	.8750-.8755 DIA. & C'BORE 1-3/8x.125 DP.	1
D	DRILL & TAP FOR 0440 (THRU)	2

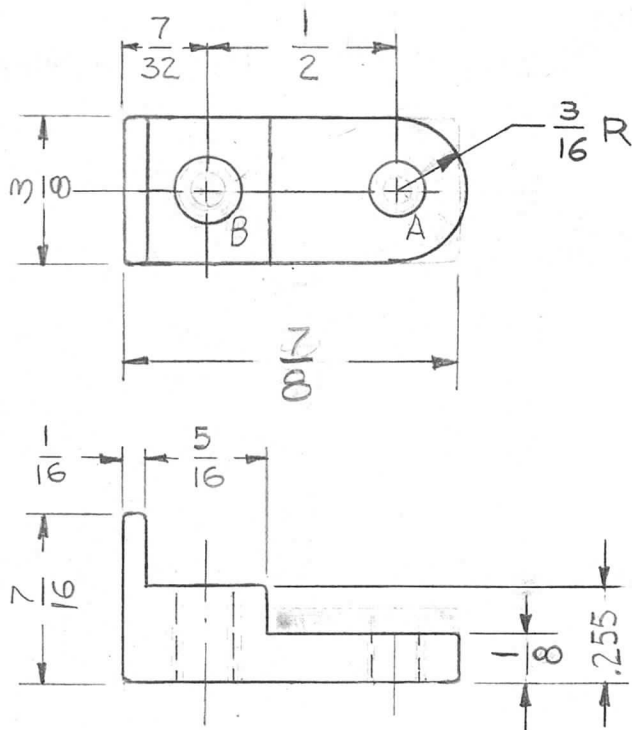
MARK TMC PART NO. 1/8 HIGH GOTHIC W/LATEST REV. LETTER.

REF: LD2135

A REV. & UPDATED		7.68	18990	HLA	FB	1	1	BB126-15	BEARING, RACE	B
Ø ORIGINAL RELEASE FOR PRODUCTION		11/16/66	Ø	CV				3/16	THE TECHNICAL MATERIEL CORP. MAMARONECK, NEW YORK	
X1 ITEM 1 ADDED		9-20-66	X1	HLA	FB			ALUMINUM	PLATE, BEARING	
X EXPERIMENTAL RELEASE		6-14-66	X	HLA	FB	BC				
SYM	DESCRIPTION	DATE	CH. NO.	DRAFTS	CHECKER	ENG. APP.	MATERIAL			
UNLESS OTHERWISE SPECIFIED DIMENSIONS ARE IN INCHES AND INCLUDE CHEMICALLY APPLIED OR PLATED FINISHES		SCALE		2024-T3		6-3-66	H. AUSTIN	QC/B	FINAL APPROVAL	
		1:1								
DECIMALS .X ± .05 .XX ± .01 .XXX ± .005		FRACTIONS ± 1/64 ANGLES ± 0° 30'		TOLERANCES		S404-YELLOW IRIDITE		FINISH & SPEC. NO.		ELEC. DES. APP. MECH. DES. APP.
										PM1304 A

TMC P/N	A
PM1309-1	9/64 Dia
PM1309-2	8-32 DR & TAP

REQ. PER UNIT	USED ON			PM 1309 B
	MODEL	ASS'Y. NO.	DATE	
19	TLAA-2.5K	A SIZE	6-9-66	



HOLES:
 A - SEE CHART
 B - 11/64 DIA. (1 REQ.)

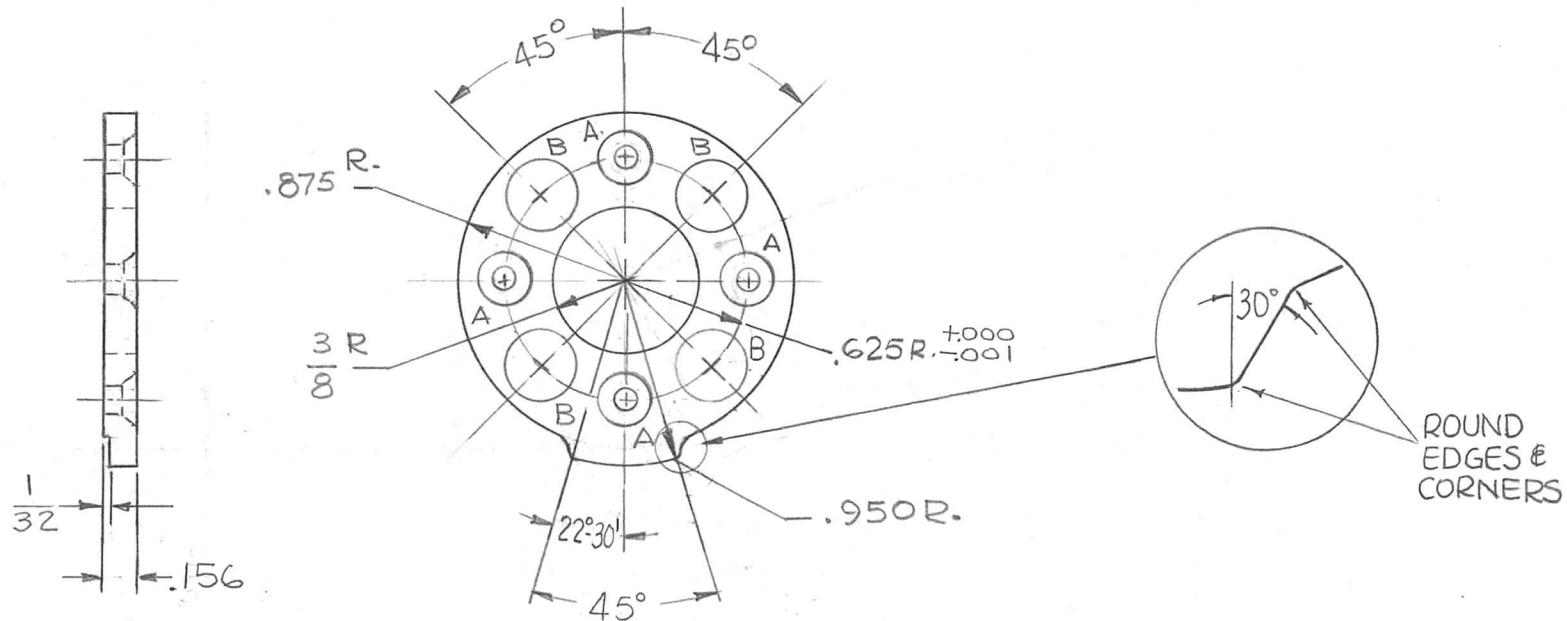
NOTE:
 ROUND ALL CORNERS &
 SHARP EDGES

B	ADDED CHART	10/23/69	19608	KD	<i>by F.B.M.</i>
A	1/8 WAS 3/16	7-11-67	18350	LAK	<i>J.D.</i>
Ø	ORIGINAL RELEASE FOR PRODUCTION	11/17/66	Ø	CV	<i>Q.B.</i>
XI	HOLES WERE 6-32 TAP	8-23-66	XI	<i>M.H.</i>	<i>Q.B.</i>
X	EXPERIMENTAL RELEASE	6-16-66	-#	Jc	<i>Q.B.</i>
SYM	DESCRIPTION	DATE	CH. NO.	DRAFTS	CHECKER
UNLESS OTHERWISE SPECIFIED DIMENSIONS ARE IN INCHES AND INCLUDE CHEMICALLY APPLIED OR PLATED FINISHES		SCALE 2:1			
DECIMALS .X ± .05 .XX ± .01 .XXX ± .005	TOLERANCES	FRACTIONS ± 1/64 ANGLES ± 0° 30'	CODE A		

REQ. ITEM	PART NO.	BUDETTI	DESCRIPTION	SYMBOL
	AS NOTED	THE TECHNICAL MATERIEL CORP. MAMARONECK, NEW YORK		
	STOCK SIZE	BASE, SWITCH CONTACT		
	BRASS			
	MATERIAL			
	1/2 HARD	6-9-66 G.D.L.	<i>Q.B.</i>	<i>Q.B.</i>
	TYPE & TEMPER	HEAT TREAT. SPEC.	DRAWN	CHECKED
	S245 SILVER PLATE		<i>Q.B.</i>	<i>Q.B.</i>
	S423 IRIDITE 18-P SILVER-KOTE			
	FINISH & SPEC. NO.	ELEC. DES. APP.	MECH. DES. APP.	PM 1309 B

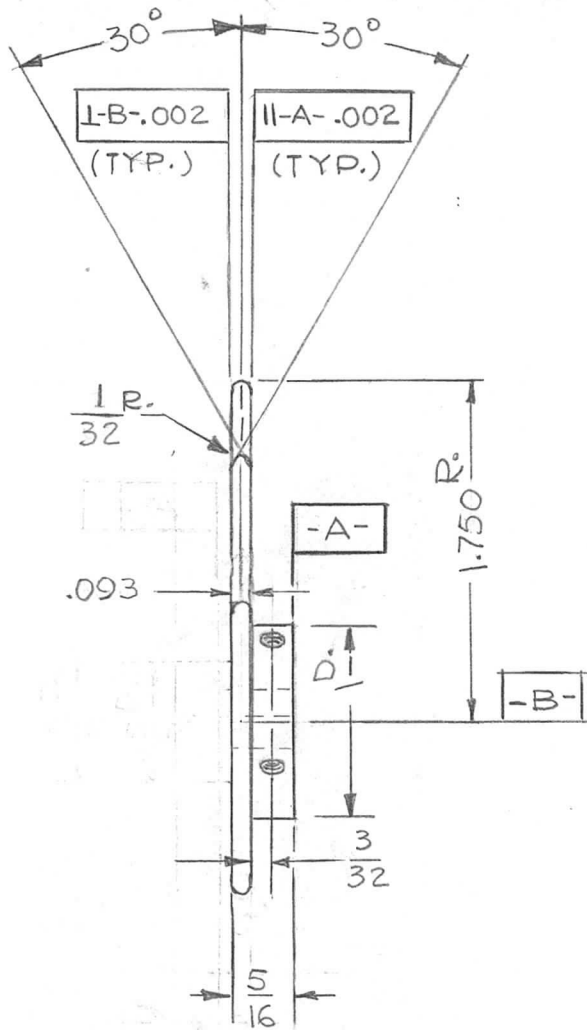
REQ. PER UNIT	USED ON			PM1310	Ø
	MODEL	ASS'Y. NO.	DATE		
2	TLAA-2.5K	A5541	6-10-66		

HOLE	DESCRIPTION	REQ
A	.144 D. C'SK 82° TO .284 DIA	4
B	3/8 DIA	4

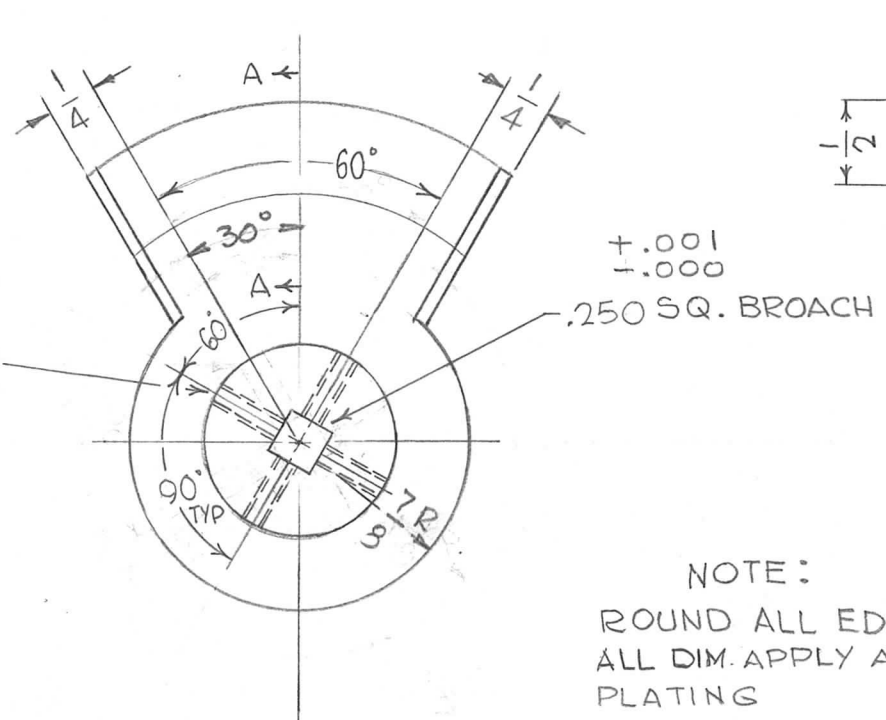


NOTE:
USED WITH GR229

Ø	ORIGINAL RELEASE FOR PRODUCTION	2/23/67	B	CV			REQ. ITEM	PART NO.	BUDETTI	DESCRIPTION	SYMBOL
X2	45° WAS 32.5°, 22.30' WAS 16.2°	2-17-67					AS NOTED		THE TECHNICAL MATERIEL CORP. MAMARONECK, NEW YORK		
X1	EXP RELEASE	11-28-66	X1				STOCK SIZE		CAM		
X	EXPERIMENTAL RELEASE	6/16/66					BRASS				
SYM	DESCRIPTION	DATE	CH. NO.	DRAFTS	CHECKER	ENG. APP.	MATERIAL				
UNLESS OTHERWISE SPECIFIED DIMENSIONS ARE IN INCHES AND INCLUDE CHEMICALLY APPLIED OR PLATED FINISHES		SCALE		1:1			HALF HARD		G.D.L.	JCB	Ø
DECIMALS .X ± .05 .XX ± .01 .XXX ± .005		TOLERANCES		FRACTIONS ± 1/64 ANGLES ± 0° 30'		CODE	NATURAL		DRAWN	CHECKED	FINAL APPROVAL
							FINISH & SPEC. NO.		ELEC. DES. APP.	MECH. DES. APP.	DM1310



REQ. PER UNIT	USED ON			PM1311	Ø ₃
	MODEL	ASS'Y. NO.	DATE		
1	TLAA-2.5K	AS128	6-9-66		



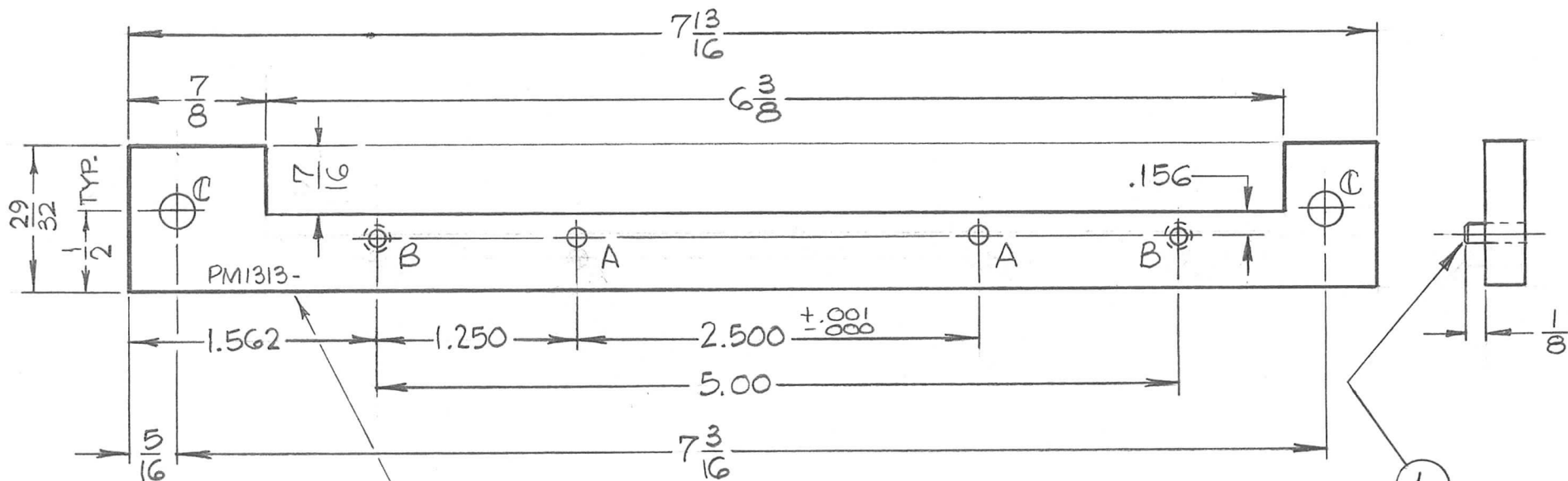
NOTE:
 ROUND ALL EDGES 1/64R.
 ALL DIM. APPLY AFTER
 PLATING

Ø	ORIGINAL RELEASE FOR PRODUCTION	11/17/66	Ø	CV		
X3	BROACH ROTATED 30° SECT. AA ADDED	8/24/66	AA	Jc	qcb	oab
X2	DIM 7/8 WAS 1/8 R 2 TAP 8-32 ADDED	8.866		G.D.L		
X1	UPDATED.	7-14-66	AA	G.D.L	oab	
X	EXPERIMENTAL RELEASE	6/16/66	AA	GDL	qcb	
SYM	DESCRIPTION	DATE	CH. NO.	DRAFTS	CHECKER	ENG. APP.
UNLESS OTHERWISE SPECIFIED DIMENSIONS ARE IN INCHES AND INCLUDE CHEMICALLY APPLIED OR PLATED FINISHES		SCALE 1:1				
DECIMALS .X ± .05 .XX ± .01 .XXX ± .005	TOLERANCES	FRACTIONS ± 1/64 ANGLES ± 0° 30'	CODE A			

REQ. ITEM	PART NO.	BUDETTI	DESCRIPTION	SYMBOL
	AS NOTED		THE TECHNICAL MATERIEL CORP. MAMARONECK. NEW YORK	
	STOCK SIZE		ROTOR, BAND SWITCH	
	BRASS		"L" SECTION	
	MATERIAL			
	HALF HARD	G.D.L	qcb	oab
	TYPE & TEMPER	HEAT TREAT. SPEC.	DRAWN	CHECKED
	S245 SILVER PLATE		oab	oab
	S423 SILVER KOTE			
	FINISH & SPEC. NO.	ELEC. DES. APP.	MECH. DES. APP.	
				PM1311

HOLE	DESCRIPTION	REQ'D
A	.1240 -.1245	2
B	DRILL & TAP FOR 8-32	2
C	7/32 DIA.	2

REQ. PER UNIT	USED ON			PM1313	A
	MODEL	ASS'Y. NO.	DATE		
1	TAA-2.5K	A5493	6-17-66		

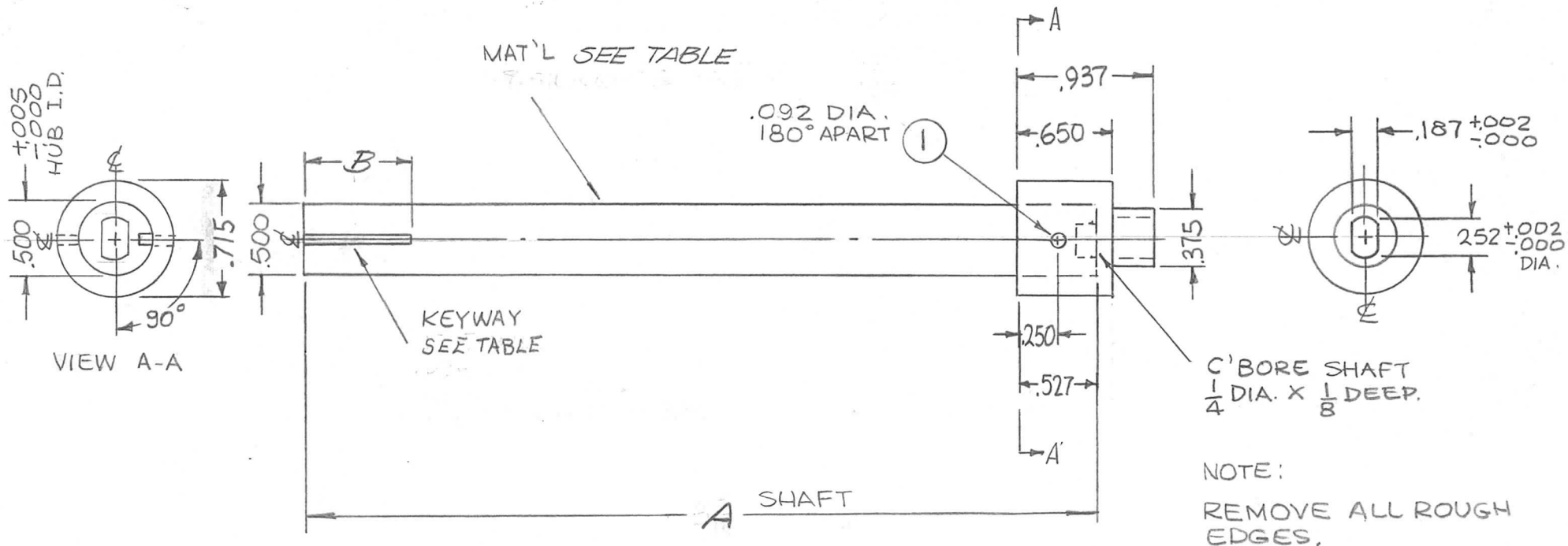


MARK TMC PT. NO. 1/8 HIGH
GOTHIC W/LATEST REV. LETTER

MOUNT IN "A" HOLES
AS SHOWN, AFTER
FINISHING.

							2	1	PNI16-A-3S	PIN, DOWEL	A				
							REQ. ITEM	PART NO.			BUDETTI	DESCRIPTION	SYMBOL		
A	FINISH WAS 5245 SILVER PLATE S423 SILVER KOTE		4.24.68	18893	H.S.	FB	1/4 THICK			THE TECHNICAL MATERIEL CORP. MAMARONECK, NEW YORK					
Ø	ORIGINAL RELEASE FOR PRODUCTION		11/16/66	Ø	RME		ALUMINUM			RETAINER, GEAR ASS'Y					
X	EXPERIMENTAL RELEASE		6-17-66	X	H.A.	QCB	MATERIAL								
SYM	DESCRIPTION		DATE	CH. NO.	DRAFTS	CHECKER	ENG. APP.	2024-T4			6-17-66 HAUSTIN	QCB	QCB		
UNLESS OTHERWISE SPECIFIED DIMENSIONS ARE IN INCHES AND INCLUDE CHEMICALLY APPLIED OR PLATED FINISHES							SCALE 1:1			TYPE & TEMPER 5404 YEL IDIRITE			HEAT TREAT. SPEC. DRAWN CHECKED FINAL APPROVAL		
DECIMALS .X ± .05 .XX ± .01 .XXX ± .005		TOLERANCES		FRACTIONS ± 1/64 ANGLES ± 0° 30'		CODE		FINISH & SPEC. NO.			ELEC. DES. APP.		MECH. DES. APP.		
										PM1313		A			

TMC P/N	MATERIAL	KEYWAY	A	B	REQ. PER UNIT	USED ON			PM1315	B
						MODEL	ASSY. NO.	DATE		
PM1315-1	G7 SILICONE GLASS	.125 WIDE .128 DEEP	5 3/16	11/16	1	TLAA-2.5K	AS128	8-22-66		
-2	G10-EPOXY	3/32 WIDE & DEEP	8 1/4	7						

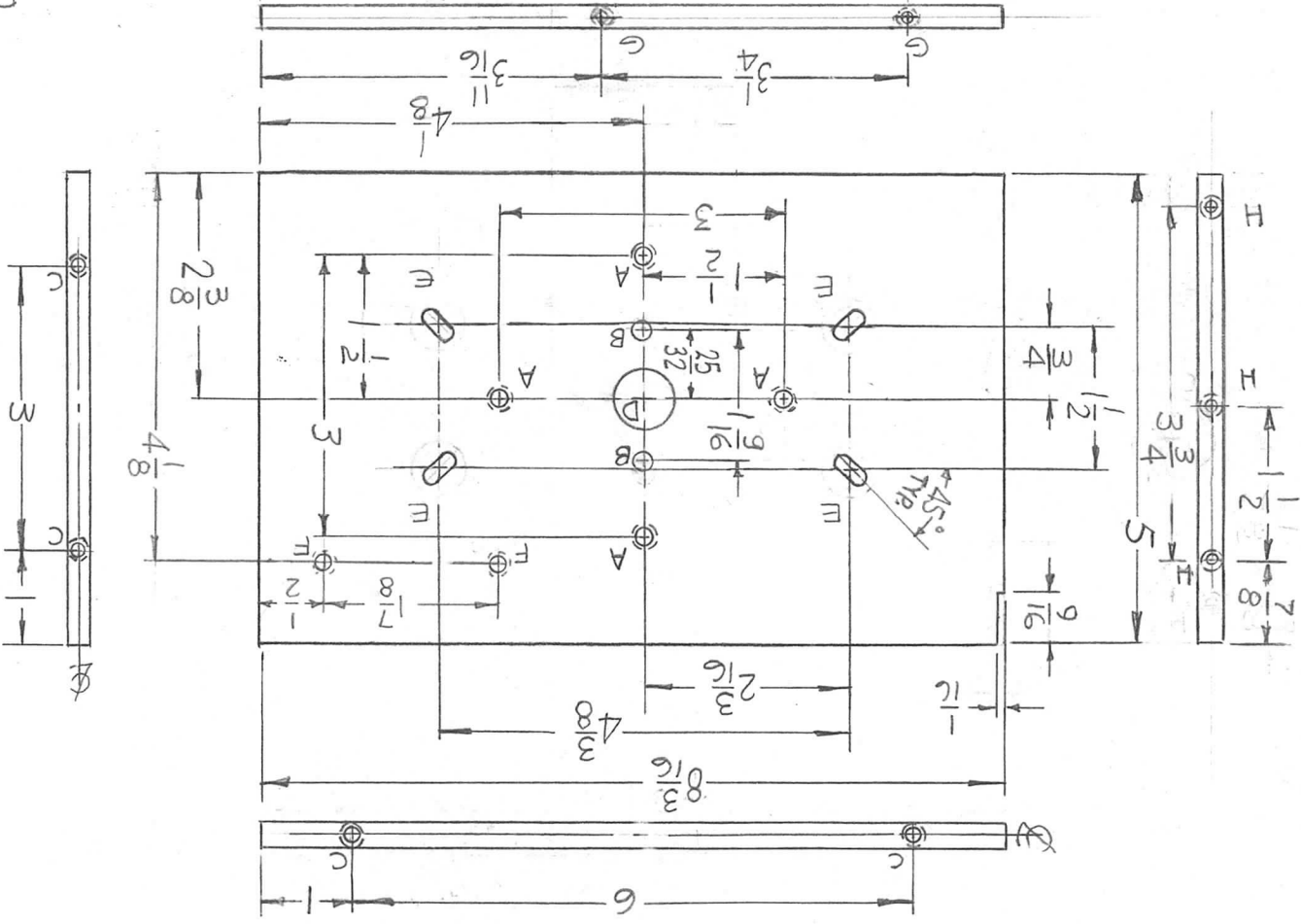


B	ADD TMC P/N CHART	1-13-72	20471	GE	ES	ES												
A	ADDED DIM. 90° FOR KEYWAY. IN LINE WITH PIN WITHIN .301 DEL.	5-31-67	18256	L.A.K.	MS	FB			1	PN 116-M-6-S	PIN, DOWEL							
Ø	ORIGINAL RELEASE FOR PRODUCTION	11-18-66	Ø	RME				REQ. ITEM	PART NO.	BUDETTI	DESCRIPTION	SYMBOL						
X3	5-3/16 WAS 4-1/8	10-21-66	X2	MS	MS	MS		AS SHOWN		THE TECHNICAL MATERIEL CORP. MAMARONECK. NEW YORK								
X2	.715 WAS .750 MAT'L W/G10	8-25-66	X1	MS		MS		STOCK SIZE		HUB & SHAFT, BANDSWITCH								
X1	REDRAWN & REVISED	8-22-66	X	MS	MS	MS		MATERIAL										
SYM	DESCRIPTION	DATE	CH. NO.	DRAFTS	CHECKER	ENG. APP.		#303		MS	MS	MS						
UNLESS OTHERWISE SPECIFIED DIMENSIONS ARE IN INCHES AND INCLUDE CHEMICALLY APPLIED OR PLATED FINISHES		SCALE		1:1				TYPE & TEMPER	HEAT TREAT. SPEC.	DRAWN	CHECKED	FINAL APPROVAL						
DECIMALS	TOLERANCES	FRACTIONS	CODE					S104-PASSIVATE		MS	MS	PM1315	B					
.X ± .05		± 1/64	A					FINISH & SPEC. NO.		ELEC. DES. APP.	MECH. DES. APP.							
.XX ± .01		ANGLES																
.XXX ± .005		± 0° 30'																

REQ. PER UNIT	MODEL	ASSY. NO.	DATE
1	TLAA-25K	AS128	7-22-65

USED ON
PM1316 C

- HOLES:
- A DRILL & TAP FOR 10-32 (4 REQ)
 - B. 11/32 DIA. (2 REQ)
 - C. DRILL & TAP FOR 8-32 X 1/2 DEEP. (4 REQ)
 - D. PRESS FIT ITEM 1 (1 REQ)
 - E. 5/32 X 3/8 SLOT (4 REQ)
 - F. DRILL & TAP FOR 6-32 (2 REQ)
 - G. DRILL & TAP FOR 3-48
 - H. DRILL & TAP FOR 4-40

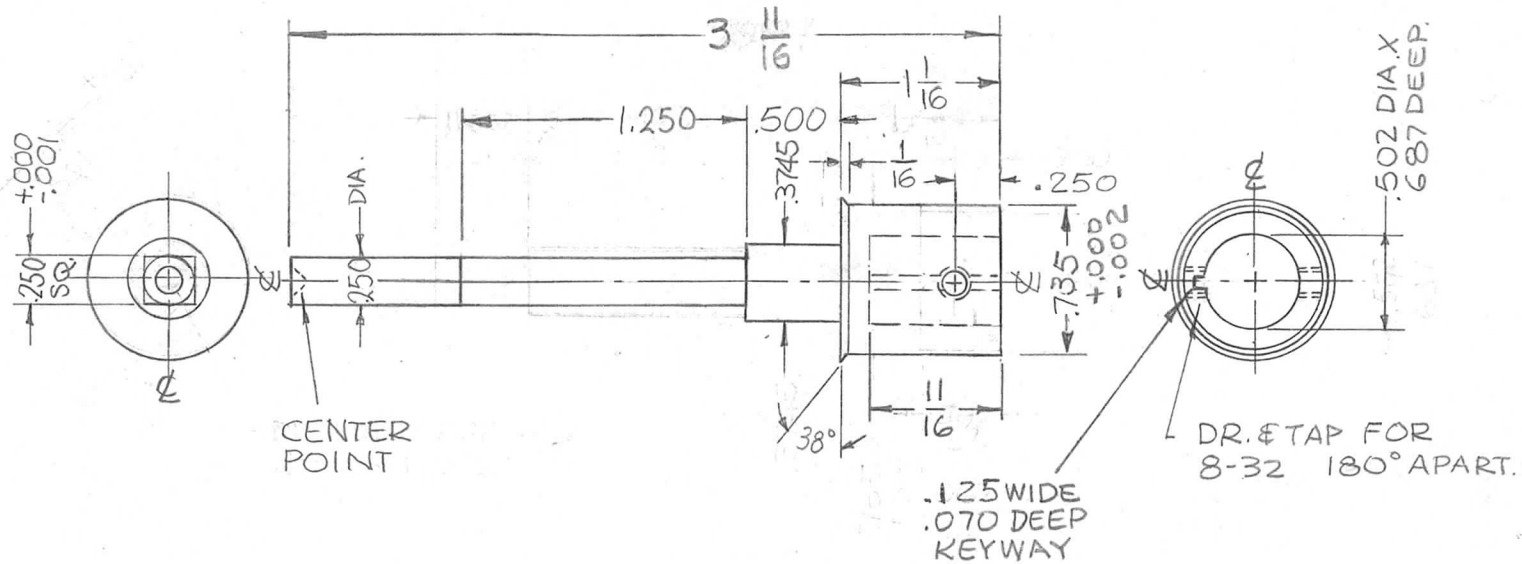


REF: TMC DWG L02140

REQ. ITEM	PART NO.	DESCRIPTION	SYMBOL
1	BB120-2	F. BUDETTI	

SYM	DESCRIPTION	DATE	CH. NO.	DRAFTS	CHECKER	ENG. APP.	UNLESS OTHERWISE SPECIFIED			DIMENSIONS ARE IN INCHES AND INCLUDE CHEMICALLY APPLIED OR PLATED FINISHES			TOLERANCES			DECIMALS		
							SCALE			DO NOT SCALE			FRACTIONS	ANGLES	± .05		± .01	± .005
A	TYPE & TEMP WAS 5052-H32	2-16-67	1779	RME	[Signature]													
B	HOLE "A" WAS 13/64 DIA. & RE-LOCATED.	7-6-67	1837	L.A.K.	[Signature]													
C	HOLE "B" WAS 15/64 D	7-29-68	1902	M.S.	[Signature]													
MATERIAL		ALUMINUM																
STOCK SIZE		1/4 THICK																
THE TECHNICAL MATERIEL CORP. MAMARONECK, NEW YORK																		
PLATE, SWITCH																		
DRAWN		2024-T3																
CHECKED																		
ELEC. DES. APP.		S404 YEL IRIDITE																
MECH. DES. APP.																		
FINAL APPROVAL		PM1316 C																

REQ. PER UNIT	USED ON			PM1317	Ø
	MODEL	ASS'Y. NO.	DATE		
1	TLAA-2.5K	AS128	7-13-66		

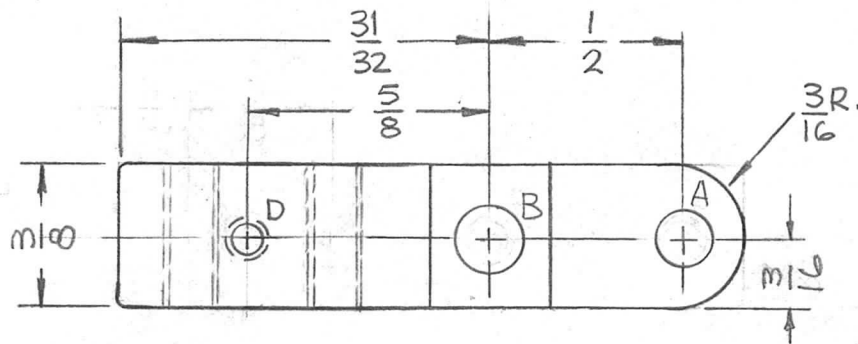


NOTE
REMOVE ALL ROUGH EDGES.

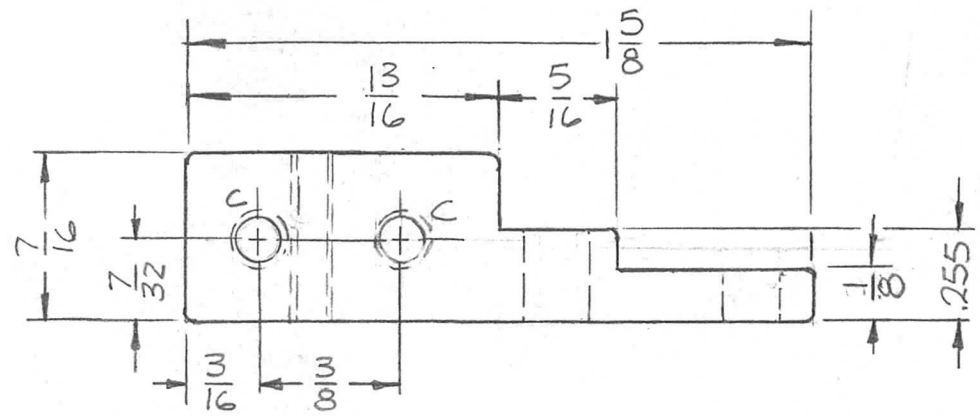
MATES WITH PM1275

REQ. ITEM	PART NO.	F. BUDETTI	DESCRIPTION	SYMBOL		
			THE TECHNICAL MATERIEL CORP. MAMARONECK. NEW YORK			
	STOCK SIZE		HUB, BANDSWITCH			
Ø	ORIGINAL RELEASE FOR PRODUCTION	11.18.66	Ø RME			
SYM	DESCRIPTION	DATE	CH. NO.	DRAFTS	CHECKER	ENG. APP.
UNLESS OTHERWISE SPECIFIED DIMENSIONS ARE IN INCHES AND INCLUDE CHEMICALLY APPLIED OR PLATED FINISHES		SCALE	DO NOT SCALE			
DECIMALS .X ± .05 .XX ± .01 .XXX ± .005	TOLERANCES	FRACTIONS ± 1/64 ANGLES ± 0° 30'	CODE A			
H.H., FM		TYPE & TEMPER S245 SILVER PLATE S243 SILVER KOTE	HEAT TREAT. SPEC.	DRAWN	CHECKED	FINAL APPROVAL
FINISH & SPEC. NO.		ELEC. DES. APP.	MECH. DES. APP.	PM1317 Ø		

TMC P/N	D	REQ. PER UNIT	USED ON			PM-1319	B
PM-1319	DRILL & TAP FOR 6-32	2	MODEL	ASS'Y. NO.	DATE		
PM-1319-2	11/64 DIA.		TLAA-25K	AS128	8-4-66		



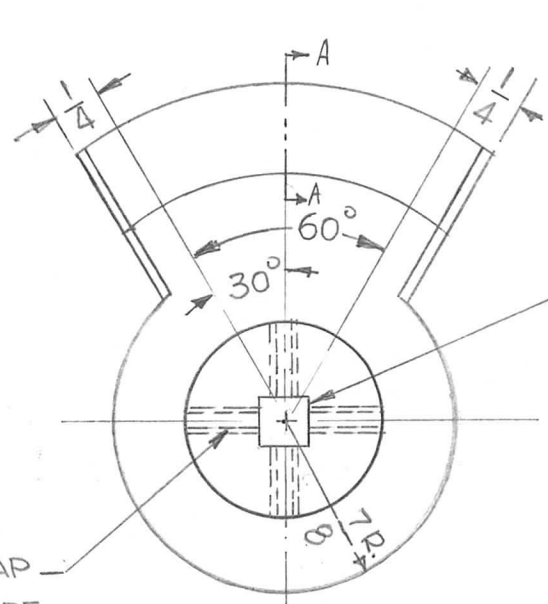
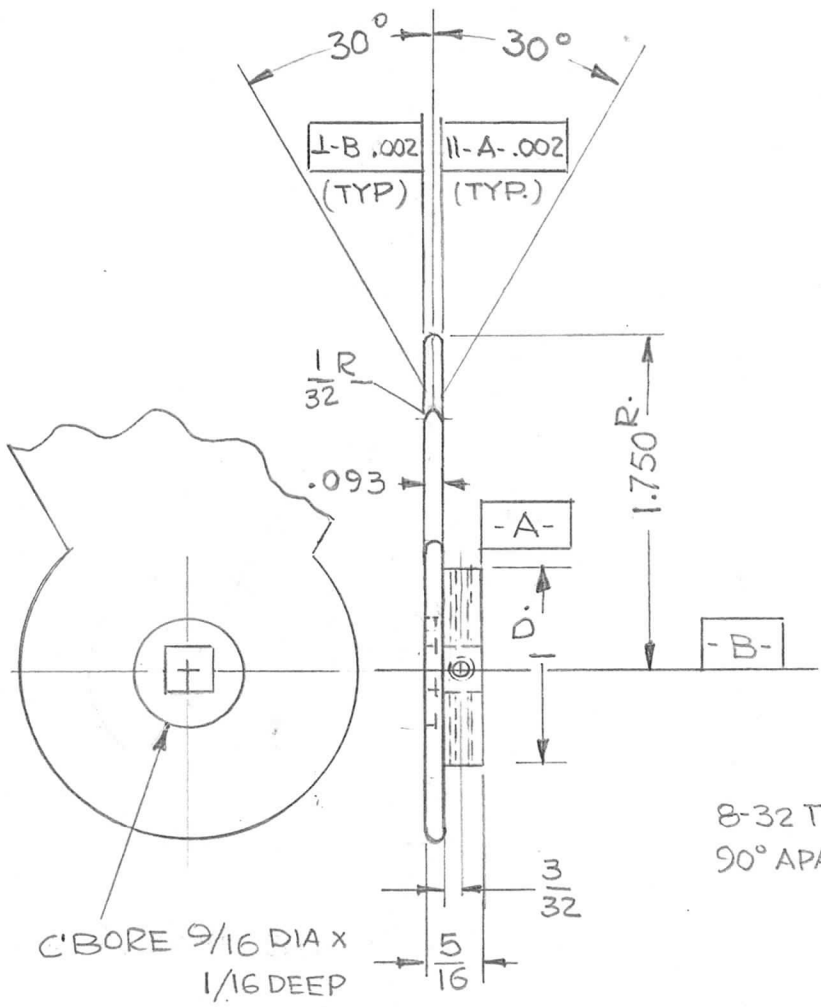
HOLES.
 A- 9/64 DIA. (1 REQ.)
 B- 11/64 DIA. (1 REQ.)
 C- DRILL & TAP FOR 8-32 (2 REQ.)
 D- SEE CHART (1 REQ.)



NOTE: ROUND ALL CORNERS & SHARP EDGES.

SYM	DESCRIPTION	DATE	CH. NO.	DRAFTS	CHECKER	ENG. APP.	REQ. ITEM	PART NO.	F. BUDETTI	DESCRIPTION	SYMBOL	
B	ADD P/N CHIT TO INC-2	9-8-70	19971	GE	FB/CW		AS NOTED			THE TECHNICAL MATERIEL CORP. MAMARONECK. NEW YORK	B	
A	1/8 DIM WAS 3/16	1.24.68	18728	RME	FB		STOCK SIZE					
Ø	ORIGINAL RELEASE FOR PRODUCTION	11.18.66	Ø	RME			BRASS			BASE, SWITCH CONTACT		
							MATERIAL					
	UNLESS OTHERWISE SPECIFIED DIMENSIONS ARE IN INCHES AND INCLUDE CHEMICALLY APPLIED OR PLATED FINISHES	SCALE	2:1				1/2 HARD					
	DECIMALS .X ± .05 .XX ± .01 .XXX ± .005	FRACTIONS ± 1/64 ANGLES ± 0° 30'	CODE	A				TYPE & TEMPER S245 SILVER PLATE S423 SILVER KOTE	HEAT TREAT. SPEC.	DRAWN	CHECKED	FINAL APPROVAL
	TOLERANCES						FINISH & SPEC. NO.	ELEC. DES. APP.	MECH. DES. APP.		PM-1319 B	

REQ. PER UNIT	USED ON			PM1320 \emptyset
	MODEL	ASS'Y. NO.	DATE	
1	TLAA-2.5K	AS128	8-9-66	

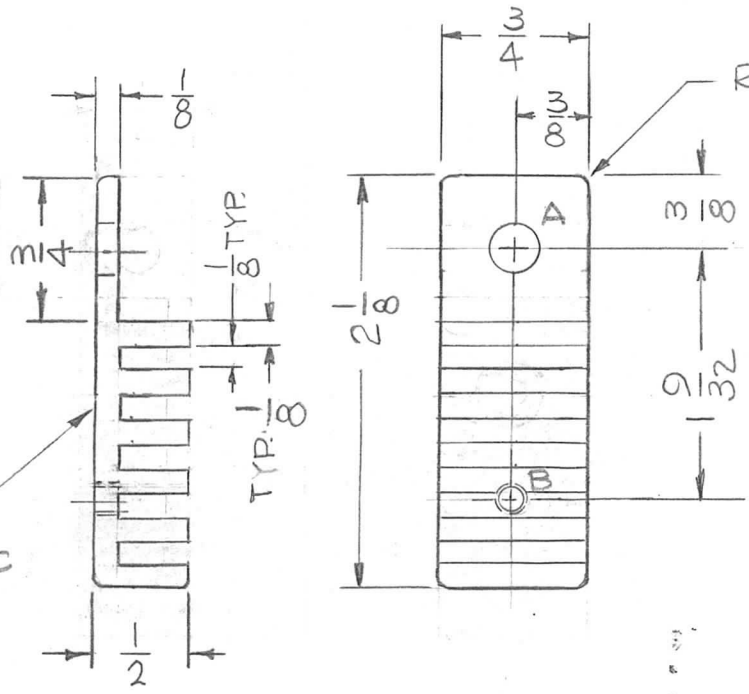


.250 SQ. BROACH
+.001
-.000

NOTE
ROUND ALL EDGES 1/64R
ALL DIM APPLY AFTER
PLATING.

SYM	DESCRIPTION	DATE	CH. NO.	DRAFTS	CHECKER	ENG. APP.	REQ. ITEM	PART NO.	BUDETTI DESCRIPTION	SYMBOL		
\emptyset	ORIGINAL RELEASE FOR PRODUCTION	11/17/66	\emptyset	CV			AS NOTED	THE TECHNICAL MATERIEL CORP. MAMARONECK, NEW YORK				
X ₁	BEVEL ADDED	8-25-66	X ₁	<i>MB</i>	<i>QAS</i>		STOCK SIZE					
X	EXP. RELEASE	8-9-66		G.D.L.			BRASS	ROTOR BANDSWITCH PI SECTION				
	UNLESS OTHERWISE SPECIFIED DIMENSIONS ARE IN INCHES AND INCLUDE CHEMICALLY APPLIED OR PLATED FINISHES	SCALE	1:1				HALF HARD					
	DECIMALS .X \pm .05 .XX \pm .01 .XXX \pm .005	FRACTIONS \pm 1/64 ANGLES \pm 0° 30'	CODE					TYPE & TEMPER S245 SILVER PLATE S423 SILVER KOTE	HEAT TREAT. SPEC.	DRAWN <i>QAS</i>	CHECKED <i>MB</i>	FINAL APPROVAL <i>QAS</i>
	TOLERANCES						FINISH & SPEC. NO.	ELEC. DES. APP.	MECH. DES. APP.	PM1320 \emptyset		

REQ. PER UNIT	USED ON			PM1322 ϕ
	MODEL	ASS'Y. NO.	DATE	
1	TLAA-2.5K	AS 128	8-13-66	



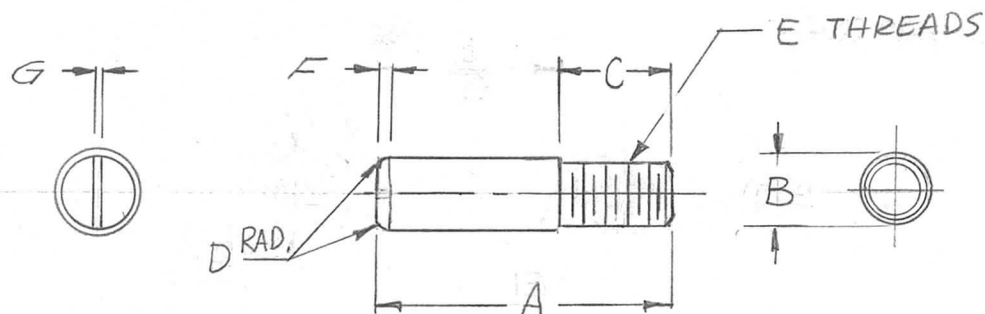
ROUND ALL SHARP EDGES
1/32R.

HOLE	DESCRIPTION	REQ
A	1/4 DIA.	1
B	6-32 TAP	1

MARK TMC P/N^o
1/8 HIGH GOTHIC
W/LATEST REV.
LETTER

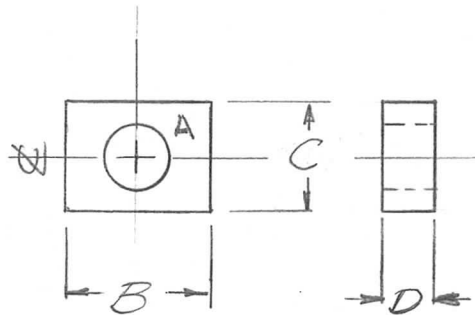
ϕ	ORIGINAL RELEASE FOR PRODUCTION	11-18-66	ϕ	RME			REQ. ITEM	PART NO.	BUDETTI DESCRIPTION	SYMBOL	
X2	2 1/8 WAS 2	8-30-66	X2	<i>SPK</i>		<i>ke</i>	AS NOTED		THE TECHNICAL MATERIEL CORP. MAMARONECK. NEW YORK		
X1	1/8 ADDED, 3/4 WAS 5/8 (DELE FIN)	8-24-66	X1	<i>SPK</i>	<i>QCB</i>	<i>QCB</i>	STOCK SIZE		WIPER, CONTACT ELECT		
X	EXP. RELEASE	8-13-66		G.D.L	<i>QCB</i>		ALUMINUM				
SYM	DESCRIPTION	DATE	CH. NO.	DRAFTS	CHECKER	ENG. APP.	MATERIAL				
UNLESS OTHERWISE SPECIFIED DIMENSIONS ARE IN INCHES AND INCLUDE CHEMICALLY APPLIED OR PLATED FINISHES		SCALE		1:1			2024-TA	8-13-66	<i>QCB</i>	<i>QCB</i>	<i>QCB</i>
DECIMALS .X \pm .05 .XX \pm .01 .XXX \pm .005		FRACTIONS \pm 1/64 ANGLES \pm 0° 30'		TOLERANCES		CODE A	TYPE & TEMPER S245 SILVER PLATE S423 SILVER KOTE	HEAT TREAT. SPEC.	DRAWN <i>QCB</i>	CHECKED <i>QCB</i>	FINAL APPROVAL <i>QCB</i>
							FINISH & SPEC. NO.	ELEC. DES. APP.	MECH. DES. APP.	PM1322 ϕ	

TMC	A	B	C	D	E	MAT'L	FINISH	REQ. PER UNIT	USED ON			PM1323 C
									MODEL	ASS'Y. NO.	DATE	
PM1323-	13/16	3/16	5/16	1/32	8-32	BRASS H.H.	S245 SIL. PL S423 SIL. KOTE	1	TLAA-25K	AS128	8-12-66	
PM1323-2	5/8	3/16	5/16	1/16	632	"	"	1	SWCA-3K	BMA129	11-14-66	
TMC	A	B	C	D	E	F	G	MAT'L.	FINISH			
PM1323-3	13/4	3/16	5/16	1/32	8-32	1/16	1/16	ST.STL.303	NONE			



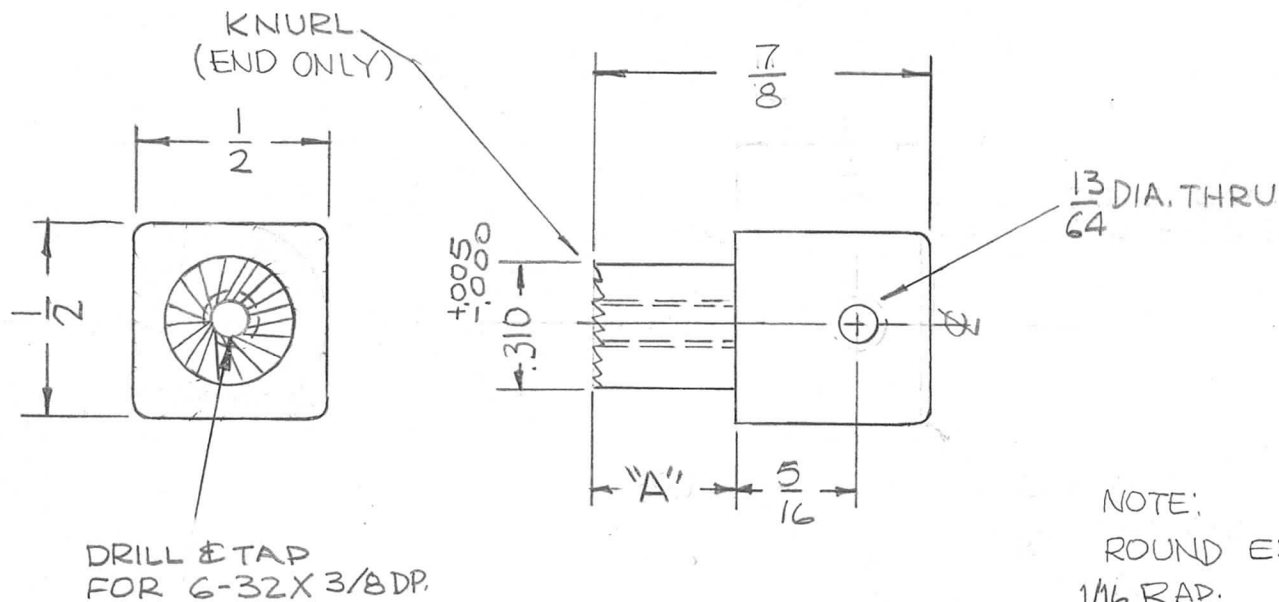
C	ADD F&G DET. & REV. - 3	5/27/70	19842	GE	<i>WAB</i>	FB	<i>WAB</i>						
B	PM1323-3 ADDED	5.21.69	19442	GE	<i>WAB</i>	FB	<i>WAB</i>						
A	-2 COL "A" WAS 1/2	2.1.67	1775A	WAW	<i>WAB</i>	<i>WAB</i>	<i>WAB</i>						
Ø	ORIGINAL RELEASE FOR PRODUCTION	11/17/66	Ø	CV									
X4	ON PM1323-2 E WAS 8-32	10-24-66	X4	<i>WAB</i>	<i>WAB</i>	<i>WAB</i>	<i>WAB</i>						
X3	ITEM 2 ADDED	10-14-66	X3	<i>WAB</i>	<i>WAB</i>	<i>WAB</i>	<i>WAB</i>						
X2	1/2 WAS 5/8, 13/16 WAS 15/16	8-22-66	X2	<i>WAB</i>	<i>WAB</i>	<i>WAB</i>	<i>WAB</i>						
X1	COMPL. REV. & REDRAWN.	8.15.66		GDL									
SYM	DESCRIPTION	DATE	CH. NO.	DRAFTS	CHECKER	ENG. APP.	REQ. ITEM	PART NO.	F. BUDETTI	DESCRIPTION	SYMBOL		
	UNLESS OTHERWISE SPECIFIED DIMENSIONS ARE IN INCHES AND INCLUDE CHEMICALLY APPLIED OR PLATED FINISHES	SCALE	2:1										
	DECIMALS .X ± .05 .XX ± .01 .XXX ± .005	FRACTIONS ± 1/64 ANGLES ± 0° 30'	CODE A	SEE CHART				TYPE & TEMPER.	HEAT TREAT. SPEC.	8-12-66 G.D.L.	DRAWN	CHECKED	FINAL APPROVAL
	TOLERANCES			SEE CHART				FINISH & SPEC. NO.		ELEC. DES. APP.	MECH. DES. APP.	PM1323 C	

TMC PT. NO.	A	B	C	D	REQ. PER UNIT	USED ON			PM1324 A
						MODEL	ASS'Y. NO.	DATE	
PM-1324	11/64	3/8	9/32	.125	15	TLAA-25K	AS128	6-13-66	
PM-1324-2	11/64	3/8	9/32	.090					



A	ADD P/N CHT. INC. - 2	9-8-70	19971	GE	CV	FB/CO	REQ. ITEM	PART NO.	BUDETTI	DESCRIPTION	SYMBOL
Q	ORIGINAL RELEASE FOR PRODUCTION	11/11/66		WTO		file	AS NOTED		THE TECHNICAL MATERIEL CORP. MAMARONECK, NEW YORK		
X1	1/64 DIA HOLE ADDED	11/10/66	X1	file	file		STOCK SIZE		SPACER		
X	EXP. RELEASE	8-13-66		G.D.L.			BRASS				
SYM	DESCRIPTION	DATE	CH. NO.	DRAFTS	CHECKER	ENG. APP.	MATERIAL				
UNLESS OTHERWISE SPECIFIED DIMENSIONS ARE IN INCHES AND INCLUDE CHEMICALLY APPLIED OR PLATED FINISHES		SCALE		2:1			HALF HARD	8-13-66	CF	MB	MA
							TYPE & TEMPER	HEAT TREAT. SPEC.	G.D.L.	CHECKED	FINAL APPROVAL
DECIMALS .X ± .05 .XX ± .01 .XXX ± .005		FRACTIONS ± 1/64 ANGLES ± 0° 30'		CODE A			S245 SILVER PLATE S423 SILVER KOTE		aa	aa	PM1324 A
TOLERANCES							FINISH & SPEC. NO.		ELEC. DES. APP.	MECH. DES. APP.	

TMC PART NO.	DIMENSION "A"	USED ON	ASSY NO.	QTY	REQ. PER UNIT	USED ON			PM1325	C
						MODEL	ASS'Y. NO.	DATE		
PM1325-	.395 \pm .005 - .000	TLAA 2.5K	AS128	7						
PM1325-2	.281 \pm .005 - .000	TLAA-1K	AS160	8						

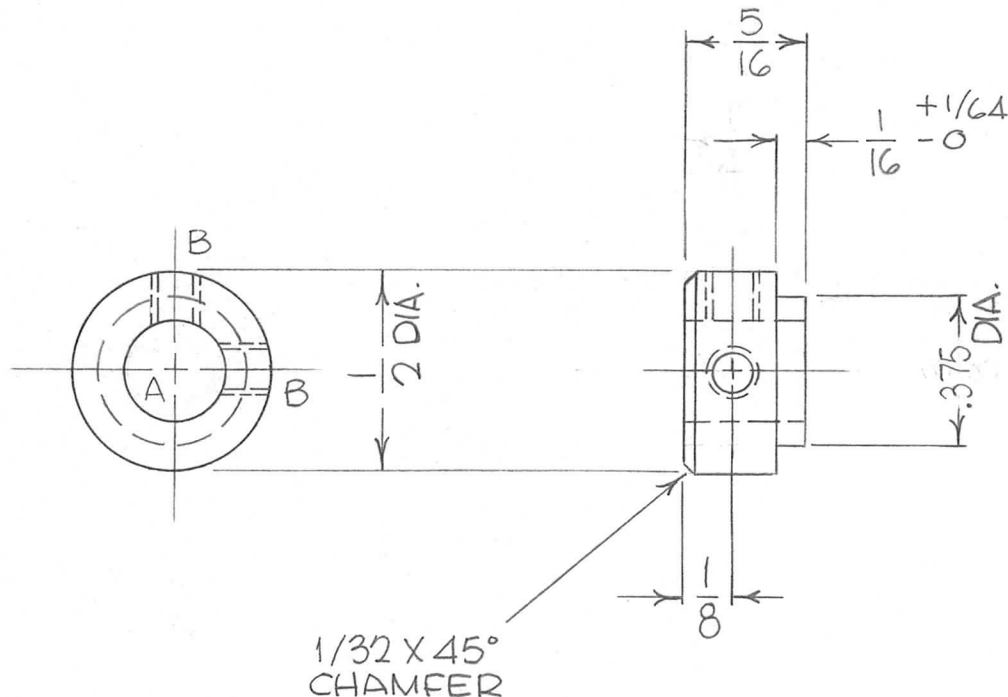


C	CHART ADDED-DIM A WAS .395	4-27-76	21360	GDL	CL	CL										
B	1/2 DIM DELE; .395 WAS .375	5-11-67	18209	LHD	FB	AD										
A	CHG'D RADIUS FR 1/8 TO 1/16	12-1-66	17362	RME	QCB	QCB	REQ. ITEM	PART NO.	F. BUDETTI	DESCRIPTION	SYMBOL					
Ø	ORIGINAL RELEASE FOR PRODUCTION	11/17/66	Ø	CV			AS SHOWN		THE TECHNICAL MATERIEL CORP. MAMARONECK. NEW YORK							
X ₁	7/8 WAS 11/16	8-31-66	X ₁				STOCK SIZE		CONTACT, ELECTRICAL							
X	COMPLETELY REVISED & REDRAWN	8-23-66	X	SRG	QCB	QCB	ALUMINUM									
SYM	DESCRIPTION	DATE	CH. NO.	DRAFTS	CHECKER	ENG. APP.	MATERIAL									
UNLESS OTHERWISE SPECIFIED DIMENSIONS ARE IN INCHES AND INCLUDE CHEMICALLY APPLIED OR PLATED FINISHES		SCALE		2:1			2024-T4		QCB	QCB	QCB					
DECIMALS .X \pm .05 .XX \pm .01 .XXX \pm .005		FRACTIONS \pm 1/64 ANGLES \pm 0° 30'		TOLERANCES		CODE A	TYPE & TEMPER S245 SILVER PLATE S423 SILVER KOTE		HEAT TREAT. SPEC.		DRAWN QCB		CHECKED QCB		FINAL APPROVAL QCB	
							FINISH & SPEC. NO.		ELEC. DES. APP.		MECH. DES. APP.		PM1325		C	

HOLE
 A-.251-.252 DIA. 1
 B- DRILL &
 TAP 6-32 2

REQ. PER UNIT	USED ON		
	MODEL	ASS'Y. NO.	DATE
1	VOX-7		8-18-66
1	LSCA-1		8-18-66
1	MMX-()		8-18-66

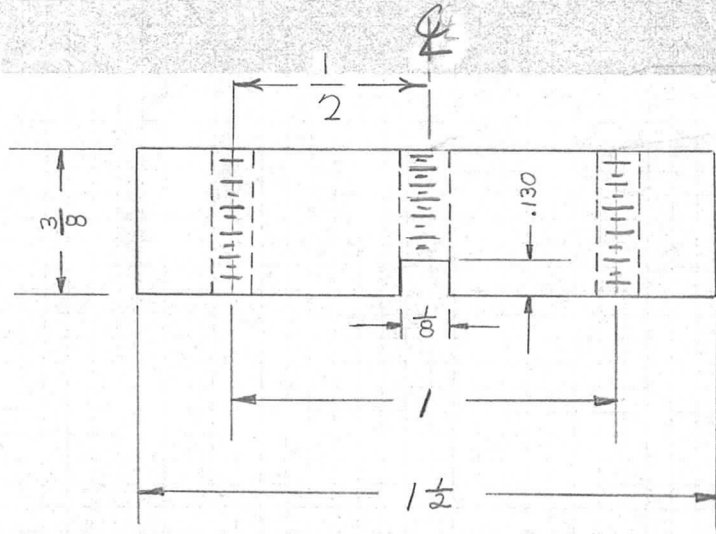
PM1327A



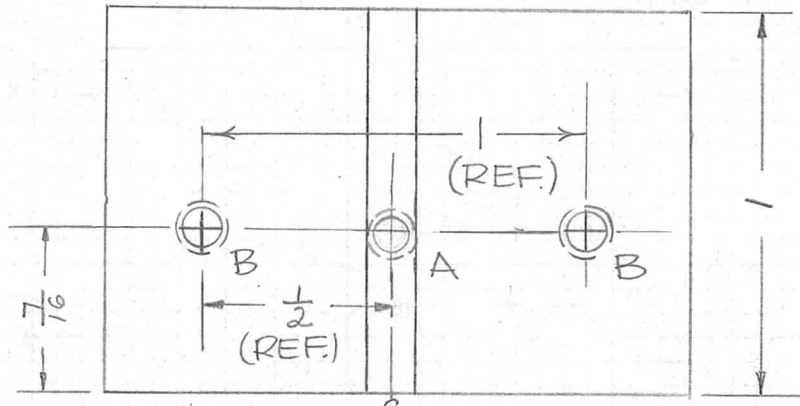
MATES WITH LD2146.

REQ.	ITEM	PART NO.	POSE	DESCRIPTION	SK3213LD2	SYMBOL
		AS NOTED				
		STOCK SIZE				
A	MOD. MMX-() WAS MMX-1	11-27-67	C.C	cdh		
Ø	ORIGINAL RELEASE FOR PRODUCTION	9.12.66	#	WTO		
SYM	DESCRIPTION	DATE	CH. NO.	DRAFTS	CHECKER	ENG. APP.
UNLESS OTHERWISE SPECIFIED DIMENSIONS ARE IN INCHES AND INCLUDE CHEMICALLY APPLIED OR PLATED FINISHES		SCALE		2:1		
DECIMALS .X ± .05 .XX ± .01 .XXX ± .005		FRACTIONS ± 1/64 ANGLES ± 0° 30'		TOLERANCES		
303		HEAT TREAT. SPEC.		MATERIAL		
S104-PASSIVATE		FINISH & SPEC. NO.		MATERIAL		
Jc		DRAWN		CHECKED		
9/19/66		MECH. DES. APP.		FINAL APPROVAL		
ELEC. DES. APP.		MECH. DES. APP.		PM1327A		

REQ. PER UNIT	USED ON			PM1328	Ø
	MODEL	ASS'Y. NO.	DATE		
1	TER3500		8-31-66		



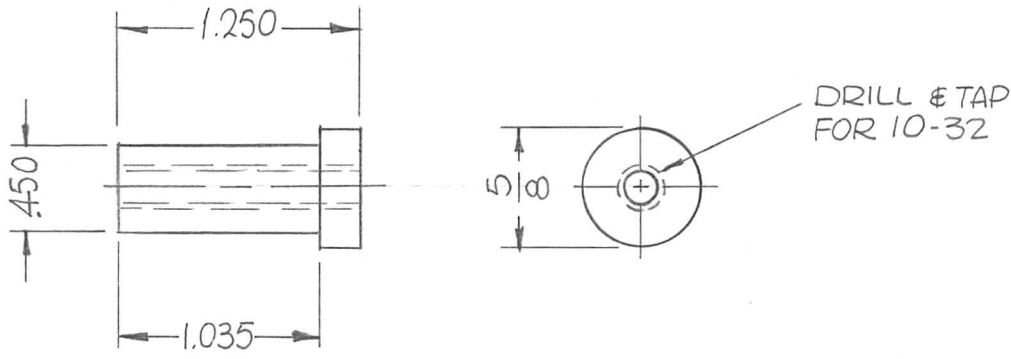
HOLES REQ
 A-DRILL & TAP 1
 8-32 THRU
 B-DRILL & TAP 2
 10-32 THRU



Note:
 USED w/UG 352*

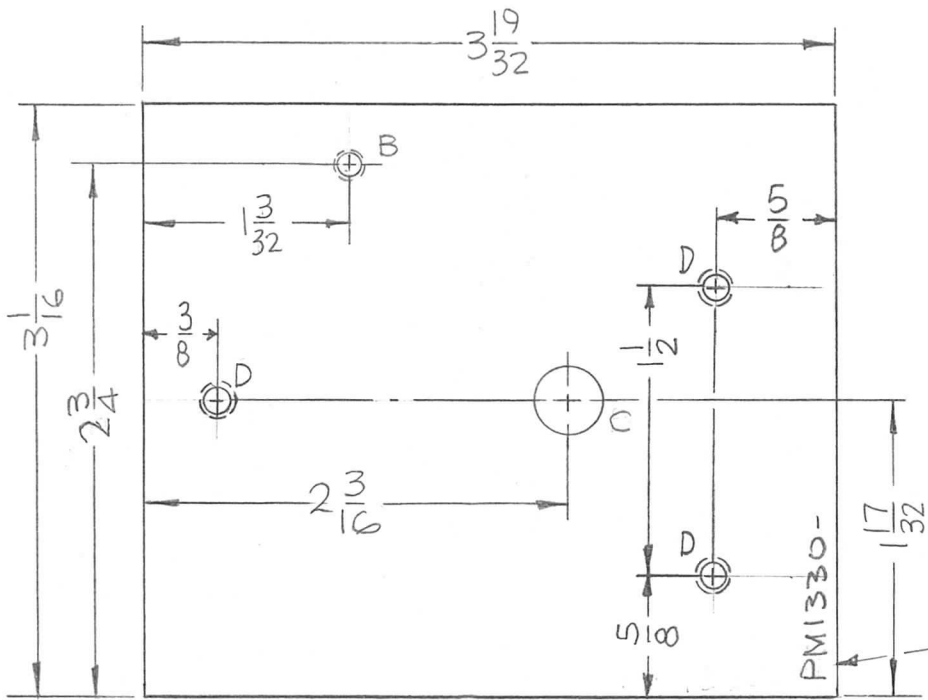
							REQ. ITEM	PART NO.	STURMER	DESCRIPTION	SYMBOL
							AS NOTED		THE TECHNICAL MATERIEL CORP.		
							STOCK SIZE		MAMARONECK, NEW YORK		
Ø	ORIGINAL RELEASE FOR PRODUCTION	4/16/66	Ø	CV			ALUMINUM		PLATE, FLAT		
SYM	DESCRIPTION	DATE	CH. NO.	DRAFTS	CHECKER	ENG. APP.	MATERIAL				
UNLESS OTHERWISE SPECIFIED DIMENSIONS ARE IN INCHES AND INCLUDE CHEMICALLY APPLIED OR PLATED FINISHES		SCALE				2024-T4		JC	JCB	FINAL APPROVAL	
DECIMALS .X ± .05 .XX ± .01 .XXX ± .005	TOLERANCES	FRACTIONS ± 1/64 ANGLES ± 0° 30'	CODE			S404 YELLOW IRIDITE			9-2-66	PM1328 Ø	
						FINISH & SPEC. NO.	ELEC. DES. APP.	MECH. DES. APP.			

REQ. PER UNIT	USED ON			PM1329	Ø
	MODEL	ASS'Y. NO.	DATE		
1	LPFA-10K		9-14-66		



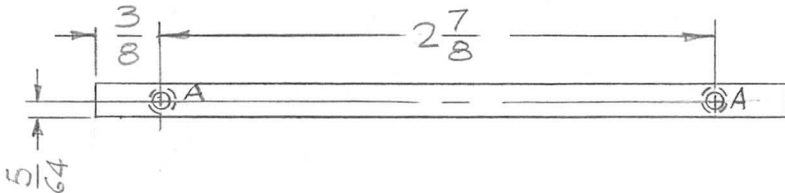
REQ.	ITEM	PART NO.	F. BUDETTI DESCRIPTION				SYMBOL
		AS SHOWN	THE TECHNICAL MATERIEL CORP. MAMARONECK, NEW YORK				
		STOCK SIZE	CONTACT, ELECTRICAL				
Ø		ALUMINUM					
X							
SYM	DESCRIPTION	DATE	CH. NO.	DRAFTS	CHECKER	ENG. APP.	
	UNLESS OTHERWISE SPECIFIED DIMENSIONS ARE IN INCHES AND INCLUDE CHEMICALLY APPLIED OR PLATED FINISHES	SCALE 1:1					
DECIMALS .X ± .05 .XX ± .01 .XXX ± .005	TOLERANCES	FRACTIONS ± 1/64 ANGLES ± 0° 30'	CODE A				
		2024-T4					
		S245 SILVER PLATE S423 SILVER KOTE					
		FINISH & SPEC. NO.	ELEC. DES. APP.	MECH. DES. APP.			PM1329 Ø

REQ. PER UNIT	USED ON			PM1330 A
	MODEL	ASS'Y. NO.	DATE	
1	TAA-2.5K	A5498	10-5-66	



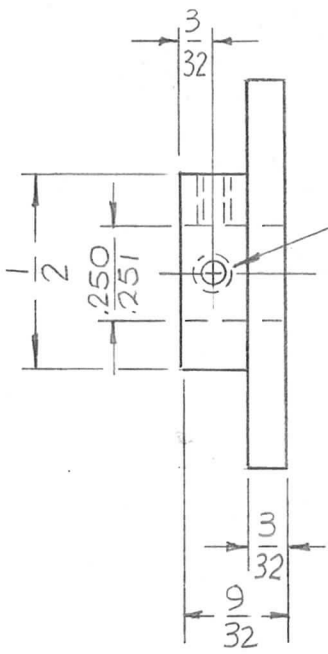
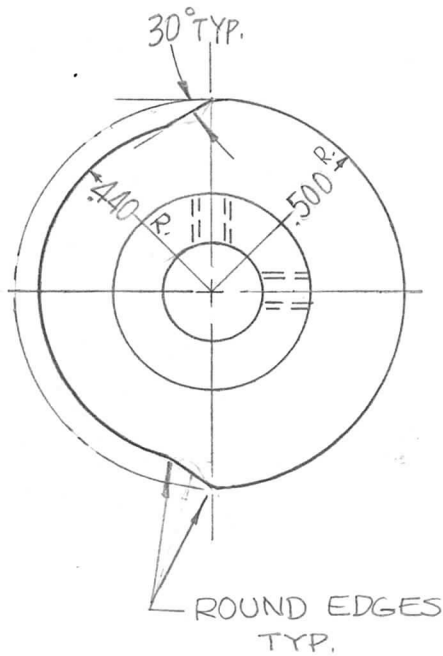
HOLES	DESCRIPTION	REQ.
A	DRILL & TAP FOR 4-40 X 3/8 DP	2
B	DRILL & TAP FOR 8-32 THRU	1
C	3/8 DIA.	1
D	DRILL & TAP FOR 6-32	3

MARK TMC P/N
1/8 HIGH GOTHIC
W/LATEST REV.
LETTER.



A	FINISH WAS S245 SILVER PLATE S423 SILVER KOTE	4-24-68	18893	NY	FB	FB
Ø	ORIGINAL RELEASE FOR PRODUCTION	12/2/66	Ø	CV		FB
X2	1" D HOLE WAS 1/8, 3D ADDED	11-23-66	X2			FB
X1	"D" HOLE HOLE ADDED	11-8-66	X1			FB
X	EXP. RELEASE	10-5-66	X			FB
SYM	DESCRIPTION	DATE	CH. NO.	DRAFTS	CHECKER	ENG. APP.
UNLESS OTHERWISE SPECIFIED DIMENSIONS ARE IN INCHES AND INCLUDE CHEMICALLY APPLIED OR PLATED FINISHES		SCALE 1:1		2024-T3		
DECIMALS .X ± .05 .XX ± .01 .XXX ± .005		FRACTIONS ± 1/64 ANGLES ± 0° 30'		TOLERANCES		CODE A
				5/32 THICK STOCK SIZE		THE TECHNICAL MATERIEL CORP. MAMARONECK. NEW YORK
				ALUMINUM		SHIELD, RF
				MATERIAL		
				TYPE & TEMPER		S404 YEL IDIRITE
				HEAT TREAT. SPEC.		
				DRAWN		FB
				CHECKED		FB
				FINAL APPROVAL		FB
				FINISH & SPEC. NO.		PM1330 A
				ELEC. DES. APP.		
				MECH. DES. APP.		

REQ. PER UNIT	USED ON			PM1331	Ø
	MODEL	ASS'Y. NO.	DATE		
1	TLAA-2.5K	BMA 125	10-4-66		

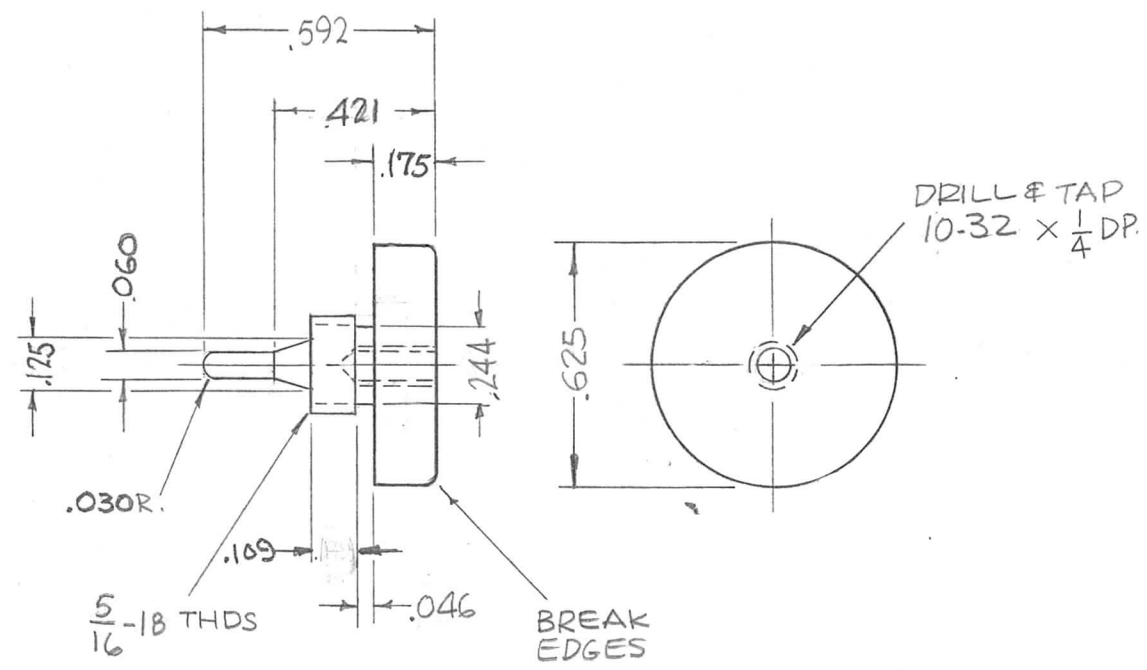


DRILL & TAP FOR 4-40 90° APART

							REQ. ITEM	PART NO.	F. BUDETTI DESCRIPTION	SYMBOL	
							AS SHOWN		THE TECHNICAL MATERIEL CORP. MAMARONECK. NEW YORK		
Ø	ORIGINAL RELEASE FOR PRODUCTION	11/6/66	Ø	CV			STOCK SIZE		CAM, SWITCH		
X	EXP. RELEASE	10-4-66	X	<i>MS</i>	<i>169</i>	<i>QR</i>	BRASS				
SYM	DESCRIPTION	DATE	CH. NO.	DRAFTS	CHECKER	ENG. APP.	MATERIAL				
UNLESS OTHERWISE SPECIFIED DIMENSIONS ARE IN INCHES AND INCLUDE CHEMICALLY APPLIED OR PLATED FINISHES		SCALE					H.H.		<i>MS</i>	<i>QR</i>	<i>QR</i>
		2:1					TYPE & TEMPER		DRAWN		CHECKED
							HEAT TREAT. SPEC.		MECH. DES. APP.		FINAL APPROVAL
DECIMALS .X ± .05 .XX ± .01 .XXX ± .005	TOLERANCES	FRACTIONS ± 1/64 ANGLES ± 0° 30'	CODE A				S135 NICKEL PLATE		<i>MS</i>	<i>QR</i>	PM1331
							FINISH & SPEC. NO.		ELEC. DES. APP.		Ø

REQ. PER UNIT	USED ON		
	MODEL	ASS'Y. NO.	DATE
1	TLAA-2.5K		11-30-66
1	RAK-110-2		

PM1332 \emptyset



MATES WITH PX1007

SYM	DESCRIPTION	DATE	CH. NO.	DRAFTS	CHECKER	ENG. APP.	REQ. ITEM	PART NO.	F. BUDETTI DESCRIPTION	SYMBOL	
\emptyset	ORIGINAL RELEASE FOR PRODUCTION	3.1.67					AS SHOWN		THE TECHNICAL MATERIEL CORP. MAMARONECK, NEW YORK	\emptyset	
X ₁	5/16-18 WAS 1/4-20, 224 WAS 187	1-19-67	X ₁				STOCK SIZE				
X	EXP. RELEASE	11-30-66	X				BRASS	BUTTON, CONTACT			
								MATERIAL			
							HALF HARD				
							TYPE & TEMPER	HEAT TREAT. SPEC.	DRAWN	CHECKED	FINAL APPROVAL
							5245 SILVER PLATE				
							5423 SILVER KOTE				
							FINISH & SPEC. NO.		ELEC. DES. APP.	MECH. DES. APP.	

UNLESS OTHERWISE SPECIFIED
DIMENSIONS ARE IN INCHES AND INCLUDE
CHEMICALLY APPLIED OR PLATED FINISHES

DECIMALS
.X \pm .05
.XX \pm .01
.XXX \pm .005

FRACTIONS
 \pm 1/64
ANGLES
 \pm 0° 30'

TOLERANCES

SCALE
2:1

CODE
A

HALF HARD

5245 SILVER PLATE
5423 SILVER KOTE

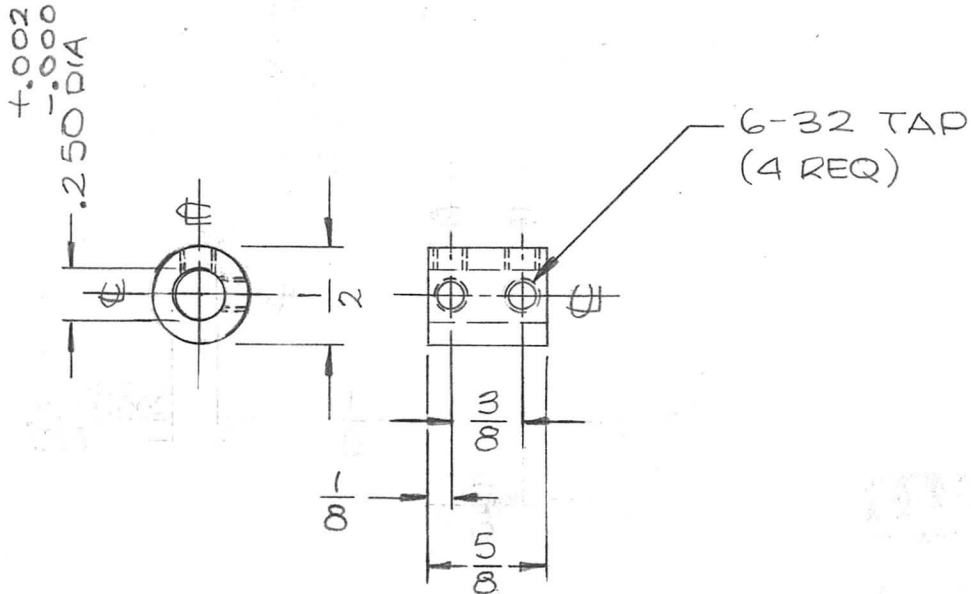
FINISH & SPEC. NO.

DRAWN
2/28/67

CHECKED
JEE

FINAL APPROVAL
PM1332 \emptyset

APPLICATION			REVISIONS						
QTY	MODEL USED ON	ASS'Y NO.	LTR	DESCRIPTION	DATE	E.M.N.NO	DRAFT	CHKD	APPD
7	VOX-7	BMA114	X	EXPERIMENTAL RELEASE	11/7/67				
5	MMX-()	BMA105	X1	REMOVED HFSR-4	11-10-67		H.G.		
			Ø	ORIGINAL RELEASE FOR PRODUCTION	5/9/68	Ø	H.G.		

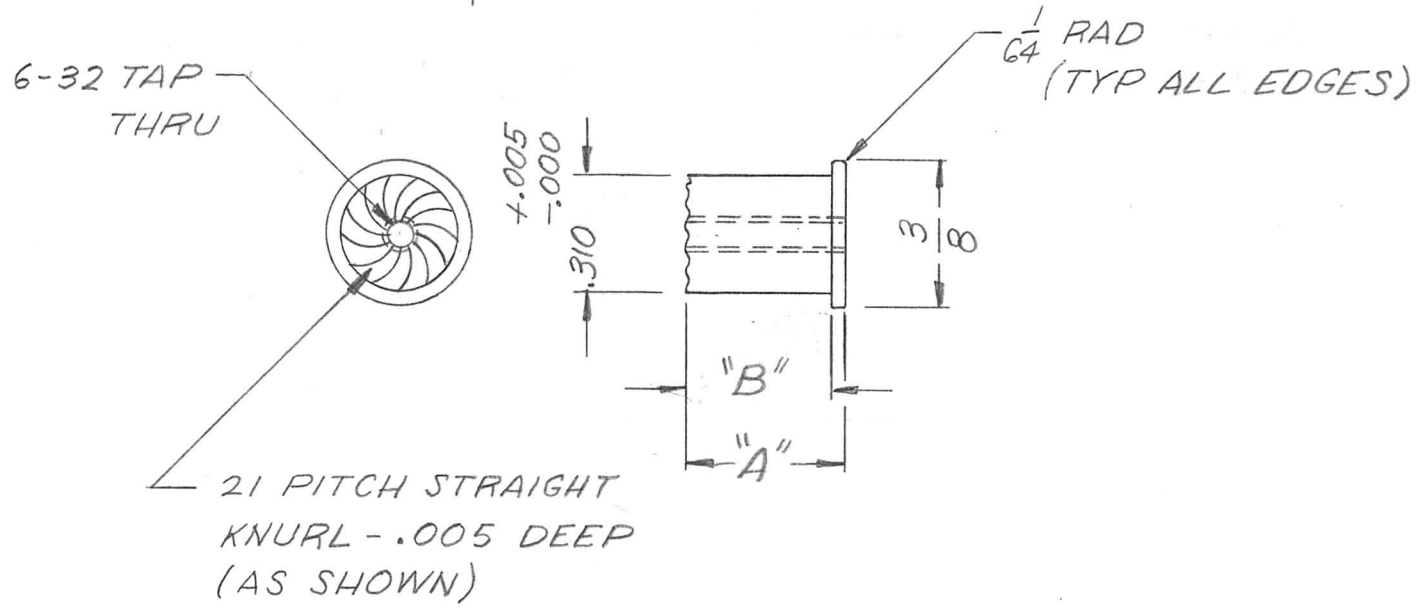


UNLESS OTHERWISE SPECIFIED DIMENSIONS ARE IN INCHES AND INCLUDE CHEMICALLY APPLIED OR PLATED FINISHES		REQ'D	ITEM	PART NUMBER	DESCRIPTION	SYM.
DECIMALS: .X ± .05, .XX ± .01, .XXX ± .005 FRACTIONS: 1/64, ANGLES: 0°-30° TOLS.		O. POSE LIST OF MATERIAL SK3213 M568 THE TECHNICAL MATERIEL CORP. MAMARONECK, NEW YORK COUPLING				
MATERIAL BRASS, FREE MACHINING FINISH S135 NICKEL PLATE S401-451		FINAL APPROVAL <i>[Signature]</i>	MECH. DES. <i>[Signature]</i>	ELECT. DES. <i>[Signature]</i>	CHECKED <i>[Signature]</i>	DRAWN <i>[Signature]</i>
		DATE	DATE	DATE	DATE	DATE
		5-23-68	5-14-68	4-29-68	1-18-67	

NOTICE TO PERSONS RECEIVING THIS DRAWING THE TECHNICAL MATERIEL CORPORATION claims proprietary right in the material disclosed hereon. This drawing is issued in confidence for engineering information only and may not be reproduced or used to manufacture anything shown hereon without permission from THE TECHNICAL MATERIEL CORPORATION to the user. This drawing is loaned for mutual assistance and is subject to recall at any time.				SIZE A	CODE IDENT. NO. 82679	DWG NO. PM1333	ISSUE Ø
SCALE 1:1		SHEET OF					

APPLICATION			REVISIONS							
QTY	MODEL USED ON	ASS'Y NO.	LTR	DESCRIPTION	DATE	E.M.N.NO	DRAFT	CHKD	APPD	
1	TLAA-2.5K		X	EXPERIMENTAL RELEASE	3-9-67		UFD	JEL	RB	
1	TLAA-1K	AS160	Ø	ORIG RELEASE FOR PROD	3/31/67	Ø	CV			
			A	ON DICT. DIM "B" WAS .375 & A WAS 13/32 - CHART ADD.	4-28-76	21360	GDL	CL	CL	

TMC PART NO.	DIM.		QTY
	"A"	"B"	
PM1336-	13/32	.375	1
PM1336-2	11/32	.312	1



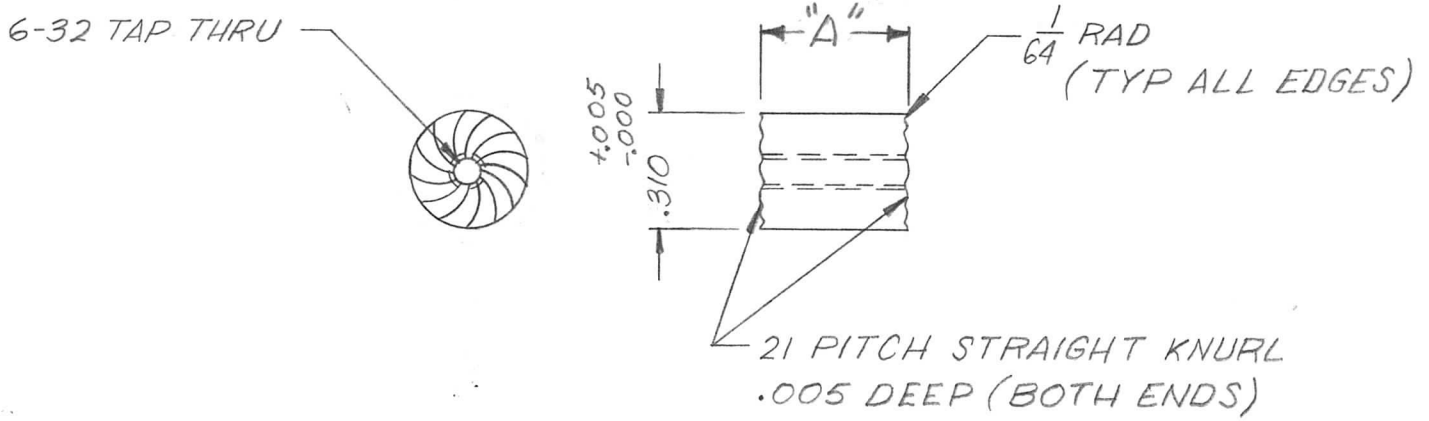
FINISH:
 S245 SILVER PLATE
 S423 SILVER KOTE

MATERIAL:
 3/8 DIA ALUMINUM (2024-T4)

UNLESS OTHERWISE SPECIFIED DIMENSIONS ARE IN INCHES AND INCLUDE CHEMICALLY APPLIED OR PLATED FINISHES		REQ'D	ITEM	PART NUMBER	DESCRIPTION	SYM.
DECIMALS .X ± .05 .XX ± .01 .XXX ± .005		FRACTIONS 1/64 ANGLES 0° - 30°		F. BUDETTI LIST OF MATERIAL		
MATERIAL SEE NOTE		MECH. DES.	DATE	THE TECHNICAL MATERIEL CORP. MAMARONECK, NEW YORK		
FINISH SEE NOTE		ELECT. DES.	DATE	CONTACT, SHOULDER, ELEC.		
		CHECKED	DATE			
		DRAWN	DATE			
NOTICE TO PERSONS RECEIVING THIS DRAWING THE TECHNICAL MATERIEL CORPORATION claims proprietary right in the material disclosed hereon. This drawing is issued in confidence for engineering information only and may not be reproduced or used to manufacture anything shown hereon without permission from THE TECHNICAL MATERIEL CORPORATION to the user. This drawing is loaned for mutual assistance and is subject to recall at any time.				SIZE A	CODE IDENT. NO. 82679	DWG NO. PM1336
				SCALE		ISSUE A
				SHEET		OF

APPLICATION			REVISIONS						
QTY	MODEL USED ON	ASS'Y NO.	LTR	DESCRIPTION	DATE	E.M.N.NO	DRAFT	CHKD	APPD
1	TLAA-2.5K		X	EXPERIMENTAL RELEASE	3.10.67		UW		
	TLAA-1K	AS160	Ø	ORIG RELEASE FOR PROD	3-31-67		CV		
			A	ON PICT. "A" WAS.375.CHART ADD	3-27-76	21360	GD.L	Ch	Ch

TMC PART NO	DIM. "A"	QTY
PM1337-	.375	1
PM1337-2	.187	2



FINISH:

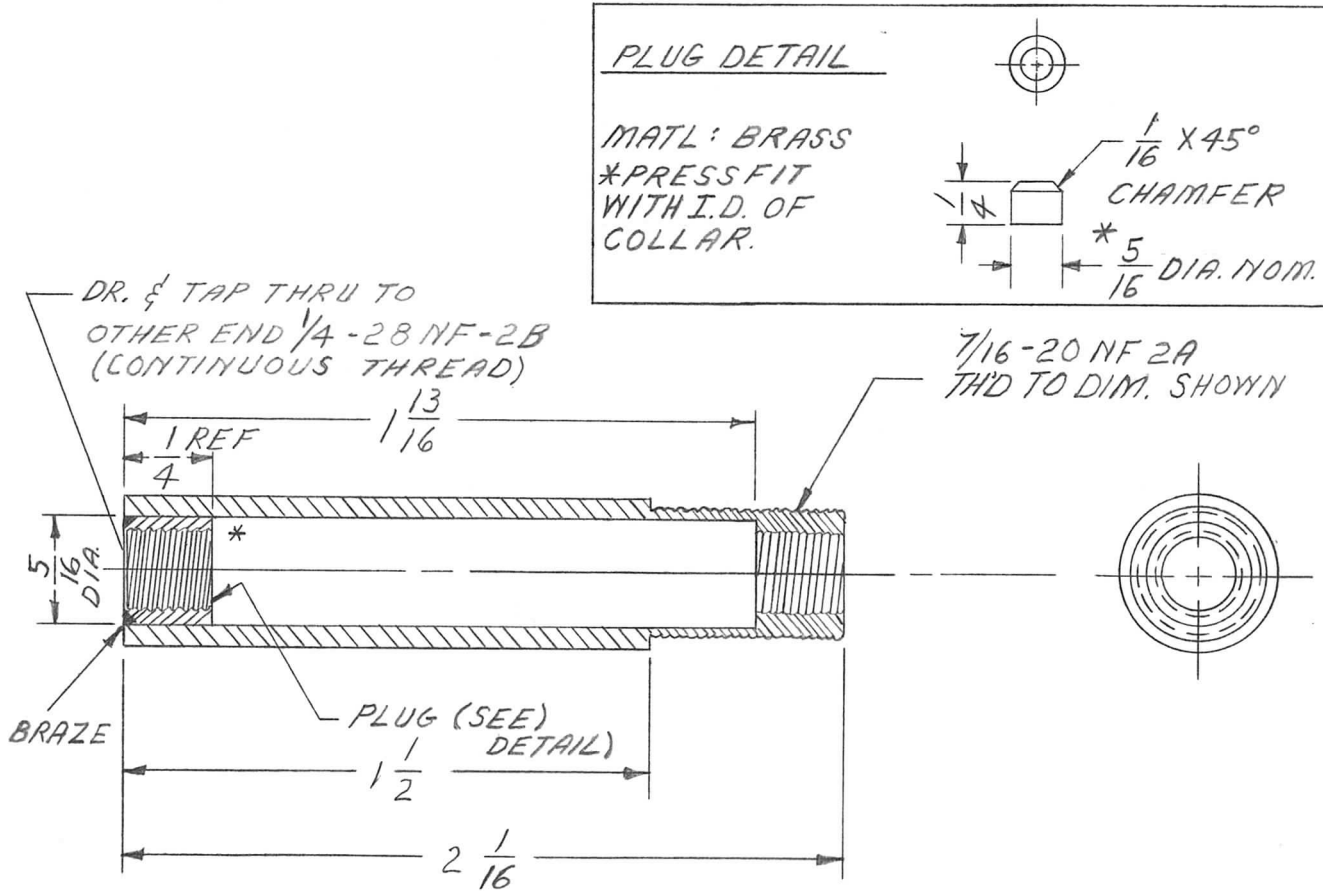
S245 SILVER PLATE
S423 SILVER KOTE

MATERIAL:

3/8 ALUMINUM (2024-T4)

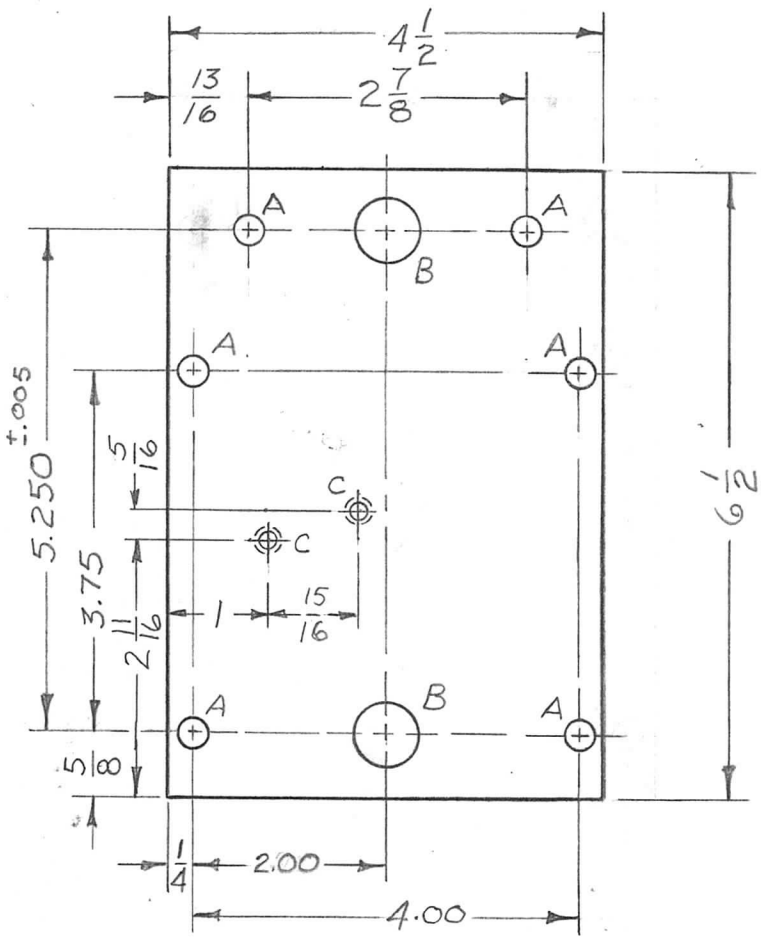
UNLESS OTHERWISE SPECIFIED DIMENSIONS ARE IN INCHES AND INCLUDE CHEMICALLY APPLIED OR PLATED FINISHES		REQ'D	ITEM	PART NUMBER	DESCRIPTION	SYM.	
DECIMALS .X ± .05 .XX ± .01 .XXX ± .005		F. BUDETTI		LIST OF MATERIAL			
FRACTIONS 1/64 ANGLES 0° - 30°		FINAL APPROVAL		DATE	THE TECHNICAL MATERIEL CORP.		
MATERIAL SEE NOTE		MECH. DES.		DATE	MAMARONECK, NEW YORK		
FINISH SEE NOTE		ELECT. DES.		DATE	CONTACT, ELEG.		
		CHECKED		DATE			
		DRAWN		DATE			
NOTICE TO PERSONS RECEIVING THIS DRAWING THE TECHNICAL MATERIEL CORPORATION claims proprietary right in the material disclosed hereon. This drawing is issued in confidence for engineering information only and may not be reproduced or used to manufacture anything shown hereon without permission from THE TECHNICAL MATERIEL CORPORATION to the user. This drawing is loaned for mutual assistance and is subject to recall at any time.				SIZE A	CODE IDENT. NO. 82679	DWG NO. PM1337	ISSUE A
				SCALE	SHEET		OF

APPLICATION			REVISIONS						
QTY	MODEL USED ON	ASS'Y NO.	LTR	DESCRIPTION	DATE	E.M.N.NO	DRAFT	CHKD	APPD
1	A0-100	A4585	X	EXPERIMENTAL RELEASE	3-15-67			L.A.K.	file
1	A0-103	A4585	Ø	ORIG RELEASE FOR PROD	4-3-67	Ø	CV		



UNLESS OTHERWISE SPECIFIED DIMENSIONS ARE IN INCHES AND INCLUDE CHEMICALLY APPLIED OR PLATED FINISHES		REQ'D	ITEM	PART NUMBER	DESCRIPTION	SYM.	
DECIMALS .X ± .05 .XX ± .01 .XXX ± .005 FRACTIONS 1/64 TOLS. ANGLES 0° - 30'		TO POSE LIST OF MATERIAL					
MATERIAL 7/16 DIA. BRASS, HALF HARD FINISH NONE		FINAL APPROVAL <i>[Signature]</i>		DATE 4/3/67		THE TECHNICAL MATERIEL CORP. MAMARONECK, NEW YORK <i>COLLAR, CORE STUD</i>	
		MECH. DES.		DATE			
		ELECT. DES.		DATE			
		CHECKED <i>[Signature]</i>		DATE			
		DRAWN LK		DATE 3/10/67			
NOTICE TO PERSONS RECEIVING THIS DRAWING THE TECHNICAL MATERIEL CORPORATION claims proprietary right in the material disclosed hereon. This drawing is issued in confidence for engineering information only and may not be reproduced or used to manufacture anything shown hereon without permission from THE TECHNICAL MATERIEL CORPORATION to the user. This drawing is loaned for mutual assistance and is subject to recall at any time.				SIZE A	CODE IDENT. NO. 82679	DWG NO. PM1339	ISSUE Ø
SCALE <i>M/E</i>			SHEET 1		OF 1		

APPLICATION			REVISIONS						
QTY	MODEL USED ON	ASS'Y NO.	LTR	DESCRIPTION	DATE	E.M.N.NO	DRAFT	CHKD	APPD
1	BCT-10KA		X	EXP. RELEASE	10/17/67		Emp	MPY	WZ
			X1	COMPLETELY REVISED	10/31/67		Emp	MPY	WZ
			X2	ADDED 2C HOLES	5/10/68		HG.	WZ	OB
			Ø	ORIGINAL RELEASE FOR PRODUCTION	5/10/68		HG.	WZ	JAO



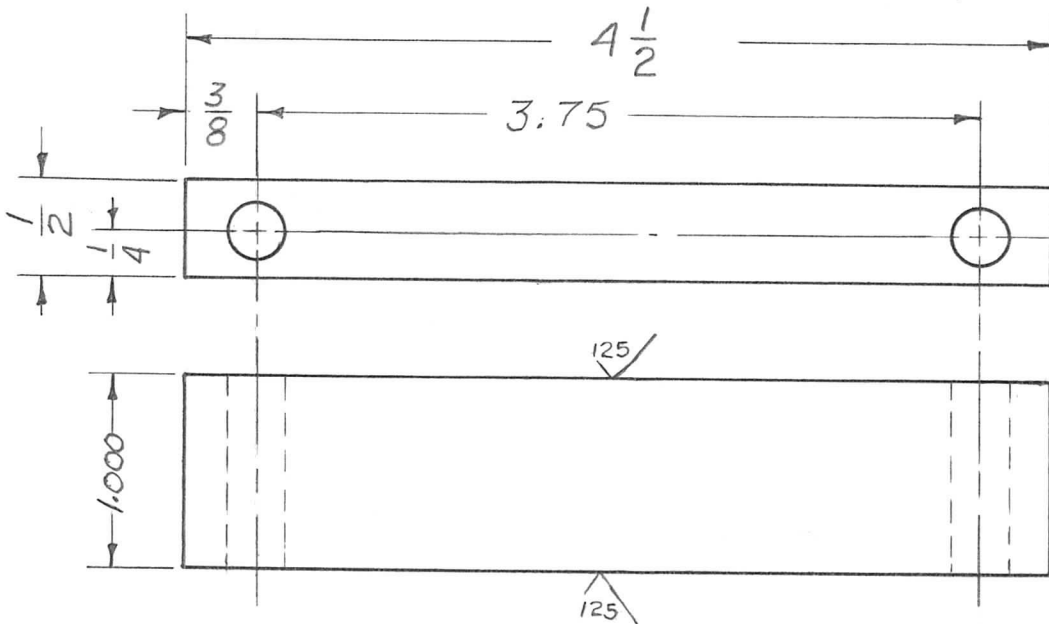
HOLES	DESCRIPTION	REQ.
A	9/32 DIA.	6
B	.625 ±.0005 ±.0000	2
C	DRILL & TAP 4-40	2

① PRESS FIT IN "B" HOLES

UNLESS OTHERWISE SPECIFIED DIMENSIONS ARE IN INCHES AND INCLUDE CHEMICALLY APPLIED OR PLATED FINISHES	2	1	BB 126-5	BRG, BALL, ANNL	B
DECIMALS .X ± .05 .XX ± .01 .XXX ± .005	REQ'D	ITEM	PART NUMBER	DESCRIPTION	SYM.
FRACTIONS 1/64 ANGLES 0° - 30'	F. BUDETTI LIST OF MATERIAL				
MATERIAL 1/4 THK. ALUM. 2024-T4	FINAL APPROVAL	MECH. DES.	ELECT. DES.	THE TECHNICAL MATERIEL CORP. MAMARONECK, NEW YORK	
FINISHES 409 YELLOW IRIDITE	DATE 5-10-68	DATE 5-10-68	DATE	PLATE, GEAR FRONT	
S 401-451	CHECKED	DATE 4-1-68	DATE		
	DRAWN	DATE 10/17/67	DATE		
NOTICE TO PERSONS RECEIVING THIS DRAWING THE TECHNICAL MATERIEL CORPORATION claims proprietary right in the material disclosed hereon. This drawing is issued in confidence for engineering information only and may not be reproduced or used to manufacture anything shown hereon without permission from THE TECHNICAL MATERIEL CORPORATION to the user. This drawing is loaned for mutual assistance and is subject to recall at any time.				SIZE A	CODE IDENT. NO. 82679
				DWG NO. PM1341	ISSUE Ø
SCALE 1:2			SHEET OF		

APPLICATION			REVISIONS							
QTY	MODEL USED ON	ASS'Y NO.	LTR	DESCRIPTION	DATE	E.M.N.NO	DRAFT	CHKD	APPD	
2	BCT-10KA		X	EXP. RELEASE	10/18/67		Enf	MP	AK	
			Ø	ORIGINAL RELEASE FOR PRODUCTION	4/1/68	Ø	HS		JAD	

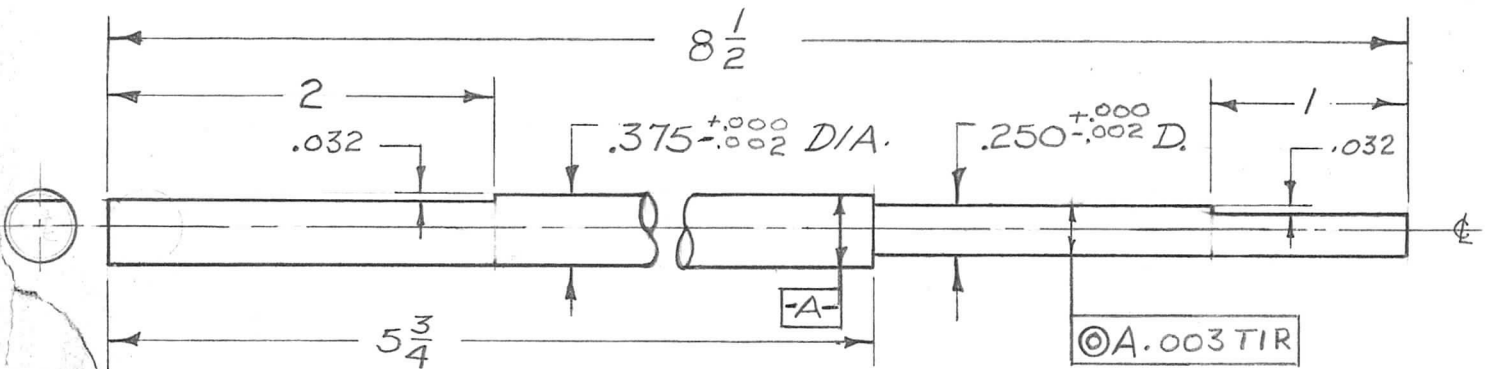
HOLE
9/32 DIA. (2 REQ.)



UNLESS OTHERWISE SPECIFIED DIMENSIONS ARE IN INCHES AND INCLUDE CHEMICALLY APPLIED OR PLATED FINISHES		REQ'D	ITEM	PART NUMBER	DESCRIPTION	SYM.
DECIMALS .X ± .05 .XX ± .01 .XXX ± .005		FRACTIONS 1/64 ANGLES 0° -30'		F. BUDETTI LIST OF MATERIAL		
MATERIAL 1/2 THK ALUM. 2024-T4		FINAL APPROVAL SPM	DATE 4-7-68	THE TECHNICAL MATERIEL CORP. MAMARONECK, NEW YORK		
FINISH S404 YELLOW IRIDITE		MECH. DES. AP	DATE 4-2-68	PLATE, GEAR SIDE		
S 401 - 451		ELECT. DES.	DATE			
		CHECKED MP	DATE 4-1-68			
		DRAWN Enf	DATE 10/18/67			

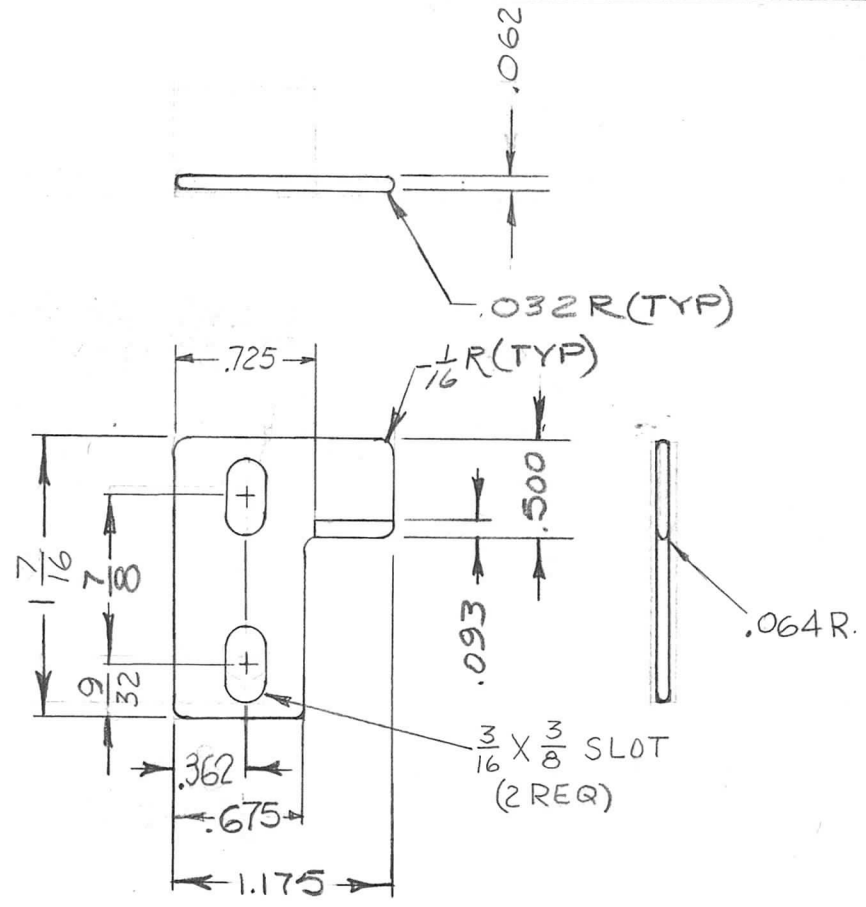
NOTICE TO PERSONS RECEIVING THIS DRAWING THE TECHNICAL MATERIEL CORPORATION claims proprietary right in the material disclosed hereon. This drawing is issued in confidence for engineering information only and may not be reproduced or used to manufacture anything shown hereon without permission from THE TECHNICAL MATERIEL CORPORATION to the user. This drawing is loaned for mutual assistance and is subject to recall at any time.				SIZE A	CODE IDENT. NO. 82679	DWG NO. PM 1342	ISSUE Ø
SCALE 1:1			SHEET		OF		

APPLICATION			REVISIONS						
QTY	MODEL USED ON	ASS'Y NO.	LTR	DESCRIPTION	DATE	E.M.N.NO	DRAFT	CHKD	APPD
1	BCT-10KA		X	EXP. RELEASE	10/23/67		<i>Enf</i>	<i>MB</i>	<i>AK</i>
			Ø	ORIGINAL RELEASE FOR PRODUCTION	4/1/68	Ø	<i>Heg</i>		<i>JAD</i>



UNLESS OTHERWISE SPECIFIED DIMENSIONS ARE IN INCHES AND INCLUDE CHEMICALLY APPLIED OR PLATED FINISHES		REQ'D	ITEM	PART NUMBER	DESCRIPTION	SYM.
DECIMALS .X ± .05 .XX ± .01 .XXX ± .005		E. BUDETTI				LIST OF MATERIAL
FRACTIONS 1/64 TOLS. ANGLES 0° - 30'		FINAL APPROVAL	DATE	THE TECHNICAL MATERIEL CORP. MAMARONECK, NEW YORK		
MATERIAL	SS STAIN #303	MECH. DES.	DATE	SHAFT, CAP DRIVE		
FINISH	S104 PASSIVATE	ELECT. DES.	DATE			
	S401-451	CHECKED	DATE			
		DRAWN	DATE			
NOTICE TO PERSONS RECEIVING THIS DRAWING THE TECHNICAL MATERIEL CORPORATION claims proprietary right in the material disclosed hereon. This drawing is issued in confidence for engineering information only and may not be reproduced or used to manufacture anything shown hereon without permission from THE TECHNICAL MATERIEL CORPORATION to the user. This drawing is loaned for mutual assistance and is subject to recall at any time.		SIZE	CODE IDENT. NO.	DWG NO.	ISSUE	
		A	82679	PM1344	Ø	
SCALE 1:1		SHEET		OF		

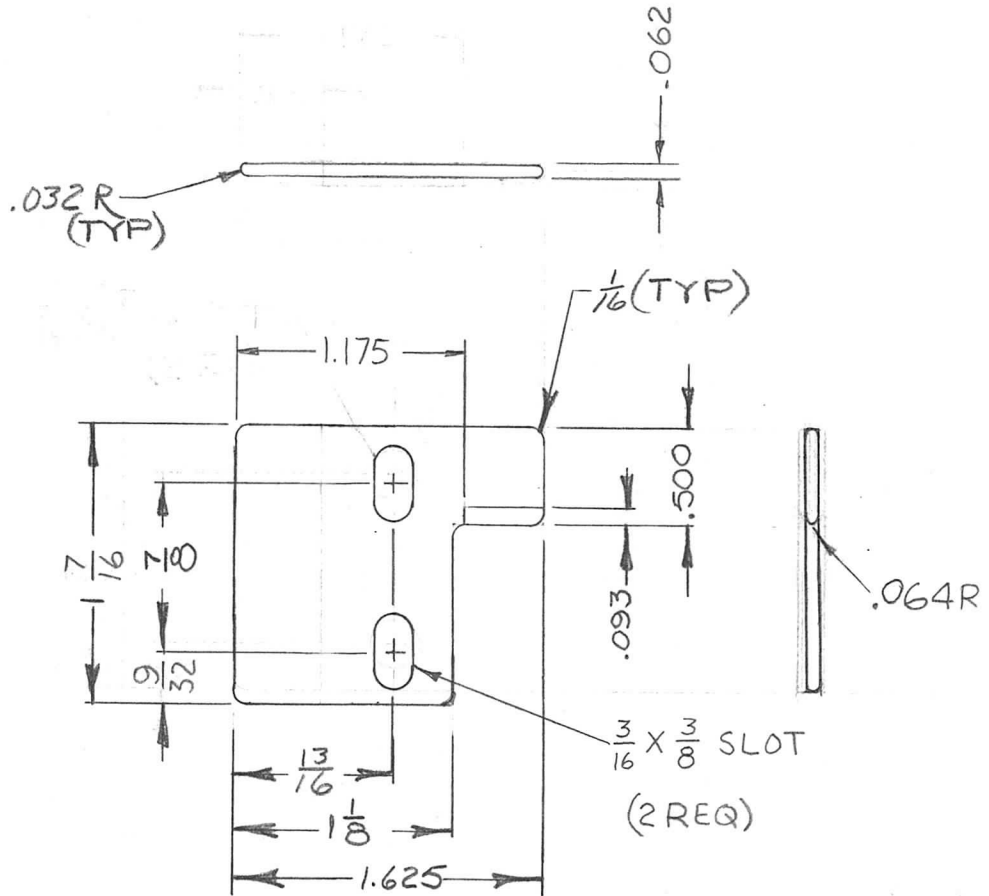
APPLICATION			REVISIONS						
QTY	MODEL USED ON	ASS'Y NO.	LTR	DESCRIPTION	DATE	E.M.N.NO	DRAFT	CHKD	APPD
1	GPT-40KEL		X	EXP RELEASE	10/30/67				
			XI	COMPLETELY REVISED	12-6-67	+			
			Ø	ORIG RELEASE FOR PROD	7/11/69				



NOTE:
BREAK ALL EDGES.

UNLESS OTHERWISE SPECIFIED DIMENSIONS ARE IN INCHES AND INCLUDE CHEMICALLY APPLIED OR PLATED FINISHES		REQ'D	ITEM	PART NUMBER	DESCRIPTION	SYM.	
DECIMALS: .X ± .05, .XX ± .01, .XXX ± .005 FRACTIONS: 1/64, ANGLES: 0° - 30'		F. BUDETTI LIST OF MATERIAL					
MATERIAL BRASS HALF HARD		FINAL APPROVAL: <i>[Signature]</i> 003 DATE: 7/11/69		THE TECHNICAL MATERIEL CORP. MAMARONECK, NEW YORK			
FINISH S245 SILVER PL. S423 SILVER KOTE S401-451		MECH. DES.: <i>[Signature]</i> DATE: 12/7/67		CONTACT, ELEC.			
		ELECT. DES.: DATE:					
		CHECKED: <i>[Signature]</i> DATE: 12-6-67					
		DRAWN: <i>[Signature]</i> DATE: 10-30-67					
NOTICE TO PERSONS RECEIVING THIS DRAWING THE TECHNICAL MATERIEL CORPORATION claims proprietary right in the material disclosed hereon. This drawing is issued in confidence for engineering information only and may not be reproduced or used to manufacture anything shown hereon without permission from THE TECHNICAL MATERIEL CORPORATION to the user. This drawing is loaned for mutual assistance and is subject to recall at any time.				SIZE: A	CODE IDENT. NO.: 82679	DWG NO.: PM1346	ISSUE: Ø
				SCALE:	SHEET OF		

APPLICATION			REVISIONS						
QTY	MODEL USED ON	ASS'Y NO.	LTR	DESCRIPTION	DATE	E.M.N.NO	DRAFT	CHKD	APPD
1	GPT-4DKEL		X	EXP RELEASE	10/27/67				
			XI	COMPLETELY REVISED	12-6-67	+			
			Ø	ORIG. RELEASE FOR PROD.	7/1/69		GE		



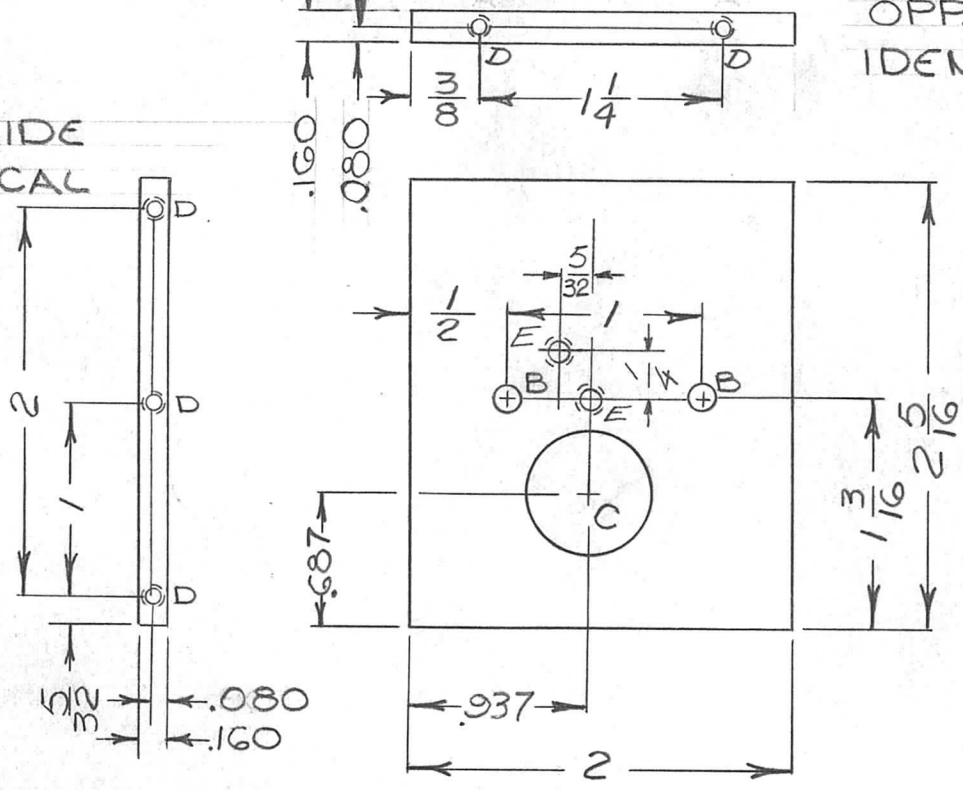
NOTE:
BREAK ALL EDGES.

UNLESS OTHERWISE SPECIFIED DIMENSIONS ARE IN INCHES AND INCLUDE CHEMICALLY APPLIED OR PLATED FINISHES		REQ'D	ITEM	PART NUMBER	DESCRIPTION	SYM.
DECIMALS: .X ± .05 FRACTIONS: 1/64 TOLS.: .XX ± .01 ANGLES: ° -30' .XXX ± .005		F. BUDETTI LIST OF MATERIAL THE TECHNICAL MATERIEL CORP. MAMARONECK, NEW YORK CONTACT, ELEC				
MATERIAL BRASS HALF HARD		FINAL APPROVAL	DATE	SIZE: A CODE IDENT. NO.: 82679 DWG NO.: PM1347 ISSUE: Ø		
FINISH S245 SIL. PL. S423 SIL KOTE		MECH. DES.	DATE	SCALE: 1:1 SHEET: OF		
S401-451		ELECT. DES.	DATE			
		CHECKED	DATE			
		DRAWN	DATE			
NOTICE TO PERSONS RECEIVING THIS DRAWING THE TECHNICAL MATERIEL CORPORATION claims proprietary right in the material disclosed hereon. This drawing is issued in confidence for engineering information only and may not be reproduced or used to manufacture anything shown hereon without permission from THE TECHNICAL MATERIEL CORPORATION to the user. This drawing is loaned for mutual assistance and is subject to recall at any time.						

APPLICATION			REVISIONS							
QTY	MODEL USED ON	ASS'Y NO.	LTR	DESCRIPTION	DATE	E.M.N.NO	DRAFT	CHKD	APPD	
1	HFRR-4		X	EXP. RELEASE	1-22-68					
			Ø	ORIG. RELEASE FOR PROD.	11-6-68	Ø	R.G.			
			A	ADD. 2 "E" HOLES	2-28-69	19349	GE			
			B	REV. & UPDATED	11/3/69	19629	LT.			

OPP. SIDE IDENTICAL

OPP. SIDE IDENTICAL



HOLE	DESCRIPTION	REQ'D
A	NO. 43 (.089) DRILL & TAP	2
B	7/64 DIA.	2
C	.627 ± .002 DIA	1
D	NO. 50 (.0700) DR. x 5/16 DP TAP #2-56 NC-2B x 3/16 DP.	10
E	NO. 43 (.089) DRILL & TAP 0440 NC 2B 1	2

UNLESS OTHERWISE SPECIFIED DIMENSIONS ARE IN INCHES AND INCLUDE CHEMICALLY APPLIED OR PLATED FINISHES

DECIMALS FRACTIONS
 .X ± .05 1/64
 .XX ± .01 TOLS. ANGLES
 .XXX ± .005 0°-30'

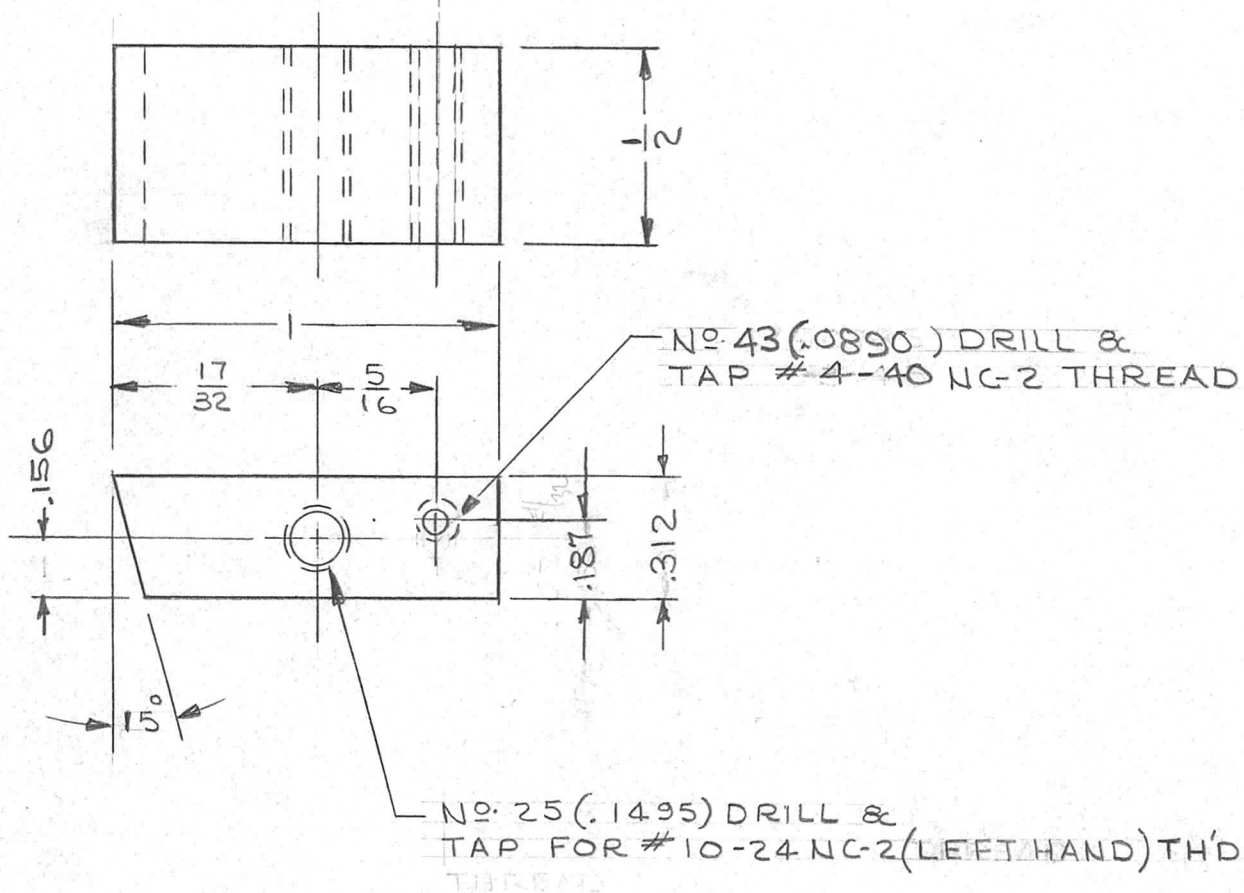
MATERIAL .160 THK
 ALUM. 2024-T3
 FINISH S404
 YEL. IRIDITE
 S401-451

REQ'D	ITEM	PART NUMBER	DESCRIPTION	SYM.
	HOGAN LIST OF MATERIALS K3252-003-27X2			
	THE TECHNICAL MATERIEL CORP. MAMARONECK, NEW YORK			
	BRACE, REAR			
FINAL APPROVAL	DATE			
M. ZETENA	11/6/68			
MECH. DES.	DATE			
ELECT. DES.	DATE			
CHECKED	DATE			
SG	1/23/68			
DRAWN	DATE			
J. Hochman	1-23-68			

NOTICE TO PERSONS RECEIVING THIS DRAWING
 THE TECHNICAL MATERIEL CORPORATION claims proprietary right in the material disclosed hereon. This drawing is issued in confidence for engineering information only and may not be reproduced or used to manufacture anything shown hereon without permission from THE TECHNICAL MATERIEL CORPORATION to the user. This drawing is loaned for mutual assistance and is subject to recall at any time.

SIZE	CODE IDENT. NO.	DWG NO.	ISSUE
A	82679	PM1353	B
SCALE 1:1		SHEET	OF

QTY	MODEL USED ON	ASS'Y NO.	LTR	DESCRIPTION	DATE	E.M.N.NO	DRAFT	CHKD	APPD
1	HFRR-4		X	EXP. RELEASE	11-17-67		JL		
			X1	4-40 TAPPED HOLE WAS 3-48 AND RELOCATED	1/30/68	X1	JL		
			Ø	ORIG. RELEASE FOR PROD.	11-6-68	Ø	R.G.		



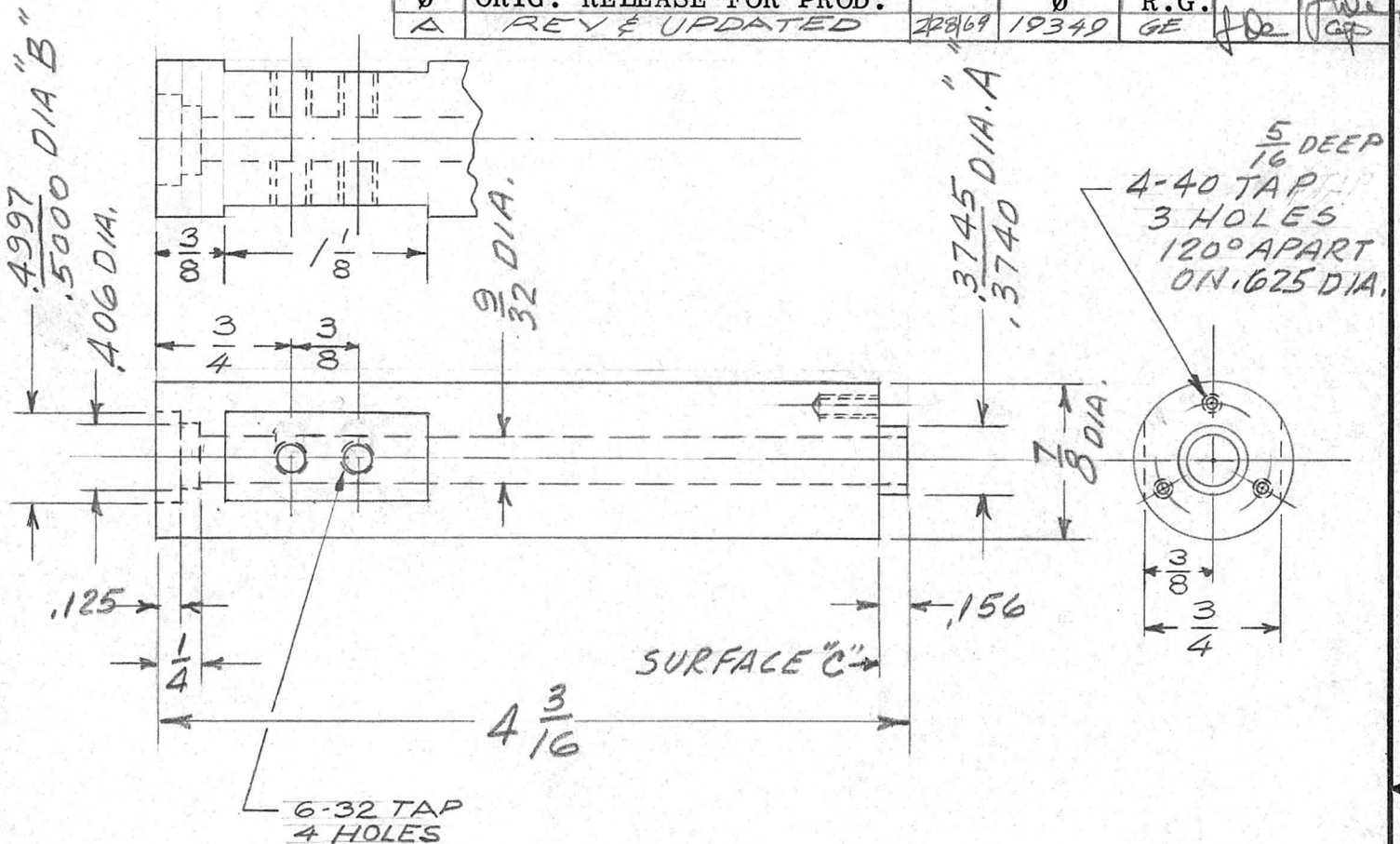
UNLESS OTHERWISE SPECIFIED DIMENSIONS ARE IN INCHES AND INCLUDE CHEMICALLY APPLIED OR PLATED FINISHES		REQ'D	ITEM	PART NUMBER	DESCRIPTION	SYM.
DECIMALS: .X ± .05, .XX ± .01, .XXX ± .005; FRACTIONS: 1/64, ANGLES: 0°-30'		HOGAN (ZETENA) LIST OF MATERIAL SK 3252-003-50				
MATERIAL STAINLESS STEEL TYPE 303		FINAL APPROVAL	DATE	THE TECHNICAL MATERIEL CORP. MAMARONECK, NEW YORK		
FINISH S104 PASSIVATE		MECH. DES.	DATE	BLOCK, LOCKING-TUNER		
S401-451		ELECT. DES.	DATE			
		CHECKED	DATE			
		DRAWN	DATE			

NOTICE TO PERSONS RECEIVING THIS DRAWING: THE TECHNICAL MATERIEL CORPORATION claims proprietary right in the material disclosed hereon. This drawing is issued in confidence for engineering information only and may not be reproduced or used to manufacture anything shown hereon without permission from THE TECHNICAL MATERIEL CORPORATION to the user. This drawing is loaned for mutual assistance and is subject to recall at any time.				SIZE	CODE IDENT. NO.	DWG NO.	ISSUE
				A	82679	PM1355	Ø
				SCALE	SHEET		OF

APPLICATION

REVISIONS

QTY	MODEL USED ON	ASS'Y NO.	LTR	DESCRIPTION	DATE	E.M.N.NO	DRAFT	CHKD	APPD
1	HFRR-4		X	EXP. RELEASE	11.17.67		D.A.C.		
			Ø	ORIG. RELEASE FOR PROD.		Ø	R.G.		
			A	REV & UPDATED	2/28/69	19349	GE		



NOTES

- 1.- DIA. "A" & B MUST BE CONCENTRIC WITHIN .0015 T. I. R.
- 2- DIA "A" MUST BE SQUARE WITH SURFACE "C" WITHIN .0005 FOR EVERY INCH

UNLESS OTHERWISE SPECIFIED DIMENSIONS ARE IN INCHES AND INCLUDE CHEMICALLY APPLIED OR PLATED FINISHES		REQ'D	ITEM	PART NUMBER	DESCRIPTION	SYM.
DECIMALS: .X ± .05, .XX ± .01, .XXX ± .005 FRACTIONS: 1/64, ANGLES: 0°-30° TOLS.				HOGAN(ZETENA)	LIST OF MATERIAL SK3252-003-34	
MATERIAL ALUMINUM ROD 2024-T3		FINAL APPROVAL	DATE	THE TECHNICAL MATERIEL CORP. MAMARONECK, NEW YORK		
FINISH S404 YEL. IRIDITE		MECH. DES. M. ZETENA	DATE	SLEEVE		
S401-451		ELECT. DES.	DATE			
		CHECKED SG	DATE 11/20/68			
		DRAWN D.A.C.	DATE 11.17.67			

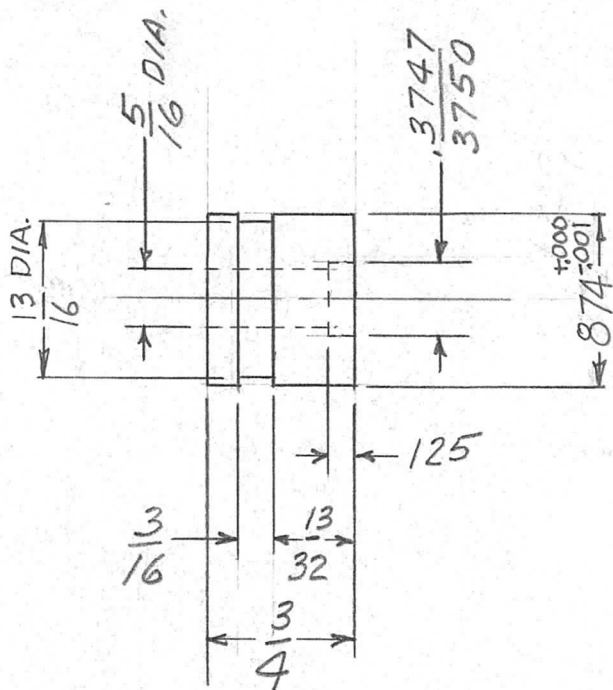
NOTICE TO PERSONS RECEIVING THIS DRAWING
 THE TECHNICAL MATERIEL CORPORATION claims proprietary right in the material disclosed hereon. This drawing is issued in confidence for engineering information only and may not be reproduced or used to manufacture anything shown hereon without permission from THE TECHNICAL MATERIEL CORPORATION to the user. This drawing is loaned for mutual assistance and is subject to recall at any time.

SIZE	CODE IDENT. NO.	DWG NO.	ISSUE
A	82679	PM1356	A
SCALE 1:1	SHEET OF		

APPLICATION

REVISIONS

QTY	MODEL USED ON	ASS'Y NO.	LTR	DESCRIPTION	DATE	E.M.N.NO	DRAFT	CHKD	APPD
2	HFRR-4		X	EXP. RELEASE	11.17.67		D.A.C.		
			Ø	ORIG. RELEASE FOR PROD.	11-6-68	Ø	R.G.		Jde



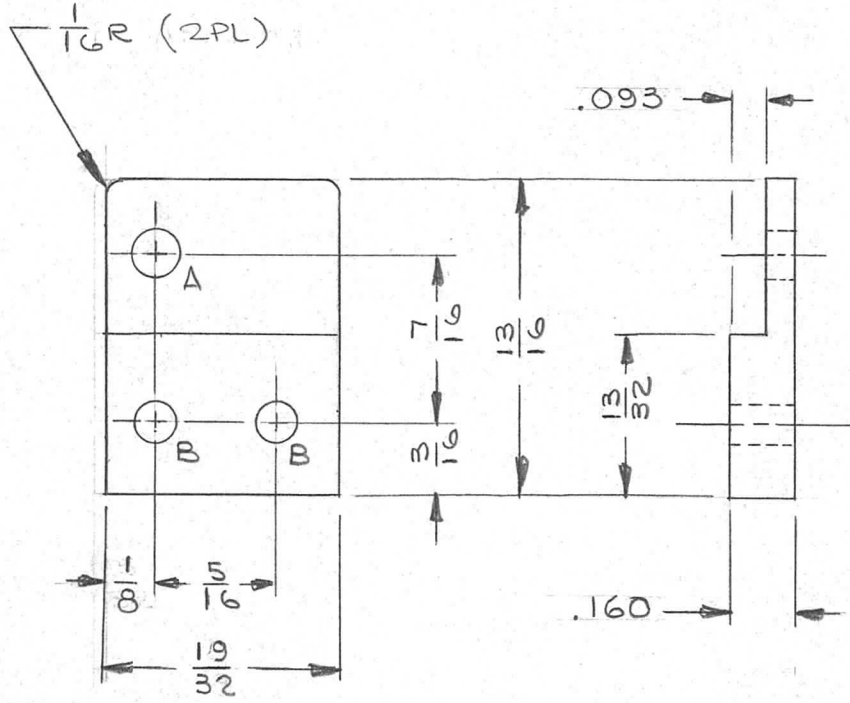
UNLESS OTHERWISE SPECIFIED DIMENSIONS ARE IN INCHES AND INCLUDE CHEMICALLY APPLIED OR PLATED FINISHES	REQ'D	ITEM	PART NUMBER	DESCRIPTION	SYM.
DECIMALS .X ± .05 .XX ± .01 .XXX ± .005					
FRACTIONS 1/64 TOLS. ANGLES 0° - 30°					
MATERIAL ALUMINUM ROD 2024-T3				LIST OF MATERIAL	SK 3252-003-44
FINISH S404 YEL IRIDITE				THE TECHNICAL MATERIEL CORP.	
S401-451				MAMARONECK, NEW YORK	
				HOLDER, BEARING	

NOTICE TO PERSONS RECEIVING THIS DRAWING	SIZE	CODE IDENT. NO.	DWG NO.	ISSUE
THE TECHNICAL MATERIEL CORPORATION claims proprietary right in the material disclosed hereon. This drawing is issued in confidence for engineering information only and may not be reproduced or used to manufacture anything shown hereon without permission from THE TECHNICAL MATERIEL CORPORATION to the user. This drawing is loaned for mutual assistance and is subject to recall at any time.	A	82679	PM 1357	Ø
	SCALE 1:1		SHEET	OF

APPLICATION

REVISIONS

QTY	MODEL USED ON	ASS'Y NO.	LTR	DESCRIPTION	DATE	E.M.N.NO	DRAFT	CHKD	APPD
1	HFRR-4		X	EXP. RELEASE	11/17/67		JL		
			Ø	ORIG. RELEASE FOR PROD.	11-6-68	Ø	R.G.		



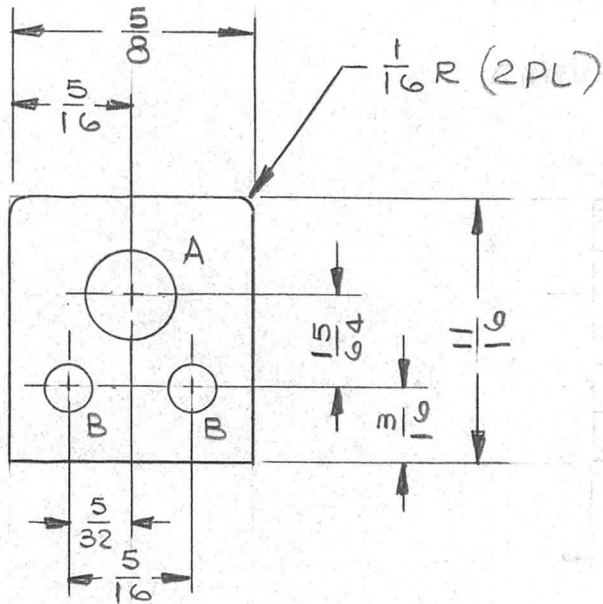
HOLE LEGEND		
HOLE	DESCRIPTION	REQ
A	.171 DIA	1
B	.125 DIA	2

UNLESS OTHERWISE SPECIFIED DIMENSIONS ARE IN INCHES AND INCLUDE CHEMICALLY APPLIED OR PLATED FINISHES DECIMALS FRACTIONS .X ± .05 TOLS. 1/64 .XX ± .01 ANGLES 0° - 30' .XXX ± .005	REQ'D	ITEM	PART NUMBER	DESCRIPTION	SYM.	
			HOGAN (ZETENA)	LIST OF MATERIAL SK 3252-003-34		
	FINAL APPROVAL	DATE	THE TECHNICAL MATERIEL CORP.			
	MECH. DES. M. ZETENA	DATE	MAMARONECK, NEW YORK			
	ELECT. DES.	DATE	SHAFT SUPPORT-REAR (TUNER)			
MATERIAL .160 THICK ALUMINUM 2024-T3	CHECKED SG	DATE 11/20/68				
FINISH S404 YEL IRIDITE	DRAWN JL	DATE 11/17/67				
S401-451			SIZE A	CODE IDENT. NO. 82679	DWG NO. PM1358	ISSUE 0

NOTICE TO PERSONS RECEIVING THIS DRAWING
 THE TECHNICAL MATERIEL CORPORATION claims proprietary right in the material disclosed hereon. This drawing is issued in confidence for engineering information only and may not be reproduced or used to manufacture anything shown hereon without permission from THE TECHNICAL MATERIEL CORPORATION to the user. This drawing is loaned for mutual assistance and is subject to recall at any time.

SCALE	SHEET	OF
-------	-------	----

QTY	MODEL USED ON	ASS'Y NO.	LTR	DESCRIPTION	DATE	E.M.N.NO	DRAFT	CHKD	APPD
1	HFRR-4		X	EXP. RELEASE	11-17-67		JL		
			Ø	ORIG. RELEASE FOR PROD.	11-6-68	Ø	R.G.		JL

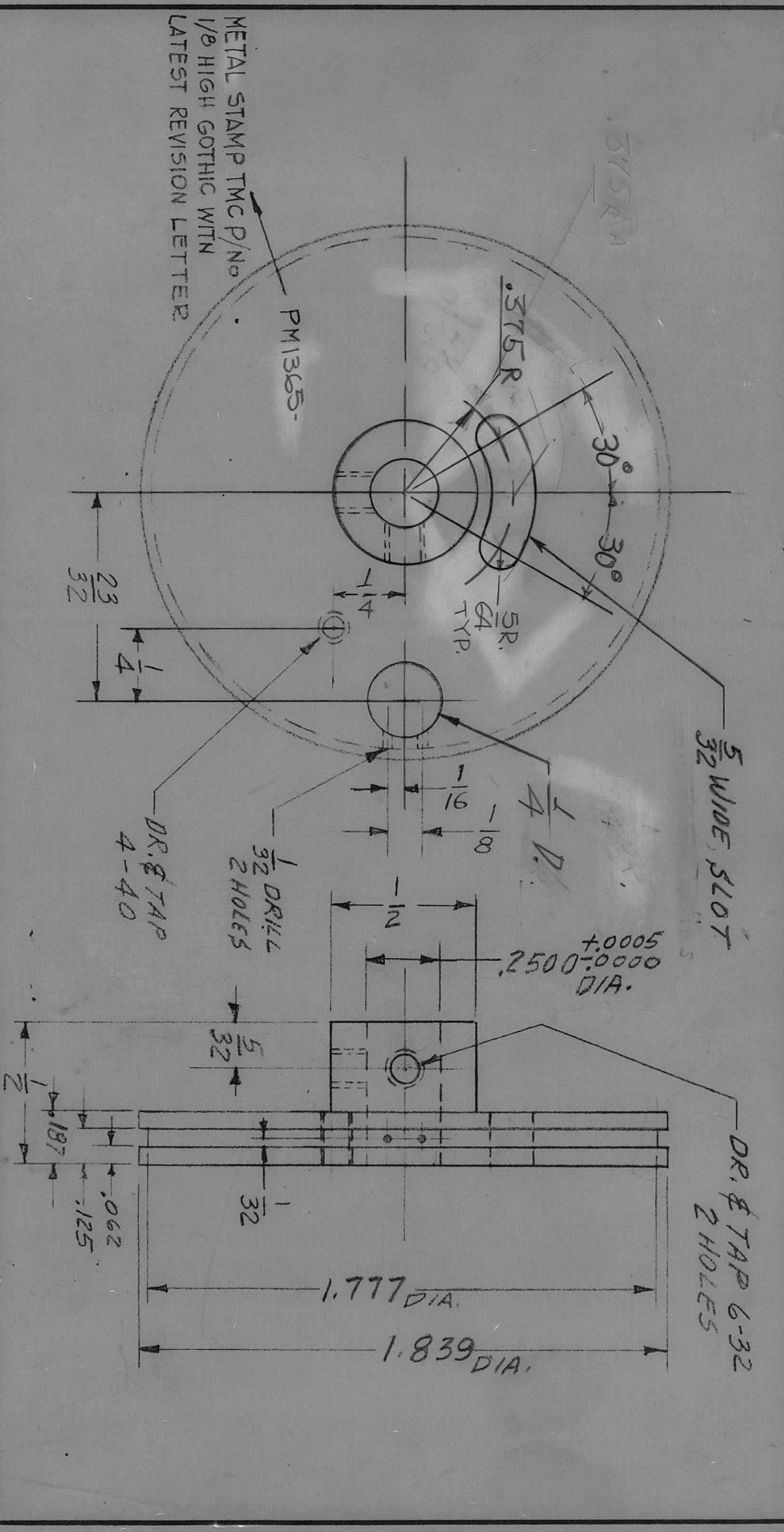


HOLE LEGEND		
HOLE	DESCRIPTION	REQ
A	LETTER "B" (.2380) DR	1
B	.125 DIA.	2

UNLESS OTHERWISE SPECIFIED DIMENSIONS ARE IN INCHES AND INCLUDE CHEMICALLY APPLIED OR PLATED FINISHES		REQ'D	ITEM	PART NUMBER	DESCRIPTION	SYM.
DECIMALS: .X ± .05, .XX ± .01, .XXX ± .005 FRACTIONS: 1/64, ANGLES: 0°-30'		HOGAN (ZETENA) LIST OF MATERIAL SK3252-003-57 THE TECHNICAL MATERIEL CORP. MAMARONECK, NEW YORK SUPPORT, SHAFT-FRONT (TUNER)				
MATERIAL: .125 THICK ALUMINUM 2024-T3	MECH. DES. M. ZETENA	DATE	11/6/68			
FINISH S404 YEL IRIDITE	ELECT. DES.	DATE	11/19/68			
S401-451	CHECKED SG	DATE	11/17/67			
	DRAWN JL	DATE	11/17/67			

NOTICE TO PERSONS RECEIVING THIS DRAWING THE TECHNICAL MATERIEL CORPORATION claims proprietary right in the material disclosed hereon. This drawing is issued in confidence for engineering information only and may not be reproduced or used to manufacture anything shown hereon without permission from THE TECHNICAL MATERIEL CORPORATION to the user. This drawing is loaned for mutual assistance and is subject to recall at any time.				SIZE A	CODE IDENT. NO. 82679	DWG NO. PM1359	ISSUE Ø
SCALE —		SHEET OF					

REQ. PER UNIT	1	MODEL	VLR-1	USED ON ASSY. NO.	A4279-1	DATE	1-5-68	PM1365	Ø
---------------	---	-------	-------	-------------------	---------	------	--------	--------	---

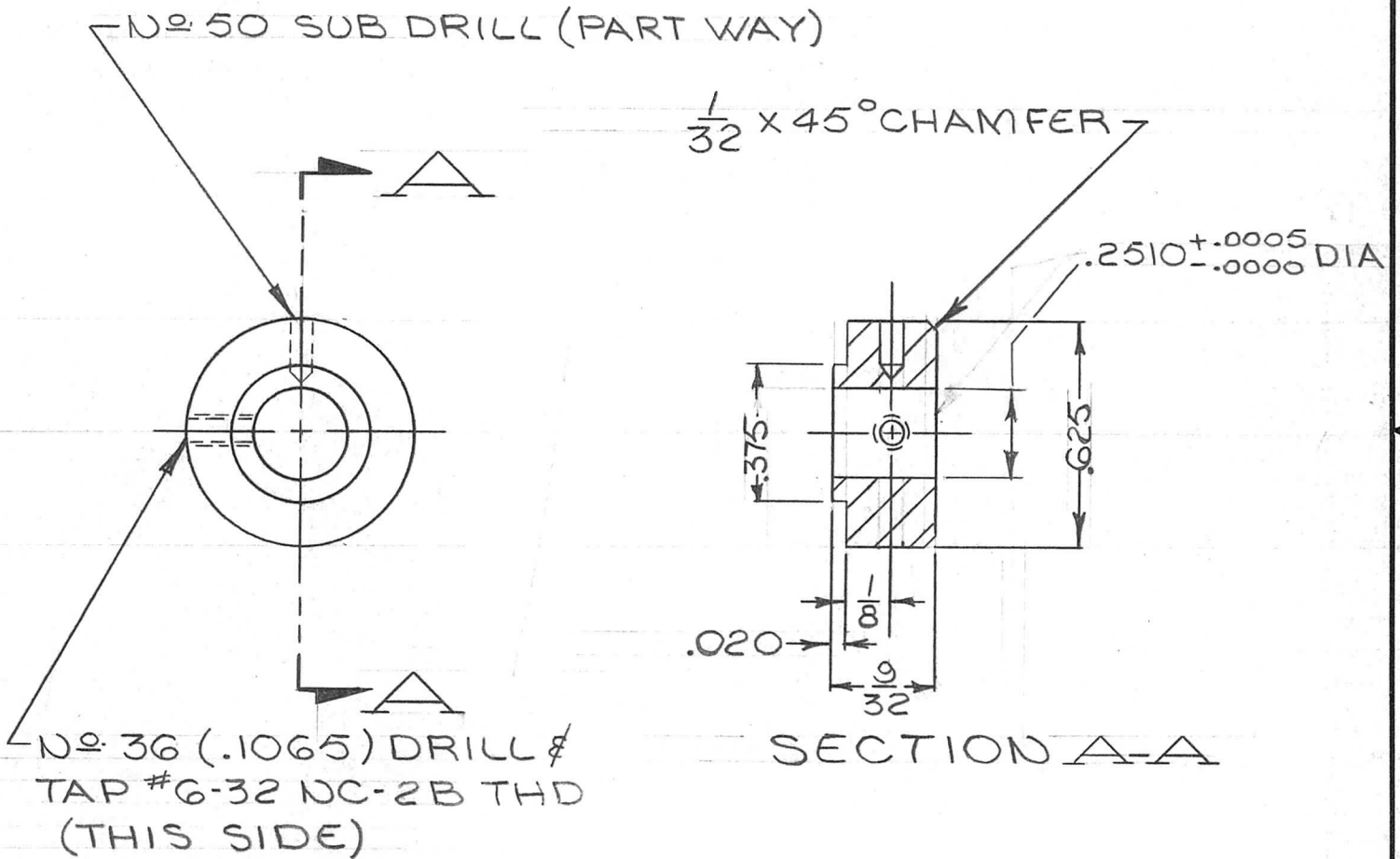


SYM	DESCRIPTION	DATE	CH. NO.	DRAFTS	CHECKER	ENG. APP.	REQ. ITEM	PART NO.	MATERIAL	HEAT TREAT. SPEC.	DRAWN	CHECKED	FINAL APPROVAL	SYMBOL
Ø	ORIGINAL RELEASE FOR PRODUCTION	1-9-68	-		AM	AM			ALUMINUM		HK	AM	SPM	Ø
X	EXPER. RELEASE	1-8-68	44											
UNLESS OTHERWISE SPECIFIED DIMENSIONS ARE IN INCHES AND INCLUDE CHEMICALLY APPLIED OR PLATED FINISHES							SCALE	MATERIAL		MARTINENGO DESCRIPTION				SYMBOL
							2:1	ALUMINUM		THE TECHNICAL MATERIEL CORP. MAMARONECK, NEW YORK PULLEY, MAIN (DRUM DIAL)				
							CODE	TYPE & TEMPER		FINISH & SPEC. NO.				
							A	2024-T3		5404 YEL. IRIDITE				
								HEAT TREAT. SPEC.		ELEC. DES. APP. / MECH. DES. APP.				
										AM				
										PM1365				

APPLICATION			REVISIONS							
QTY	MODEL USED ON	ASS'Y NO.	LTR	DESCRIPTION	DATE	E.M.N.NO	DRAFT	CHKD	APPD	
1	HFSR-4		X	EXP. RELEASE	4-10-68					
			X ₁	OBSOLETE NOTE ADDED	5-7-68					
			Ø	ORIG. RELEASE FOR PROD.	5.8.68	Ø	R.B.			

OBSOLETE

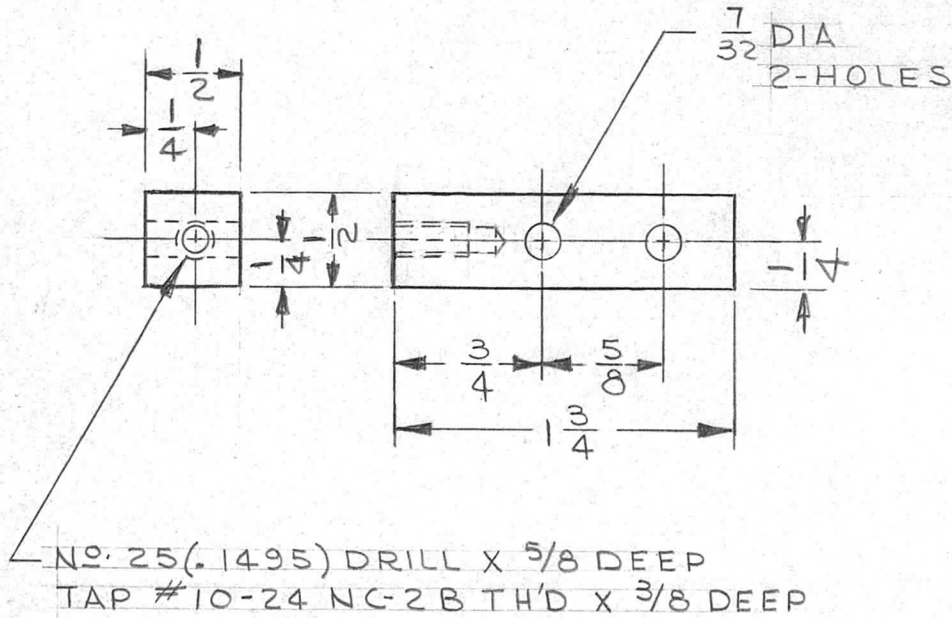
ADDED TO DI 103



UNLESS OTHERWISE SPECIFIED DIMENSIONS ARE IN INCHES AND INCLUDE CHEMICALLY APPLIED OR PLATED FINISHES		REQ'D	ITEM	PART NUMBER	DESCRIPTION	SYM.
DECIMALS FRACTIONS .X ± .05 .XX ± .01 .XXX ± .005		HOGAN		LIST OF MATERIAL SK3252-004-26 X ₁		
TOLS. 1/64 ANGLES 0° -30'		FINAL APPROVAL	DATE	THE TECHNICAL MATERIEL CORP. MAMARONECK, NEW YORK HUB, DIAL		
MATERIAL H.H. BRASS	MECH. DES.	DATE				
FINISH S135 NICKEL PLATE	ELECT. DES.	DATE				
S401-451	CHECKED	DATE				
		DRAWN	DATE			

NOTICE TO PERSONS RECEIVING THIS DRAWING THE TECHNICAL MATERIEL CORPORATION claims proprietary right in the material disclosed hereon. This drawing is issued in confidence for engineering information only and may not be reproduced or used to manufacture anything shown hereon without permission from THE TECHNICAL MATERIEL CORPORATION to the user. This drawing is loaned for mutual assistance and is subject to recall at any time.				SIZE	CODE IDENT. NO.	DWG NO.	ISSUE
				A	82679	PM 1366	Ø
				SCALE 2:1	SHEET		OF

APPLICATION			REVISIONS						
QTY	MODEL USED ON	ASS'Y NO.	LTR	DESCRIPTION	DATE	E.M.N.NO	DRAFT	CHKD	APPD
4	AWTA-1	A4746	X1	DWG WAS WEDGE SUPPORT SCHROUD	6/13/68		JL		<i>[Signature]</i>
			Ø	ORIG. RELEASE FOR PROD.	11/4/68	Ø	R.G.		<i>[Signature]</i>

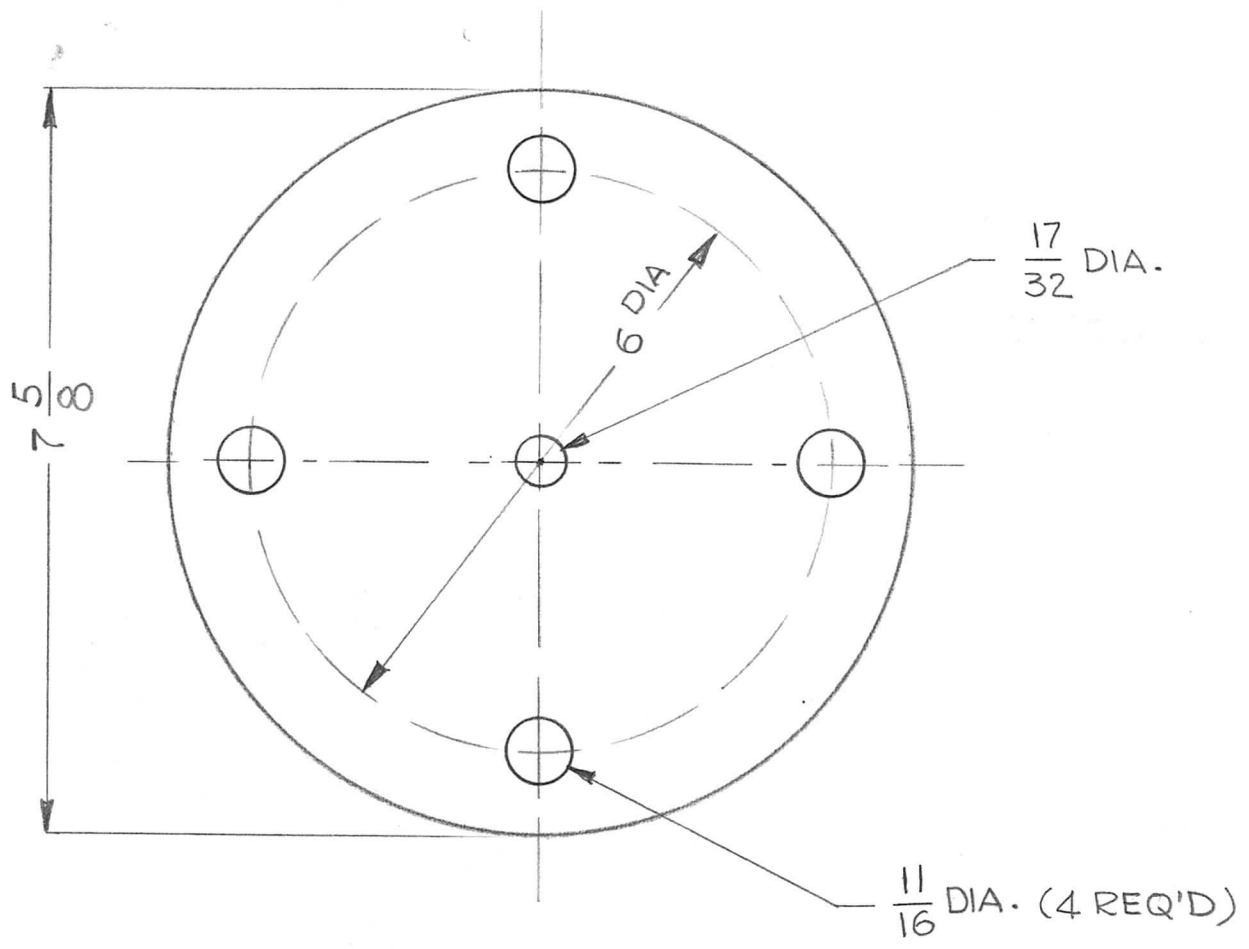


FINISH NOTE:
 ZINC PLATE .2 TO 1.0 MIL
 CROMATE DIP .15 MIL MINIMUM
 AS PER QQ-2-325

UNLESS OTHERWISE SPECIFIED DIMENSIONS ARE IN INCHES AND INCLUDE CHEMICALLY APPLIED OR PLATED FINISHES		REQ'D	ITEM	PART NUMBER	DESCRIPTION	SYM.
DECIMALS .X ± .05 .XX ± .01 .XXX ± .005		FRACTIONS 1/64 ANGLES 0° - 30°		LIST OF MATERIAL SK 3291-000-13		
MATERIAL CRS 1/2 X 1/2		FINISH SEE NOTE		THE TECHNICAL MATERIEL CORP. MAMARONECK, NEW YORK		
MECH. DES. M ZETENA		ELECT. DES.		MTG BLOCK-INS. PLATE		
CHECKED <i>[Signature]</i>		DRAWN J. LESHINSKI		DATE 10/31/68		
DATE 6/12/68		DATE		DATE		

NOTICE TO PERSONS RECEIVING THIS DRAWING THE TECHNICAL MATERIEL CORPORATION claims proprietary right in the material disclosed hereon. This drawing is issued in confidence for engineering information only and may not be reproduced or used to manufacture anything shown hereon without permission from THE TECHNICAL MATERIEL CORPORATION to the user. This drawing is loaned for mutual assistance and is subject to recall at any time.				SIZE A	CODE IDENT. NO. 82679	DWG NO. SIPM1374	ISSUE Ø
SCALE 1/1		SHEET		OF			

APPLICATION			REVISIONS						
QTY	MODEL USED ON	ASS'Y NO.	LTR	DESCRIPTION	DATE	E.M.N.NO	DRAFT	CHKD	APPD
1	AWTA-1	A4746	X	EXP. RELEASE	8-23-68		G.D.L.		<i>[Signature]</i>
			Ø	ORIG. RELEASE FOR PROD.	11/4/68	Ø	R.G.		<i>[Signature]</i>



UNLESS OTHERWISE SPECIFIED DIMENSIONS ARE IN INCHES AND INCLUDE CHEMICALLY APPLIED OR PLATED FINISHES

DECIMALS	FRACTIONS
.X ± .05	1/64
.XX ± .01	TOLS. ANGLES
.XXX ± .005	0° -30'

MATERIAL 1/8 THK. 1/4 HARD NAVAL BRONZE

FINISH —

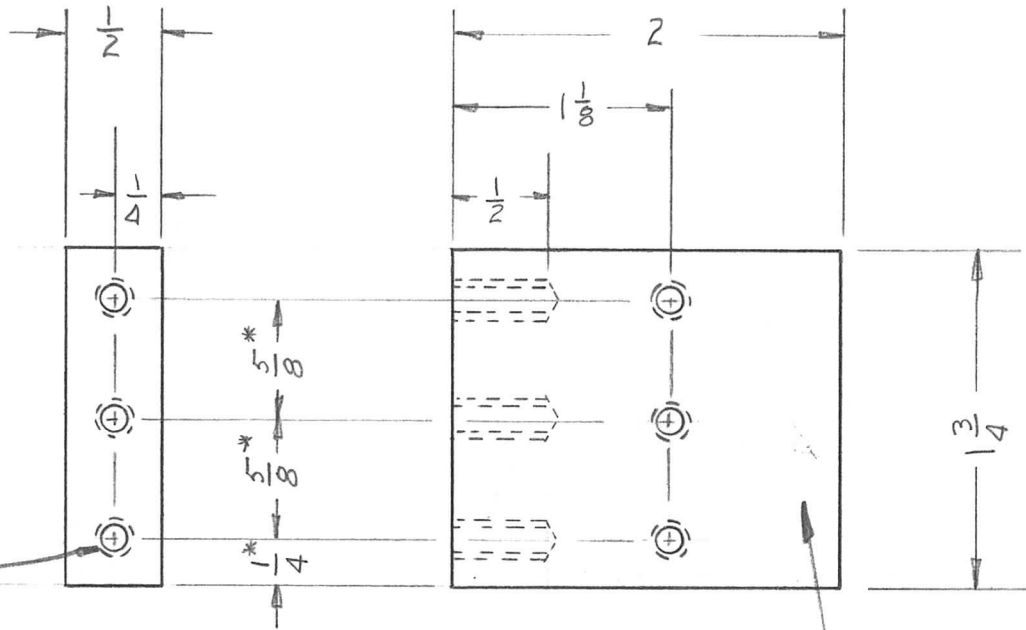
REQ'D	ITEM	PART NUMBER	DESCRIPTION	SYM.
			LIST OF MATERIAL E3291-000-51	
			THE TECHNICAL MATERIEL CORP. MAMARONECK, NEW YORK	
			PLATE, CONTACT	

MECH. DES. M. ZETENA	DATE
ELECT. DES.	DATE
CHECKED <i>[Signature]</i>	DATE 10/31/68
DRAWN G.D.L.	DATE

NOTICE TO PERSONS RECEIVING THIS DRAWING
 THE TECHNICAL MATERIEL CORPORATION claims proprietary right in the material disclosed hereon. This drawing is issued in confidence for engineering information only and may not be reproduced or used to manufacture anything shown hereon without permission from THE TECHNICAL MATERIEL CORPORATION to the user. This drawing is loaned for mutual assistance and is subject to recall at any time.

SIZE A	CODE IDENT. NO. 82679	DWG NO. PM1375	ISSUE Ø
SCALE		SHEET OF	

APPLICATION			REVISIONS						
QTY	MODEL USED ON	ASS'Y NO.	LTR	DESCRIPTION	DATE	E.M.N.NO	DRAFT	CHKD	APPD
6	HFTA-1KJ	RAK137	Ø	ORIG RELEASE FOR PROD	4/8/71		CV		P. E. B.



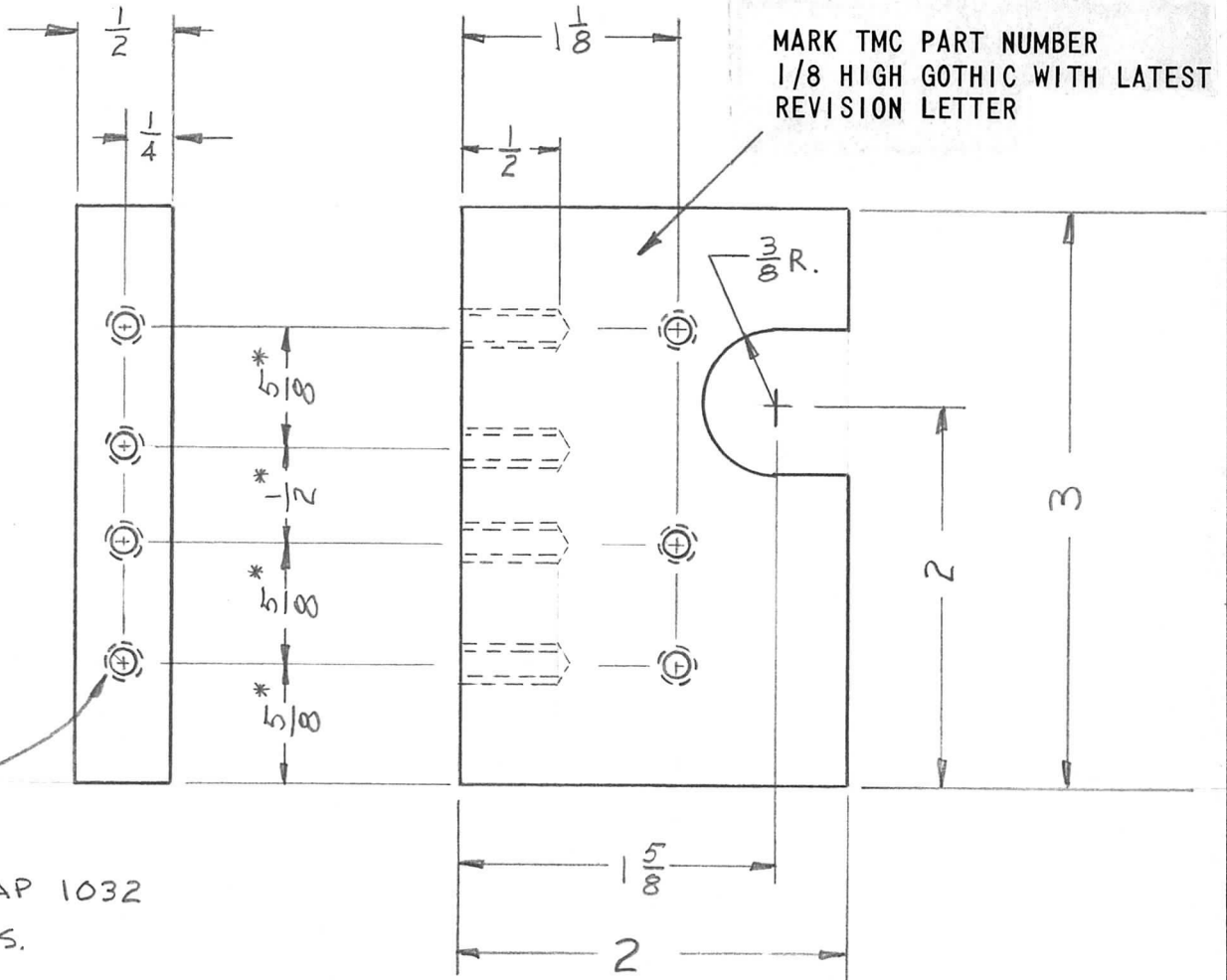
DRILL & TAP 1032
6 PLACES.

* TOLERANCE NON-ACCUMULATIVE

MARK TMC PART NUMBER
1/8 HIGH GOTHIC WITH LATEST
REVISION LETTER

UNLESS OTHERWISE SPECIFIED DIMENSIONS ARE IN INCHES AND INCLUDE CHEMICALLY APPLIED OR PLATED FINISHES		REQ'D	ITEM	PART NUMBER	DESCRIPTION	SYM.		
DECIMALS .X ± .05 .XX ± .01 .XXX ± .005 FRACTIONS 1/64 TOLS. ANGLES 0° - 30'		BUDETTI LIST OF MATERIAL						
MATERIAL ALUM. 2024		MECH. DES. <i>[Signature]</i>		DATE 8 APR 71		THE TECHNICAL MATERIEL CORP. MAMARONECK, NEW YORK BLOCK, SLIDE MTG.		
FINISH S404 YEL IRID		ELECT. DES.		DATE				
		CHECKED		DATE				
		DRAWN <i>[Signature]</i>		DATE 21 Apr 71				
NOTICE TO PERSONS RECEIVING THIS DRAWING THE TECHNICAL MATERIEL CORPORATION claims proprietary right in the material disclosed hereon. This drawing is issued in confidence for engineering information only and may not be reproduced or used to manufacture anything shown hereon without permission from THE TECHNICAL MATERIEL CORPORATION to the user. This drawing is loaned for mutual assistance and is subject to recall at any time.					SIZE A	CODE IDENT. NO. 82679	DWG NO. PM1376	ISSUE Ø
					SCALE	SHEET OF		

APPLICATION			REVISIONS						
QTY	MODEL USED ON	ASS'Y NO.	LTR	DESCRIPTION	DATE	E.M.N.NO	DRAFT	CHKD	APPD
4	HFTA-1KJ	RAK137	Ø	ORIG RELEASE FOR PROD	4/8/71		CO		P.E.B.



* TOLERANCE NON-ACCUMULATIVE.

UNLESS OTHERWISE SPECIFIED DIMENSIONS ARE IN INCHES AND INCLUDE CHEMICALLY APPLIED OR PLATED FINISHES

DECIMALS FRACTIONS
 .X ± .05 1/64
 .XX ± .01 TOLS. ANGLES
 .XXX ± .005 0°-30'

MATERIAL ALUM.
2024

FINISH
SA04 YEL IRID.

REQ'D	ITEM	PART NUMBER	DESCRIPTION	SYM.
		BUDETTI	LIST OF MATERIAL	
	FINAL APPROVAL	<i>[Signature]</i>	DATE	8 APR 71
	MECH. DES.	<i>[Signature]</i>	DATE	8 APR 71
	ELECT. DES.		DATE	
	CHECKED		DATE	
	DRAWN	<i>[Signature]</i>	DATE	7 JAN 71

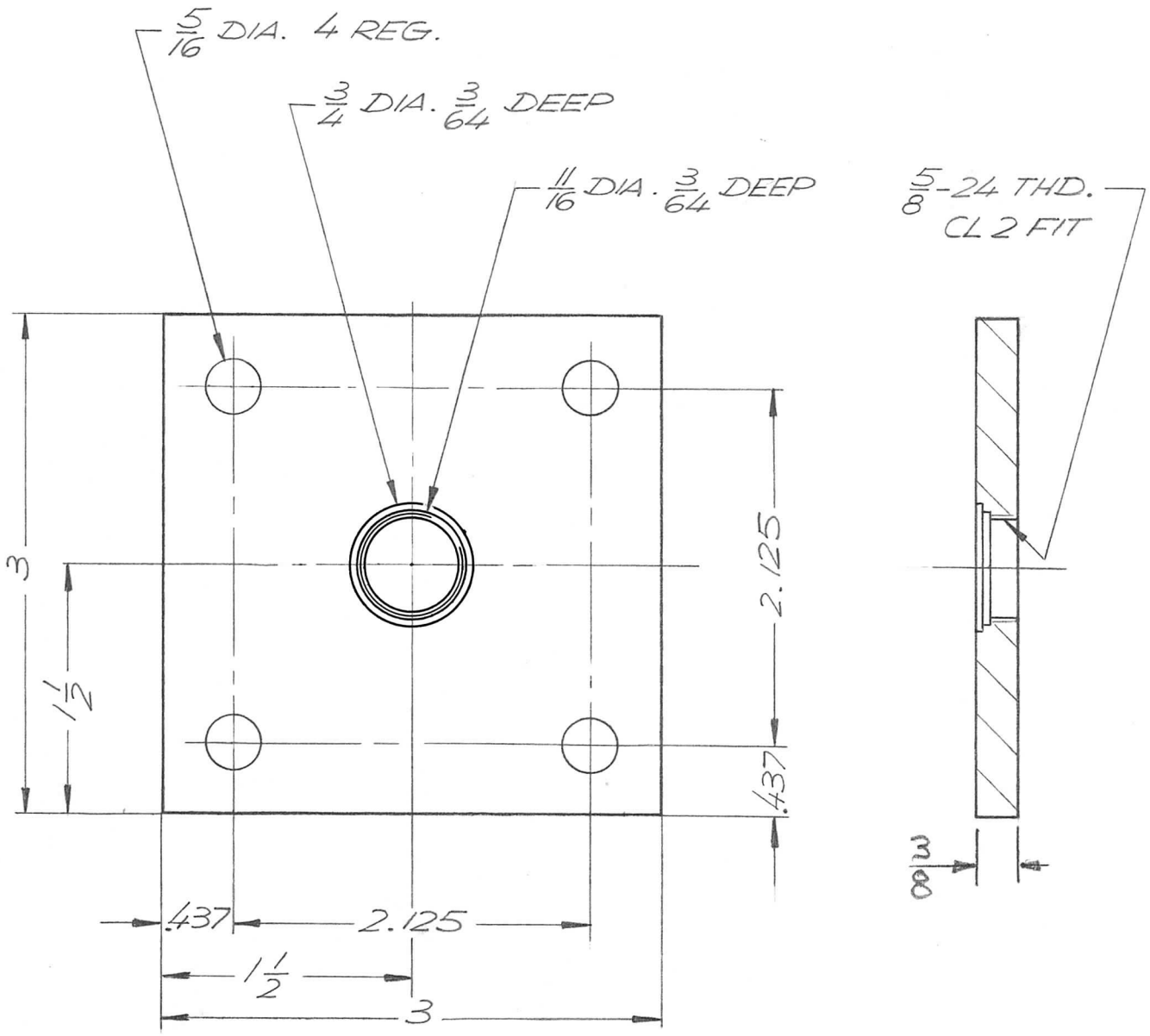
THE TECHNICAL MATERIEL CORP.
MAMARONECK, NEW YORK

BLOCK, SLIDE MTG.

NOTICE TO PERSONS RECEIVING THIS DRAWING
 THE TECHNICAL MATERIEL CORPORATION claims proprietary right in the material disclosed hereon. This drawing is issued in confidence for engineering information only and may not be reproduced or used to manufacture anything shown hereon without permission from THE TECHNICAL MATERIEL CORPORATION to the user. This drawing is loaned for mutual assistance and is subject to recall at any time.

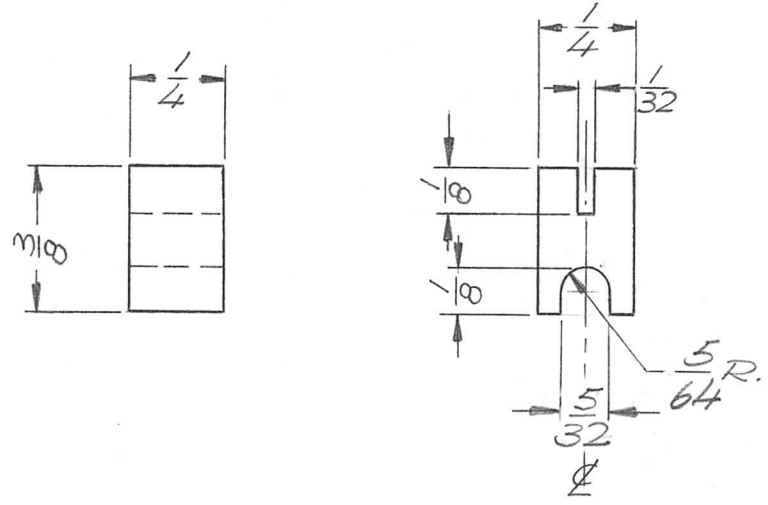
SIZE A	CODE IDENT. NO. 82679	DWG NO. PM1377	ISSUE Ø
SCALE		SHEET	OF

APPLICATION			REVISIONS							
QTY	MODEL USED ON	ASS'Y NO.	LTR	DESCRIPTION	DATE	E.M.N.NO	DRAFT	CHKD	APPD	
	AX 701		X	EXPERIMENTAL RELEASE	11.5.68			K. H.	<i>[Signature]</i>	
			①	ORIG. RELEASE	12-3-68			JDE	<i>[Signature]</i>	



UNLESS OTHERWISE SPECIFIED DIMENSIONS ARE IN INCHES AND INCLUDE CHEMICALLY APPLIED OR PLATED FINISHES		REQ'D	ITEM	PART NUMBER	DESCRIPTION	SYM.
DECIMALS: .X ± .05, .XX ± .01, .XXX ± .005 FRACTIONS: 1/64, ANGLES: 0° - 30° TOLS.		LIST OF MATERIAL THE TECHNICAL MATERIEL CORP. MAMARONECK, NEW YORK PLATE, ADAPTOR, MTG, ('CONNECTOR')				
MATERIAL ALUMINUM 2024-T3	MECH. DES.				DATE 11-1-68	
FINISH S404 YELLOW IRIDITE	ELECT. DES.				DATE 11-5-68	
	CHECKED	<i>[Signature]</i>			DATE 11-5-68	
	DRAWN	<i>[Signature]</i>			DATE 11.5.68	
NOTICE TO PERSONS RECEIVING THIS DRAWING THE TECHNICAL MATERIEL CORPORATION claims proprietary right in the material disclosed hereon. This drawing is issued in confidence for engineering information only and may not be reproduced or used to manufacture anything shown hereon without permission from THE TECHNICAL MATERIEL CORPORATION to the user. This drawing is loaned for mutual assistance and is subject to recall at any time.		SIZE	CODE IDENT. NO.	DWG NO.	ISSUE	
		A	82679	PM 1378	①	
		SCALE	1 : 1	SHEET	OF	

APPLICATION			REVISIONS							
QTY	MODEL USED ON	ASS'Y NO.	LTR	DESCRIPTION	DATE	E.M.N.NO	DRAFT	CHKD	APPD	
	BCT 10 KA	AX700-	X	EXP. RELEASE	11/20/68		K.H.			
			Ø	ORIG. RELEASE FOR PROD	11-22-68	Ø	R.G.			

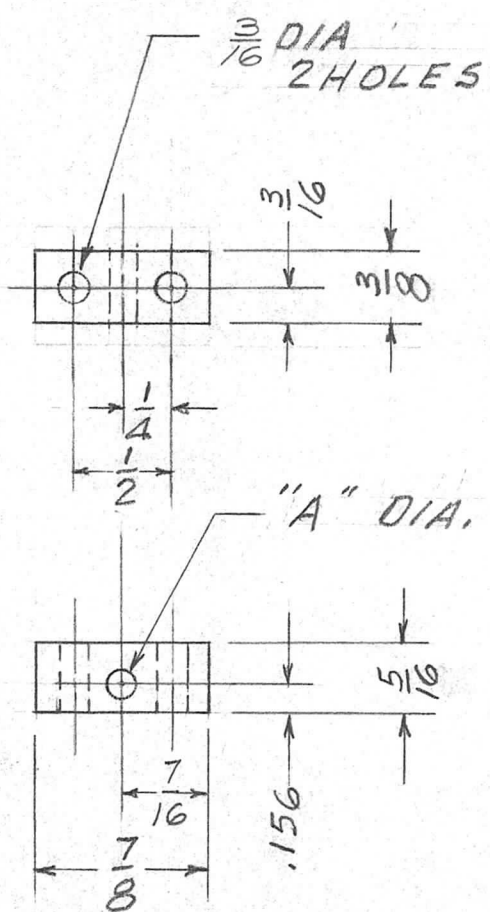


UNLESS OTHERWISE SPECIFIED DIMENSIONS ARE IN INCHES AND INCLUDE CHEMICALLY APPLIED OR PLATED FINISHES		REQ'D	ITEM	PART NUMBER	DESCRIPTION	SYM.
DECIMALS: .X ± .05, .XX ± .01, .XXX ± .005 FRACTIONS: 1/64, ANGLES: 0° -30'		LIST OF MATERIAL				
MATERIAL BRASS HALF HARD		FINAL APPROVAL	DATE	THE TECHNICAL MATERIEL CORP.		
FINISH		MECH. DES.	DATE	MAMARONECK, NEW YORK		
		ELECT. DES.	DATE	COIL LUG		
		CHECKED	DATE			
		DRAWN	DATE			
NOTICE TO PERSONS RECEIVING THIS DRAWING THE TECHNICAL MATERIEL CORPORATION claims proprietary right in the material disclosed hereon. This drawing is issued in confidence for engineering information only and may not be reproduced or used to manufacture anything shown hereon without permission from THE TECHNICAL MATERIEL CORPORATION to the user. This drawing is loaned for mutual assistance and is subject to recall at any time.				SIZE	CODE IDENT. NO.	DWG NO.
				A	82679	PM 1381
				SCALE	SHEET	OF

APPLICATION

REVISIONS

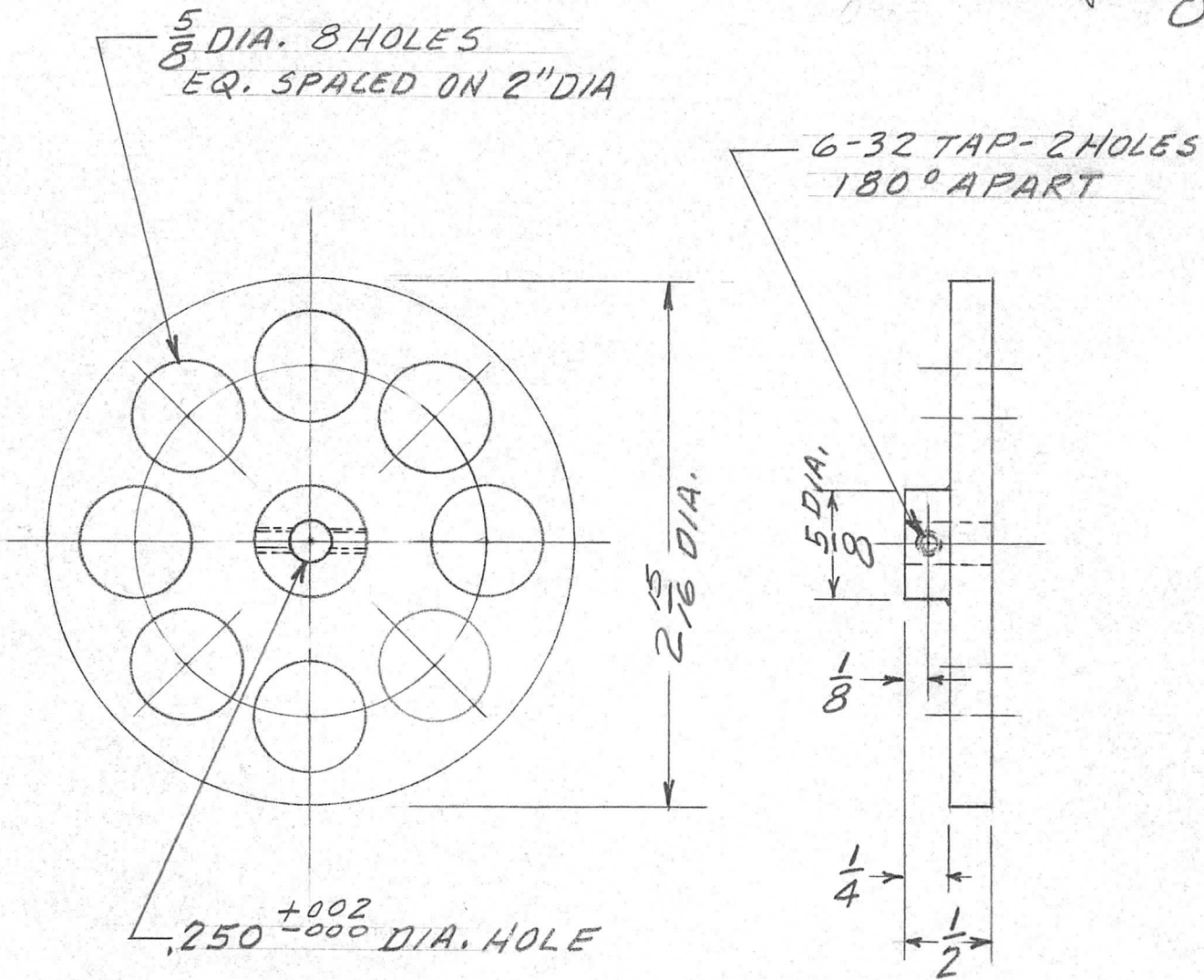
QTY	MODEL USED ON	ASS'Y NO.	LTR	DESCRIPTION	DATE	E.M.N.NO	DRAFT	CHKD	APPD
	HFRR-4		Ø	ORIG. RELEASE FOR PROD.	2-26-69		RG		
			A	DIM. CHG 3/16 WAS 5/32	4-3-69	19376	GE		
TMC P/N		DIM-A							
PM1383-1	.157 ±.001								
PM1383-2	.188 ±.001								



2 REQ PER UNIT
 1 WITH .157 HOLE
 1 WITH .188 HOLE

UNLESS OTHERWISE SPECIFIED DIMENSIONS ARE IN INCHES AND INCLUDE CHEMICALLY APPLIED OR PLATED FINISHES		REQ'D	ITEM	PART NUMBER	DESCRIPTION	SYM.	
DECIMALS: .X ± .05, .XX ± .01, .XXX ± .005; FRACTIONS: 1/64, ANGLES: 0°-30'		LIST OF MATERIAL SK 3252-X8 THE TECHNICAL MATERIEL CORP. MAMARONECK, NEW YORK BEARING BLOCK					
MATERIAL	5/16 x 3/8 BRASS	FINAL APPROVAL	POSE	DATE	2/26/69		
FINISH		MECH. DES.		DATE	2/26/69		
		ELECT. DES.		DATE			
		CHECKED		DATE	2/26/69		
		DRAWN	D.A.C.	DATE	2/26/69		
NOTICE TO PERSONS RECEIVING THIS DRAWING: THE TECHNICAL MATERIEL CORPORATION claims proprietary right in the material disclosed hereon. This drawing is issued in confidence for engineering information only and may not be reproduced or used to manufacture anything shown hereon without permission from THE TECHNICAL MATERIEL CORPORATION to the user. This drawing is loaned for mutual assistance and is subject to recall at any time.		SIZE	A	CODE IDENT. NO.	82679	DWG NO.	PM1383
		SCALE		SHEET		OF	A

QTY	MODEL USED ON	ASS'Y NO.	LTR	DESCRIPTION	DATE	E.M.N.NO	DRAFT	CHKD	APPD
1	HFRR-4		Ø	ORIG. RELEASE FOR PROD.	2-26-69		RG		
			A	DIM CHG. 2 5/16 WAS 3" DIA	4.3.69	19376	GE		



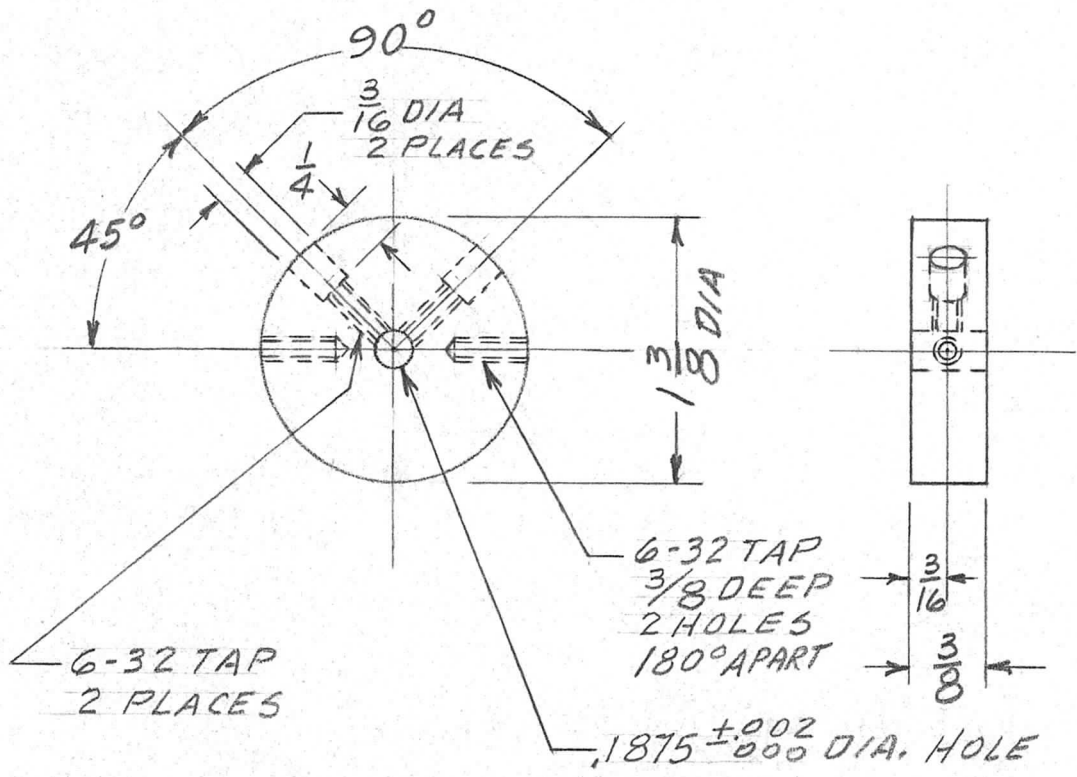
UNLESS OTHERWISE SPECIFIED DIMENSIONS ARE IN INCHES AND INCLUDE CHEMICALLY APPLIED OR PLATED FINISHES		REQ'D	ITEM	PART NUMBER	DESCRIPTION	SYM.
DECIMALS .X ± .05 .XX ± .01 .XXX ± .005		LIST OF MATERIAL SK 3252-X3 THE TECHNICAL MATERIEL CORP. MAMARONECK, NEW YORK BRAKE WHEEL				
FRACTIONS 1/64 ANGLES 0° 30'		FINAL APPROVAL [Signature]		DATE		
MATERIAL 3" DIA. ALUM 2024 T-3		MECH. DES.		DATE		
FINISH S 404 YEL. IRIDITE		ELECT. DES.		DATE		
		CHECKED		DATE		
		DRAWN		DATE		

NOTICE TO PERSONS RECEIVING THIS DRAWING THE TECHNICAL MATERIEL CORPORATION claims proprietary right in the material disclosed hereon. This drawing is issued in confidence for engineering information only and may not be reproduced or used to manufacture anything shown hereon without permission from THE TECHNICAL MATERIEL CORPORATION to the user. This drawing is loaned for mutual assistance and is subject to recall at any time.				SIZE	CODE IDENT. NO.	DWG NO.	ISSUE
				A	82679	PM1384	A
SCALE					SHEET		OF

APPLICATION

REVISIONS

QTY	MODEL USED ON	ASS'Y NO.	LTR	DESCRIPTION	DATE	E.M.N.NO	DRAFT	CHKD	APPD
1	HFRR-4		Ø	ORIG. RELEASE FOR PROD.	2-26-69		RG		<i>[Signature]</i>



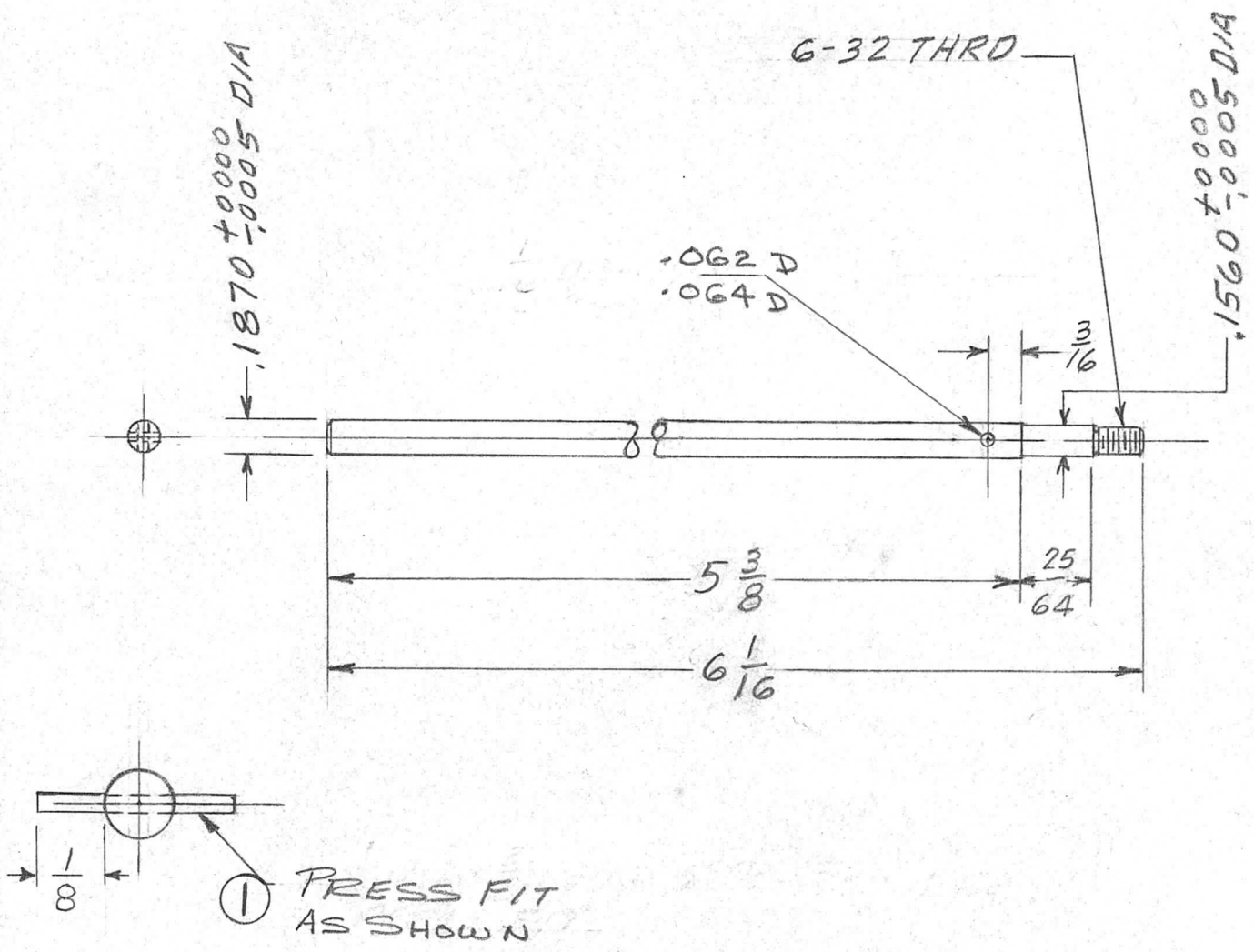
UNLESS OTHERWISE SPECIFIED DIMENSIONS ARE IN INCHES AND INCLUDE CHEMICALLY APPLIED OR PLATED FINISHES		REQ'D	ITEM	PART NUMBER	DESCRIPTION	SYM.
DECIMALS: .X ± .05, .XX ± .01, .XXX ± .005 FRACTIONS: 1/64, ANGLES: 0°-30'		LIST OF MATERIAL SK 3252-X4 THE TECHNICAL MATERIEL CORP. MAMARONECK, NEW YORK COUPLING				
MATERIAL	1 3/8 DIA. BRASS	FINAL APPROVAL	<i>[Signature]</i>	DATE		
FINISH		MECH. DES.	<i>[Signature]</i>	DATE		
		ELECT. DES.		DATE		
		CHECKED	<i>[Signature]</i>	DATE		
		DRAWN	D.A.C.	DATE		

NOTICE TO PERSONS RECEIVING THIS DRAWING THE TECHNICAL MATERIEL CORPORATION claims proprietary right in the material disclosed hereon. This drawing is issued in confidence for engineering information only and may not be reproduced or used to manufacture anything shown hereon without permission from THE TECHNICAL MATERIEL CORPORATION to the user. This drawing is loaned for mutual assistance and is subject to recall at any time.				SIZE	CODE IDENT. NO.	DWG NO.	ISSUE
				A	82679	PM 1385	Ø
				SCALE		SHEET	OF

APPLICATION

REVISIONS

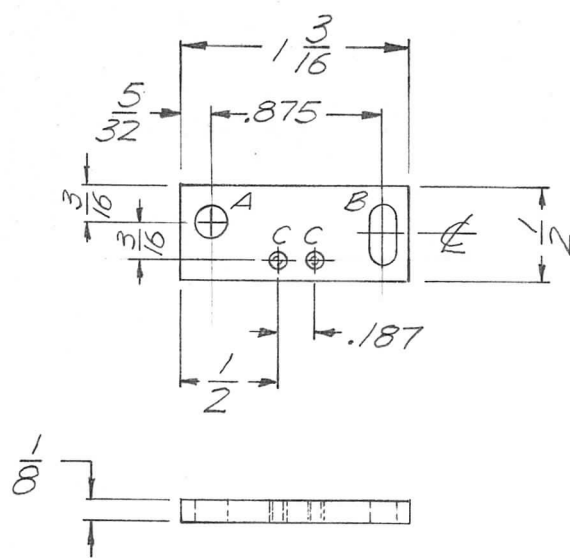
QTY	MODEL USED ON	ASS'Y NO.	LTR	DESCRIPTION	DATE	E.M.N.NO	DRAFT	CHKD	APPD
1	HFRR-4	A0128	Ø	ORIG. RELEASE FOR PROD.	2-27-69		RG		
			A	ITEM (1) WAS PN59-062-6	8-21-69	19554	GE	MJ	CP



UNLESS OTHERWISE SPECIFIED DIMENSIONS ARE IN INCHES AND INCLUDE CHEMICALLY APPLIED OR PLATED FINISHES	1	1	PN59-062-7	SPRING PIN	REQ'D	ITEM	PART NUMBER	DESCRIPTION	SYM.
DECIMALS .X ± .05 .XX ± .01 .XXX ± .005	POSE		LIST OF MATERIAL SK3252-X7			THE TECHNICAL MATERIEL CORP. MAMARONECK, NEW YORK			
FRACTIONS 1/64 ANGLES 0° - 30'	FINAL APPROVAL <i>[Signature]</i>		DATE 2-26-69	SHAFT, LOCK TUNER					
MATERIAL STAINLESS STEEL-TYPE 303	MECH. DES.		DATE						
FINISH 5104 PASSIVATE	ELECT. DES.		DATE						
	CHECKED <i>[Signature]</i>		DATE 2/26/69						
	DRAWN <i>[Signature]</i>		DATE 2/26/69						

NOTICE TO PERSONS RECEIVING THIS DRAWING THE TECHNICAL MATERIEL CORPORATION claims proprietary right in the material disclosed hereon. This drawing is issued in confidence for engineering information only and may not be reproduced or used to manufacture anything shown hereon without permission from THE TECHNICAL MATERIEL CORPORATION to the user. This drawing is loaned for mutual assistance and is subject to recall at any time.	SIZE A	CODE IDENT. NO. 82679	DWG NO. PM1386	ISSUE A
	SCALE		SHEET	OF

APPLICATION			REVISIONS						
QTY	MODEL USED ON	ASS'Y NO.	LTR	DESCRIPTION	DATE	E.M.N.NO	DRAFT	CHKD	APPD
4	PALA 10K	AX5114	X	EXP RELEASE	4/29/70		GE		
			Ø	ORIG RELEASE FOR PROD	6/18/70		CV		
			A	ADD S404-FINISH	6/15/72	20732	GE	EJ	Ø



HOLE	DESCRIPTION	QTY.
A	5/32 DIA.	1
B	1/8 X 5/16 SLT.	1
C	DRILL & TAP FOR 2-56 THD.	2

UNLESS OTHERWISE SPECIFIED DIMENSIONS ARE IN INCHES AND INCLUDE CHEMICALLY APPLIED OR PLATED FINISHES

DECIMALS: .X ± .05, .XX ± .01, .XXX ± .005
 FRACTIONS: 1/64
 TOLS. ANGLES: 0° -30'

REQ'D	ITEM	PART NUMBER	DESCRIPTION	SYM.
F. BUDETTI LIST OF MATERIAL				
FINAL APPROVAL		DATE	THE TECHNICAL MATERIEL CORP. MAMARONECK, NEW YORK <i>MTG. PLATE, SWITCH</i>	
MECH. DES.		DATE		
ELECT. DES.		DATE		
CHECKED		DATE		
DRAWN		DATE		

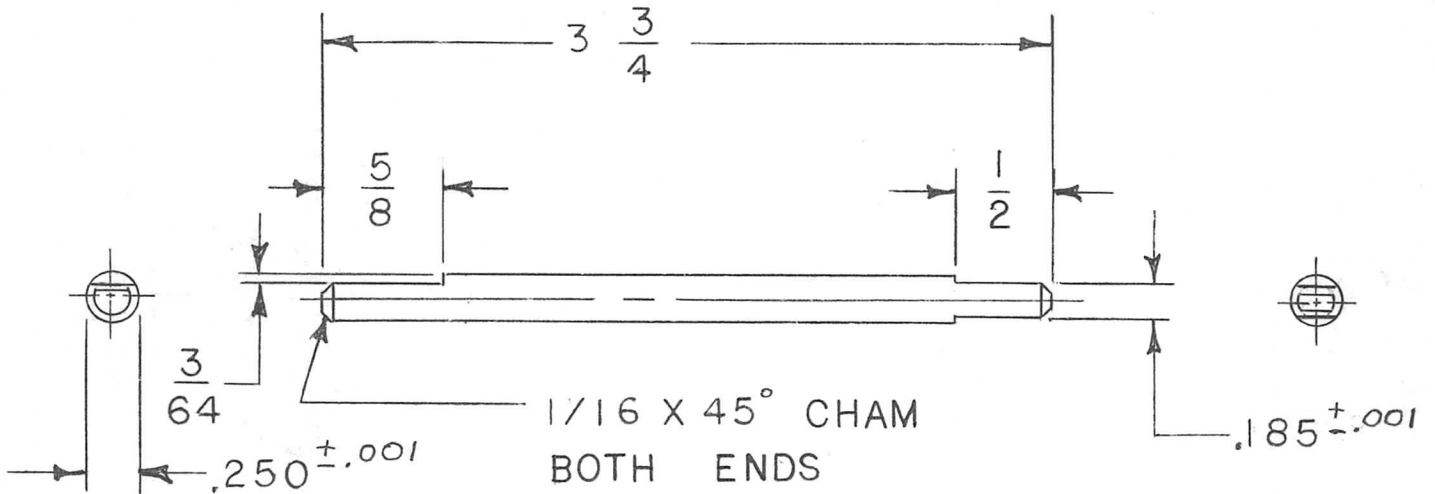
MATERIAL 1/8 ALUM

FINISH S404 YEL. IRIDITE

NOTICE TO PERSONS RECEIVING THIS DRAWING
 THE TECHNICAL MATERIEL CORPORATION claims proprietary right in the material disclosed hereon. This drawing is issued in confidence for engineering information only and may not be reproduced or used to manufacture anything shown hereon without permission from THE TECHNICAL MATERIEL CORPORATION to the user. This drawing is loaned for mutual assistance and is subject to recall at any time.

SIZE	CODE IDENT. NO.	DWG NO.	ISSUE
A	82679	PM 1389	A
SCALE	SHEET		OF
1:1			

APPLICATION			REVISIONS						
QTY	MODEL USED ON	ASS'Y NO.	LTR	DESCRIPTION	DATE	E.M.N.NO	DRAFT	CHKD	APPD
1	TLAM IK	ASI47	X	EXP RELEASE	2-2-71		RF		
			Ø	ORIGINAL RELEASE	2/3/71		W		REB



UNLESS OTHERWISE SPECIFIED DIMENSIONS ARE IN INCHES AND INCLUDE CHEMICALLY APPLIED OR PLATED FINISHES	REQ'D	ITEM	PART NUMBER	DESCRIPTION	SYM.
				LIST OF MATERIAL	
DECIMALS .X ± .05 .XX ± .01 .XXX ± .005	FRACTIONS 1/64 ANGLES 0° - 30'	THE TECHNICAL MATERIEL CORP. MAMARONECK, NEW YORK			
MATERIAL #303 STAINLESS STL	FINAL APPROVAL <i>[Signature]</i>	DATE 2-2-71	SHAFT, BANDSWITCH		
FINISH PASSIVATE-SIO 4	MECH. DES. <i>[Signature]</i>	DATE 2-2-71			
	ELECT. DES.	DATE			
	CHECKED	DATE			
	DRAWN <i>R. Kolarow</i>	DATE 2-2-71	SIZE A	CODE IDENT. NO. 82679	DWG NO. PM 1390
NOTICE TO PERSONS RECEIVING THIS DRAWING THE TECHNICAL MATERIEL CORPORATION claims proprietary right in the material disclosed hereon. This drawing is issued in confidence for engineering information only and may not be reproduced or used to manufacture anything shown hereon without permission from THE TECHNICAL MATERIEL CORPORATION to the user. This drawing is loaned for mutual assistance and is subject to recall at any time.			ISSUE Ø	SHEET OF	