

4

3

2

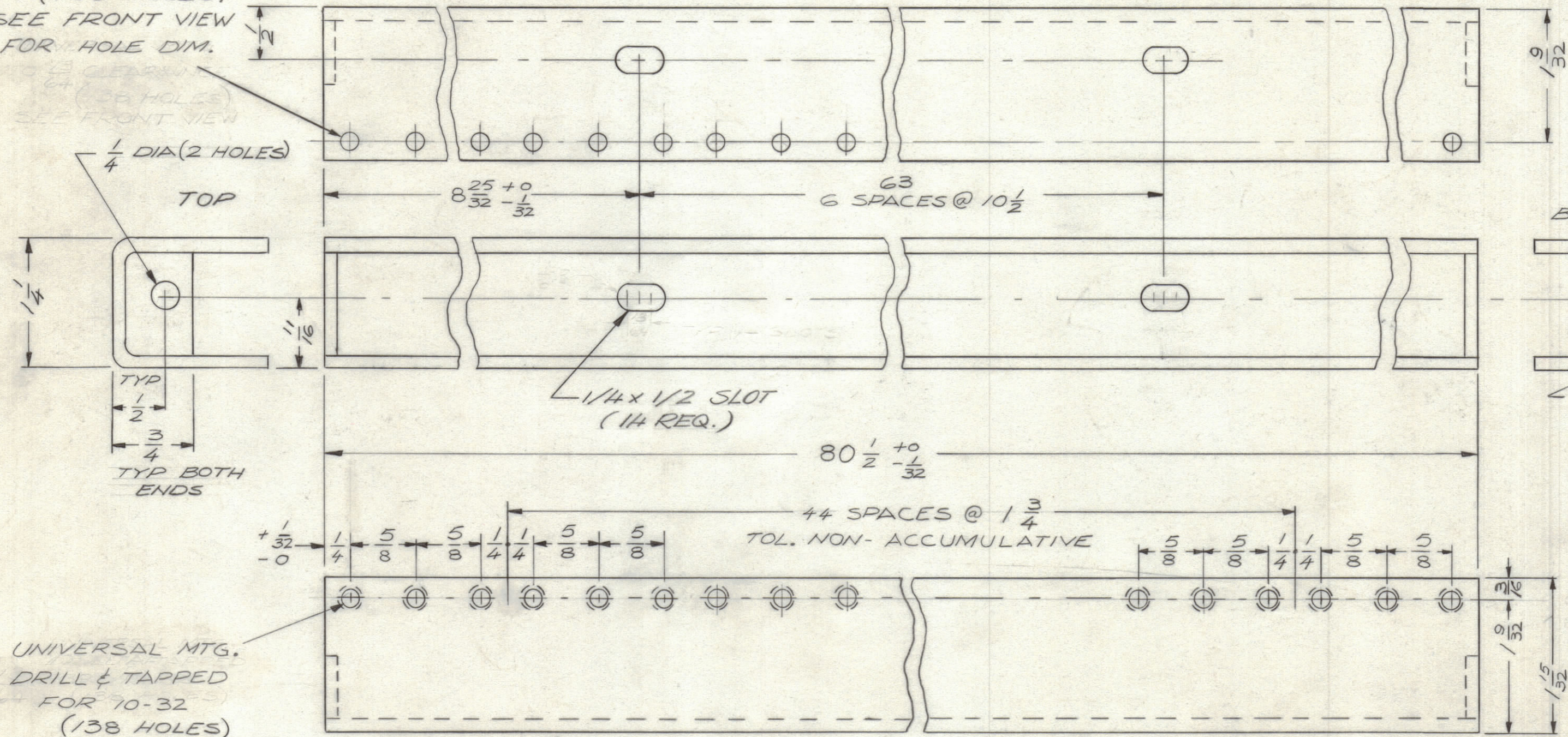
1

TMC P/N	DESCRIPTION
PM 1388-1	AS SHOWN
PM 1388-2	OPPOSITE HAND

REVISIONS						
ZONE	LTR	DESCRIPTION	DATE	E.M.N.NO	DRAFT	CHKD APPD
	X	EXP RELEASE	4/5/69		GE	
	Ø	ORIGINAL RELEASE FOR PRODUCTION	5/29/69		W	
	A	DIR. OF SLOTS WAS 1/4 X 29/64	6/23/70	19893	EL	WJL or JLB

UNIVERSAL MTG.
 $\frac{13}{64}$ DIA. CLEARANCE
 (138 HOLES)
 SEE FRONT VIEW
 FOR HOLE DIM.

REAR



UNIVERSAL MTG.
 DRILL & TAPPED
 FOR 10-32
 (138 HOLES)

FRONT

WELD BOTH ENDS
 GRIND FLUSH

QTY / UNIT	MODEL USED ON	ASS'Y NO.
2	RAK 127-1	
2	RAK 127-1	

APPLICATION

CODE

NOTICE TO PERSONS RECEIVING THIS DRAWING
 THE TECHNICAL MATERIEL CORPORATION claims proprietary right in the material disclosed hereon. This drawing is issued in confidence for engineering information only and may not be reproduced or used to manufacture anything shown hereon without permission from THE TECHNICAL MATERIEL CORPORATION to the user. This drawing is loaned for mutual assistance and is subject to recall at any time.

UNLESS OTHERWISE SPECIFIED
 DIMENSIONS ARE IN INCHES
 AND INCLUDE CHEMICALLY APPLIED
 OR PLATED FINISHES

TOLERANCES ON	
DECIMALS	FRACTIONS
.X ± .05	± 1/64
.XX ± .01	ANGLES
.XXX ± .005	± 0° -30'

MATERIAL STEEL 11 GA.
 COLD ROLLED
 FINISH S105 BRIGHT
 CAD PLATE

QTY. REQ.	ITEM	PART NO.	DESCRIPTION	SYMBOL
	O.P.OSE LIST OF MATERIAL			
FINAL APPROVAL		DATE	THE TECHNICAL MATERIEL CORP.	
MECH. DES.		DATE	MAMARONECK, NEW YORK	
ELECT. DES.		DATE	CHANNEL, MTG., RACK	
CHECKED		DATE		
DRAWN		DATE		
SIZE	CODE IDENT.NO.	DWG NO.	ISSUE	
C	82679	PM 1388	A	
SCALE 1:1			SHEET	OF

4

3

2

1