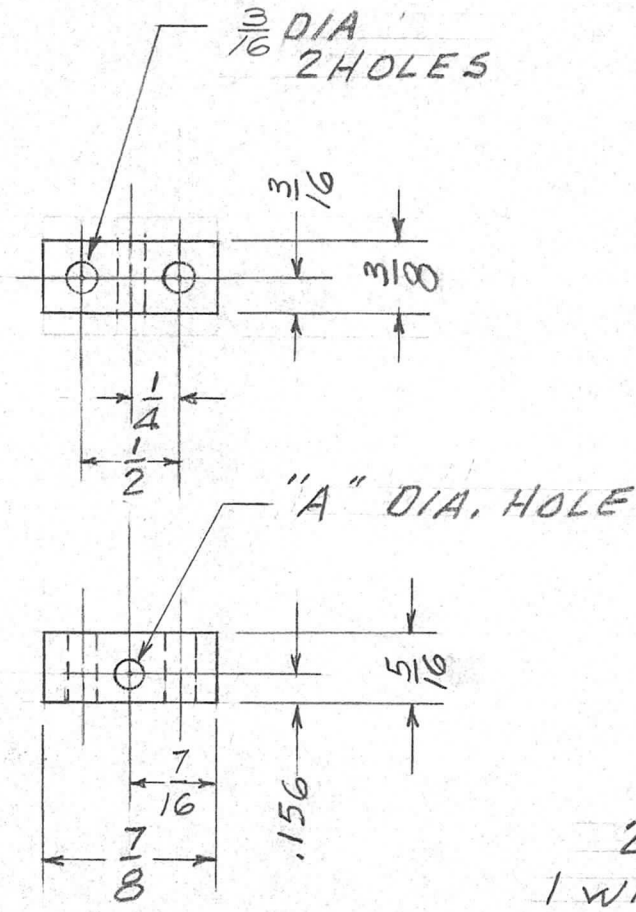


APPLICATION

REVISIONS

QTY	MODEL USED ON	ASS'Y NO.	LTR	DESCRIPTION	DATE	E.M.N.NO	DRAFT	CHKD	APPD
	HFRR-4		Ø	ORIG. RELEASE FOR PROD.	2-26-69		RG		
			A	DIM. CHG 3/16 WAS 5/32	4-3-69	19376	GE		
TMC P/N		DIM-A							
PM1383-1	.157 ±.001								
PM1383-2	.188 ±.001								



2 REQ PER UNIT
 1 WITH .157 HOLE
 1 WITH .188 HOLE

UNLESS OTHERWISE SPECIFIED DIMENSIONS ARE IN INCHES AND INCLUDE CHEMICALLY APPLIED OR PLATED FINISHES		REQ'D	ITEM	PART NUMBER	DESCRIPTION	SYM.
DECIMALS: X ± .05, .XX ± .01, .XXX ± .005; FRACTIONS: 1/64, ANGLES: 0°-30'		POSE LIST OF MATERIAL SK 3252-X8 THE TECHNICAL MATERIEL CORP. MAMARONECK, NEW YORK BEARING BLOCK				
MATERIAL	5/16 x 3/8 BRASS	FINAL APPROVAL	DATE	DATE: 2/26/69		
FINISH		MECH. DES.	DATE	DATE: 2/26/69		
		ELECT. DES.	DATE	DATE: 2/26/69		
		CHECKED	DATE	DATE: 2/26/69		
		DRAWN	DATE	DATE: 2/26/69		

NOTICE TO PERSONS RECEIVING THIS DRAWING THE TECHNICAL MATERIEL CORPORATION claims proprietary right in the material disclosed hereon. This drawing is issued in confidence for engineering information only and may not be reproduced or used to manufacture anything shown hereon without permission from THE TECHNICAL MATERIEL CORPORATION to the user. This drawing is loaned for mutual assistance and is subject to recall at any time.				SIZE	CODE IDENT. NO.	DWG NO.	ISSUE
				A	82679	PM1383	A
				SCALE	SHEET OF		