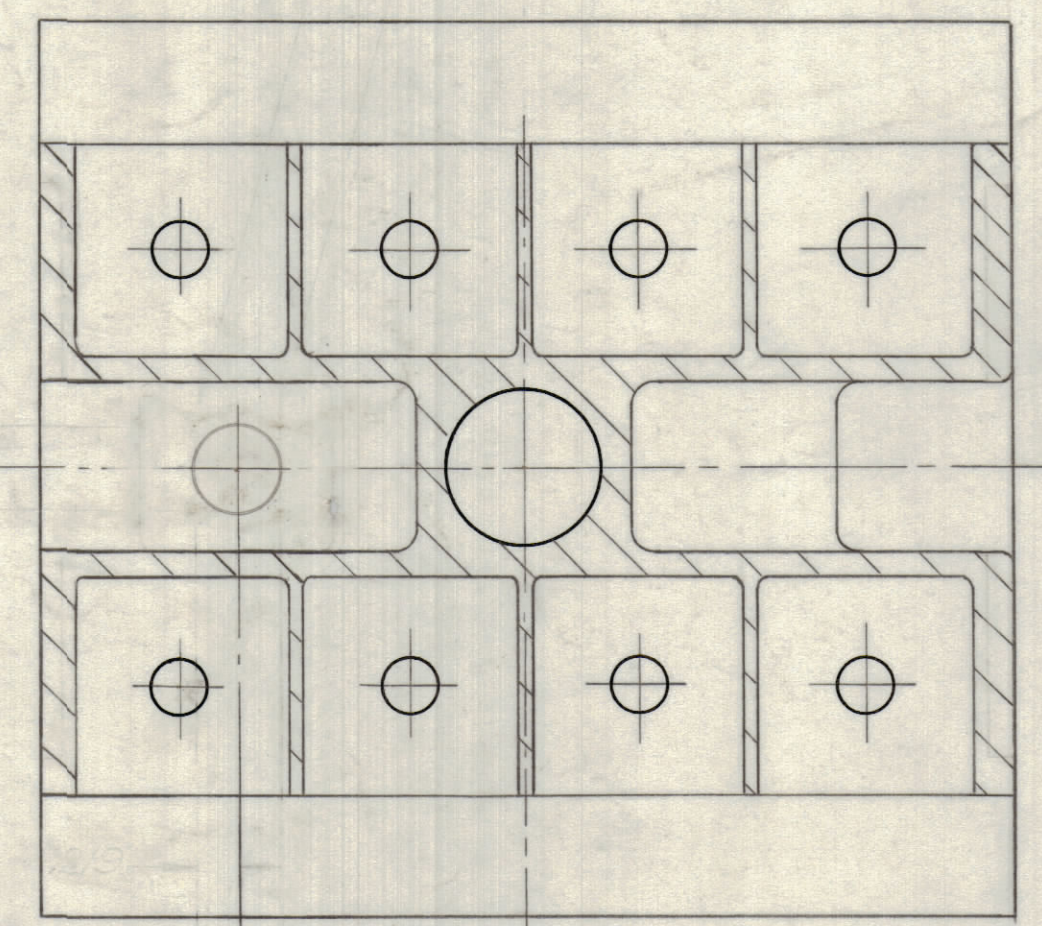
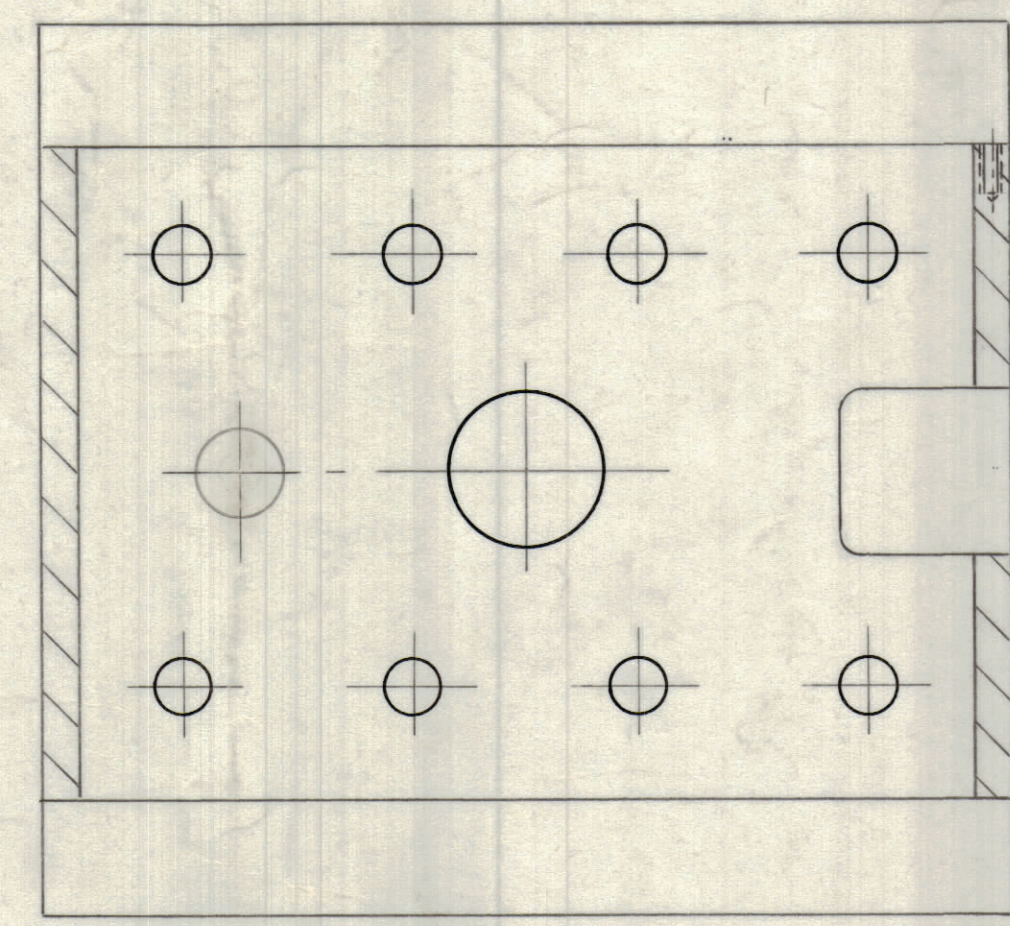


REVISIONS						
ZONE	LTR	DESCRIPTION	DATE	E.M.N.NO	DRAFT	CHKD
X		EXP. RELEASE	10/24/68		L.H.	
Ø		ORIGINAL RELEASE FOR PRODUCTION	1/8-68		FG	
A		SEE SHEET 1 OF 2	1/22/68	19229	L.H.	
B		REVISED & UPDATED	3/24/69	19366	GE	
C		SEE SHEET 1 OF 2	5/3/69	19417	GE	
D		SEE SHEET 1 OF 2	7/5/69	19505	GE	
E		SEE SHEET 1 OF 2	4/23/70	19826	KH	
F		SEE SHEET 1 OF 2	4/22/70	19839	KH	
G		SEE SHEET 1 OF 2	11/17/70	20098	RJ	

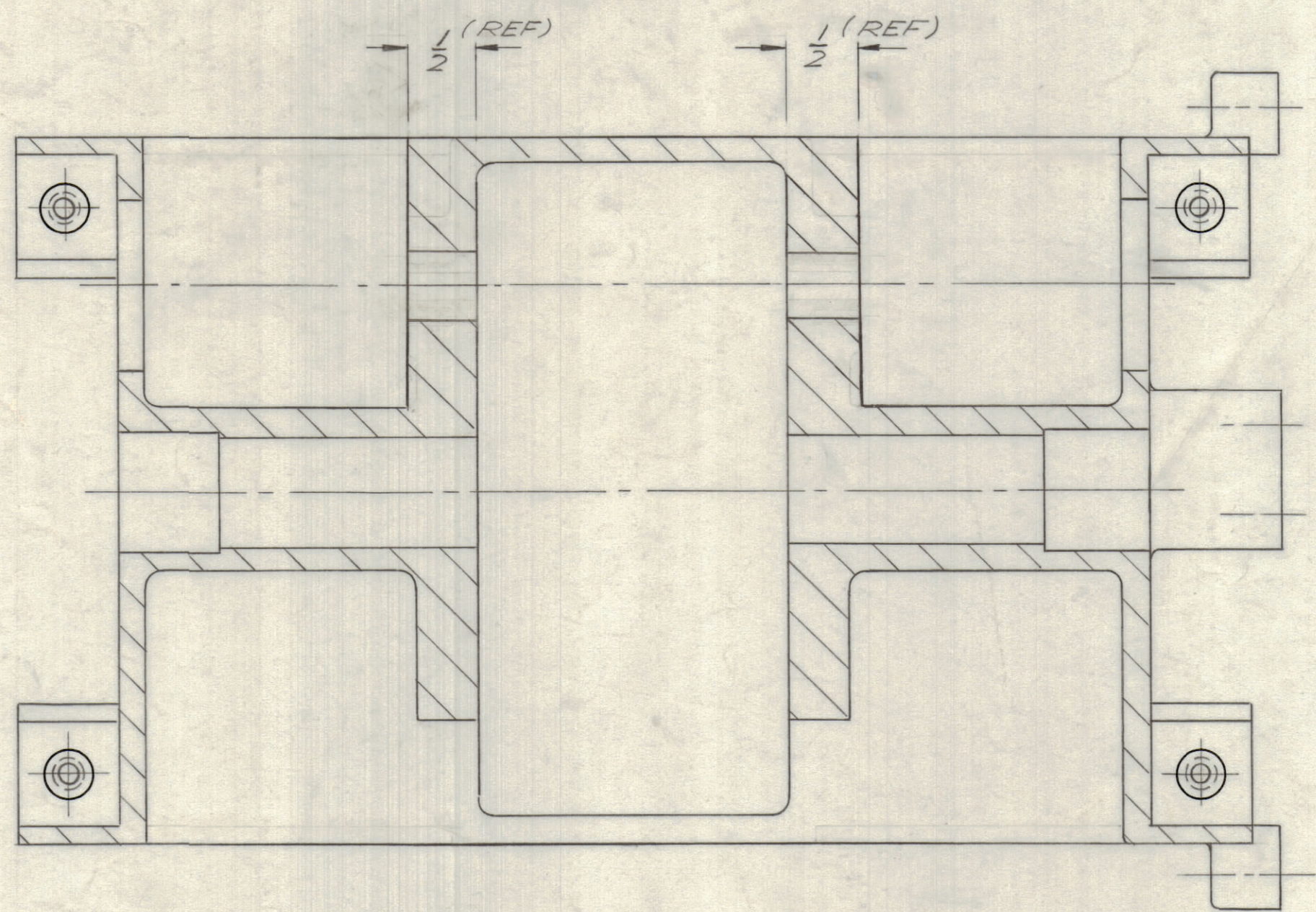
Ø 1.500 DIA LINE DRILL THRU TWO WALLS
 1/4-40 TAP 3/8" DEEP 4 HOLES (2-PL)



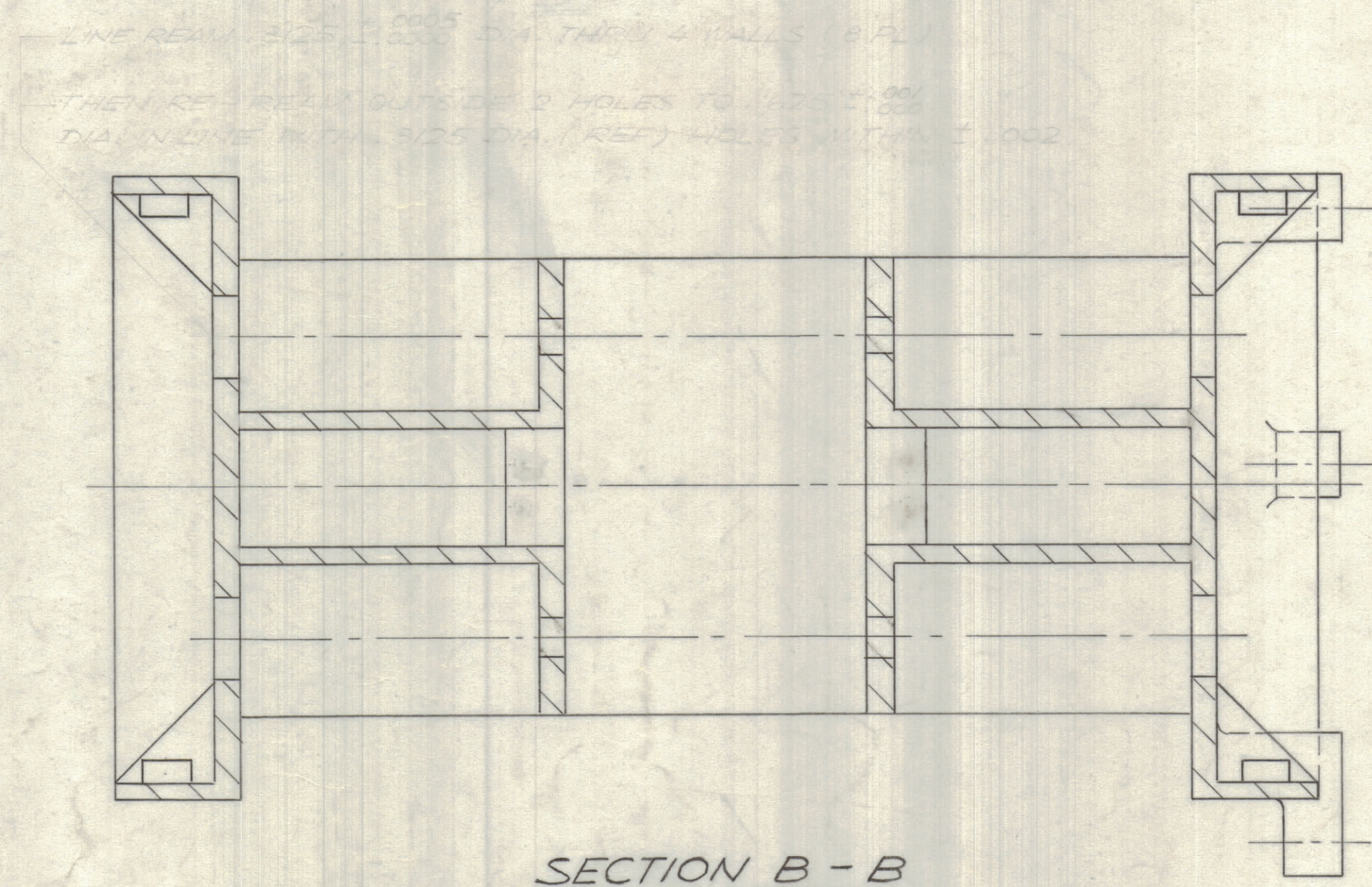
SECTION C-C



SECTION D-D



SECTION A-A



SECTION B-B

LINE REAM SIDES .0005 DIA THRU 4 WALLS (8-PL)
 THEN RE-REAM OUTSIDE 2 HOLES TO .001 ± .001
 DIA IN ONE END .005 DIA (REF) HOLES WITHIN 2.000

REF: CS 135

QTY. REQ.	ITEM	PART NO.	DESCRIPTION	SYMBOL
LIST OF MATERIAL				
THE TECHNICAL MATERIEL CORP. MAMARONECK, NEW YORK				
CHASSIS, RF TUNER				
SIZE	CODE	IDENT. NO.	DWG. NO.	ISSUE
D	82679		PM 1371	G
SCALE 1:1				SHEET 2 OF 2

UNLESS OTHERWISE SPECIFIED DIMENSIONS ARE IN INCHES AND INCLUDE CHEMICALLY APPLIED OR PLATED FINISHES	
TOLERANCES ON	
DECIMALS	FRACTIONS
.X ± .05	± 1/64
.XX ± .01	ANGLES
.XXX ± .005	± 0° -30'

QTY / UNIT	MODEL USED ON	ASS'Y NO.
	HFRR - 4	
APPLICATION		
CODE		
MATERIAL		
FINISH SEE SHEET 1		

NOTICE TO PERSONS RECEIVING THIS DRAWING
 THE TECHNICAL MATERIEL CORPORATION claims proprietary right in the material disclosed hereon. This drawing is issued in confidence for engineering information only and may not be reproduced or used to manufacture anything shown hereon without permission from THE TECHNICAL MATERIEL CORPORATION to the user. This drawing is loaned for mutual assistance and is subject to recall at any time.