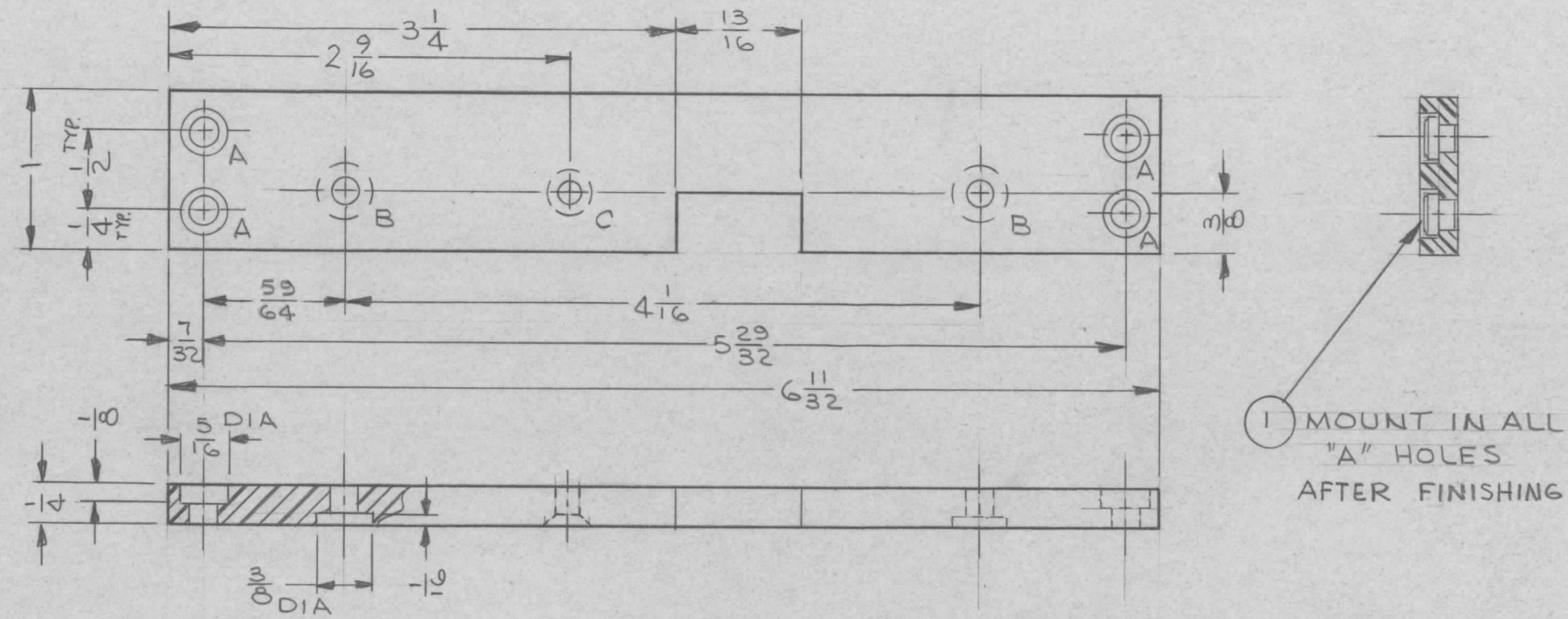


REVISIONS						
ZONE	LTR	DESCRIPTION	DATE	E.M.N.NO	DRAFT	CHKD APPD
	X	EXP. RELEASE	8-31-67	+	JL	<i>[Signature]</i>
	X1	ADDED 1" C" HOLE	9-20-68		<i>[Signature]</i>	<i>[Signature]</i>
	Ø	ORIG. RELEASE FOR PROD	11-7-68	Ø	R.G.	<i>[Signature]</i>



HOLE LEGEND		
HOLE	DESCRIPTION	REQ
A	.191-.194 DIA THRU & C'BORE 5/16 DIA X 1/8 DEEP	4
B	11/64 DIA THRU & C'BORE 3/8 DIA X 1/16 DEEP	2
C	.144 DIA. & C'SINK 82° TO .284 DIA. (#6-32 FHMS)	1

TMC P/N	DESCRIPTION
PM1361-1	AS SHOWN
PM1361-2	OPPOSITE HAND WITHOUT 13/16 X 3/8 DEEP CUTOUT

REQ'D	ITEM	PART NUMBER	DESCRIPTION	SYM.
4	1	NT129-632-6	NUT, PLAIN, SPLINE	A

HOGAN(ZETENA) LIST OF MATERIAL SK3252-003-10

THE TECHNICAL MATERIEL CORP.
MAMARONECK, NEW YORK

MTG, BRACKET-TUNER ASSY

SIZE	CODE IDENT. NO.	DWG NO.	ISSUE
B	82679	PM1361	Ø

SCALE 1:1 SHEET OF

QTY / UNIT	MODEL USED ON	ASS'Y NO.	DECIMALS	FRACTIONS	UNLESS OTHERWISE SPECIFIED DIMENSIONS ARE IN INCHES AND INCLUDE CHEMICALLY APPLIED OR PLATED FINISHES
1	HFRR-4		.X ± .05	1/64	FINAL APPROVAL <i>[Signature]</i> 11/7/68 MECH. DES. M ZEJENA ELECT. DES. DATE CHECKED SG 9/29/68 DRAWN JL 8/31/67
2	HFRR-4		.XX ± .01	TOLS. 1/64	
			.XXX ± .005	ANGLES 0° .30'	
APPLICATION			CODE A		MATERIAL 1/4 THICK X 1" WIDE ALUMINUM 2024-T3 FINISH S404 YELLOW IRIDITE
NOTICE TO PERSONS RECEIVING THIS DRAWING			THE TECHNICAL MATERIEL CORPORATION claims proprietary right in the material disclosed hereon. This drawing is issued in confidence for engineering information only and may not be reproduced or used to manufacture anything shown hereon without permission from THE TECHNICAL MATERIEL CORPORATION to the user. This drawing is loaned for mutual assistance and is subject to recall at any time.		