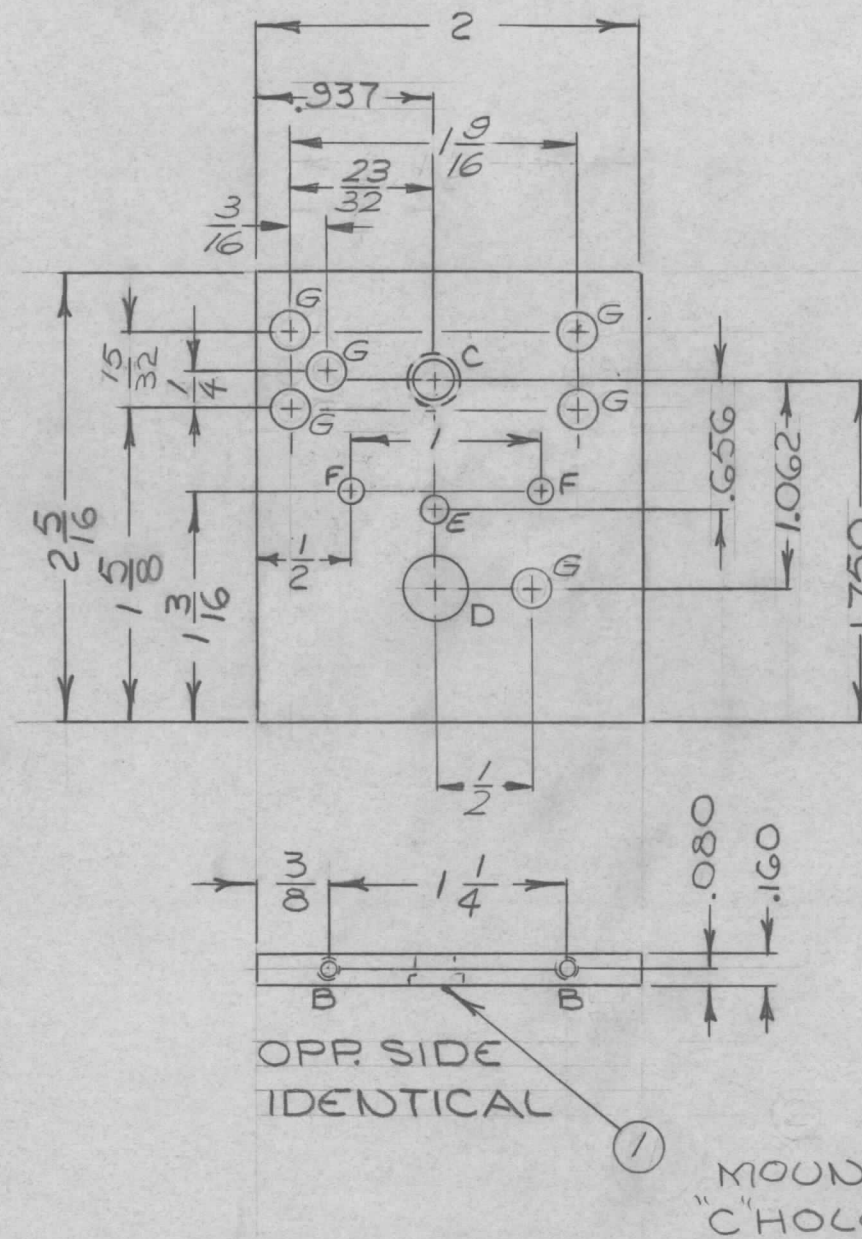


REVISIONS

ZONE	LTR	DESCRIPTION	DATE	E.M.N.NO	DRAFT	CHKD	APPD
	X	EXP. RELEASE	1-23-68				
	Ø	ORIG. RELEASE FOR PROD	11/7/68	Ø	CV		file
	A	REV & UPDATED	2-28-69	19347	GE	H	OP RD
	B	REV. & UPDATED	10/10/69	19607	K	ND	OP RD



HOLES	DESCRIPTION	REQ
B	NO. 50 (.070) DR. 3/16 LG TAP #2-56 NC-2B x 3/16 DP	4
C	DRILL .202 DIA Ø C BORE .2497 ± .0003 x .125 DP	1
D	.3125 ± .0005 DIA	1
E	.1250 ± .0005 DIA	1
F	7/64 DIA	2
G	7/32 DIA	6

1	HERR-4	
QTY / UNIT	MODEL USED ON	ASS'Y NO.
APPLICATION		
	CODE A	S401-451
<p>NOTICE TO PERSONS RECEIVING THIS DRAWING THE TECHNICAL MATERIEL CORPORATION claims proprietary right in the material disclosed hereon. This drawing is issued in confidence for engineering information only and may not be reproduced or used to manufacture anything shown hereon without permission from THE TECHNICAL MATERIEL CORPORATION to the user. This drawing is loaned for mutual assistance and is subject to recall at any time.</p>		

UNLESS OTHERWISE SPECIFIED DIMENSIONS ARE IN INCHES AND INCLUDE CHEMICALLY APPLIED OR PLATED FINISHES	
DECIMALS .X ± .05 .XX ± .01 .XXX ± .005	FRACTIONS 1/64 ANGLES 0° -30'
MATERIAL 160 THK. ALUM. 2024-T3	
FINISH S404 YEL. IRIDITE	

1	1	BB126-13	BRG., BALL, ANNL	C
REQ'D	ITEM	PART NUMBER	DESCRIPTION	SYM.
HOGAN LIST OF MATERIALS K3252-003-26X2				

FINAL APPROVAL M ZEITENA		DATE 11/7/68	THE TECHNICAL MATERIEL CORP. MAMARONECK, NEW YORK	
MECH. DES.	ELECT. DES.	DATE	BRACE, MIDDLE	
CHECKED SG	DRAWN K. K. K.	DATE 1-23-68	SIZE B	CODE IDENT. NO. 82679
			DWG NO. PM1352	ISSUE B
SCALE 1:1			SHEET	OF