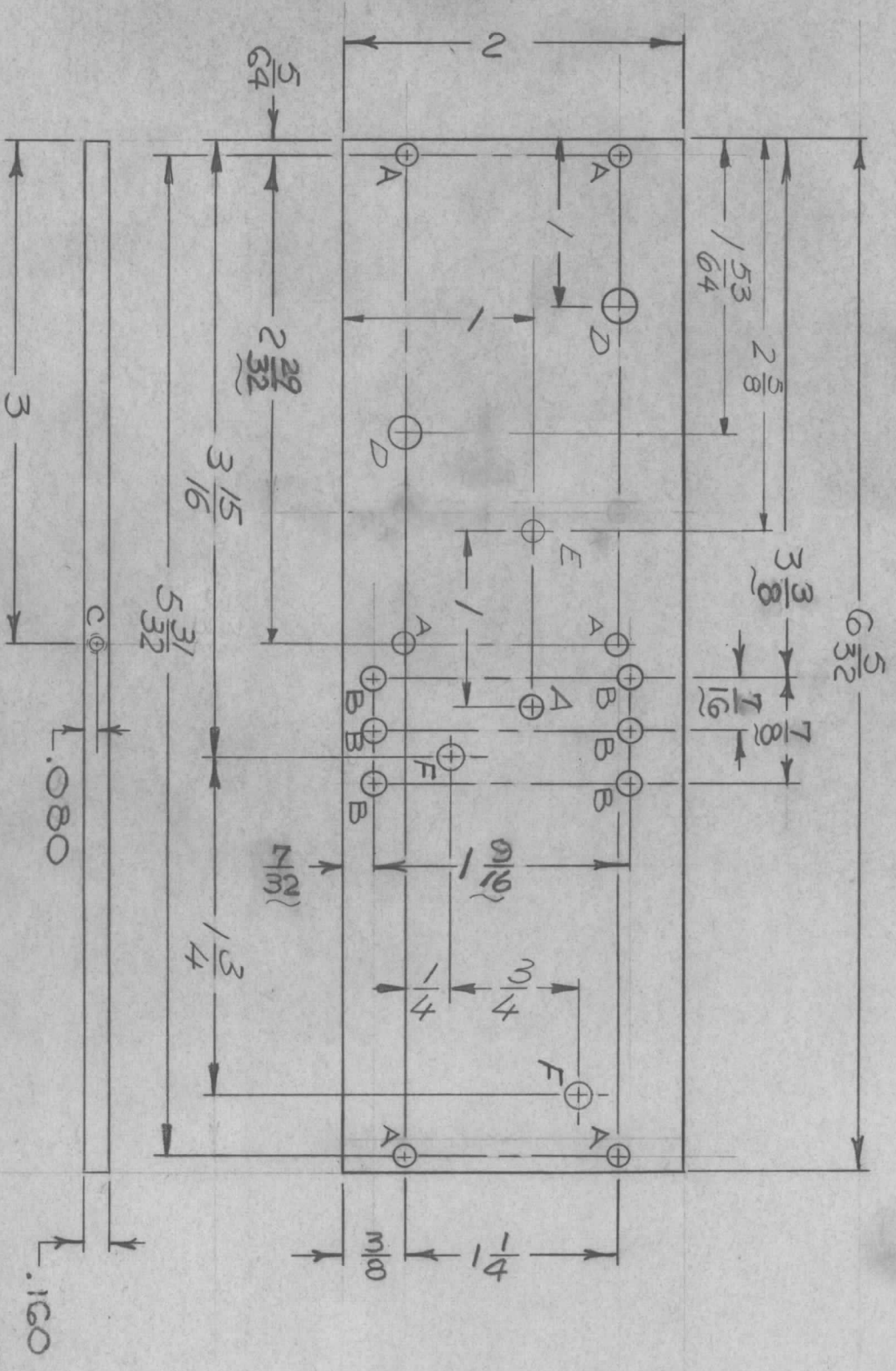


REVISIONS

ZONE	LTR	DESCRIPTION	DATE	E.M.N. NO.	DRAFT	CHKD	APPD
X		EXP. RELEASE	1/8-68				
Ø		ORIG. RELEASE FOR PROD	11/7/68	Ø			
A		REV & UPDATED	2/29/68	19347	GE		
B		"E" HOLE ADDED	5/3/69	19417	GE		
C		RELOCATE ONE "D" HL.	7/5/69	19508	GE		
D		"D" HOLE ADDED	9/4/69	19571	GE		
E		"A" HOLE WAS. 1/8 DIA	11/3/69	19629	GE		
F		"F" HOLES ADD.	3/12/76	19776	CHAS		

HOLE	DESCR	REQ'D
A	7/64 DIA	7
B	7/32 DIA	6
C	NO. 50 (.0700) DR. x 3/8 LG TAP # 2-56 UNC-2B x 1/4 DR. (2 REQ'D)	
D	3/16 DIA.	2
E	5/32 DIA.	1
F	9/64 DIA.	2



OPPOSITE SIDE SAME

QTY / UNIT	1	MODEL USED ON	HERR-4	ASS'Y NO.	40128
APPLICATION		CODE	A	S401-451	

NOTICE TO PERSONS RECEIVING THIS DRAWING  
 THE TECHNICAL MATERIEL CORPORATION claims proprietary right in the material disclosed hereon. This drawing is issued in confidence for engineering information only and may not be reproduced or used to manufacture anything shown hereon without permission from THE TECHNICAL MATERIEL CORPORATION to the user. This drawing is loaned for mutual assistance and is subject to recall at any time.

DECIMALS	FRACTIONS
X ± .05	1/64
.XX ± .01	TOLS.
.XXX ± .005	ANGLES
	0° - 30'

UNLESS OTHERWISE SPECIFIED  
 DIMENSIONS ARE IN INCHES  
 AND INCLUDE CHEMICALLY APPLIED  
 OR PLATED FINISHES

REF: LD2343

REQ'D ITEM	PART NUMBER	DESCRIPTION	SYM.
HOGAN		LIST OF MATERIALSK 3252-003-28X2	

THE TECHNICAL MATERIEL CORP.  
 MAMARONECK, NEW YORK

PLATE, BOTTOM

FINAL APPROVAL	DATE	SIZE	CODE IDENT. NO.	DWG NO.	ISSUE
<i>M. Zelema</i>	11/7/68	B	82679	PM1351	F
CHECKED	DATE	SCALE			
<i>SG</i>	1/31/68	N.T.S.			
DRAWN	DATE				
<i>J. McPherson</i>	1/18-68				