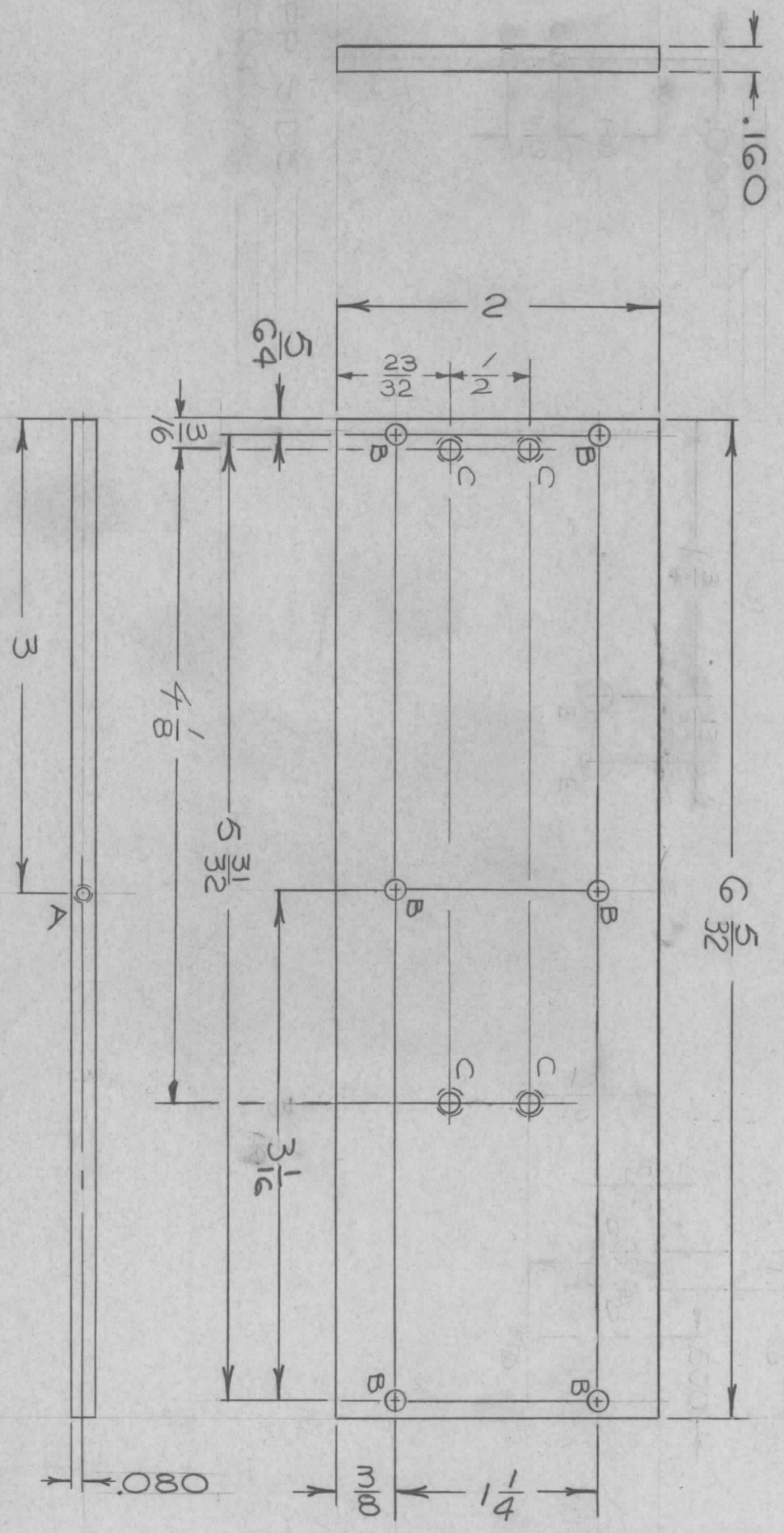


REVISIONS

ZONE	LTR	DESCRIPTION	DATE	E.M.N. NO	DRAFT	CHKD	APPD
X	X	EXP. RELEASE	1/28/68				
X1	X1	ADDED 2D, 1D WAS C	1/31/68				
X2	X2	ADDED 2"E" HOLES	1/20/68				
D	D	ORIG. RELEASE FOR PROD.	1/1/68	Ø			
A	A	REV & UPDATED	3-3-69	19347	GE		
B	B	B" HOLE WAS .116 DIA.	11/3/69	19629	KH		

HOLE	DESCRIPTION	REQ'D
A	1D ² .50(Ø700)DR. x 5/16 DP.	2
B	TAP#2-56UNC-2B x 3/16 DP.	6
C	7/64 DIA.	4



OPP SIDE IDENTICAL

REQ'D ITEM	PART NUMBER	DESCRIPTION	SYM.
HOGAID		LIST OF MATERIAL SK 3252-003-58 X2	
<p align="center">THE TECHNICAL MATERIEL CORP. MAMARONECK, NEW YORK</p>			
FINAL APPROVAL	DATE	PLATE, TOP	
MECH. DES.	DATE	SIZE	CODE IDENT. NO.
M. ZEKINA	11/7/68	B	82679
ELECT. DES.	DATE	DWG. NO.	PM 1350
	DATE	SCALE	1:1
CHECKED	DATE	SHEET	OF
	1/31/68		
DRAWN	DATE	ISSUE	
	1-28-68	B	

QTY / UNIT	MODEL USED ON	ASS'Y NO.
1	HERR-4	
APPLICATION		
CODE	S401-451	

NOTICE TO PERSONS RECEIVING THIS DRAWING
THE TECHNICAL MATERIEL CORPORATION claims proprietary right in the material disclosed hereon. This drawing is issued in confidence for engineering information only and may not be reproduced or used to manufacture anything shown hereon without permission from THE TECHNICAL MATERIEL CORPORATION to the user. This drawing is loaned for mutual assistance and is subject to recall at any time.