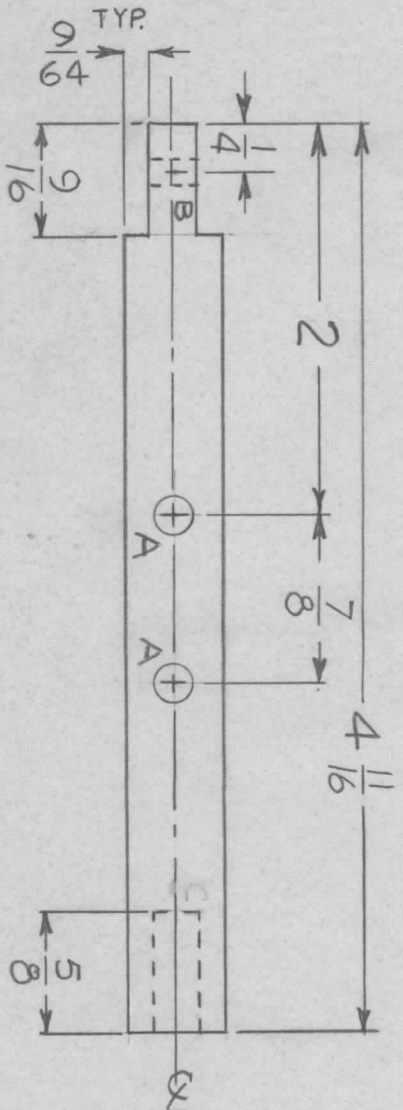
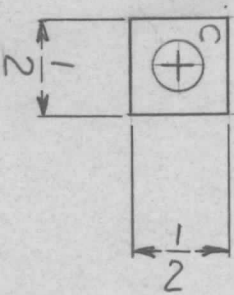


REVISIONS							
ZONE	LTR	DESCRIPTION	DATE	E.M.N. NO	DRAFT	CHKD	APPD
	X	EXP. RELEASE	1/11/68	+	MS	MS	MS
		ORIGINAL RELEASE	8/18/69				

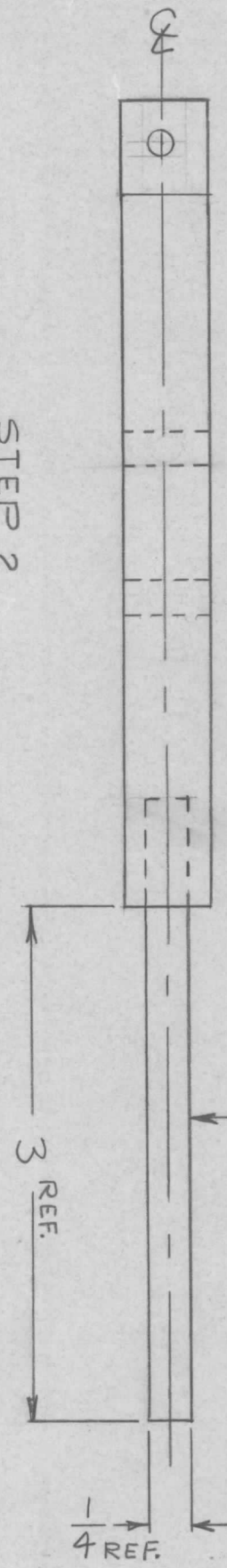


STEP 1

HOLE	DESCRIPTION	REQ
A	3/16 DIA.	2
B	9/64 DIA.	1
C	FORCE FIT IT. 1	1



① FORCE FIT AS SHOWN



STEP 2

REQ'D ITEM	PART NUMBER	DESCRIPTION	SYM.
1	PM691RF 3.625A	SHAFT 1/4 DIA.	

THE TECHNICAL MATERIEL CORP.  
MAMARONECK, NEW YORK

SHAFT, SW, RELAY

QTY / UNIT	1	MODEL USED ON	GPT-40KEL	ASSY NO.	
APPLICATION		CODE	S401-451		

UNLESS OTHERWISE SPECIFIED DIMENSIONS ARE IN INCHES AND INCLUDE CHEMICALLY APPLIED OR PLATED FINISHES	DECIMALS .X ± .05 .XX ± .01 .XXX ± .005	FRACTIONS 1/64 ANGLES 0° .30'	FINISH G-10 EPOXY
---	--	--	----------------------

FINAL APPROVAL	DATE
<i>MS</i>	8/18/69
MECH. DES.	DATE
<i>MS</i>	
ELECT. DES.	DATE
<i>MS</i>	
CHECKED	DATE
<i>MS</i>	
DRAWN	DATE
<i>MS</i>	1-11-68

SIZE	CODE IDENT. NO.	DWG NO.	ISSUE
B	82679	PM 1348	Ø
SCALE	1:1	SHEET	OF

NOTICE TO PERSONS RECEIVING THIS DRAWING  
THE TECHNICAL MATERIEL CORPORATION claims proprietary right in the material disclosed hereon. This drawing is issued in confidence for engineering information only and may not be reproduced or used to manufacture anything shown hereon without permission from THE TECHNICAL MATERIEL CORPORATION to the user. This drawing is loaned for mutual assistance and is subject to recall at any time.