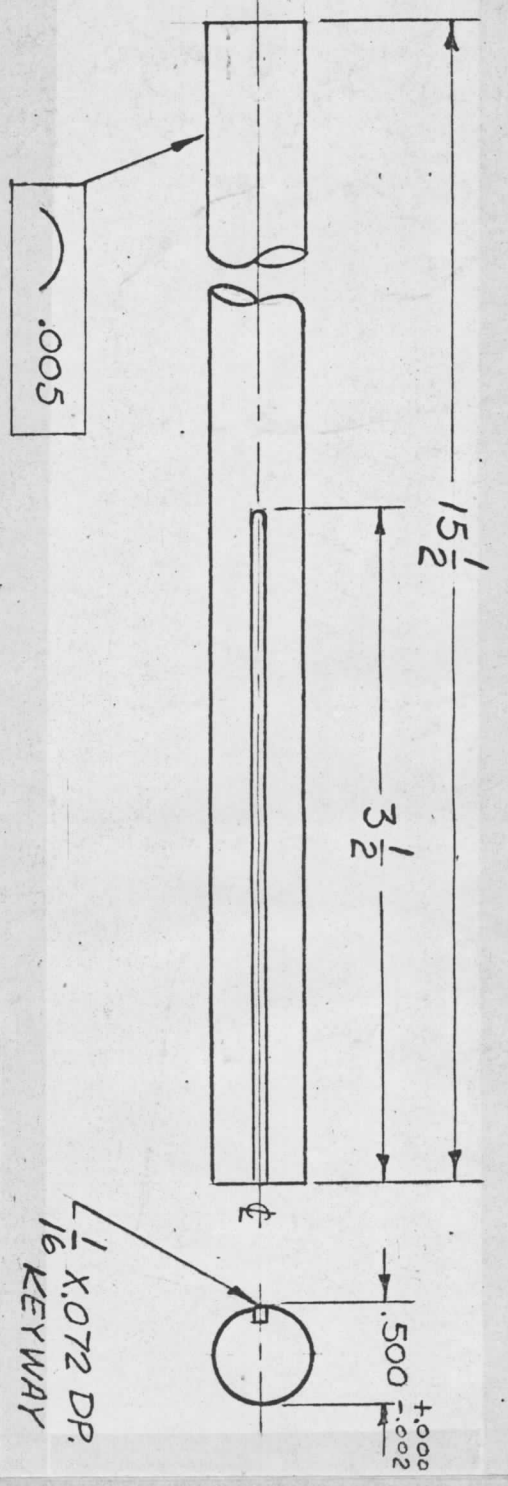
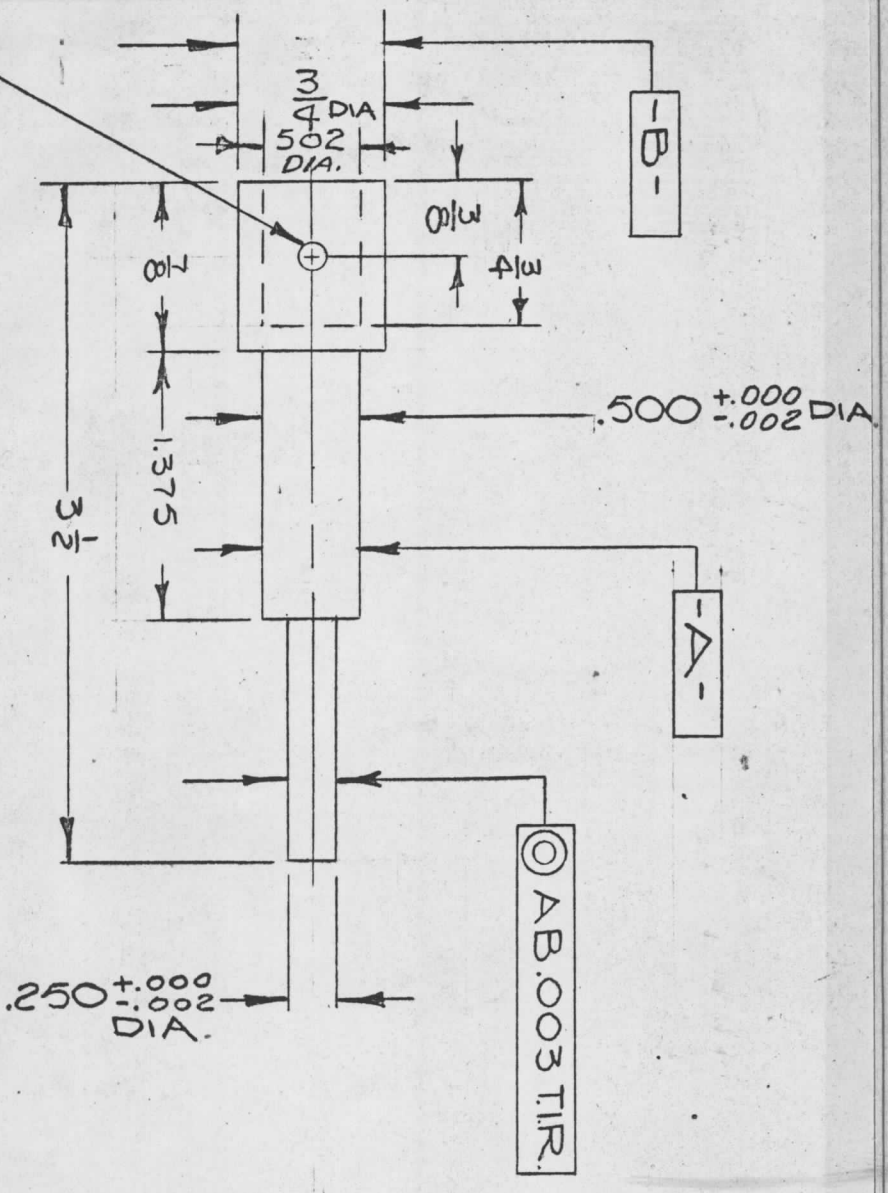


REVISIONS						
ZONE	LTR	DESCRIPTION	DATE	E.M.N.NO	DRAFT	CHKD
A		REVISED BY TR EDDMAN OLD "B" SIZE FOR HKT	10.22.68	19087	W.S.	FAO = B



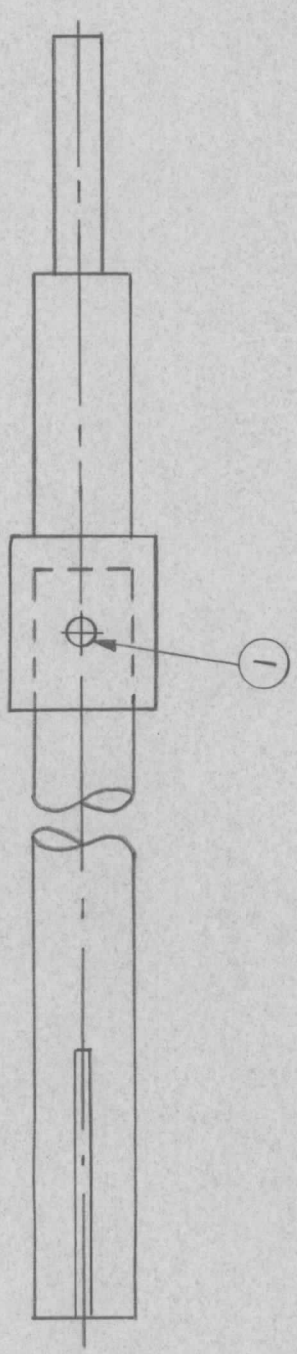
PM1345-1 (SHAFT)  
 MATERIAL: G10 EPOXY .500 DIA.  
 FINISH: NATURAL, S113 FUNGUS PROOF



PM1345-2 (HUB)  
 MATERIAL: STAINLESS # 303  
 FINISH: S104 PASSIVATE

QTY / UNIT	1	BCT-10KA	MODEL USED ON	ASS'Y NO.
APPLICATION				
CODE				

NOTICE TO PERSONS RECEIVING THIS DRAWING  
 THE TECHNICAL MATERIEL CORPORATION claims proprietary right in the material disclosed hereon. This drawing is issued in confidence for engineering information only and may not be reproduced or used to manufacture anything shown hereon without permission from THE TECHNICAL MATERIEL CORPORATION to the user. This drawing is loaned for mutual assistance and is subject to recall at any time.



PM1345-3 (BAND/SWITCH SHAFT ASS'Y)

REQ'D ITEM	PART NUMBER	DESCRIPTION	SYM.
1	PN114-1	PIN, GROOVED, TAPER	

THE TECHNICAL MATERIEL CORP.  
 MAMARONECK, NEW YORK

SHAFT, BANDSWITCH

FINAL APPROVAL	DATE	DATE	DATE
F.S. E.F.M.	4/7/68	4/2/68	4/1/68
MECH. DES.	AP		
ELECT. DES.			
CHECKED	SG	DATE	DATE
DRAWN	JW	DATE	DATE
SIZE	B	CODE IDENT. NO.	DWG NO.
SCALE	1:1	82679	PM1345
SHEET	OF	ISSUE	A