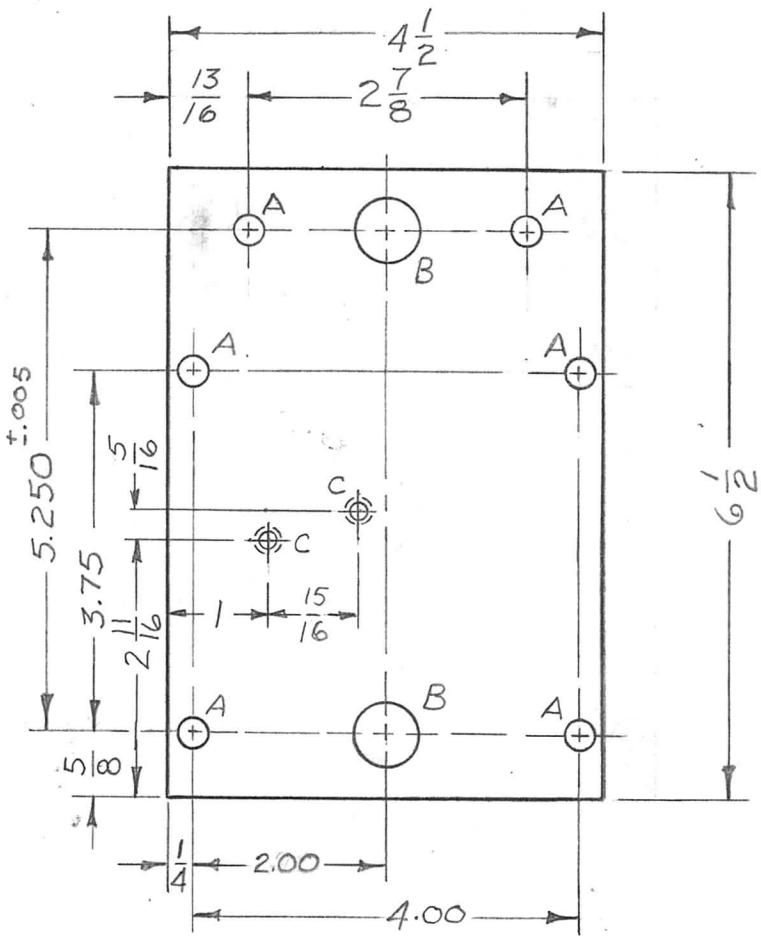


APPLICATION			REVISIONS							
QTY	MODEL USED ON	ASS'Y NO.	LTR	DESCRIPTION	DATE	E.M.N.NO	DRAFT	CHKD	APPD	
1	BCT-10KA		X	EXP. RELEASE	10/17/67		Emp	MP	WZ	
			X1	COMPLETELY REVISED	10/31/67		Emp	MP	WZ	
			X2	ADDED 2C HOLES	5/10/68		HG	MP	WZ	
			Ø	ORIGINAL RELEASE FOR PRODUCTION	5/10/68		HG	MP	WZ	



HOLES	DESCRIPTION	REQ.
A	9/32 DIA.	6
B	.625 ±.0005 ±.0000	2
C	DRILL & TAP 4-40	2

① PRESS FIT IN "B" HOLES

UNLESS OTHERWISE SPECIFIED DIMENSIONS ARE IN INCHES AND INCLUDE CHEMICALLY APPLIED OR PLATED FINISHES	2	1	BB 126-5	BRG, BALL, ANNL	B
DECIMALS .X ± .05 .XX ± .01 .XXX ± .005	REQ'D	ITEM	PART NUMBER	DESCRIPTION	SYM.
FRACTIONS 1/64 ANGLES 0° - 30'	F. BUDETTI LIST OF MATERIAL				
MATERIAL 1/8 THK. ALUM. 2024-T4	FINAL APPROVAL	MECH. DES.	ELECT. DES.	THE TECHNICAL MATERIEL CORP. MAMARONECK, NEW YORK	
FINISHES 409 YELLOW IRIDITE	DATE 5-10-68	DATE 5-10-68	DATE	PLATE, GEAR FRONT	
S 401-451	CHECKED	DATE 4-1-68	DATE		
NOTICE TO PERSONS RECEIVING THIS DRAWING THE TECHNICAL MATERIEL CORPORATION claims proprietary right in the material disclosed hereon. This drawing is issued in confidence for engineering information only and may not be reproduced or used to manufacture anything shown hereon without permission from THE TECHNICAL MATERIEL CORPORATION to the user. This drawing is loaned for mutual assistance and is subject to recall at any time.	DRAWN	DATE 10/17/67	DATE	SIZE A	CODE IDENT. NO. 82679
				DWG NO. PM1341	ISSUE Ø
	SCALE 1:2			SHEET	OF